

FOR LEASE

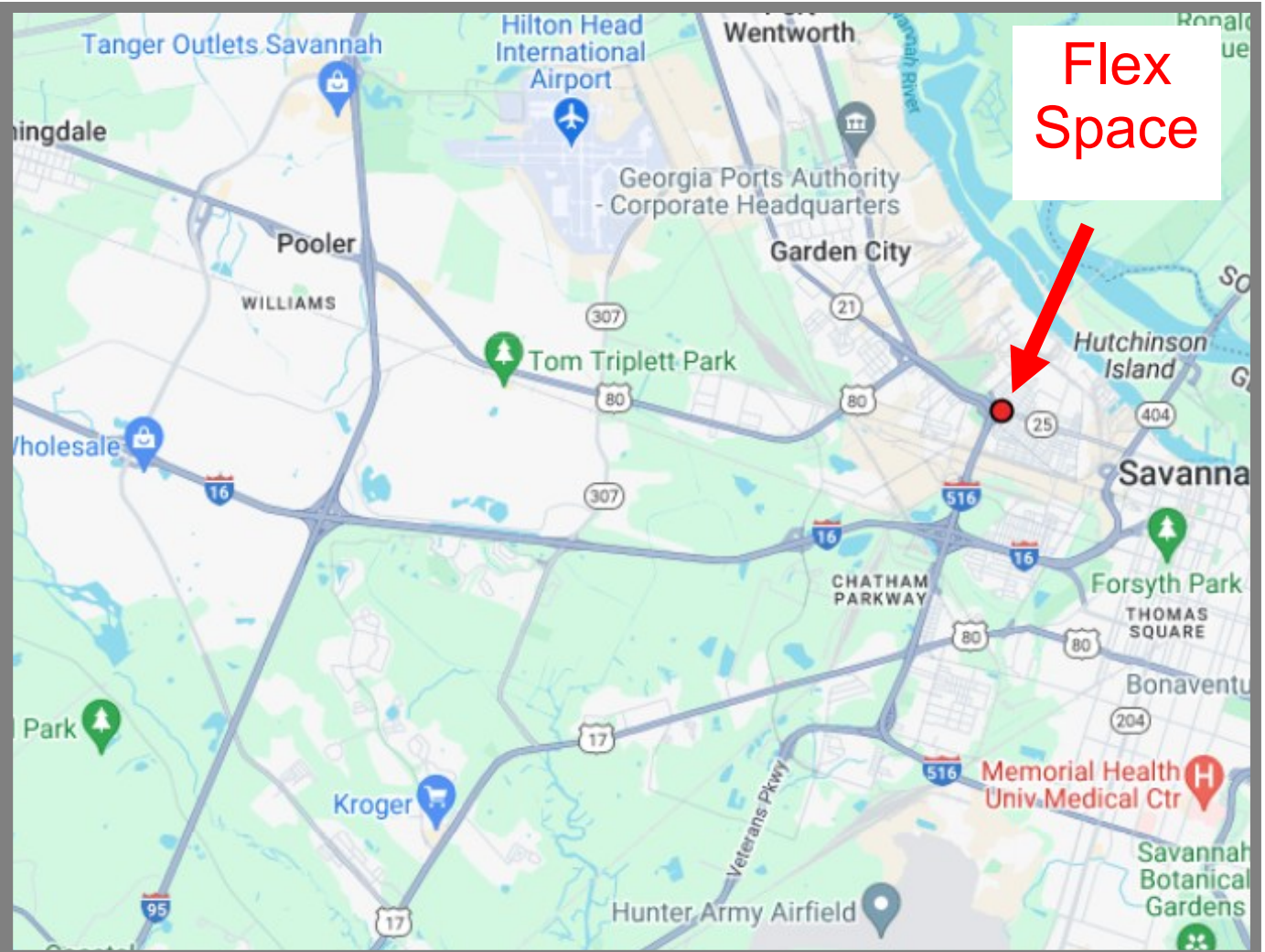
2215 W Bay Street, Savannah, Georgia 31415
3,200 RSF Flex Warehouse Space

Flex Warehouse Space
2215A W Bay
3,200 RSF

Distances:

Downtown Sav 1.0 Mile
Ocean Terminal 1.2 Miles
Airport 8.2 Miles
Interstate 95 10.2 Miles
Interstate 16 1.3 Miles
Hyundai Plant 24.4 Miles

Call: Gary Mankin, **CCIM**,
Re/Max Savannah
(p) +1 912 355 7711
(p) +1 912 650 2720
(m) +1 404 590 3076
gwmankin@gmail.com



This Information is provided for advertising and general information purposes only and is subject to errors, omissions, prior sales/leases and withdrawal without notice. NO REPRESENTATION OR WARRANTY IS GIVEN, EXPRESS OR IMPLIED, AS TO THE ACCURACY OF THE INFORMATION contained herein. You assume without limitation all risk, all liability for loss and damages resulting from reliance on this information. **Tenant/Buyer has the responsibility to verify all information contained herein.**

FOR LEASE

2215B W Bay Street, Savannah, Georgia 31415
Total of 3,200 RSF



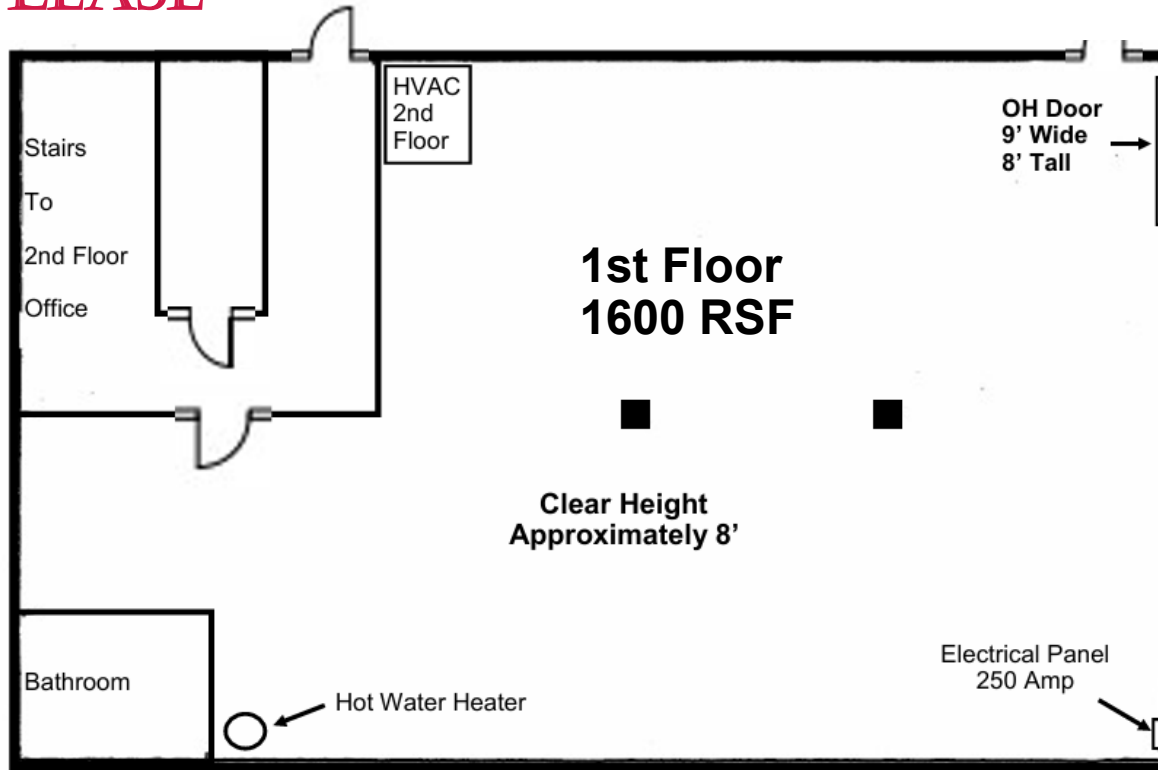
Call: Gary Mankin, **CCIM**, Re/Max Savannah
(p) +1 912 355 7711 (p) +1 912 650 2720 (m) +1 404 590 3076
gwmankin@gmail.com



This Information is provided for advertising and general information purposes only and is subject to errors, omissions, prior sales/leases and withdrawal without notice. NO REPRESENTATION OR WARRANTY IS GIVEN, EXPRESS OR IMPLIED, AS TO THE ACCURACY OF THE INFORMATION contained herein. You assume without limitation all risk, all liability for loss and damages resulting from reliance on this information. **Tenant/Buyer has the responsibility to verify all information contained herein.**

**FOR
LEASE**

2215A W Bay Street, Savannah, Georgia 31415
3,200 RSF (1,600 RSF 1st Level & 1,600 RSF Office 2nd Floor)
\$3,500.00 Monthly, \$13.13 RSF NNN, Includes Some Fenced Yard Space, Zoned B-C



To view a video clip of the Flex Space use this link below:

<https://drive.google.com/file/d/1Qd4WjpvsrqeLwsnCDVUbdViYNYEcB9jS/view?usp=sharing>

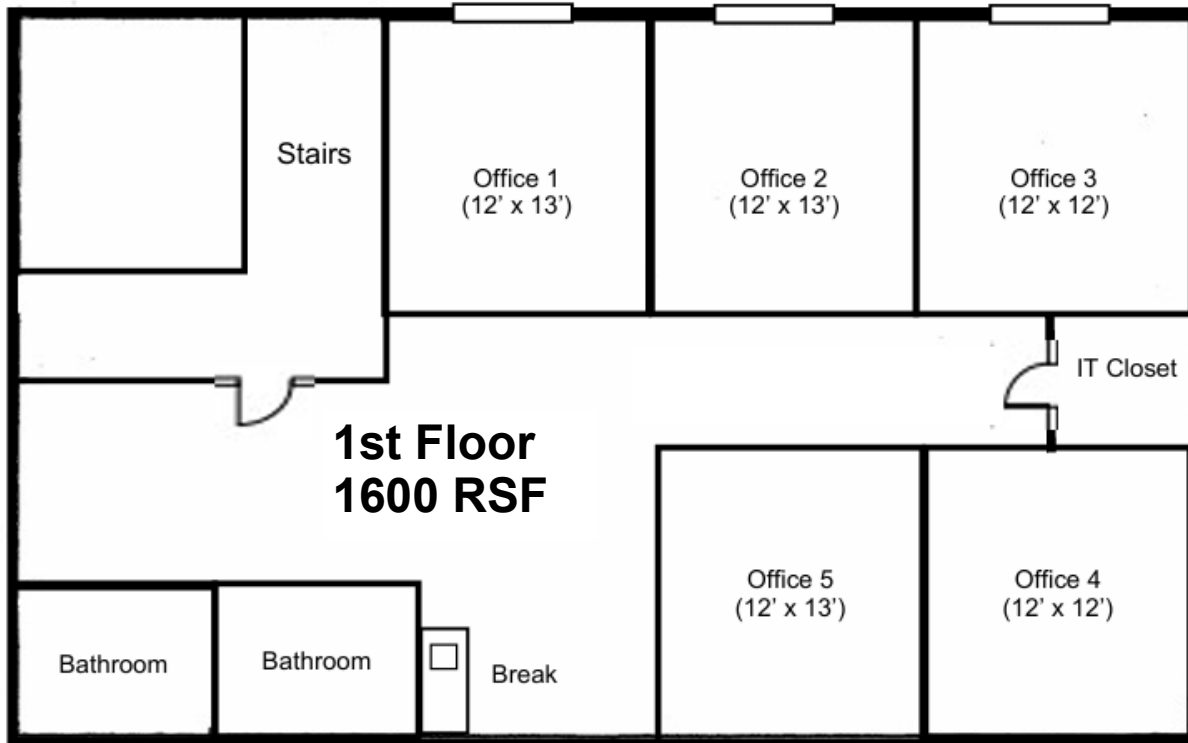


Call: Gary Mankin, **CCIM, Re/Max Savannah**
(p) +1 912 355 7711 (p) +1 912 650 2720
(m) +1 404 590 3076 gwmankin@gmail.com

This Information is provided for advertising and general information purposes only and is subject to errors, omissions, prior sales/leases and withdrawal without notice. NO REPRESENTATION OR WARRANTY IS GIVEN, EXPRESS OR IMPLIED, AS TO THE ACCURACY OF THE INFORMATION contained herein. You assume without limitation all risk, all liability for loss and damages resulting from reliance on this information. **Tenant/Buyer has the responsibility to verify all information contained herein.**

**FOR
LEASE**

2215A W Bay Street, Savannah, Georgia 31415
3,200 RSF (1,600 RSF 1st Level & 1,600 RSF Office 2nd Floor
\$3,500.00 Monthly, \$13.13 RSF NNN, Includes Some Fenced Yard Space, Zoned B-C



To view a video clip of the Office Space use this link below:

<https://drive.google.com/file/d/1juqTgT5zdQjNjDgu7KUNrqXqyWpC8Kq9/view?usp=sharing>



Call: Gary Mankin, CCIM, Re/Max Savannah
(p) +1 912 355 7711 (p) +1 912 650 2720 (m) +1 404 590 3076
gwmankin@gmail.com



This Information is provided for advertising and general information purposes only and is subject to errors, omissions, prior sales/leases and withdrawal without notice. NO REPRESENTATION OR WARRANTY IS GIVEN, EXPRESS OR IMPLIED, AS TO THE ACCURACY OF THE INFORMATION contained herein. You assume without limitation all risk, all liability for loss and damages resulting from reliance on this information. **Tenant/Buyer has the responsibility to verify all information contained herein.**