

3632 FOOTHILL BLVD.
La Crescenta, CA 91214

FOR SALE
2,730 SF | \$2,000,000



HIGH EXPOSURE INDUSTRIAL BUILDING

MATT EHRLICH
Executive Vice President
d. 818 421 1661
mehrlich@naicapital.com
CA DRE #01936772

SEAN IEZZA
Associate
d. 805 233 5228
siezza@naicapital.com
CA DRE #02220089

NAI CAPITAL
15821 Ventura Blvd
Suite #320
Encino, CA 91436
818-905-2400

NAI Capital
COMMERCIAL REAL ESTATE SERVICES, WORLDWIDE

PROPERTY HIGHLIGHTS

Building Area:

2,730 SF

Land Area:

3,241 SF (0.07 AC)

Year Built:

1982

Loading Doors:

3

Clear Height:

14 Ft.

Power:

200 A/220 V Three Phase and 200 A/220 V Single Phase

Office Space:

228 SF

Stories:

2

Restrooms:

3

Parking:

5 Spaces

Sprinklered:

No

Zoning:

CH (Commercial Hillside)

APN:

5604-018-028



Concrete
Driveway



Concrete
Block
Construction



Sodium
Halide
Lights



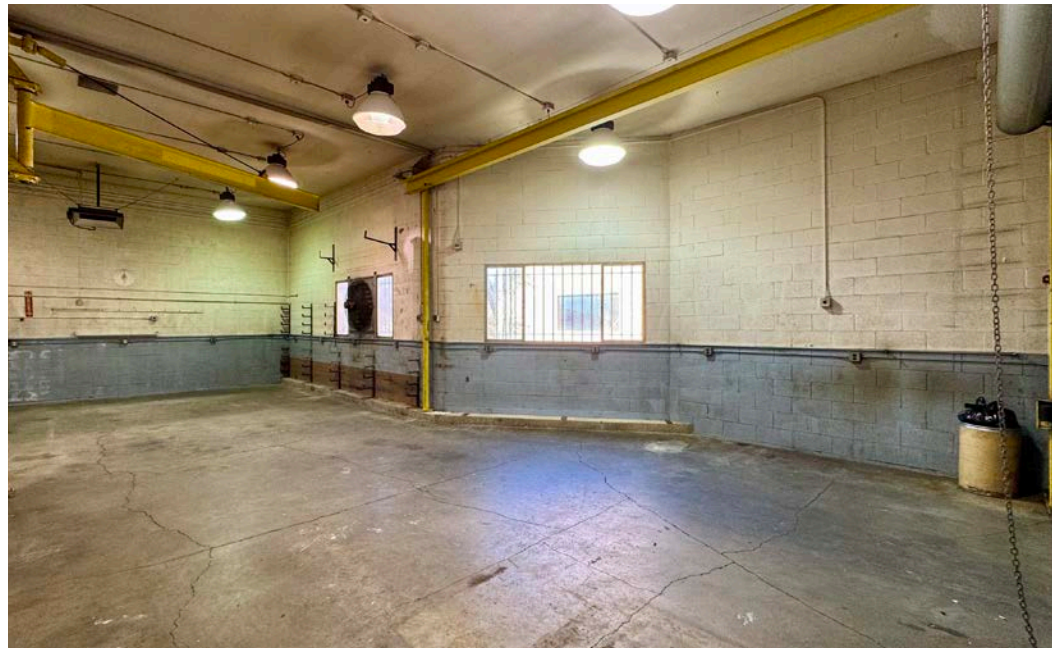
Excellent
Foothill Blvd.
Frontage



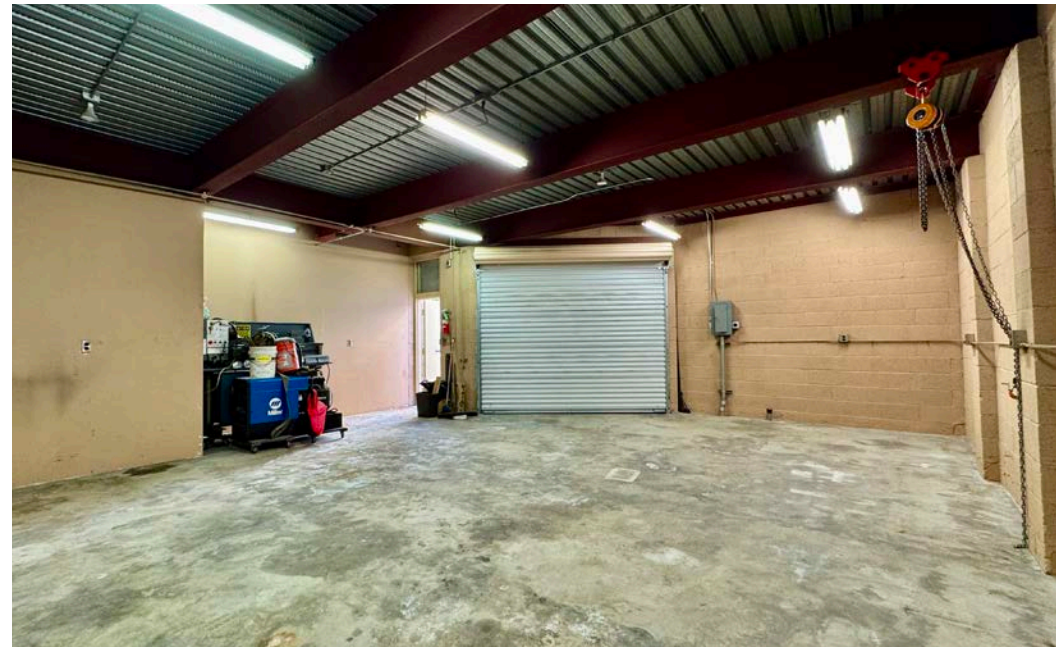
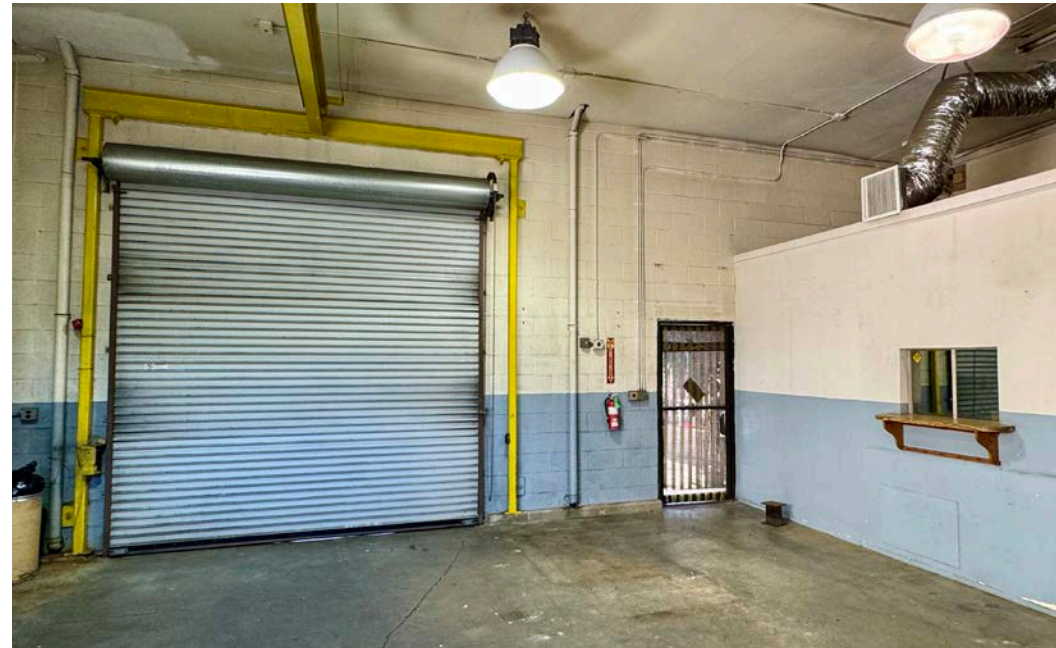
AERIAL MAP



PROPERTY PHOTOS



PROPERTY PHOTOS



PROPERTY PHOTOS



AMENITIES MAP



LOCATION MAP



3632 FOOTHILL BLVD.
La Crescenta, CA 91214

FOR SALE
2,730 SF | \$2,000,000



No warranty, express or implied, is made as to the accuracy of the information contained herein. This information is submitted subject to errors, omissions, change of price, rental or other conditions, withdrawal without notice, and is subject to any special listing conditions imposed by our principals. Cooperating brokers, buyers, tenants and other parties who receive this document should not rely on it, but should use it as a starting point of analysis, and should independently confirm the accuracy of the information contained herein through a due diligence review of the books, records, files and documents that constitute reliable sources of the information described herein. Logos are for identification purposes only and may be trademarks of their respective companies. NAI Capital, Inc. CA DRE Lic. #02130474

HIGH EXPOSURE INDUSTRIAL BUILDING

MATT EHRLICH
Executive Vice President
d. 818 421 1661
mehrlich@naicapital.com
CA DRE #01936772

SEAN IEZZA
Associate
d. 805 233 5228
siezza@naicapital.com
CA DRE #02220089

NAI CAPITAL
15821 Ventura Blvd
Suite #320
Encino, CA 91436
818-905-2400

NAI Capital
COMMERCIAL REAL ESTATE SERVICES, WORLDWIDE