



3550 ODESSA WAY

Aurora, CO

94,659 SF INDUSTRIAL SPACE FOR LEASE



NEWMARK

LBA Logistics 

BUILDING FEATURES

Two-Story Office Space | Fully Fenced Storage Area



8,371 SF

TOTAL OFFICE

1st Floor: ~4,125 SF
2nd Floor: ~4,246 SF



~10,693 SF

FENCED YARD



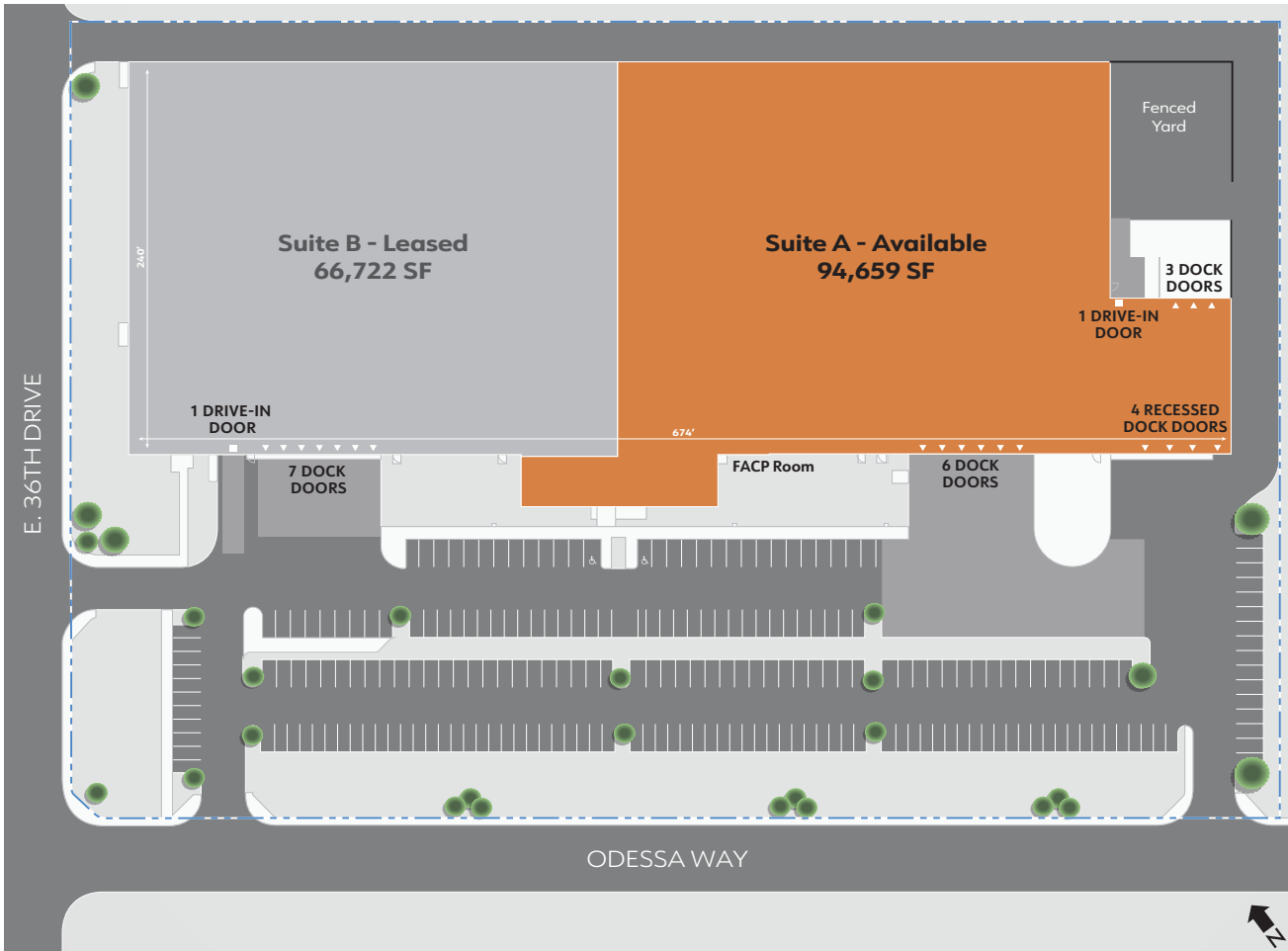
To Quote

ASKING RATE



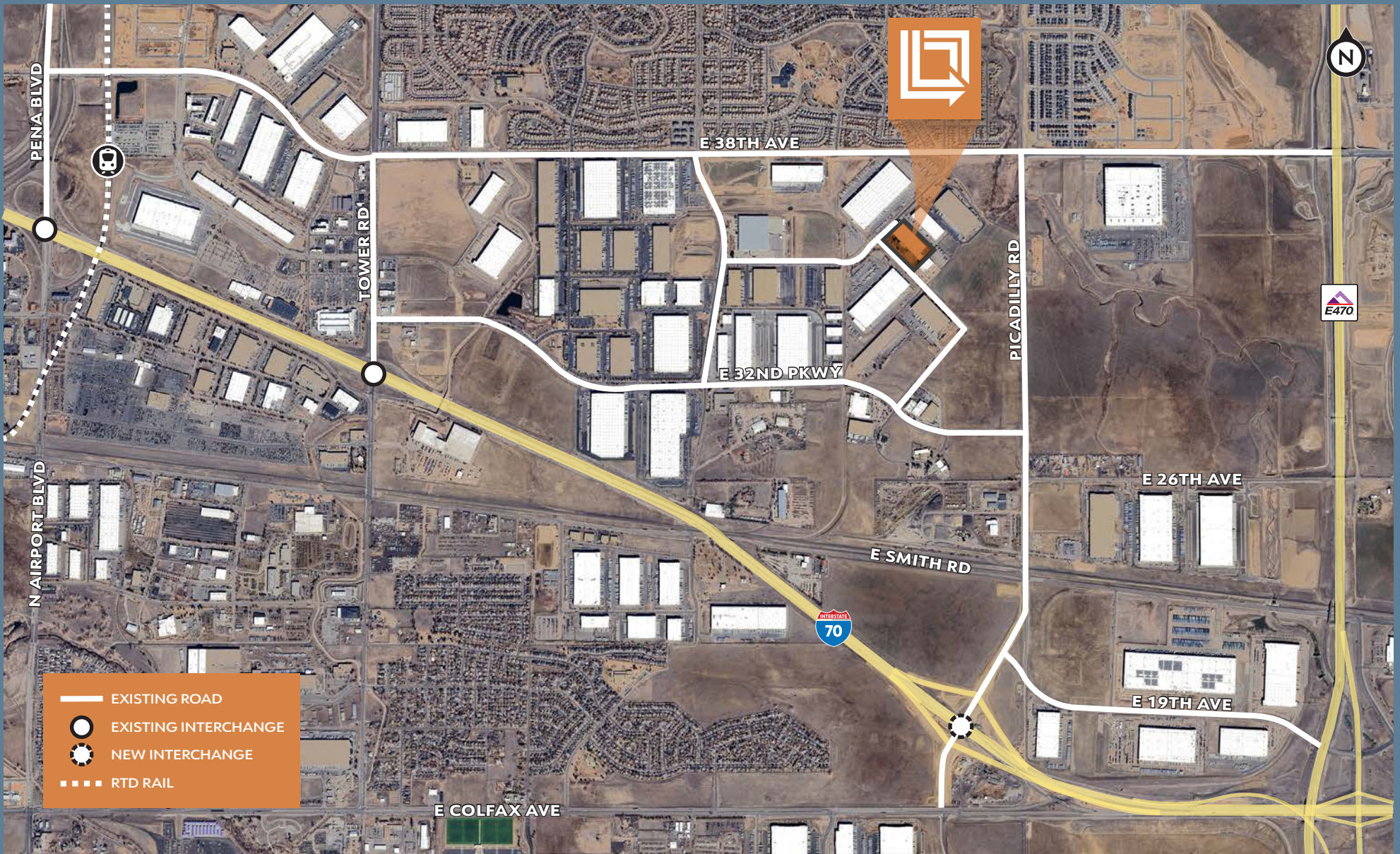
\$4.82/SF

OPERATING EXPENSES



- 1 Drive-In Ramp
- 9 Dock Doors With Levelers
- 4 Recessed Docks
- 23' Clear Height
- 240' Building Depth
- 8,371 SF 2-story Office Space
- ESFR Sprinkler System
- 480 V, 2800 Amp Power
- 1.1 / 1,000 SF Parking Ratio





15 MIN DRIVE
to Denver International Airport

20 MIN DRIVE
to Downtown Denver

EXCELLENT ACCESS
to I-70, E-470 and I-225

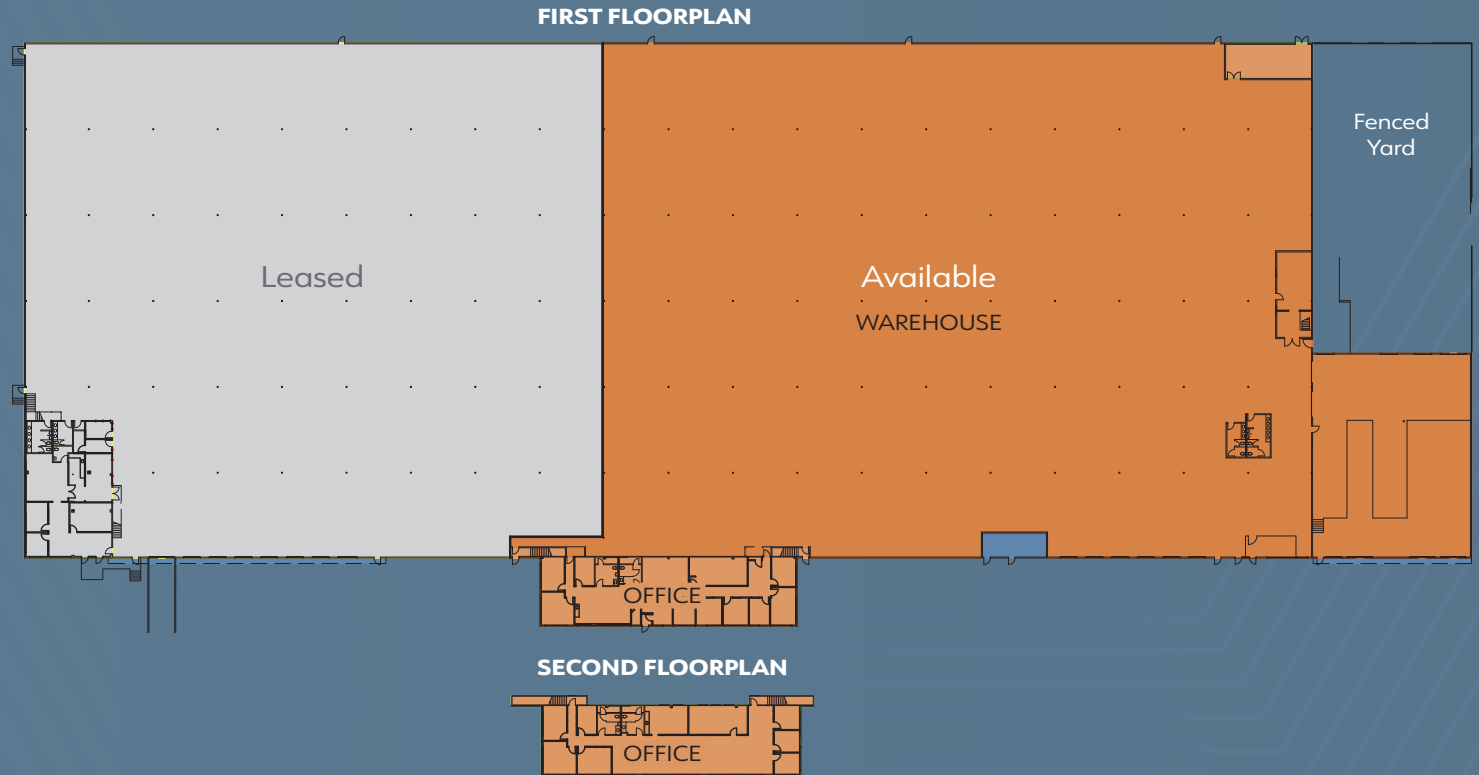
Close proximity to **RETAIL AMENITIES**

OPPORTUNITY ZONE TAX INCENTIVES

Located within Denver's **PREMIER INDUSTRIAL SUBMARKET**

NEW RTD COMMUTER RAIL
from Downtown to DIA

3550 ODESSA WAY



For more information contact:

MIKE WAFER, SIOR
mike.wafer@nmrk.com
303-260-4242

MICHAEL WAFER JR, SIOR
mike.waferjr@nmrk.com
303-260-4407

MIKE VIEHMANN, SIOR
mike.viehmnn@nmrk.com
303-260-4340



NEWMARK

LBALogistics 

The information contained herein has been obtained from sources deemed reliable but has not been verified and no guarantee, warranty or representation, either express or implied, is made with respect to such information. Terms of sale or lease and availability are subject to change or withdrawal without notice.