

East Hampton Village Retail

Multi-Tenant Building in the Shopping District



Key Details

Park Place Multi-Tenant Retail Building in the Center of East Hampton Village's Shopping District

Central to the East Hampton Village shopping experience are the buildings that affront the main Village parking lot along Park Place. Known for the alley way shops and unique boutiques, Park Place retail space is some of the most valued in all of the Hamptons!

Featuring **45ft of frontage** on Park Place, **32 Park Place** offers a single story structure with two retail units. The building is sidewalk adjacent to the north with an easement for a walking path on the western side of the property. The south facing wall is a "party wall" with 69 Main Street and the east facing wall is a "party wall" with 34 Park Place. Total parcel size is **0.061-acres**.

Unit 1 is 778sf and is leased to Latin Express

Unit 2 is 807sf and is leased to Marina St Barth

East Hampton retail demand has been one of the strongest in the history of the Hamptons with vendors vying to secure space. These dynamics have been steady and slow to change.

Unique opportunity for an owner-user or standard investment property.

Surrounding Neighbors:

Tutto Caffe, Double RL, Stone Source, John Papas Cafe, Aviator Nation, White's Apothecary, Bluemercury, Todd Snyder, Compass, VALENTINO, Obligato, Gubbins, JPMorgan Chase

Inquire with the Hamptons Commercial RE Team for additional information.

Tax Map #: 0301-003.00-06.00-021.002

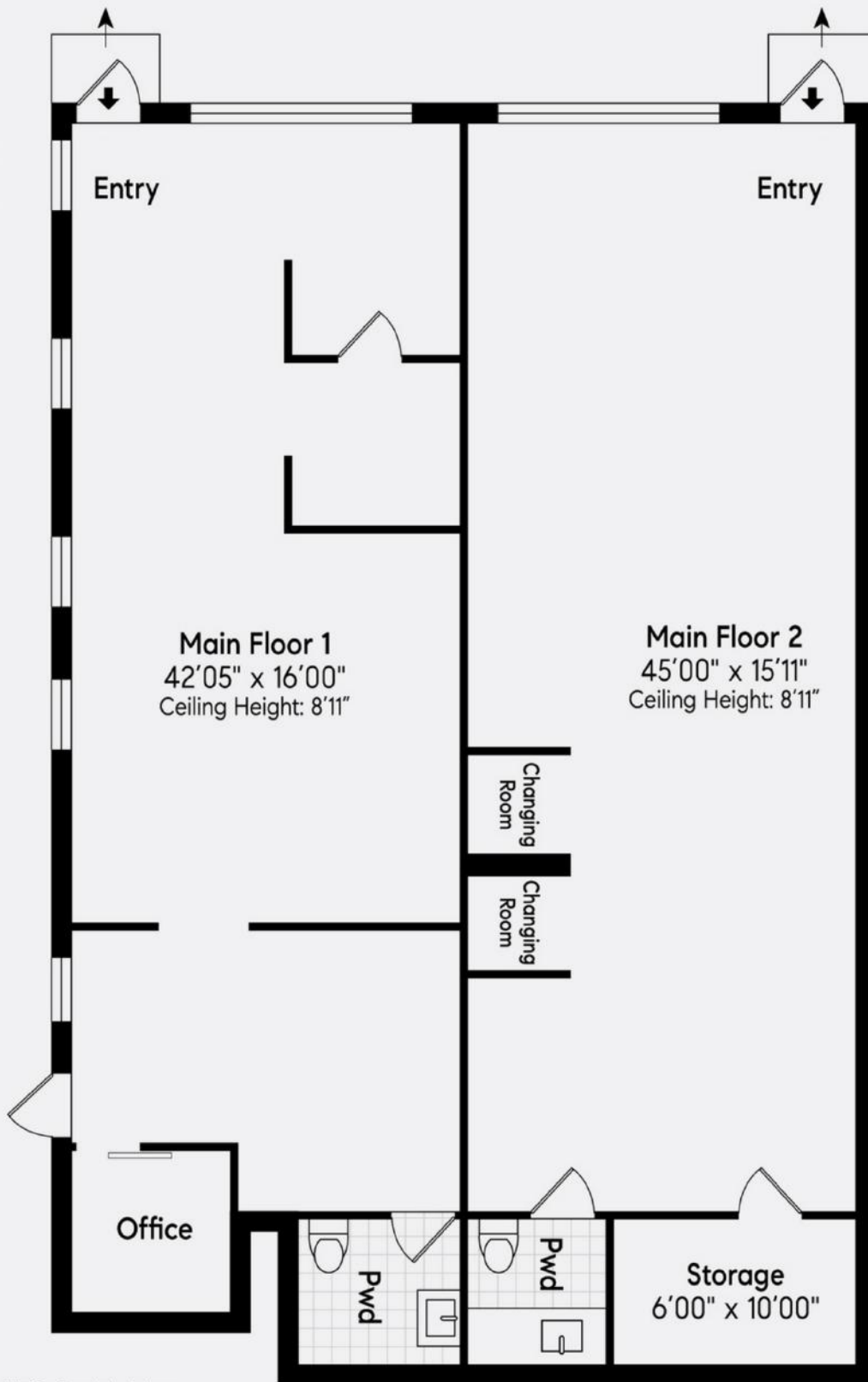
2023 Town Taxes - \$6,180.90











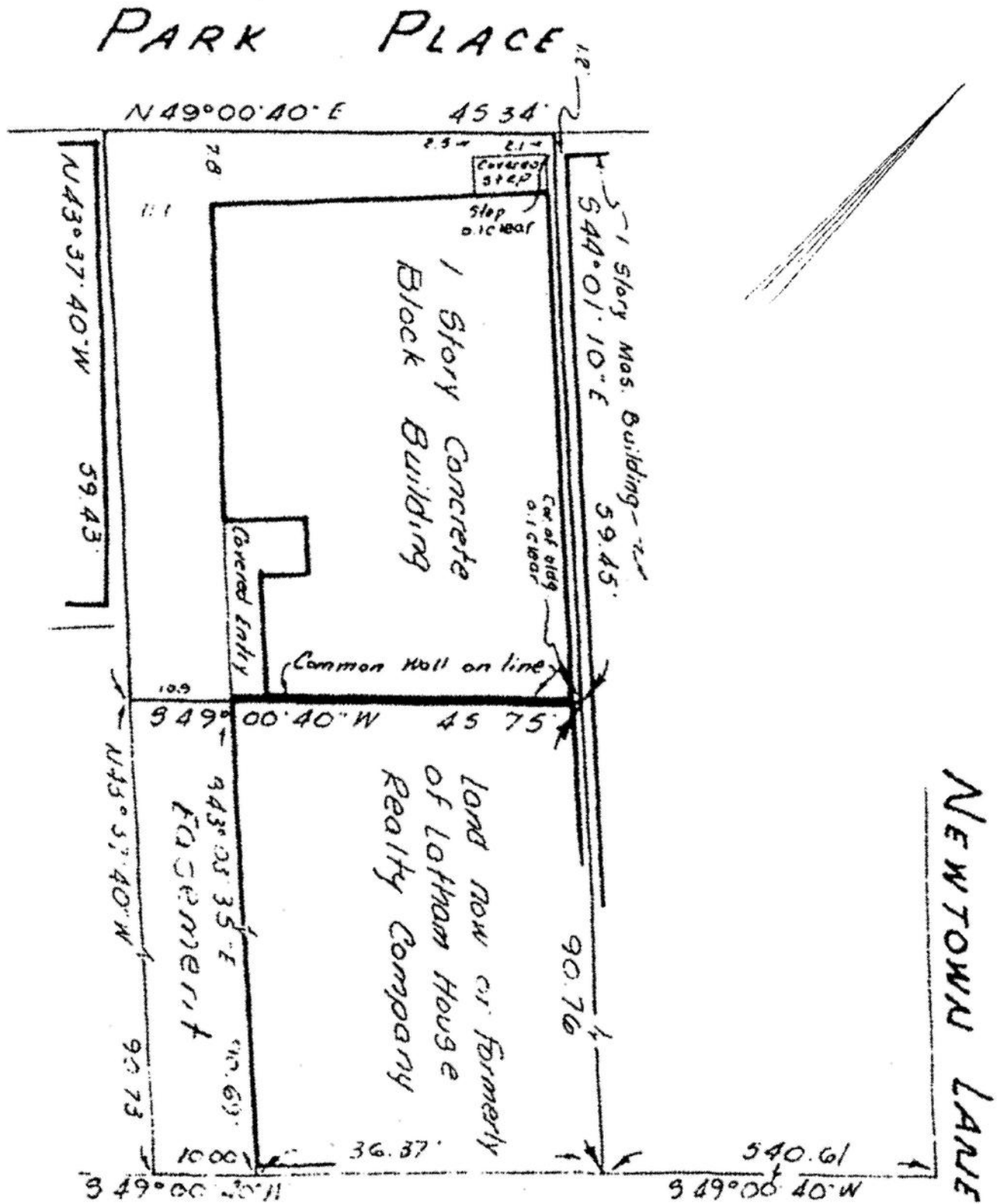
Main Floor 1: 778 Sq Ft Net
Main Floor 2: 807 Sq Ft Net
Total: 1,585 Sq Ft Net

Floor plan, furniture, and fixture measurements and dimensions are approximate and are for illustrative purposes only. The representative gives no guarantee, warranty or representation as to the accuracy and completeness of the floor plan.



**HAMPTONS COMMERCIAL
REAL ESTATE TEAM**

Apprx Sq. Ft.:
1,585



Floor plan, furniture, and fixture measurements and dimensions are approximate and are for illustrative purposes only. The representative gives no guarantee, warranty or representation as to the accuracy and completeness of the floor plan.



**HAMPTONS COMMERCIAL
REAL ESTATE TEAM**

**Apprx Acreage:
0.061**

East Hampton Village

HAMPTONS COMMERCIAL REAL ESTATE TEAM

Main Street East Side

- 1 Citarella
- 2 London Jewelers
- 3 Rowdy Hall
- 4 LOEWE
- 5 Douglas Elliman
- 6 Sothebys
- 7 Vilebrequin
- 8 Movie Theatre
- 9 Nili Lotan
- 10 Vince
- 11 Dylans Candy Bar
- 12 Zadig Et Voltair
- 13 Chase Bank
- 14 The Palm Restaurant
- 15 J CREW

Main Street West Side

- 16 Aviator Nation
- 17 Reformation
- 18 Stoney Clover
- 19 White's Apothecary
- 20 Compass
- 21 Restoration Hardware
- 22 Blue Mercury
- 23 Ralph Lauren Barn
- 24 Set Point Tennis
- 25 Loro Piana
- 26 Bookhampton
- 27 Starbucks
- 28 Ralph Lauren
- 29 Roller Rabbit
- 30 Mayfair Jewelers
- 31 Louis Vuitton
- 32 Valentino
- 33 Corcoran Real Estate

Newtown Lane South Side

- 34 AERIN
- 35 The Monogram Shop
- 36 Tenet
- 37 Blue Parrot
- 38 Cittanuova
- 39 Brunello Cucinelli
- 40 New York Pilates
- 41 Room & Board
- 42 Oliver Peoples
- 43 Orlebar Brown



Newtown Lane North Side

- 44 Sant Ambroeus
- 45 Isabel Marant
- 46 James Pearse
- 47 Shoe Inn
- 48 rag & bone
- 49 Sam's Pizza
- 50 Golden Pear
- 51 Village Hardware
- 52 CHANEL
- 53 Bank of America
- 54 Eric Firestone Gallery
- 55 Prada

Park Place

- 56 AT&T Store
- 57 Fierro's Pizzo
- 58 Park Place Wine and Liquor
- 59 Carelle Jewelry
- 60 Warren Tricomi East Hampton
- 61 Gubbins
- 62 Khanh Sports
- 63 John Papa's Cafe

East Hampton

East Hampton is a Village within the Township of East Hampton located just 95 miles east of Manhattan. The area was settled in 1660 and was later incorporated as a village in 1920. The estates, beaches, restaurants, shops, parks, farms, wineries, and proximity to New York City that East Hampton has attracts international appeal.

In 2019, East Hampton, NY had a population of 869 people with a median age of 62.9 and a median household income of \$109,250. Between 2018 and 2019 the population of Southampton, NY declined from 1,034 to 869, a 16% decrease and its median household income grew from \$90,750 to \$109,250, a 20.4% increase.

The 5 largest ethnic groups in East Hampton, NY are:

White (Non-Hispanic) (84.3%)

White (Hispanic) (5.06%)

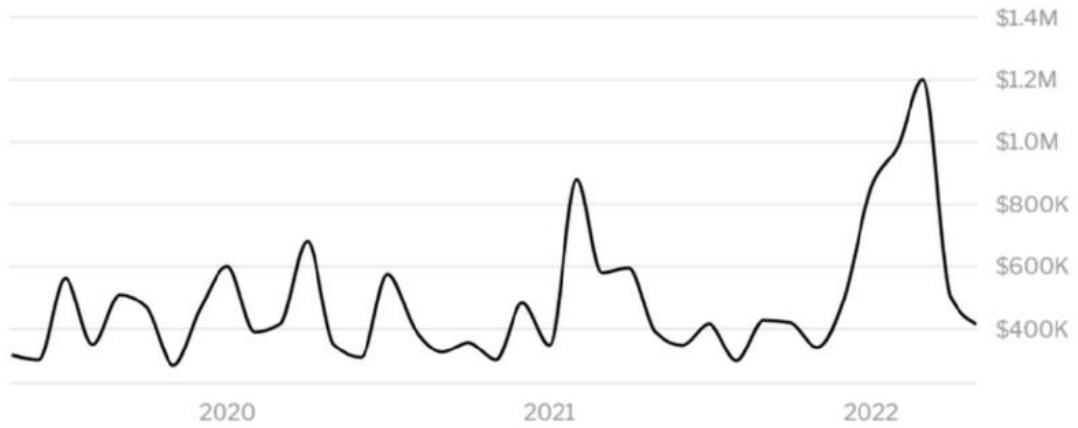
Two+ (Non-Hispanic) (4.49%)

Black or African American (Non-Hispanic) (2.42%)

Asian (Non-Hispanic) (1.61%)

During the 18th and 19th centuries, fishing, farming (especially potatoes and the local sweet corn) and duck raising were the predominant industries. Today, East Hampton is regarded as one of the premier summer resort areas in the country - being home to approximately half of the billionaires who have residences in the eight hamlets and villages that constitute the Hamptons.

East Hampton is served by Montauk Highway (NY 27A). Montauk Highway serves as the "Main Street" of many hamlets and villages along the south shore of Long Island. The Long Island Rail Road provides limited rail service seven days per week via the Montauk Branch connecting East Hampton to Montauk and New York City.



HOME VALUE



INCOME DISTRIBUTION



Hal Zwick

Lic. R.E. Salesperson
631.678.2460
hal.zwick@compass.com



Jeffrey Sztorc

Lic. R.E. Salesperson
631.903.5022
jeffrey.sztorc@compass.com