

Industrial | For Lease

CBRE

AVAILABLE NOW

370 South 22nd St.

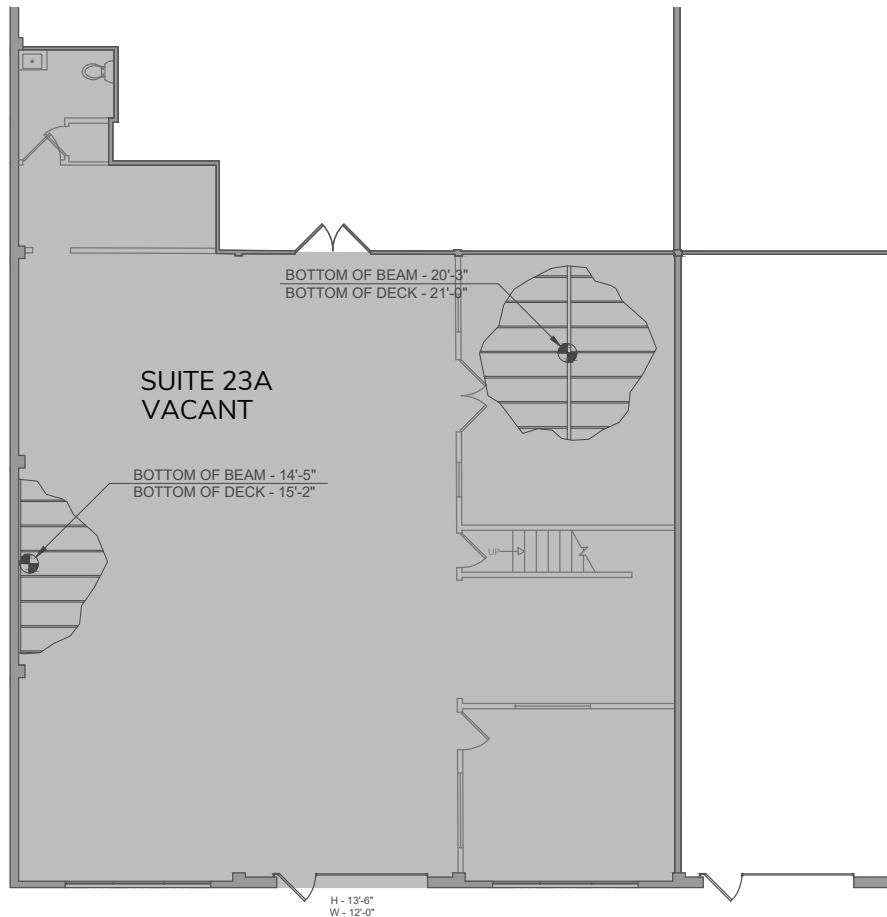
Units 23A, 23C & 23D

San Jose, CA 95116
www.cbre.com

±811 SF - ±2,877 SF



Units 23A



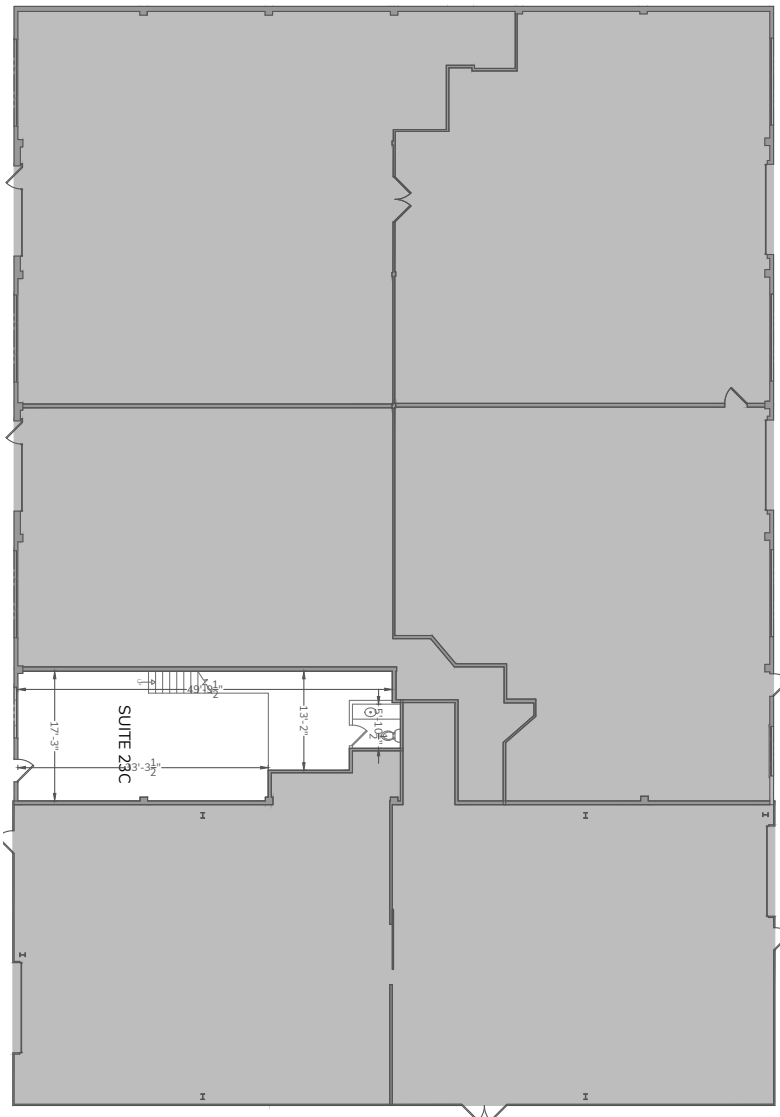
NOT TO SCALE



Property Highlights

- + ±2,877 SF
- + Available Now
- + Unit 23A
- + Power
- + Natural Gas Line
- + ±1,200 SF of Concrete Yard for Parking or Storage
- + Private Offices
- + Private Restroom
- + 1 Roll Up Door
- + Fire Sprinklers
- + 514 SF Bonus Mezzanine
- + Some Auto Uses Will Be Considered

Units 23C



NOT TO SCALE

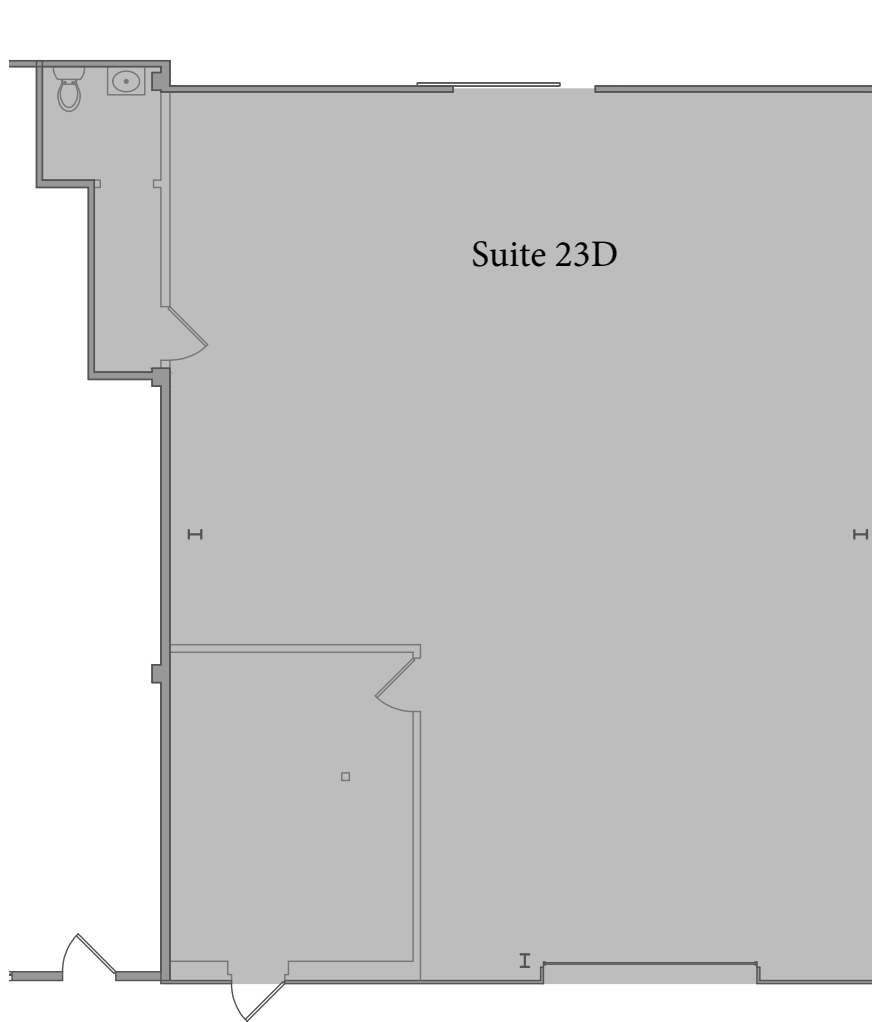
Property Highlights

- + ±811 Square Feet
- + Bonus Mezzanine Area
- + 1 Bathroom
- + Former Tenants included a small craft brewery and a carpenter
- + Floor Drains
- + Air Filtration Device in place for wood working
- + Sprinklered
- + Reznor Heater
- + 1 pedestrian door
- + 1 bathroom

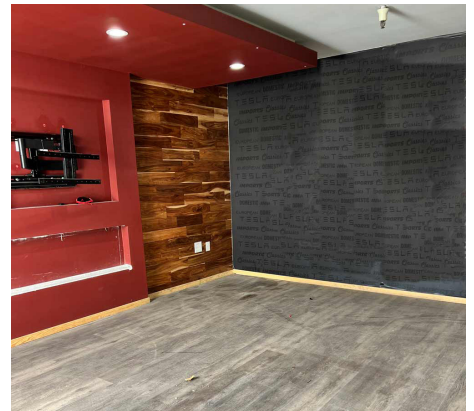
Floor Plan

370 South 22nd St
San Jose, CA 95116

Units 23D

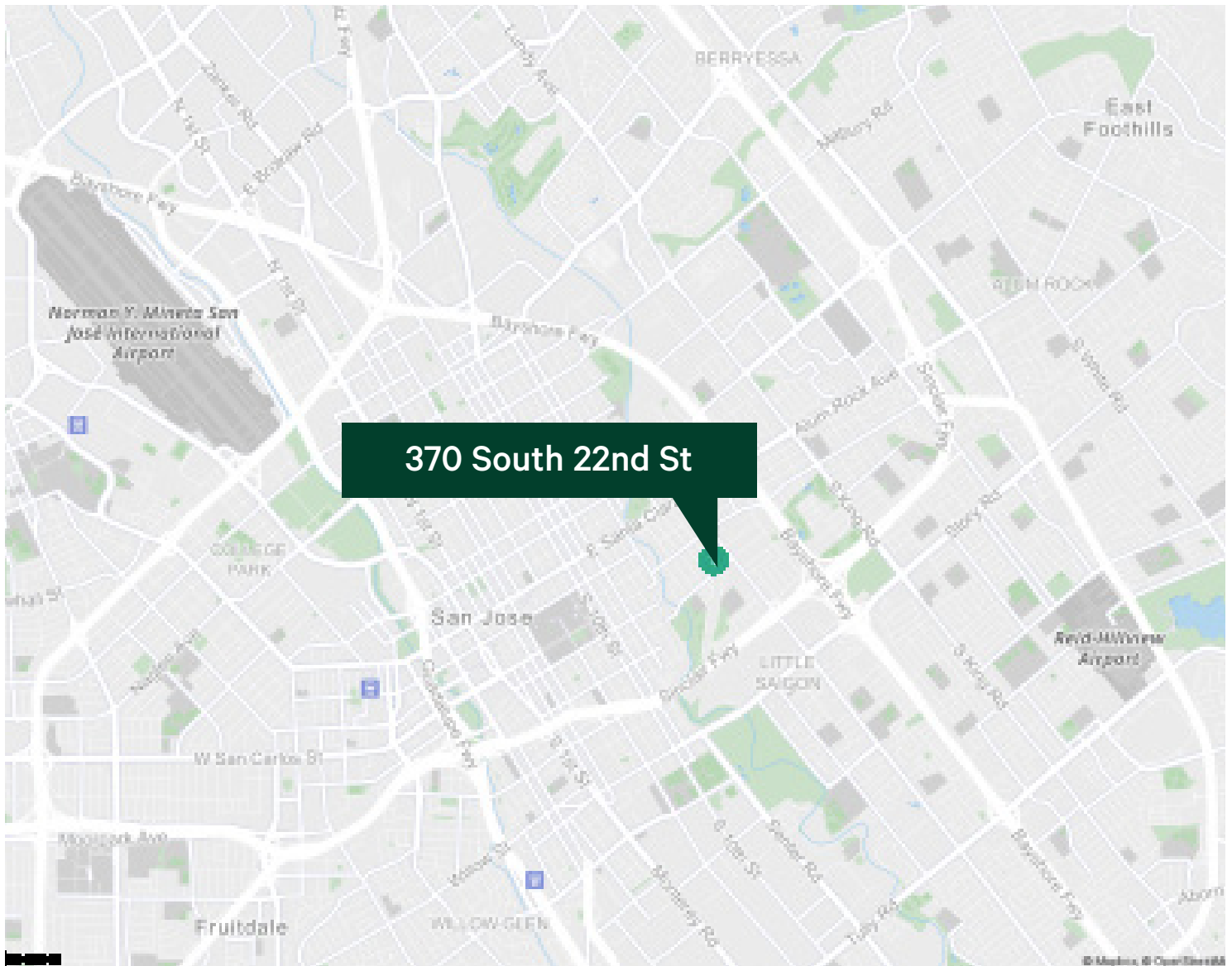


NOT TO SCALE



Property Highlights

- + ±2,100 SF
- + 1 Roll Up Door
- + 1 Office
- + 1 Restroom
- + 16' Clear Height
- + Epoxy Floors
- + Fire Sprinklers
- + Entry is off of South 23rd Street



Contact Us

Terence Fox

Vice President
+1 408 453 7477
terence.fox@cbre.com
Lic. 02068798

© 2025 CBRE, Inc. All rights reserved. This information has been obtained from sources believed reliable but has not been verified for accuracy or completeness. CBRE, Inc. makes no guarantee, representation or warranty and accepts no responsibility or liability as to the accuracy, completeness, or reliability of the information contained herein. You should conduct a careful, independent investigation of the property and verify all information. Any reliance on this information is solely at your own risk. CBRE and the CBRE logo are service marks of CBRE, Inc. All other marks displayed on this document are the property of their respective owners, and the use of such marks does not imply any affiliation with or endorsement of CBRE. Photos herein are the property of their respective owners. Use of these images without the express written consent of the owner is prohibited.