

Quality Space To
Grow Your Business
**RETAIL SPACE
AVAILABLE**

The Plaza at Centerstone is an upscale retail and lifestyle center like none other in Conway. With an outdoor courtyard and water feature welcoming you as you enter, this prime location offers exciting opportunities within the thriving and rapidly growing Centerstone community—making it the perfect place for your business to flourish.

✓ Phase II
Availability

Suite 201 ■ 6,000 SF \$19/FT,NNN

Leasing fee available.

Why Choose us?

- Maximum Visibility & Access Location
- Rapidly Expanding Residential & Retail
- Across The Street From UCA
- Easy Access To I-40
- 750+ Apartments Within Walking Distance

Conway, AR
Demographics



Population
73,068



Avg. HH Income
\$83,756

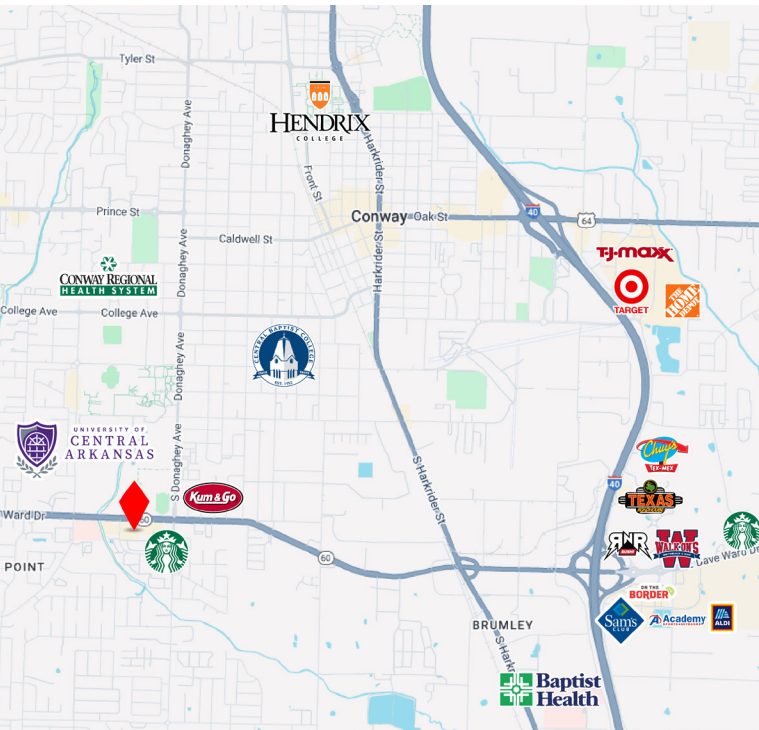


Dave Ward Dr.
Traffic Count
35,000+



the plaza at CENTERSTONE

2235 Dave Ward Dr,
Conway, AR



Phase II

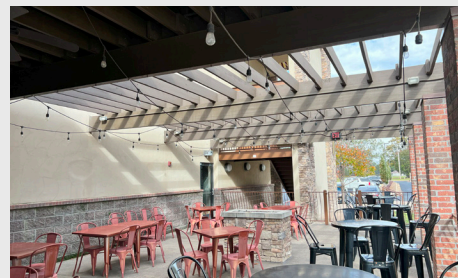
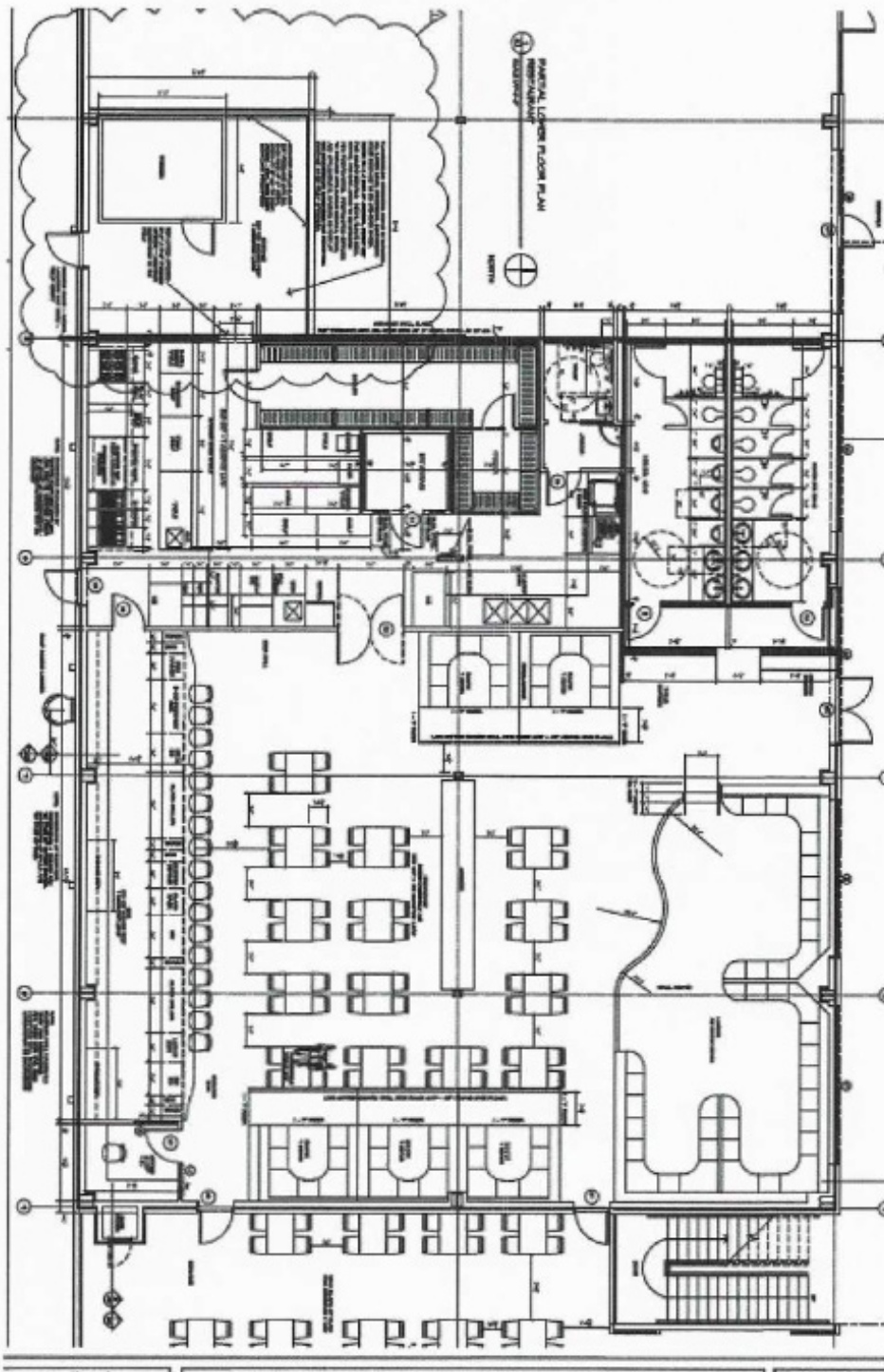
Suite 201
6,000 SF

Key Features

- Final Suite Available
- Courtyard Fountain Feature
- Outdoor Patio Area
- Near Major Intersection
- Ample On-site Parking

the plaza at CENTERSTONE

2235 Dave Ward Dr,
Conway, AR



Suite 201

Floorplan

