

FISK BUILDING SUBLEASE

1621 E Hennepin Ave | Minneapolis | MN 55413



PROPERTY INFORMATION

SUBLEASE HIGHLIGHTS

- Sublease expiration date is 3/31/28 for both spaces
- Emergency generator
- Suite B15 (5,686 SF) contains ISO 7 & ISO 8 clean rooms for cell cultures, lab, DI Water System, nitrogen and CO2 gases
- Suite B26 (5,058 SF) recently built cell culture lab with nitrogen and CO2 gases
- Three (3) common dock high loading docks

BUILDING INFORMATION

BUILDING AREA:

132,300 SF total

YEAR BUILT/RENOVATED:

1919/2017

NET LEASE RATE PSF:

NEGOTIABLE

TAX & CAM:

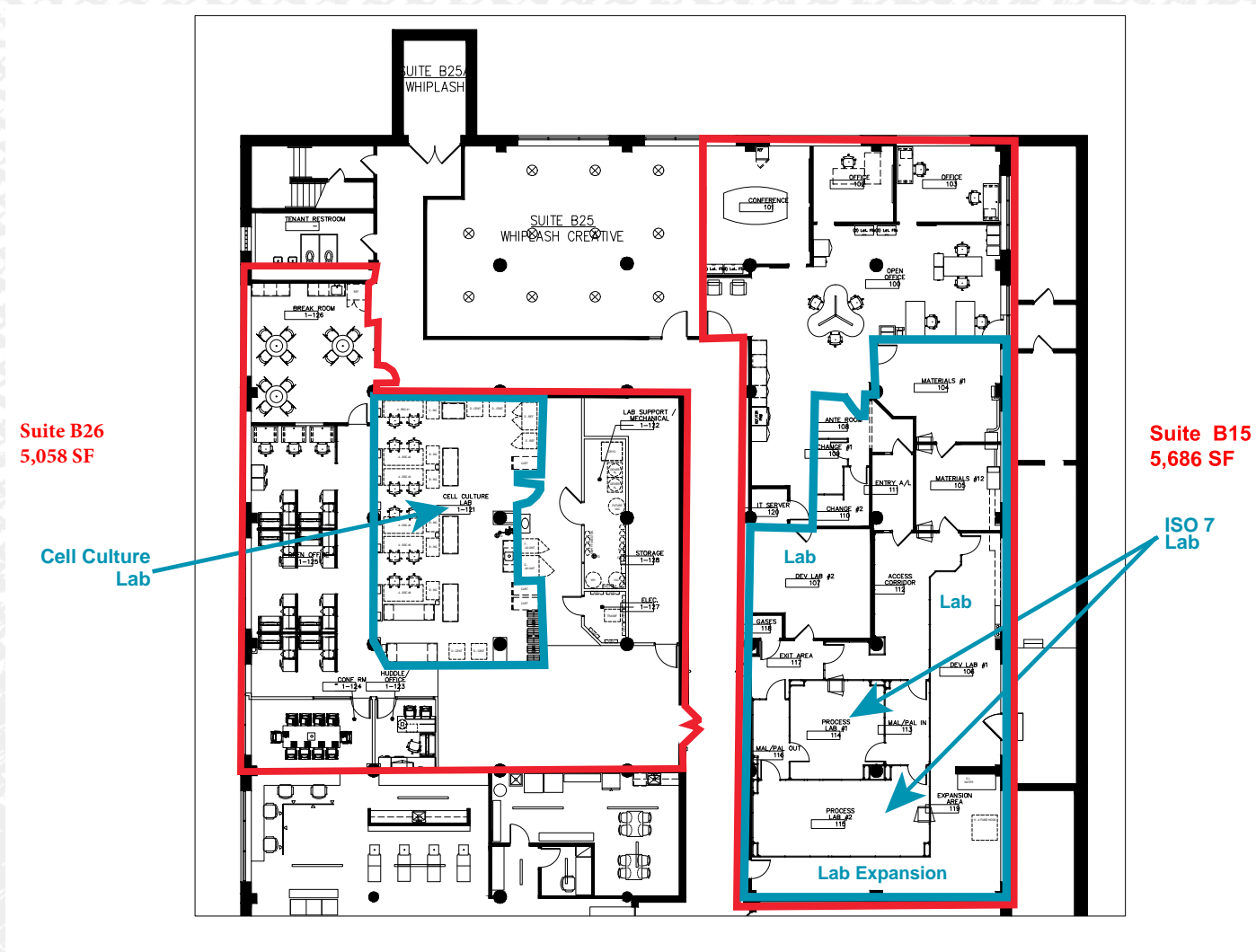
\$ 7.16 CAM

\$ 2.44 TAX

\$ 9.60 TOTAL PSF



FLOOR PLAN



PHOTOS



LOCATION MAP



FOR MORE INFORMATION, PLEASE CONTACT:

Tom Stella
Managing Director
+1 651 734 2383
tom.stella@cushwake.com

Eric King
Managing Director
+1 651 734 2385
eric.king@cushwake.com

©2025 Cushman & Wakefield. All rights reserved. The information contained in this communication is strictly confidential. This information has been obtained from sources believed to be reliable but has not been verified. NO WARRANTY OR REPRESENTATION, EXPRESS OR IMPLIED, IS MADE AS TO THE CONDITION OF THE PROPERTY (OR PROPERTIES) REFERENCED HEREIN OR AS TO THE ACCURACY OR COMPLETENESS OF THE INFORMATION CONTAINED HEREIN, AND SAME IS SUBMITTED SUBJECT TO ERRORS, OMISSIONS, CHANGE OF PRICE, RENTAL OR OTHER CONDITIONS, WITHDRAWAL WITHOUT NOTICE, AND TO ANY SPECIAL LISTING CONDITIONS IMPOSED BY THE PROPERTY OWNER(S). ANY PROJECTIONS, OPINIONS OR ESTIMATES ARE SUBJECT TO UNCERTAINTY AND DO NOT SIGNIFY CURRENT OR FUTURE PROPERTY PERFORMANCE.

