

# FOR SALE

## 21 Acres RESIDENTIAL



**21 Acres**

**\$1,300,000**

**Denton Road  
CANTON TOWNSHIP, MICHIGAN**

- Fantastic Development Opportunity in Highly Desirable Canton Township
- Water, Sewer, Gas and Electric are all Available
- Two Conceptual Site Plans Attached for Review
- Possible Condominium Development with Township Approval
- Please Contact Agent for Additional Information

Zoning	R-2 <i>Residential</i>	Lot Size	21 Acres
Water	Yes	Gas	Yes
Sewer	Yes	Electric	Yes
Parcel ID#	71-120-99-0010-709		

**Burger**

& COMPANY

38345 W. 10 Mile Road, Suite 100  
Farmington Hills, MI 48335

**248.536.2888**

WWW.BURGERCOLLC.COM

**John O'Brien**

Principal

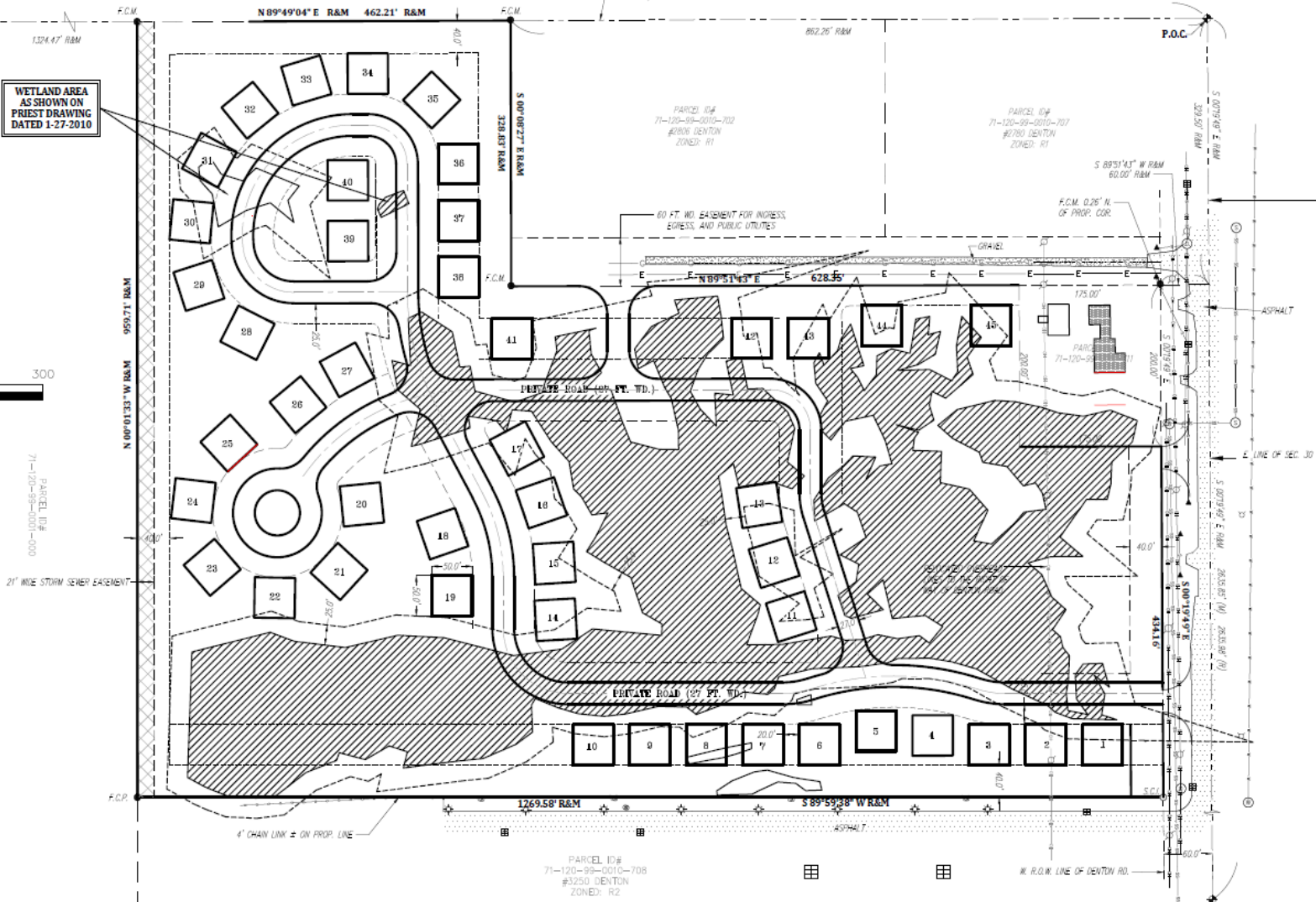
Cell: 248.342.8383

john@burgercollc.com

Information contained herein is deemed to be reliable but is not guaranteed and may be withdrawn at any time.

# Conceptual Plan 1

**\*\*Conceptual Plan Only---Subject to Canton Twp Approval\*\***



**Burger**

& COMPANY

38345 W. 10 Mile Road, Suite 100  
Farmington Hills, MI 48335

**248.536.2888**

[WWW.BURGERCOLLC.COM](http://WWW.BURGERCOLLC.COM)

**John O'Brien**

Principal

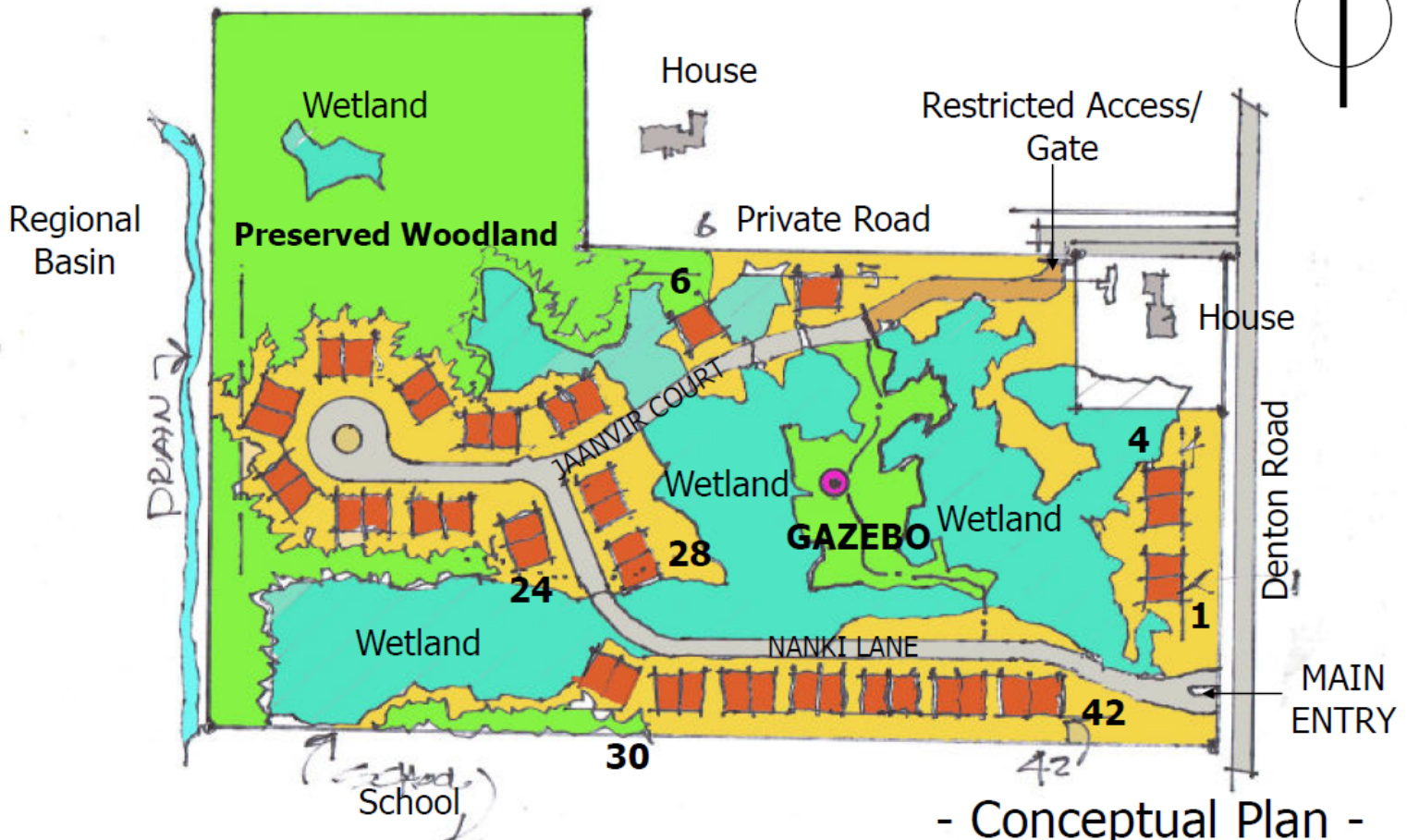
Cell: 248.342.8383

[john@burgercollc.com](mailto:john@burgercollc.com)

Information contained herein is deemed to be reliable but is not guaranteed and may be withdrawn at any time.

# Conceptual Plan 2

**\*\*Conceptual Plan Only---Subject to Canton Twp Approval\*\***



Site Size: 21.0 acres  
40 Duplex Units  
2 SFR Units **Total : 42 Units**

- Conceptual Plan -  
**ROSELIN PARK PROJECT**  
Canton Twp, Wayne Co.

Client: Bill Bains

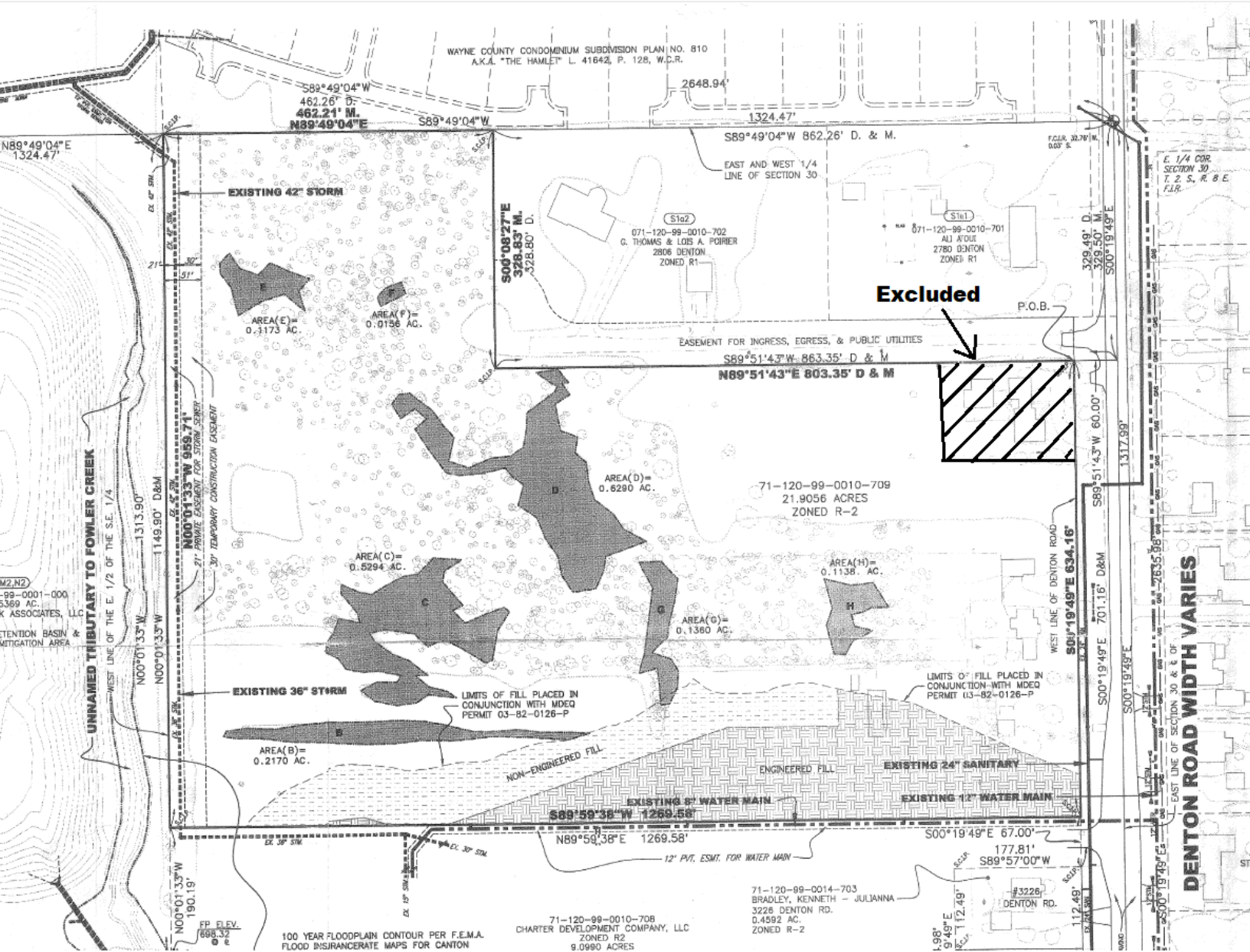
Holloway EPI #21-002  
June 2, 2021

**Burger**  
& COMPANY

38345 W. 10 Mile Road, Suite 100  
Farmington Hills, MI 48335  
**248.536.2888**  
WWW.BURGERCOLLC.COM

**John O'Brien**  
Principal  
Cell: 248.342.8383  
john@burgercollc.com

# Survey



**Burger**

& COMPANY

38345 W. 10 Mile Road, Suite 100  
Farmington Hills, MI 48335

248.536.2888

WWW.BURGERCOLLC.COM

**John O'Brien**

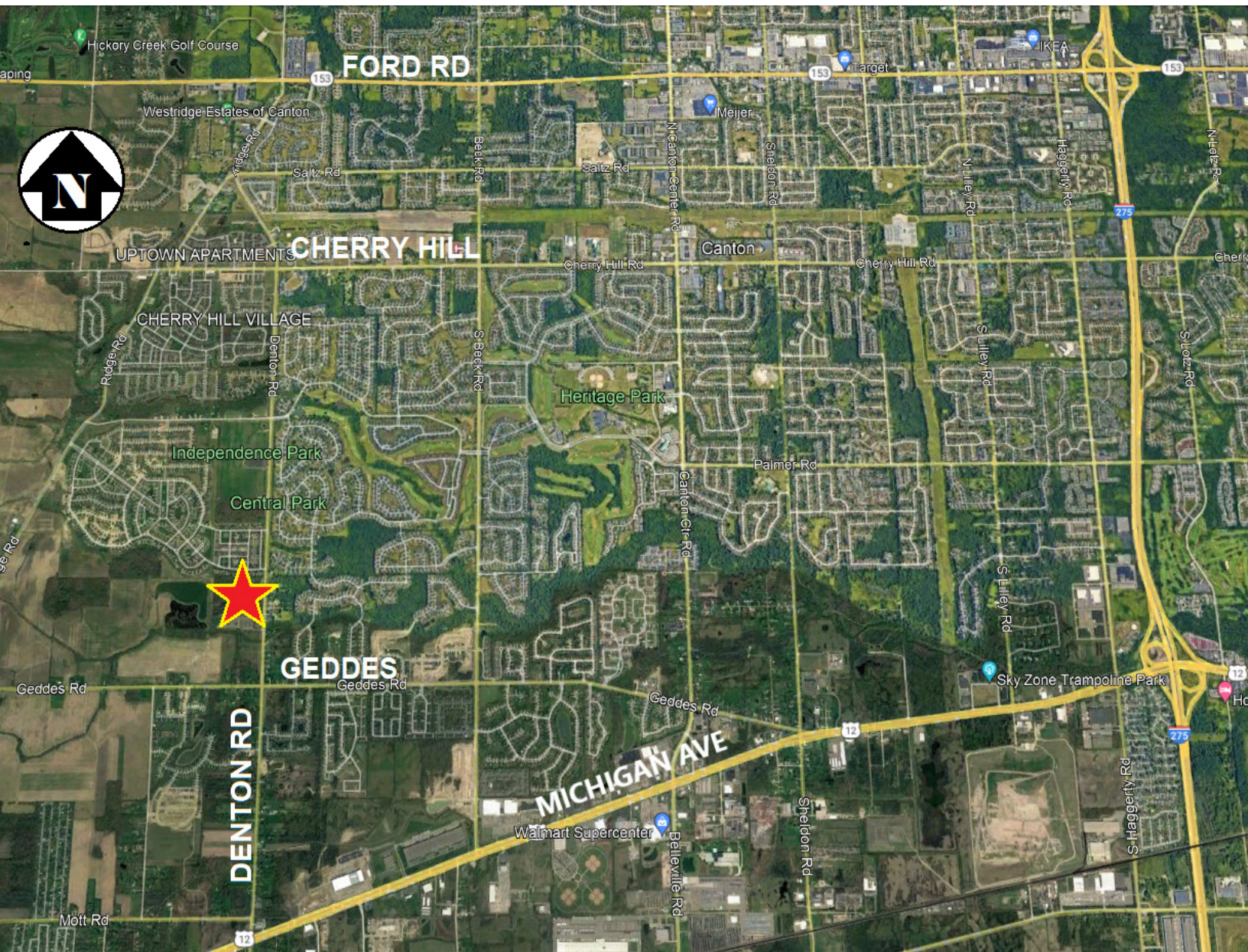
Principal

Cell: 248.342.8383

john@burgercollc.com

Information contained herein is deemed to be reliable but is not guaranteed and may be withdrawn at any time.

# Location Map



**Burger**

& COMPANY

38345 W. 10 Mile Road, Suite 100  
Farmington Hills, MI 48335

**248.536.2888**

[WWW.BURGERCOLLC.COM](http://WWW.BURGERCOLLC.COM)

**John O'Brien**

Principal

Cell: 248.342.8383

[john@burgercollc.com](mailto:john@burgercollc.com)

Information contained herein is deemed to be reliable but is not guaranteed and may be withdrawn at any time.