

Allied

PROPERTY GROUP

# PRIME RETAIL FOR LEASE

## 67 Church Street, Greenwich CT



- Building:** 4,372+/- SF 1st Floor On grade
- Price:** \$7,000/mo + \$700 Nets
- Parking:** 2 On Site more it you park tandem
- Layout:**
- |                                |              |
|--------------------------------|--------------|
| Large Office with private bath | 250 +/- SF   |
| Large Storage/ Showroom Area   | 4,120 +/- SF |
- Comments:** Great Price & Great Downtown location. Space has 2 garage overhead doors, air conditioning and gas heat

Exclusive Agent  
Allied Property Group  
**Tom Torelli**  
203-661-5800 Ext. 1  
tom@alliedpropertygp.com

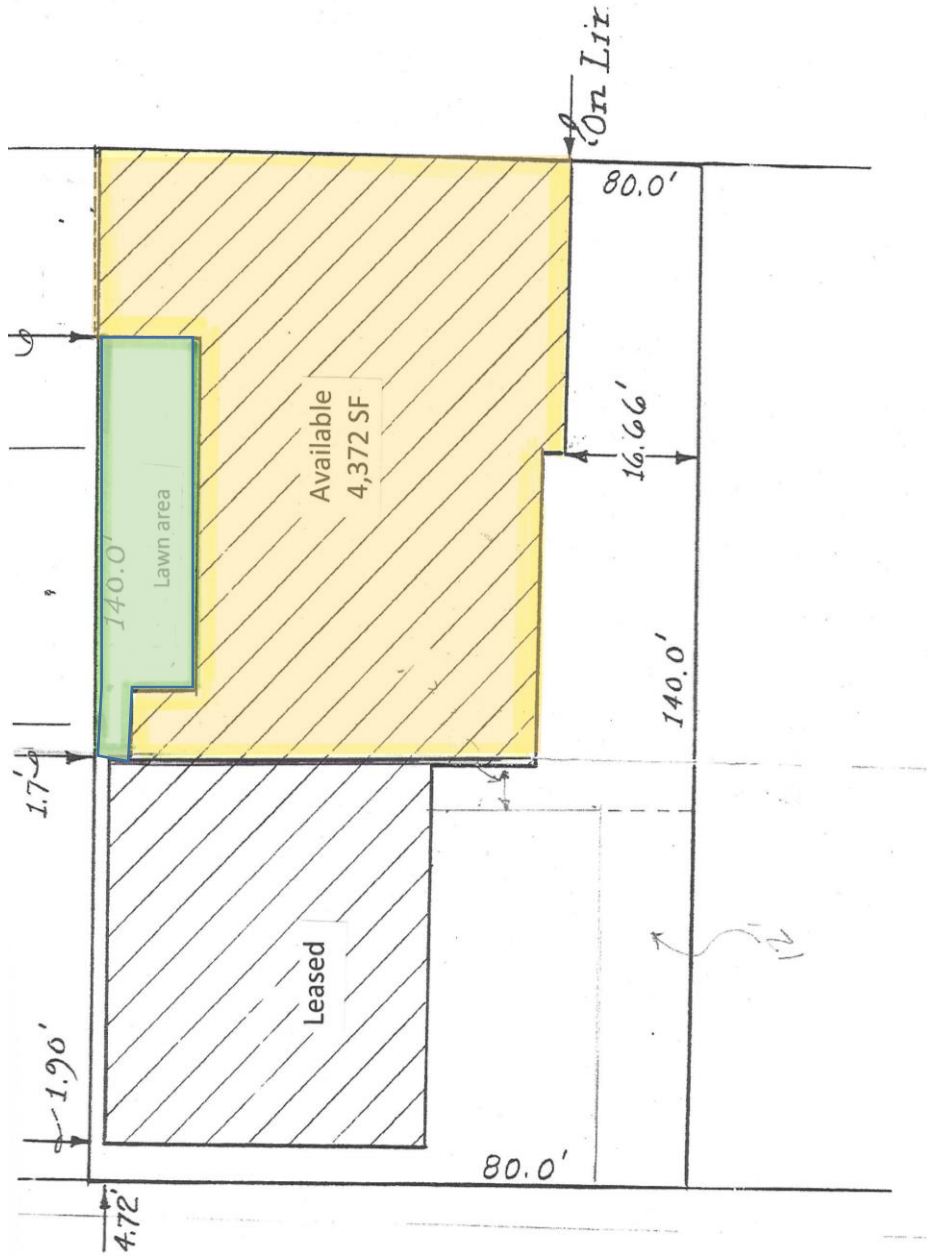
# Allied

PROPERTY GROUP



# Allied

PROPERTY GROUP



## 67 CHURCH STREET

Exclusive Agent  
Allied Property Group  
**Tom Torelli**  
203-661-5800 Ext. 1  
tom@alliedpropertygp.com