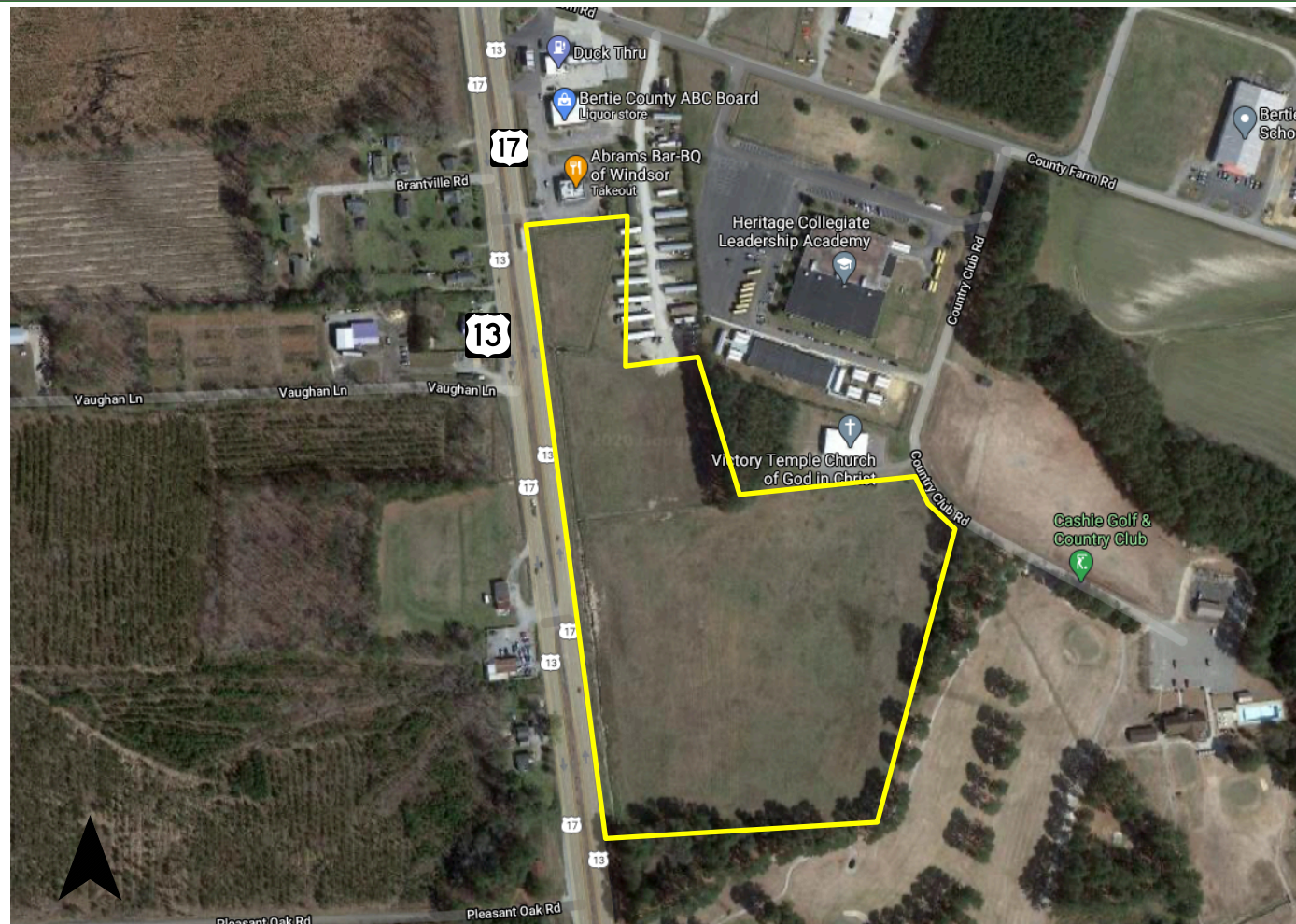


OVERVIEW

133-205 US 13-17 s.
18.41 +/- Acres Available

133-205 US 13-17 S.
Windsor, NC
Available for Sale
Asking: \$40,000 / Acre

- 18.41 +/- Acres Available
- Parcel Numbers:
 - 7351
 - 8889
 - 9644
 - 9381
 - 3546
- Zoning : C-2 Highway Commercial District
- Apx. 1500 Feet of Road Frontage along US 17
- Flat Cleared site with great access and visibility to US 13-17
- US 13-17 : Apx 13,000 VPD



MULLARKEY
REAL ESTATE GROUP

Justin A. Mullarkey | Principal Broker | CCIM
252-318-2200 | Justin@MullarkeyCREG.com

Nathan A. Mazzuca | Broker
252-318-2200 | Nathan@MullarkeyCREG.com

The information contained herein has been obtained from sources deemed reliable, however, no representation or warranty, either expressed or implied, is made to its completeness or accuracy. Prospective Buyers should make their own investigations to ascertain the accuracy of the material contained herein. This offering is subject to change, correction or withdrawal.

Location Overview

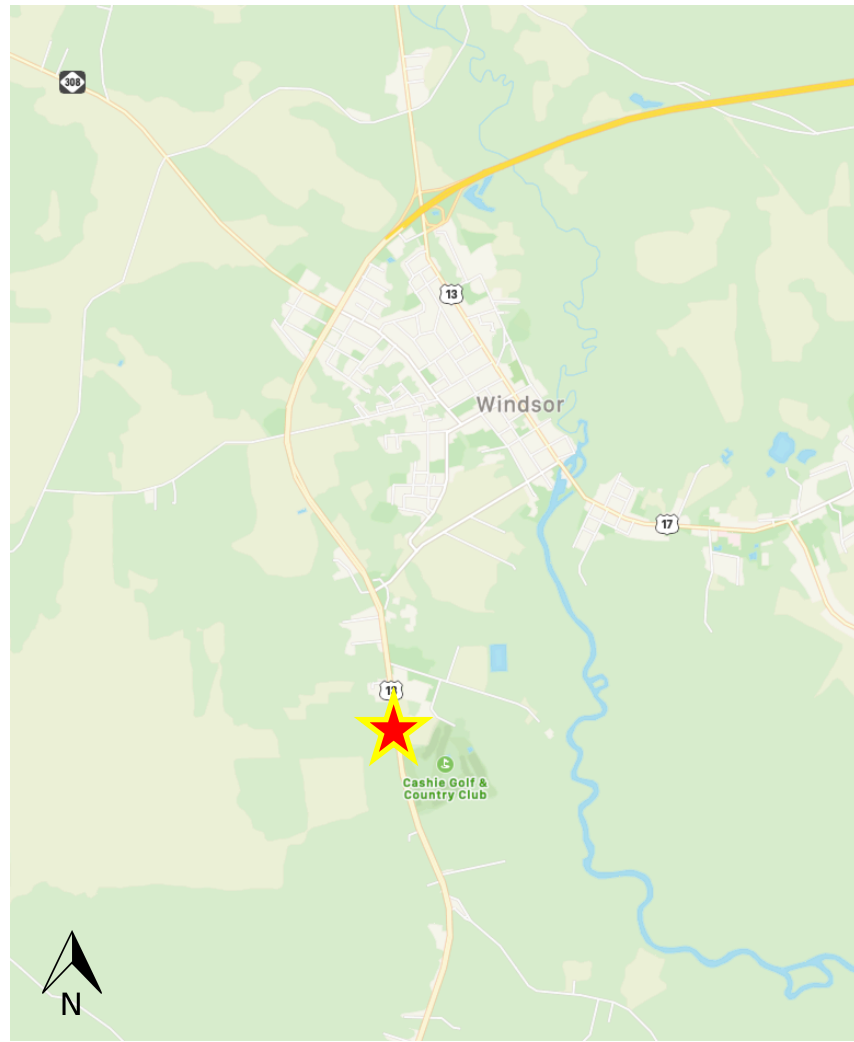
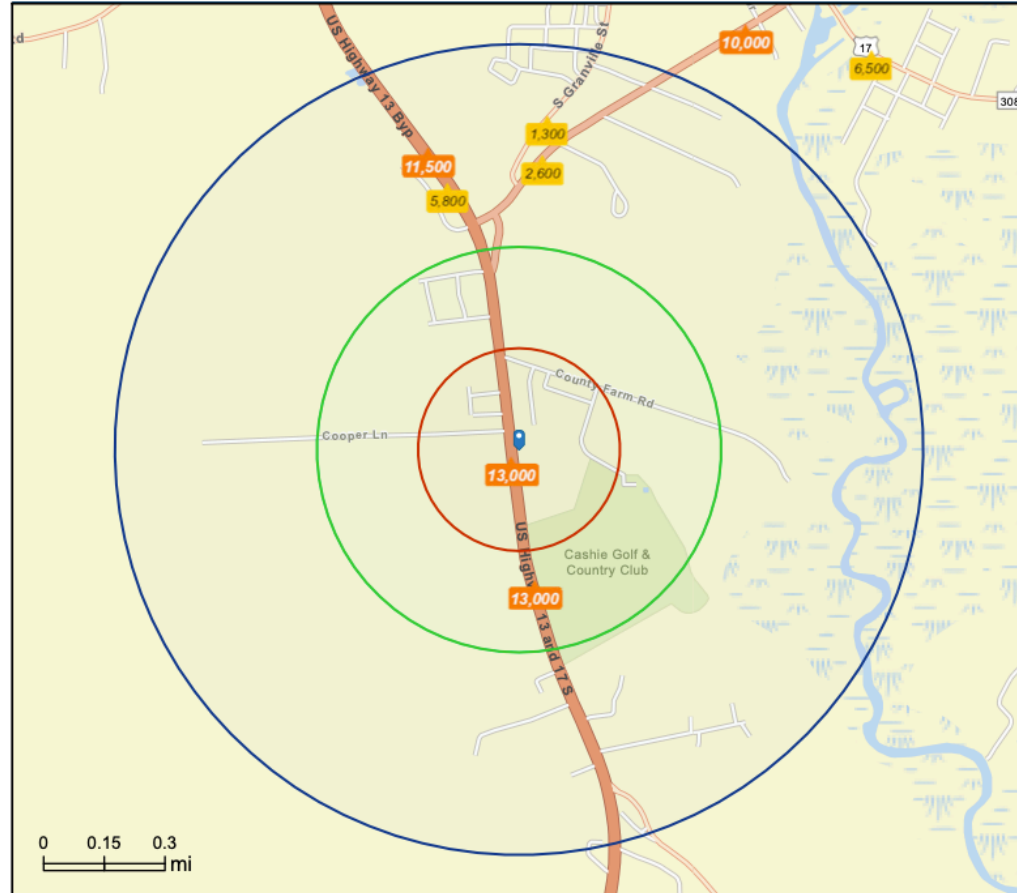
133-205 US 13-17 s.
18.41 +/- Acres Available



Traffic Count Map

Mile 212 US-13 S
Mile 212 US-13 S, Windsor, North Carolina, 27983
Rings: 0.25, 0.5, 1 mile radii

Prepared by Esri
Latitude: 35.97723
Longitude: -76.95594



Mullarkey Real Estate Group, Inc.
708 Cromwell Drive, Suite A
Greenville, NC 27858

Justin A. Mullarkey
Principal Broker, CCIM
(252)-318-2200
Justin@MullarkeyCREG.com

Nathan A. Mazzuca
Broker
(252)-318-2200
Nathan@MullarkeyCREG.com