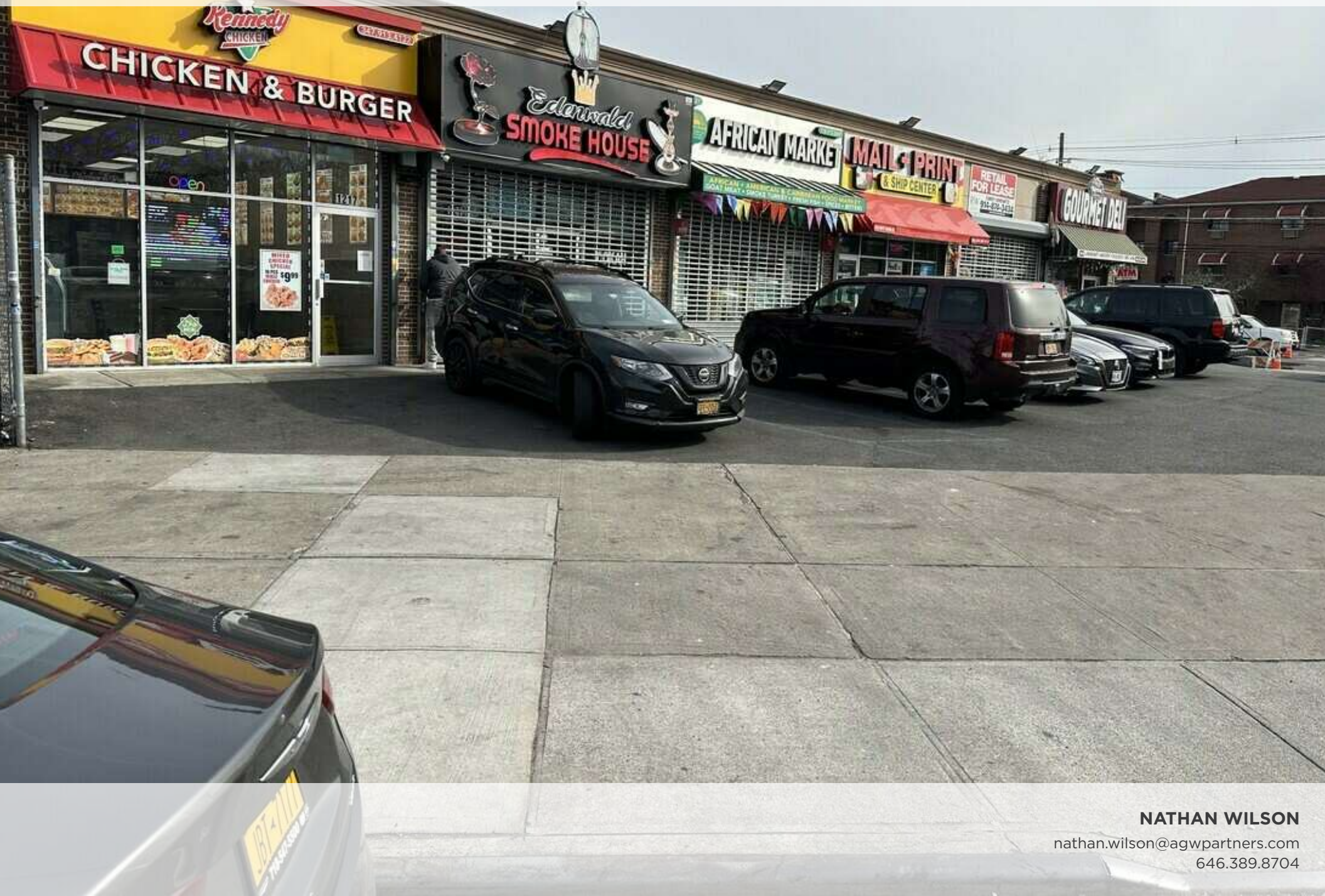


1217 EAST 233RD STREET

BRONX, NY 10466

RW
RW REAL ESTATE GROUP, LLC



NATHAN WILSON

nathan.wilson@agwpartners.com

646.389.8704

DESCRIPTION & HIGHLIGHTS

Brokers Protected

Strip center with space for lease at busy intersection of E 233rd Street and Baychester Avenue in the Bronx with over 18,000 vehicles passing the property per day. A strong mix of local and national nearby retailers include Citgo, Popeyes, Citi Bank, T-Mobile, Carvel, Dunkin', Subway, Kennedy Fried Chicken, and more. Exclusive customer parking available.

Highlights

- + In-line retail space
- + Currently configured as dry goods retail
- + Ideal for multiple retail uses
- + Available now
- + Secure metal roll-up barricade
- + 10 customer parking spaces available
- + >1 mile from 233rd St, Eastchester-Dyre Av, & Baychester Av Train Station
- + Steps from bus lines Bx16 & Bx31

OFFERING SUMMARY

Lease Rate:	Negotiable
Available SF:	1,100 SF
Building Size:	6,498 SF

DEMOGRAPHICS	0.3 MILES	0.5 MILES	1 MILE
Total Households	2,260	8,125	33,661
Total Population	6,566	23,906	95,916
Average HH Income	\$100,619	\$101,500	\$92,610

