

2301 4th Ave East

Shakopee, MN

Key Facts

Property type	Industrial space
---------------	------------------

Building size	242,004 SF
---------------	------------

Space available	242,004 SF
-----------------	------------



Contact Us

Learn more about this property or schedule a tour by reaching out to our local investment and leasing officer.

Alex Olsen

+1 (380) 799-0452

alex.olsen@eqtpartners.com

2301 4th Ave East

Shakopee, MN

Building Specifications

242,004 SF Available

230,541 SF Warehouse

11,463 SF Office

Year Built: 2015

Site Area: 16.5 acres

FAR 0.34

Clear Height: 32'

Dock Doors: 26

Drive-in Doors: 1

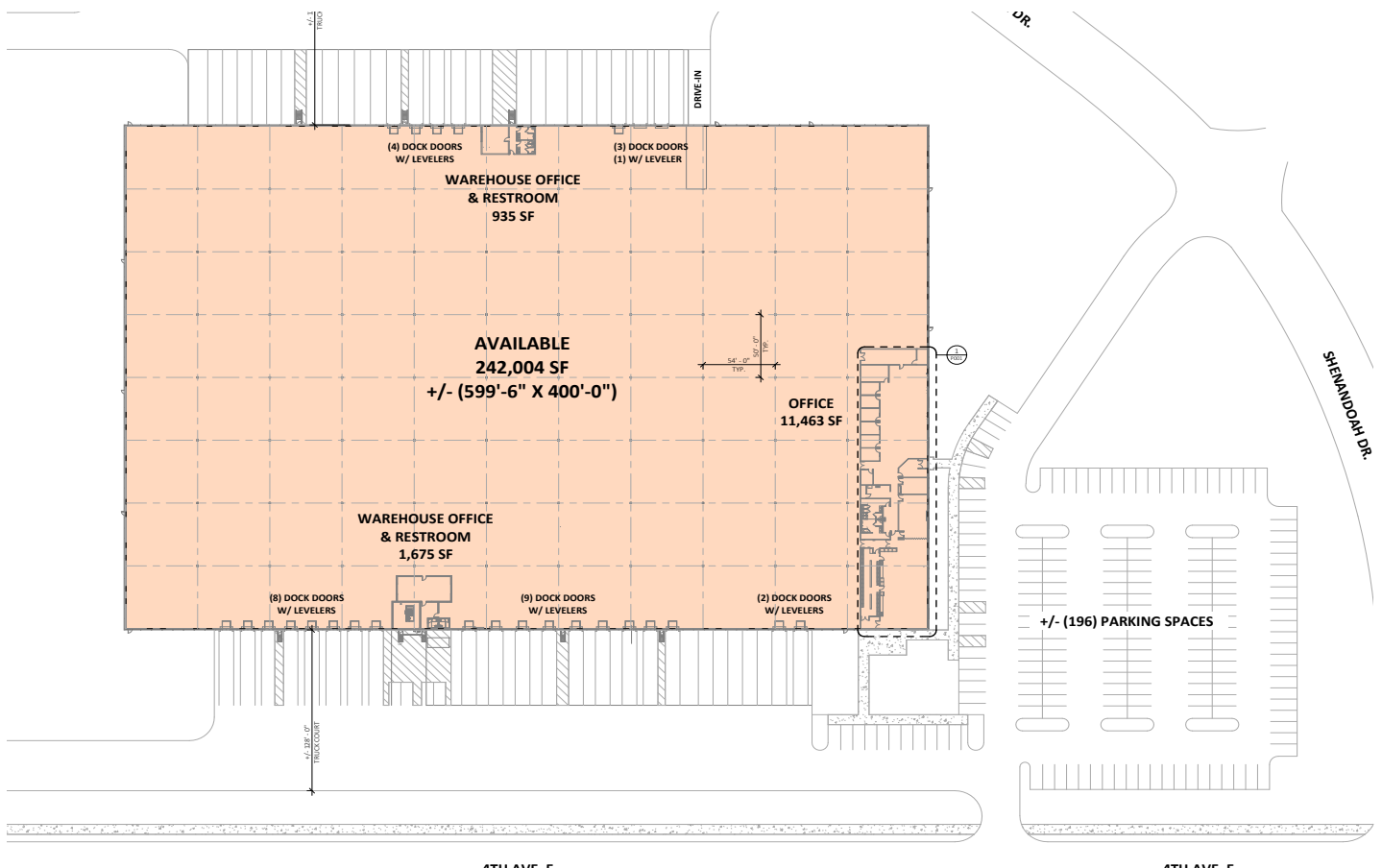
Column Spacing: 50' depth x 54' width

Building Dimensions: 400' depth x 600' length

Loading Configuration Cross Dock

Truck Court Depth: 128'

Car Parking: 196



Contact Us

Learn more about this property or schedule a tour by reaching out to our local investment and leasing officer.

Alex Olsen

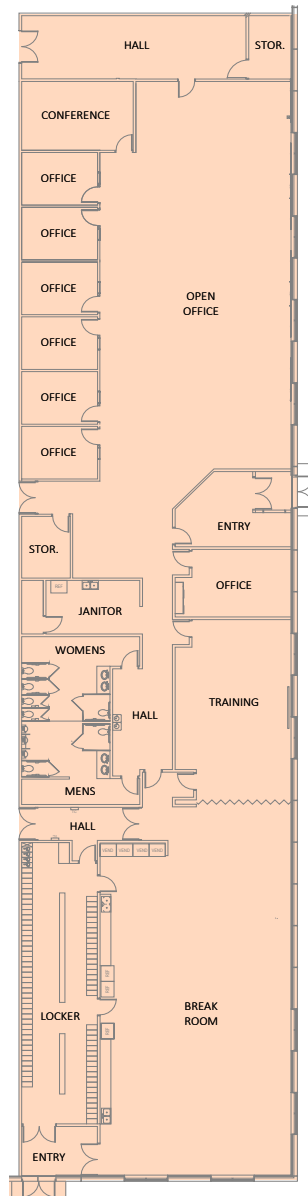
+1 (380) 799-0452

alex.olsen@eqtpartners.com

2301 4th Ave East

Shakopee, MN

OFFICE PLAN - 11,463 SF



Contact Us

Learn more about this property or schedule a tour by reaching out to our local investment and leasing officer.

Alex Olsen

+1 (380) 799-0452

alex.olsen@eqtpartners.com