



FOR SALE

7882 Tara Blvd

7882 Tara Blvd,
Jonesboro, GA 30236

Widespread Commercial, LLC | www.widespreadgroup.com | 1816 Briarwood Industrial Ct, Suite A, Brookhaven, GA 30329 | 404.465.3941



Table of Contents

Confidentiality & Disclaimer

All materials and information received or derived from Widespread Commercial, LLC its directors, officers, agents, advisors, affiliates and/or any third party sources are provided without representation or warranty as to completeness, veracity, or accuracy, condition of the property, compliance or lack of compliance with applicable governmental requirements, developability or suitability, financial performance of the property, projected financial performance of the property for any party's intended use or any and all other matters.

Neither Widespread Commercial, LLC its directors, officers, agents, advisors, or affiliates makes any representation or warranty, express or implied, as to accuracy or completeness of the any materials or information provided, derived, or received. Materials and information from any source, whether written or verbal, that may be furnished for review are not a substitute for a party's active conduct of its own due diligence to determine these and other matters of significance to such party. Widespread Commercial, LLC will not investigate or verify any such matters or conduct due diligence for a party unless otherwise agreed in writing.

EACH PARTY SHALL CONDUCT ITS OWN INDEPENDENT INVESTIGATION AND DUE DILIGENCE.

Any party contemplating or under contract or in escrow for a transaction is urged to verify all information and to conduct their own inspections and investigations including through appropriate third party independent professionals selected by such party. All financial data should be verified by the party including by obtaining and reading applicable documents and reports and consulting appropriate independent professionals. Widespread Commercial, LLC makes no warranties and/or representations regarding the veracity, completeness, or relevance of any financial data or assumptions. Widespread Commercial, LLC does not serve as a financial advisor to any party regarding any proposed transaction. All data and assumptions regarding financial performance, including that used for financial modeling purposes, may differ from actual data or performance. Any estimates of market rents and/or projected rents that may be provided to a party do not necessarily mean that rents can be established at or increased to that level. Parties must evaluate any applicable contractual and governmental limitations as well as market conditions, vacancy factors and other issues in order to determine rents from or for the property.

Legal questions should be discussed by the party with an attorney. Tax questions should be discussed by the party with a certified public accountant or tax attorney. Title questions should be discussed by the party with a title officer or attorney. Questions regarding the condition of the property and whether the property complies with applicable governmental requirements should be discussed by the party with appropriate engineers, architects, contractors, other consultants and governmental agencies. All properties and services are marketed by Widespread Commercial, LLC in compliance with all applicable fair housing and equal opportunity laws.

Danny Glusman

Broker

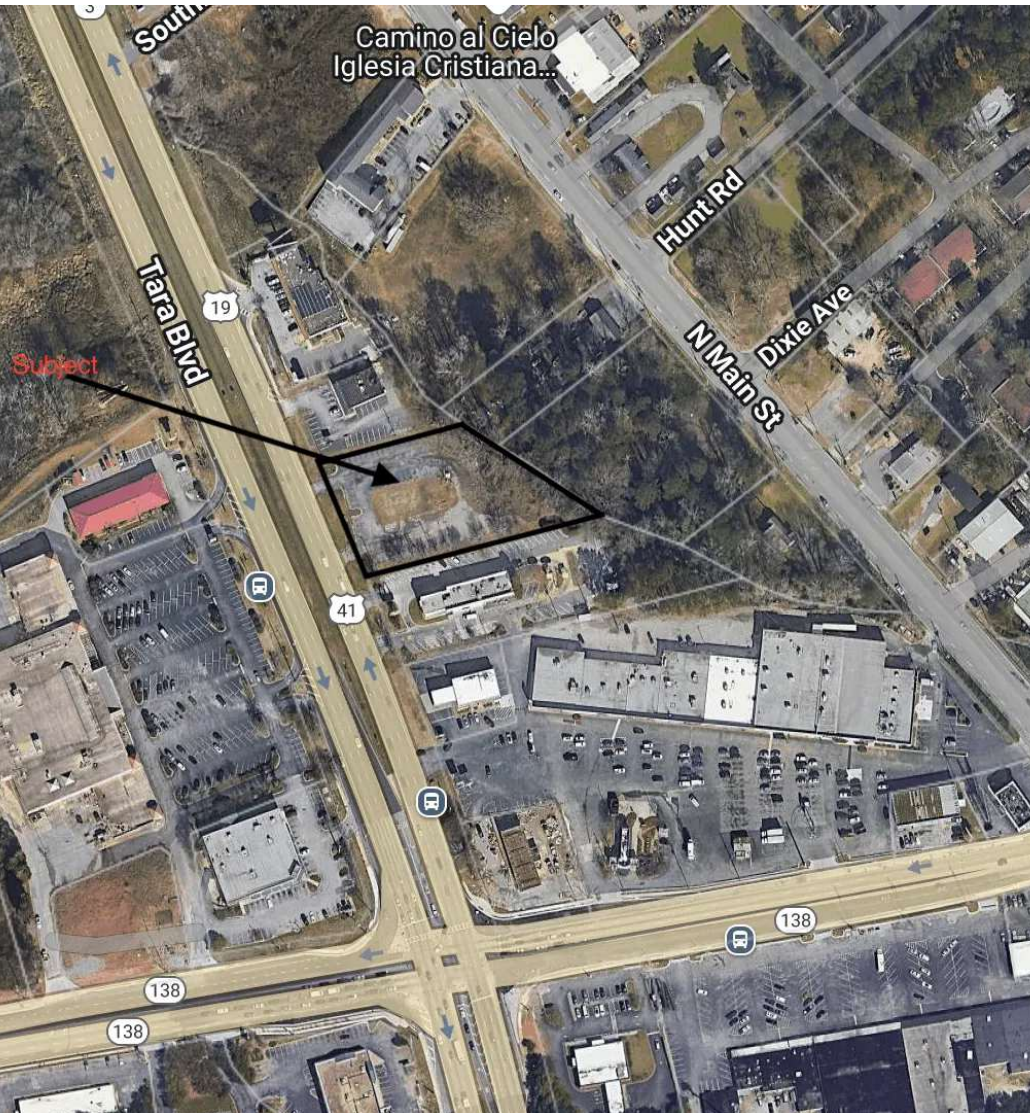
t: 404.465.3345

e: danny@widespreadgroup.com

Table of Contents

PROPERTY DESCRIPTION	3
ADDITIONAL PHOTOS	4
REGIONAL MAP	5
LOCATION MAP	6
AERIAL MAP	7
DEMOGRAPHICS MAP & REPORT	8
ADVISOR BIO 1	9

Property Description



Danny Glusman

Broker

t: 404.465.3345

e: danny@widespreadgroup.com

Widespread Commercial, LLC | www.widespreadgroup.com | 1816 Briarwood Industrial Ct, Suite A, Brookhaven, GA 30329 | 404.465.3941

Property Description

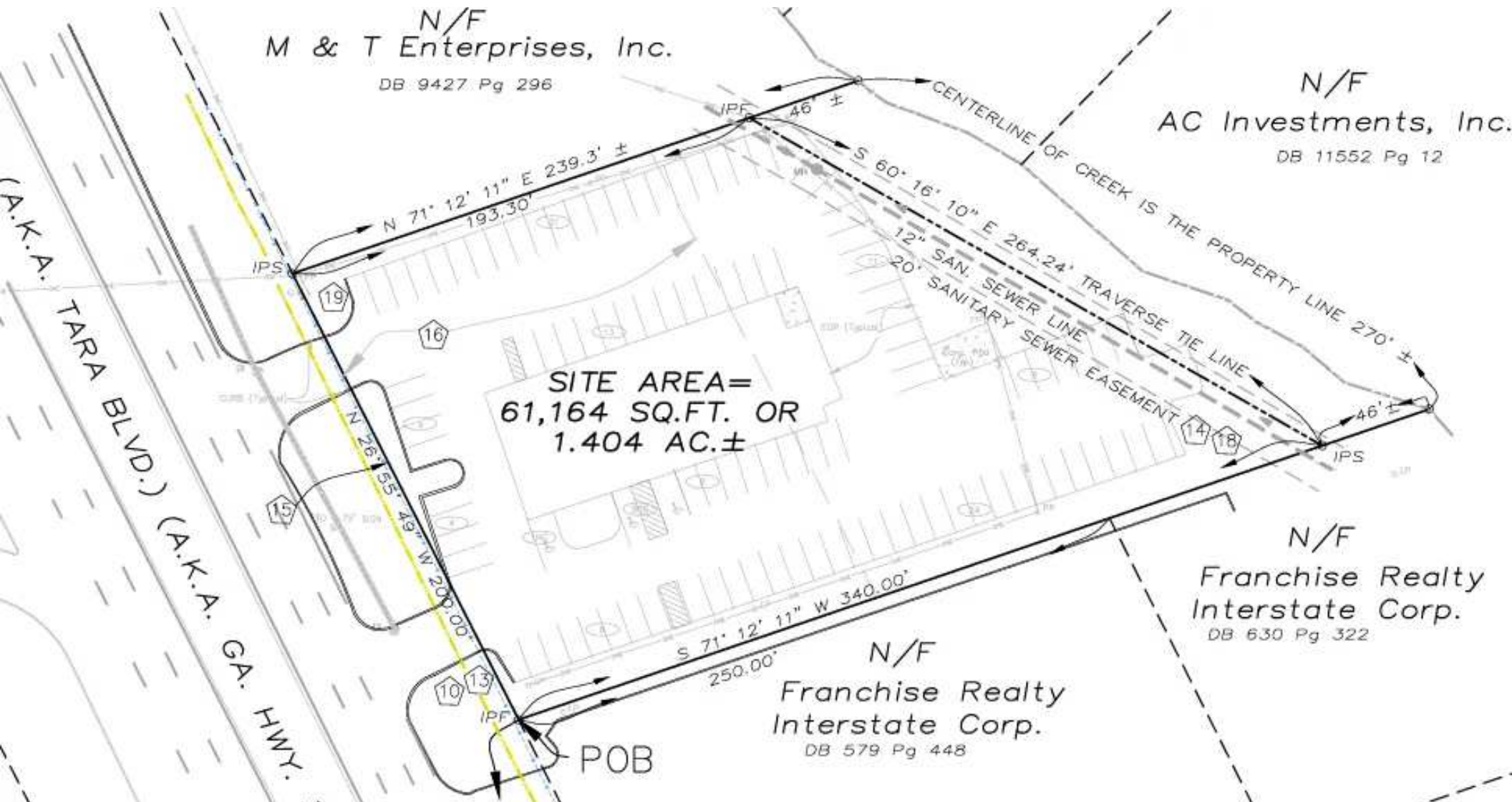
1.4-acre development site in unincorporated Clayton County, zoned MX. Located on Tara Blvd (GA-19/41) just north of GA-138, adjacent to a newly renovated McDonald's. Traffic count is 48,000 VPD. The lot is level, 61,164 SF. Buyers should verify permitted uses with Clayton County.

Location Description

Located adjacent to a newly renovated McDonald's on Tara Blvd just North of Intersection of GA-138.

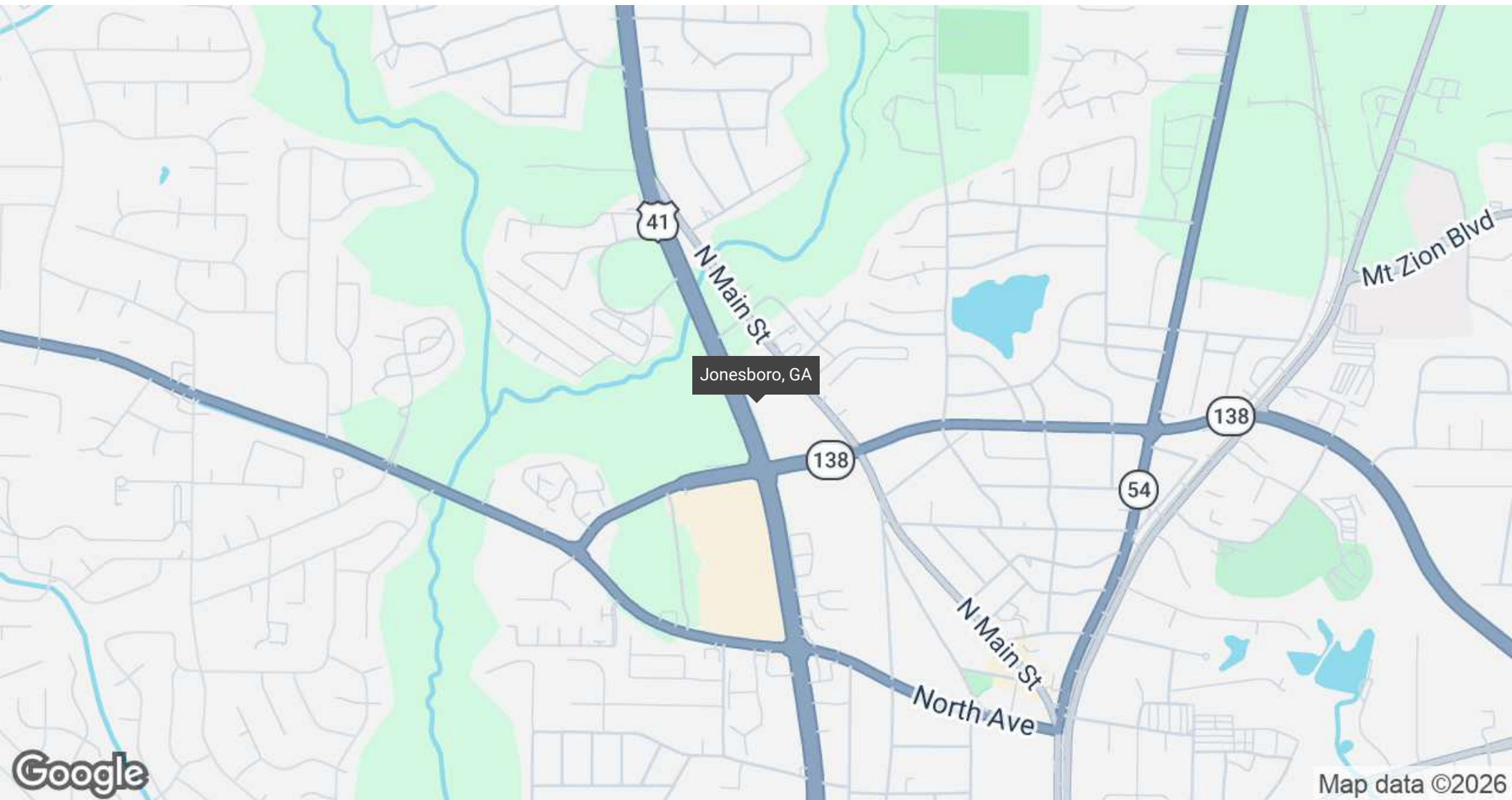


Additional Photos



Danny Glusman
Broker
t: 404.465.3345
e: danny@widespreadgroup.com

Regional Map



Danny Glusman

Broker

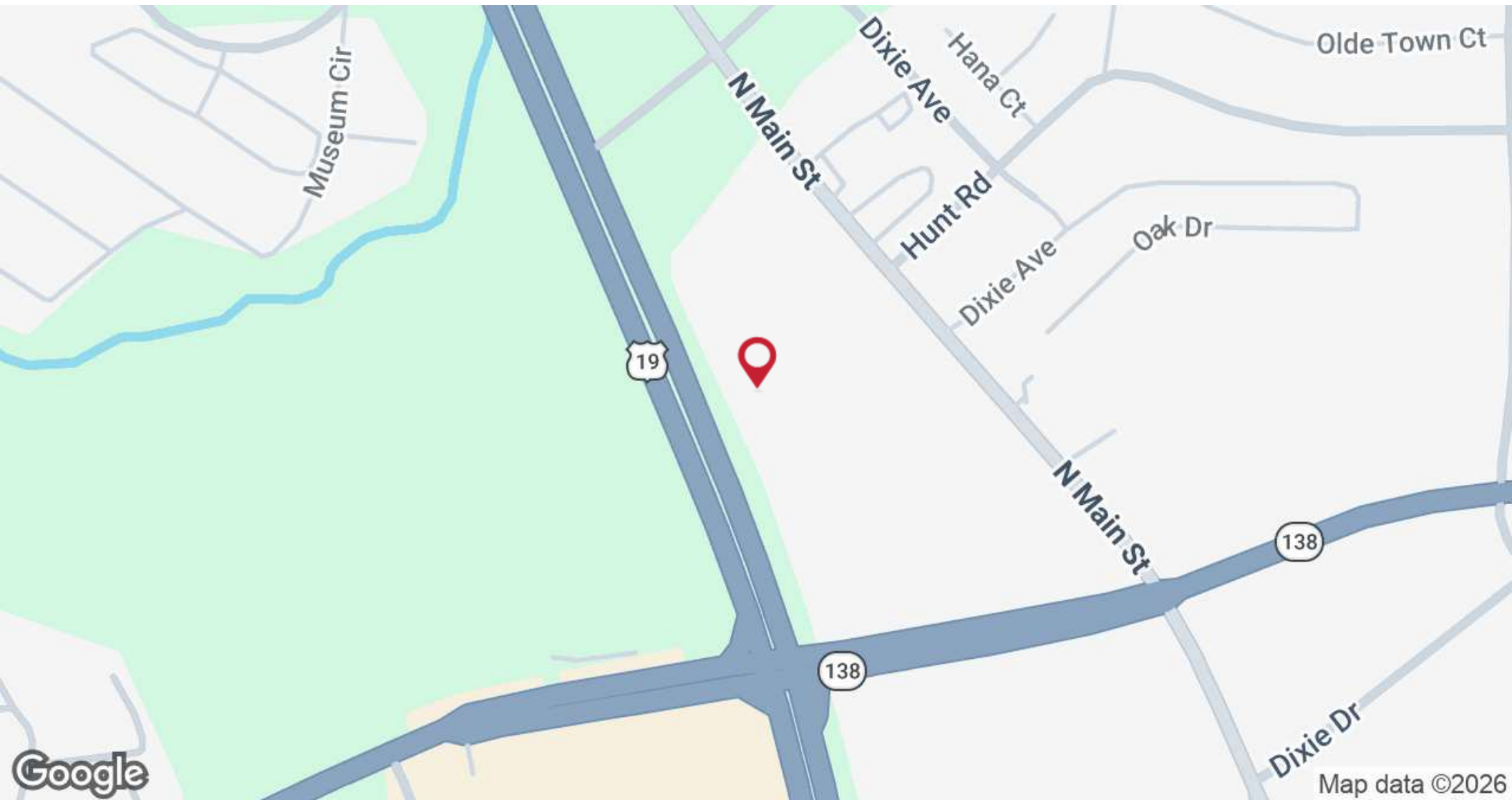
t: 404.465.3345

e: danny@widespreadgroup.com

Widespread Commercial, LLC | www.widespreadgroup.com | 1816 Briarwood Industrial Ct, Suite A, Brookhaven, GA 30329 | 404.465.3941



Location Map



Danny Glusman

Broker

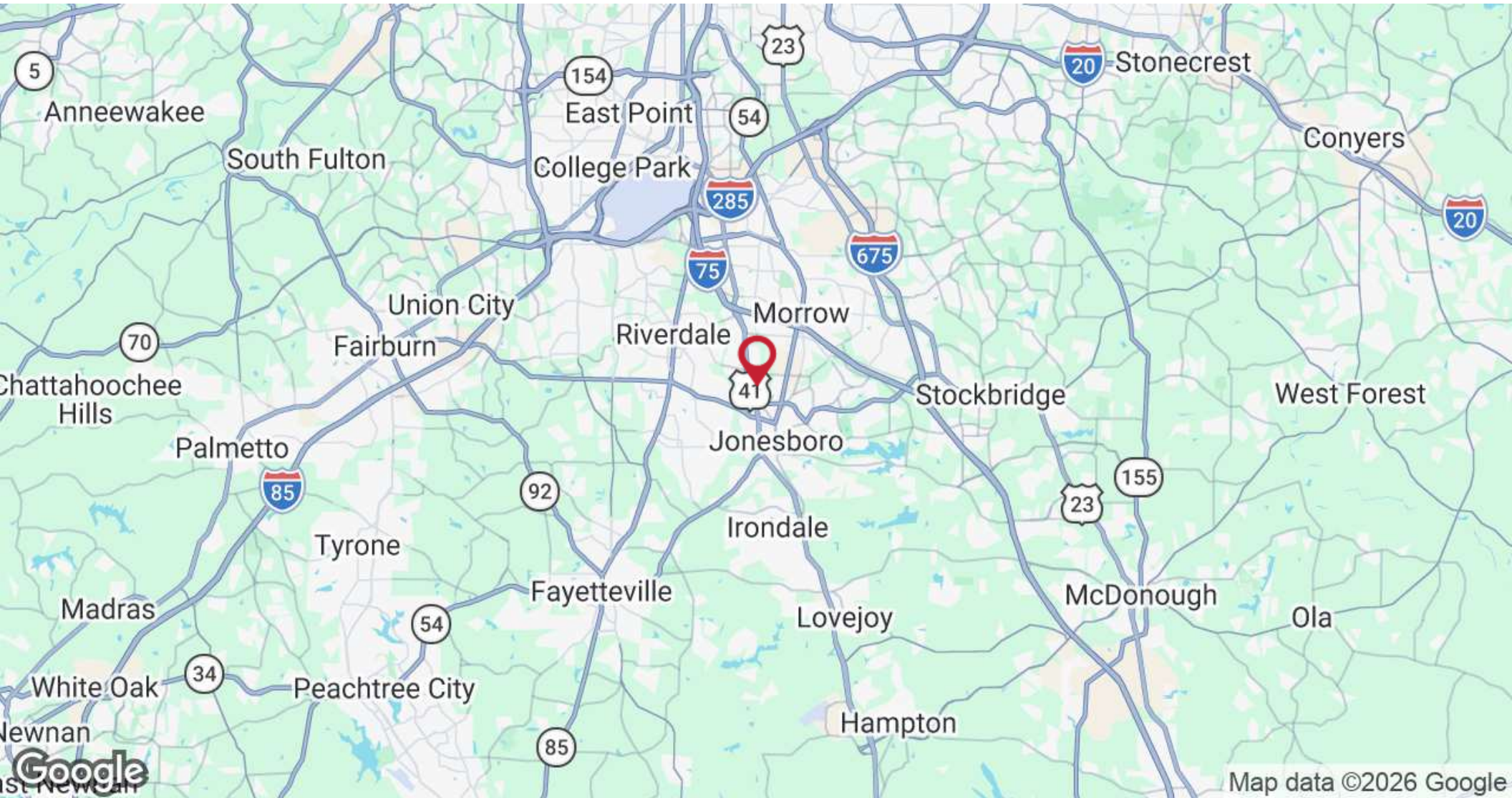
t: 404.465.3345

e: danny@widespreadgroup.com

Widespread Commercial, LLC | www.widespreadgroup.com | 1816 Briarwood Industrial Ct, Suite A, Brookhaven, GA 30329 | 404.465.3941



Aerial Map



Danny Glusman

Broker

t: 404.465.3345

e: danny@widespreadgroup.com

Widespread Commercial, LLC | www.widespreadgroup.com | 1816 Briarwood Industrial Ct, Suite A, Brookhaven, GA 30329 | 404.465.3941

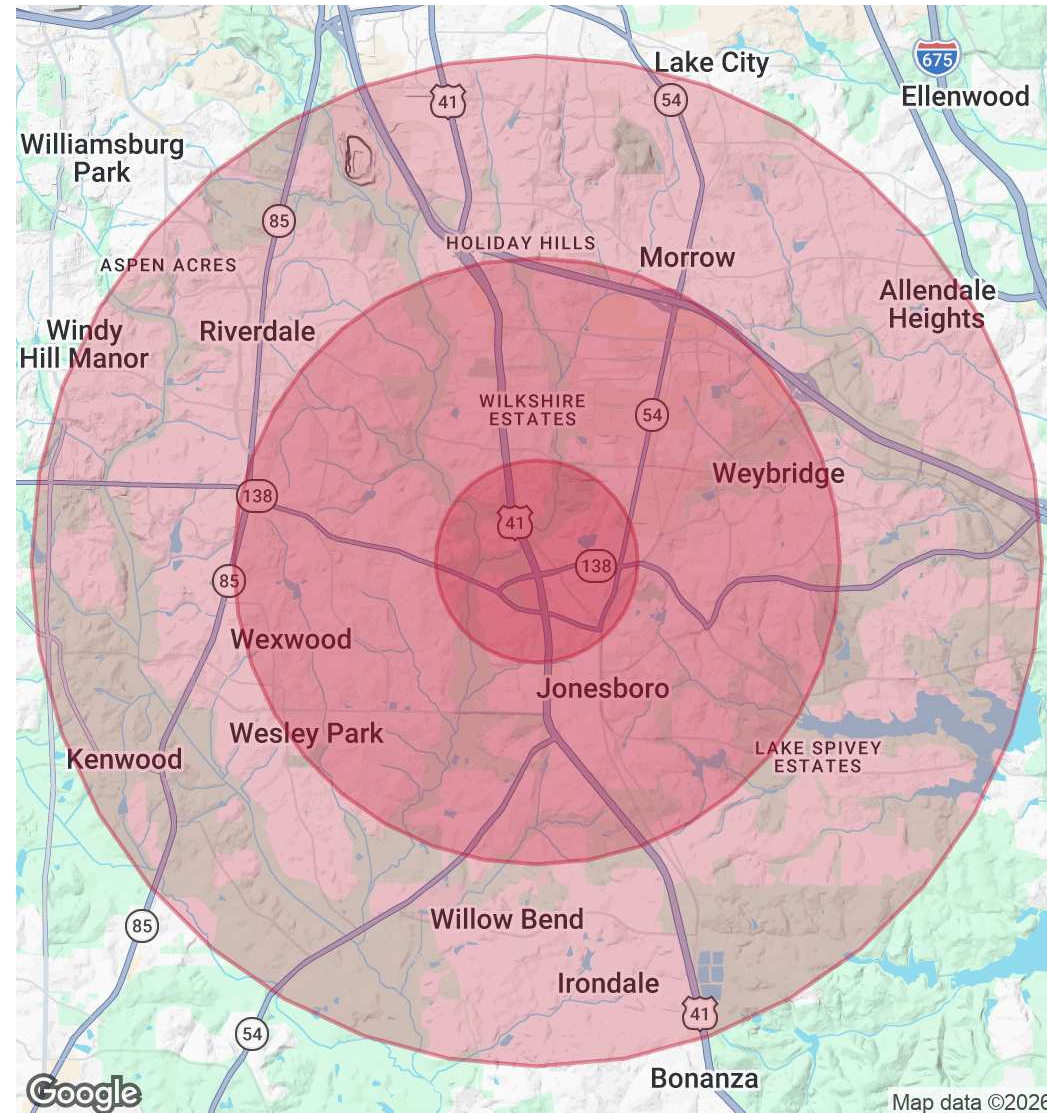


Demographics Map & Report

POPULATION	1 MILE	3 MILES	5 MILES
Total Population	10,072	77,241	186,483
Average Age	36	36	37
Average Age (Male)	34	35	36
Average Age (Female)	37	38	39

HOUSEHOLDS & INCOME	1 MILE	3 MILES	5 MILES
Total Households	3,831	27,909	67,250
# of Persons per HH	2.6	2.8	2.8
Average HH Income	\$55,099	\$69,458	\$72,660
Average House Value	\$208,911	\$235,206	\$230,613

2020 American Community Survey (ACS)



Danny Glusman

Broker

t: 404.465.3345

e: danny@widespreadgroup.com

Advisor Bio 1



Danny Glusman

Broker

danny@widespreadgroup.com

Direct: 404.465.3345 | Cell: 404.822.9193

GA #361412 // SC #144127

Professional Background

Danny Glusman has spent over 25 years in commercial real estate — as a broker, investor, and principal in a development firm. That background shapes how he approaches every assignment: with an owner's perspective on value, timing, and execution.

He focuses on investment sales, land, retail, and development opportunities in Atlanta and surrounding markets. His marketing is locally driven — he works closely with agents regionally and statewide to make sure every listing reaches the right buyers, not just the widest audience.

His goal on every deal is straightforward: get the highest price, in the least amount of time, with the fewest surprises.

Education

BBA Georgia State University - Marketing

Memberships

Widespread Commercial, LLC
1816 Briarwood Industrial Ct Suite A
Brookhaven, GA 30329
404.465.3941

Danny Glusman

Broker

t: 404.465.3345

e: danny@widespreadgroup.com

Widespread Commercial, LLC | www.widespreadgroup.com | 1816 Briarwood Industrial Ct, Suite A, Brookhaven, GA 30329 | 404.465.3941

