

604 COURTLAND ST.

■ BUILDING SIGNAGE AVAILABLE



PROPERTY INFORMATION

604 Courtland is a 3-story office building with excellent access and visibility from I-4. There are numerous restaurants, retail, and amenities nearby.

- 72,214 SF Building
- Building signage available with I-4 exposure
- Easy access to I-4, minutes to Downtown Orlando, Winter Park, and Maitland Center
- Ample Parking - 4/1,000 Ratio

SUITE	RSF
121	945
150	2,410
180	4,229
250	9,166 - 15,761
275	6,595 - 15,761
300	2,639



I-4 SIGNAGE AVAILABLE

604 COURTLAND ST.



172,000 VEHICLES PER DAY



AMENITIES

FOOD & DRINK

- 1. Christner’s Prime Steak & Lobster
- 2. Starbucks
- 3. Denny’s
- 4. Blaze Pizza
- 5. Miller’s Ale House
- 6. Fleming’s Prime Steakhouse
- 7. Light on the Sugar Bakery Cafe
- 8. The Acre
- 9. Tornatore’s
- 10. LaSpada’s Original Cheesesteaks
- 11. La Campana Mexican Restaurant
- 12. 4 Rivers Original Smokehouse
- 13. Mooyah Burgers
- 14. Hunger Street Tacos
- 15. Hillstone
- 16. Bar Italia
- 17. The Hangry Bison
- 18. Crumbl Cookies
- 19. Mediterranean Deli
- 20. Tap Room at Dubsdread
- 21. Quesa Loco
- 22. Jeff’s Bagels
- 23. Oh Hey Cafe

HOTELS

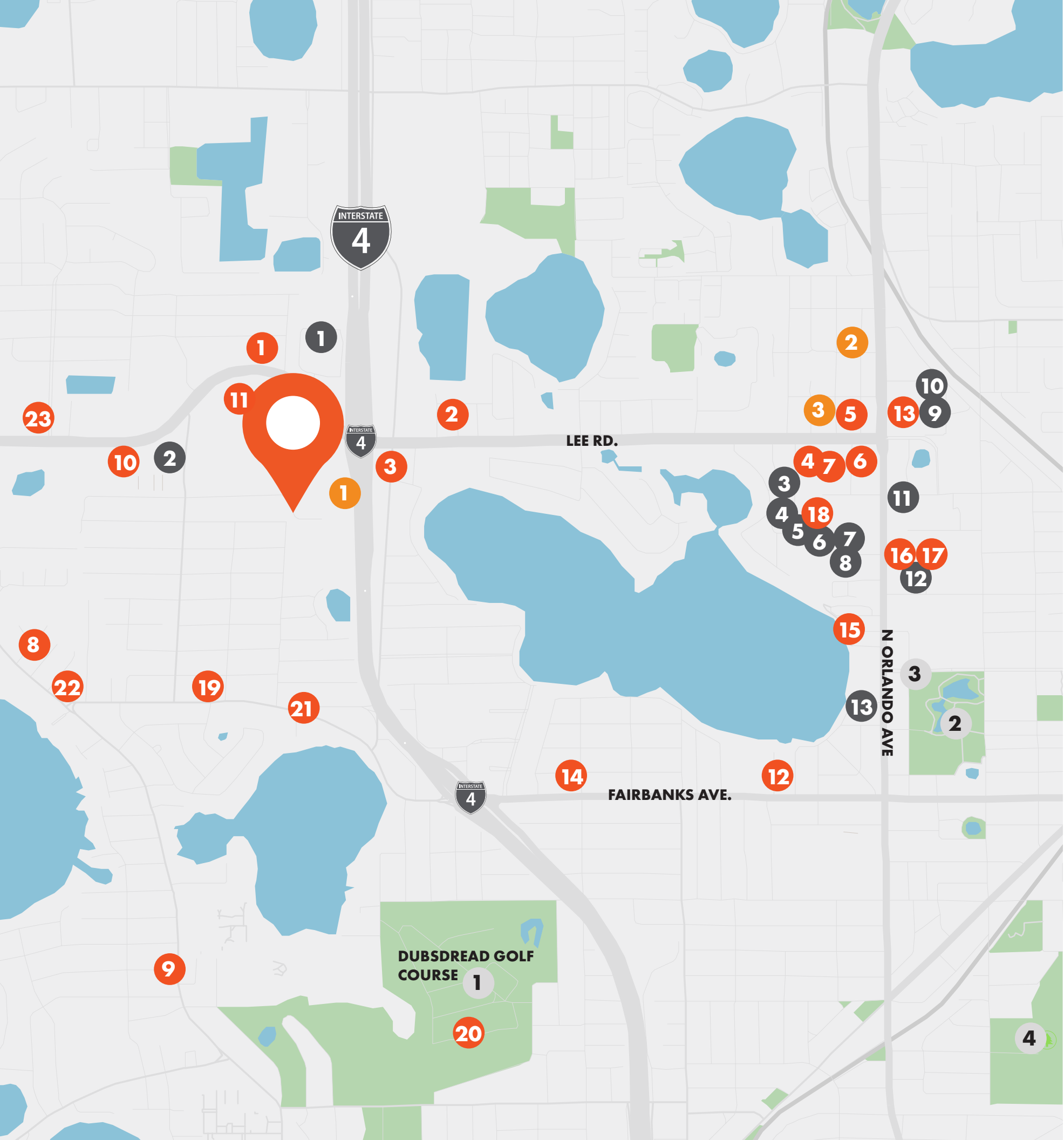
- 1. Countryside Inn & Suites
- 2. SpringHill Suites by Marriott
- 3. Hilton Garden Inn

RETAIL

- 1. The Home Depot
- 2. Walmart Neighborhood Market
- 3. LA Fitness
- 4. Five Below
- 5. Marshall’s
- 6. Home Goods
- 7. Office Depot
- 8. Michael’s
- 9. Whole Foods
- 10. Nordstrom Rack
- 11. Chase Bank
- 12. Publix
- 13. Trader Joe’s

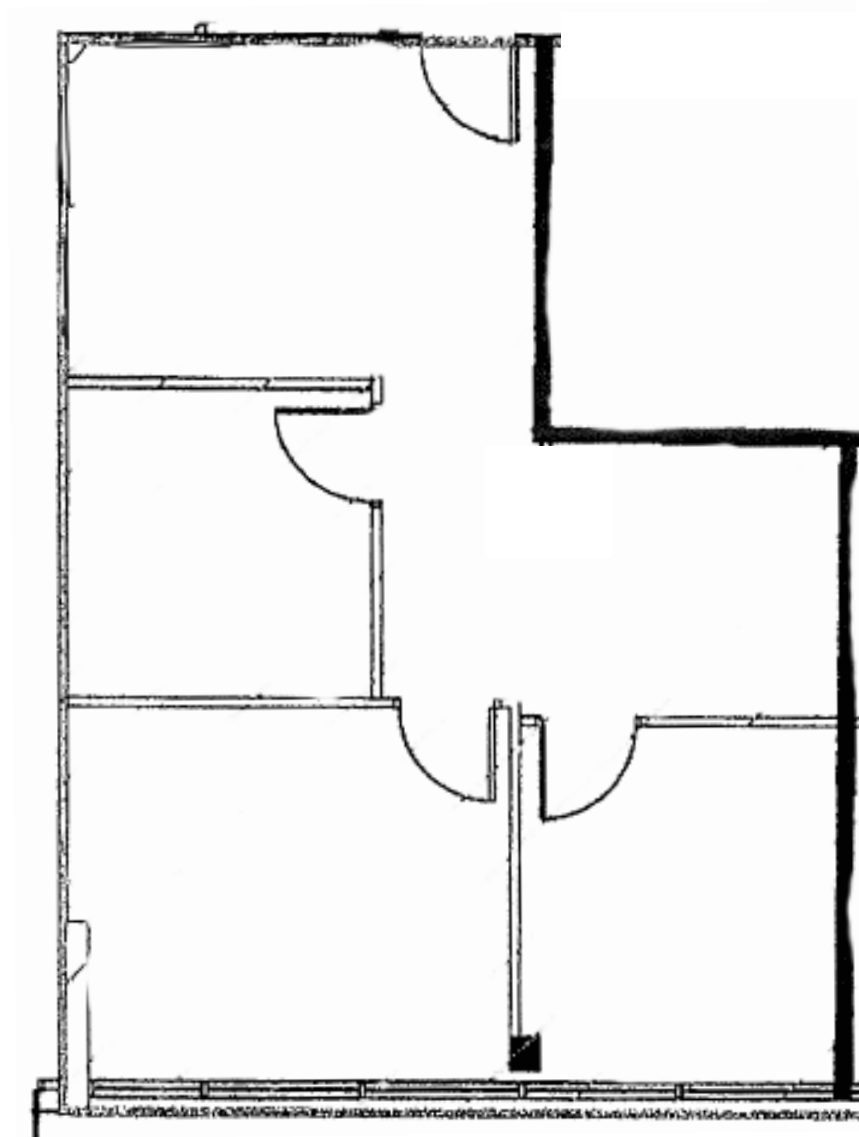
PLACES

- 1. Dubsdread Golf Course
- 2. Martin Luther King Jr. Park
- 3. Winter Park Public Library
- 4. Mead Botanical Garden

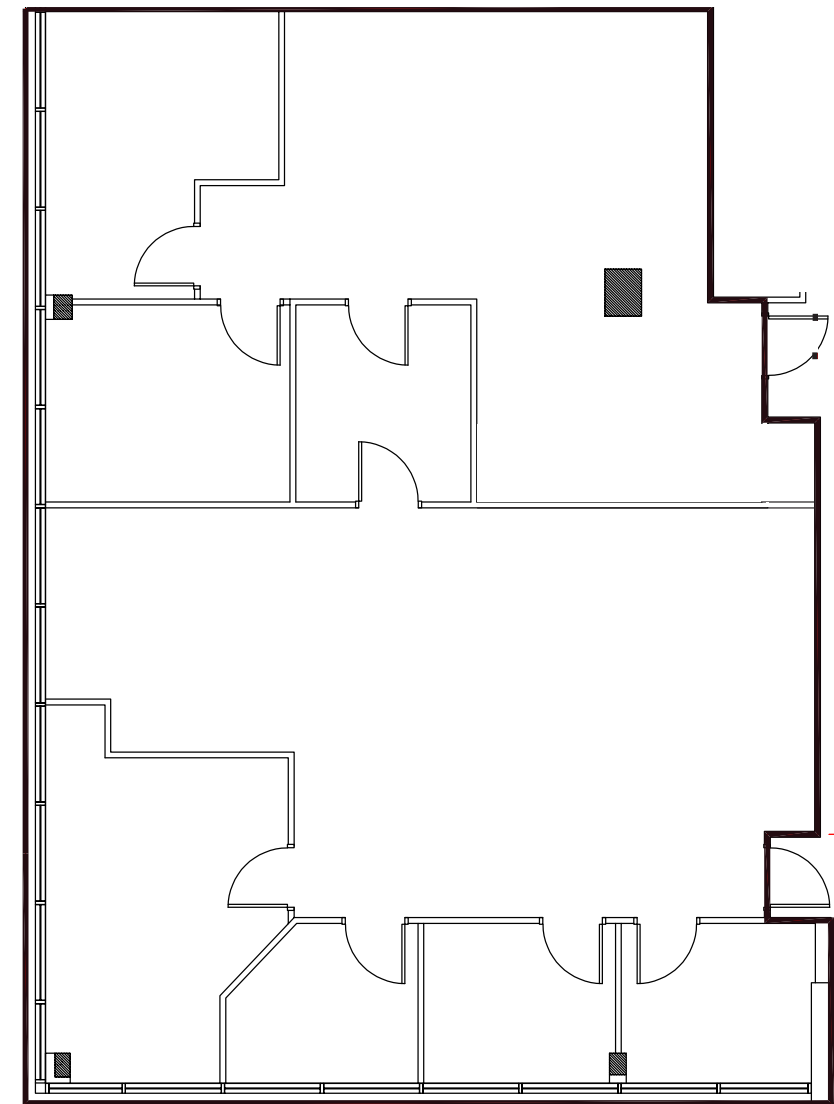


FLOOR PLANS

SUITE 121
945 SF AVAILABLE

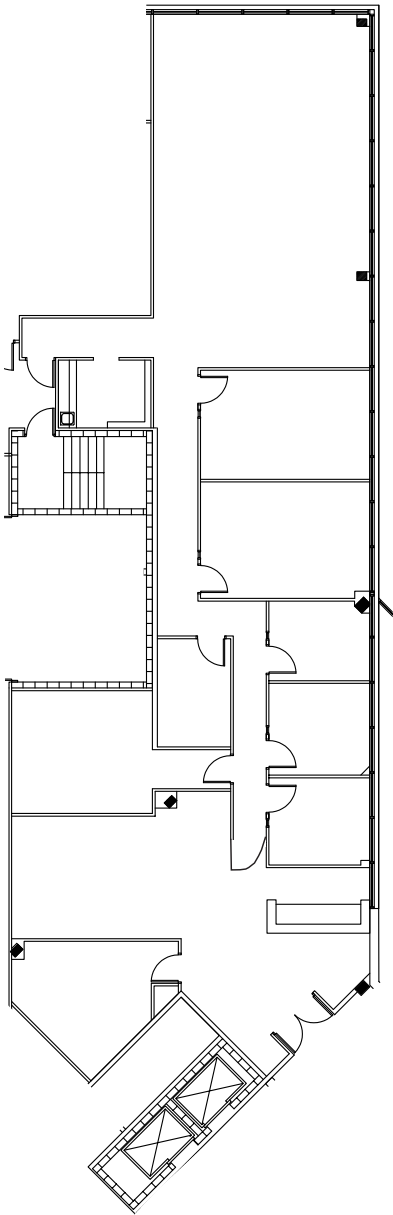


SUITE 150
2,410 SF AVAILABLE

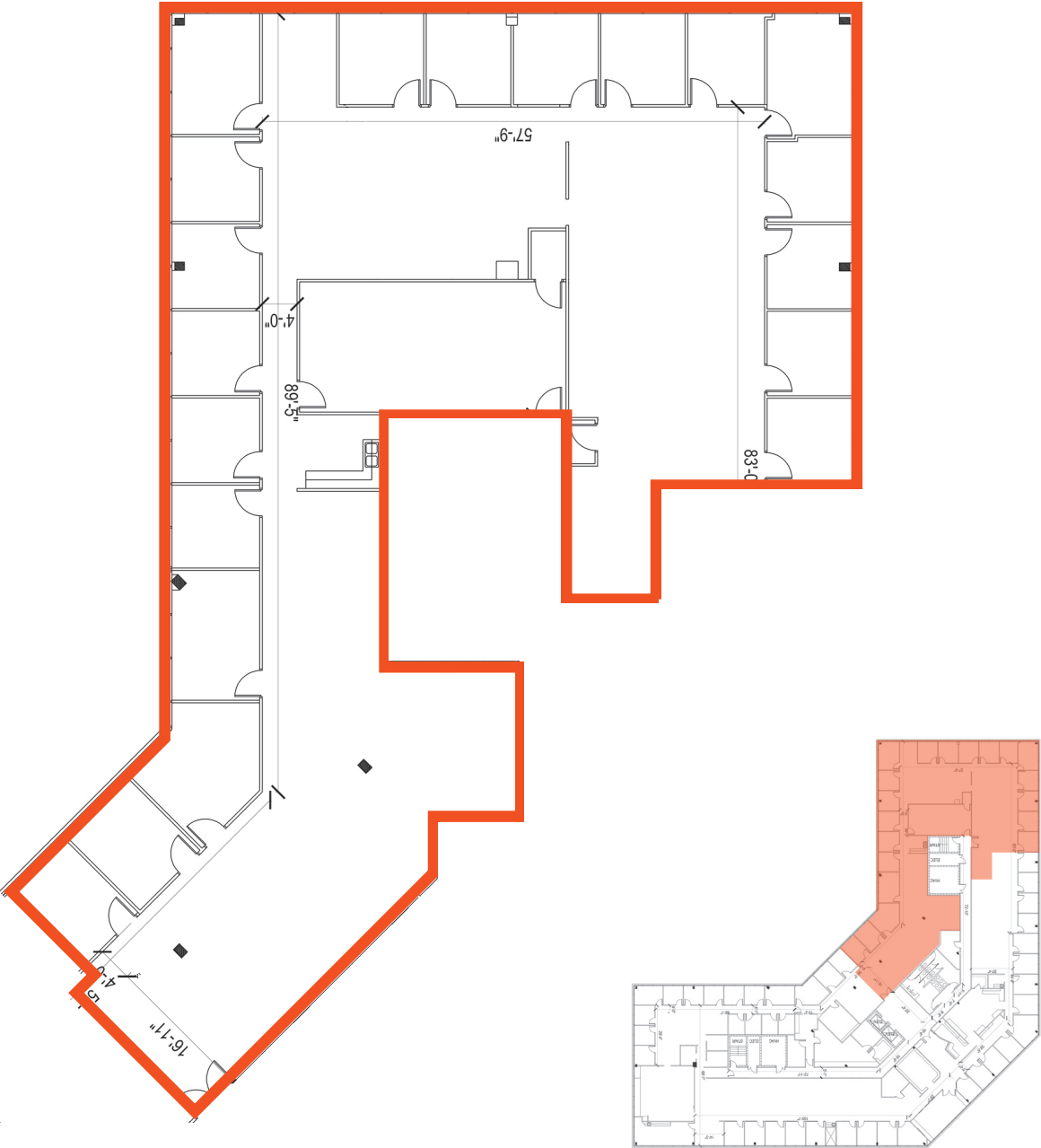


FLOOR PLANS

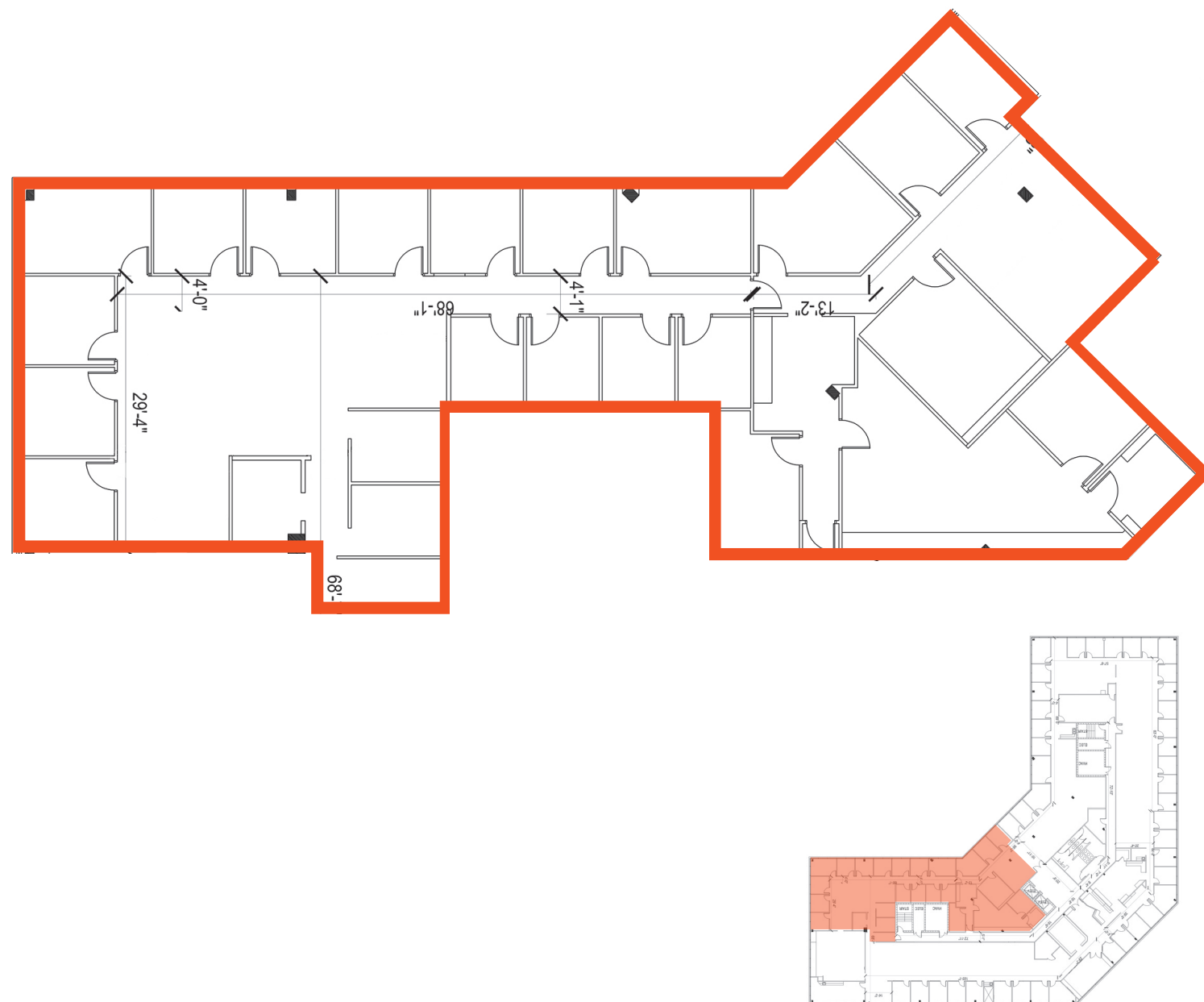
SUITE 180
4,229 SF AVAILABLE



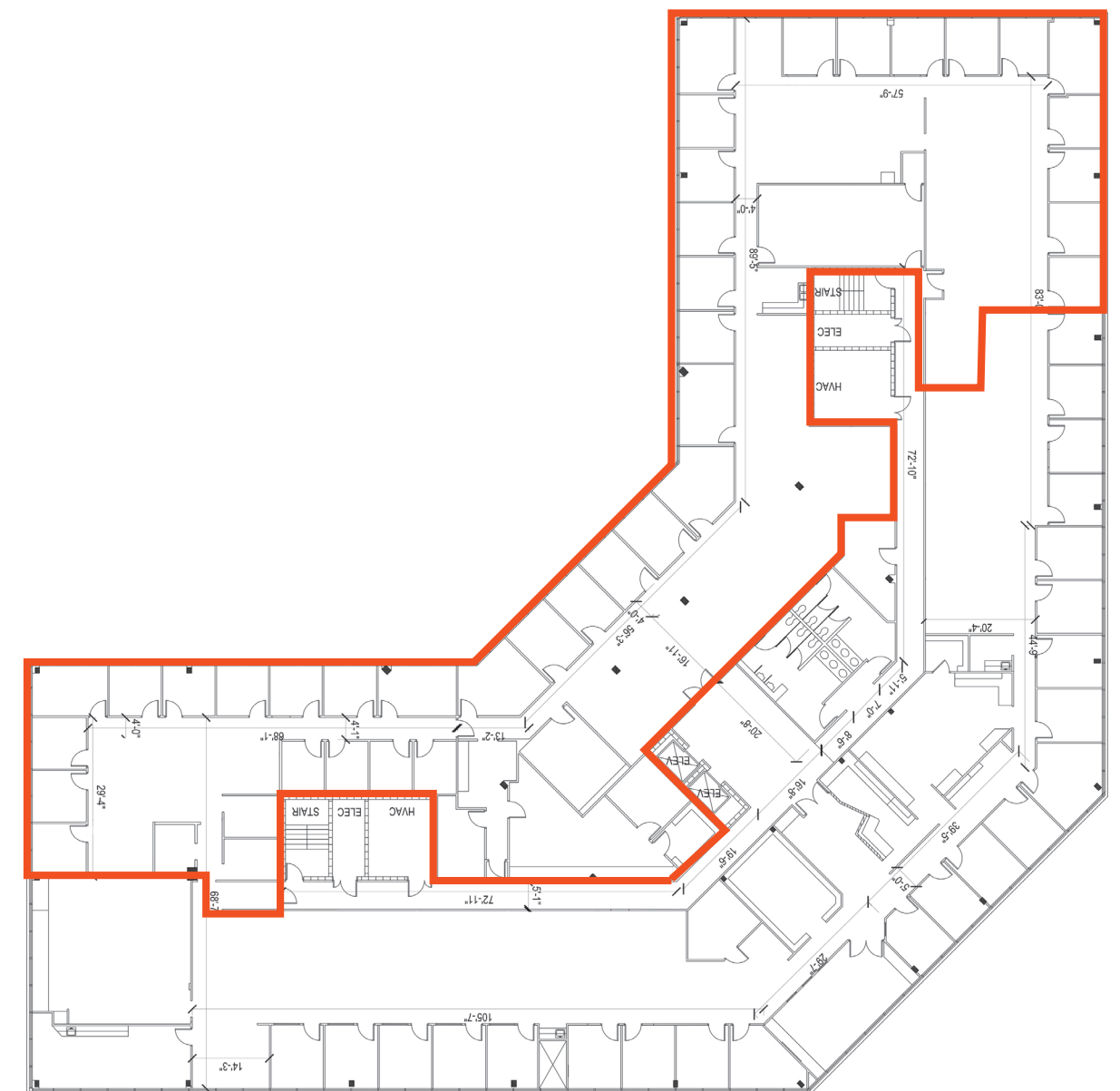
SUITE 250
9,166 - 15,761 SF AVAILABLE
*can be combined with Suite 275



* can be combined with Suite 250

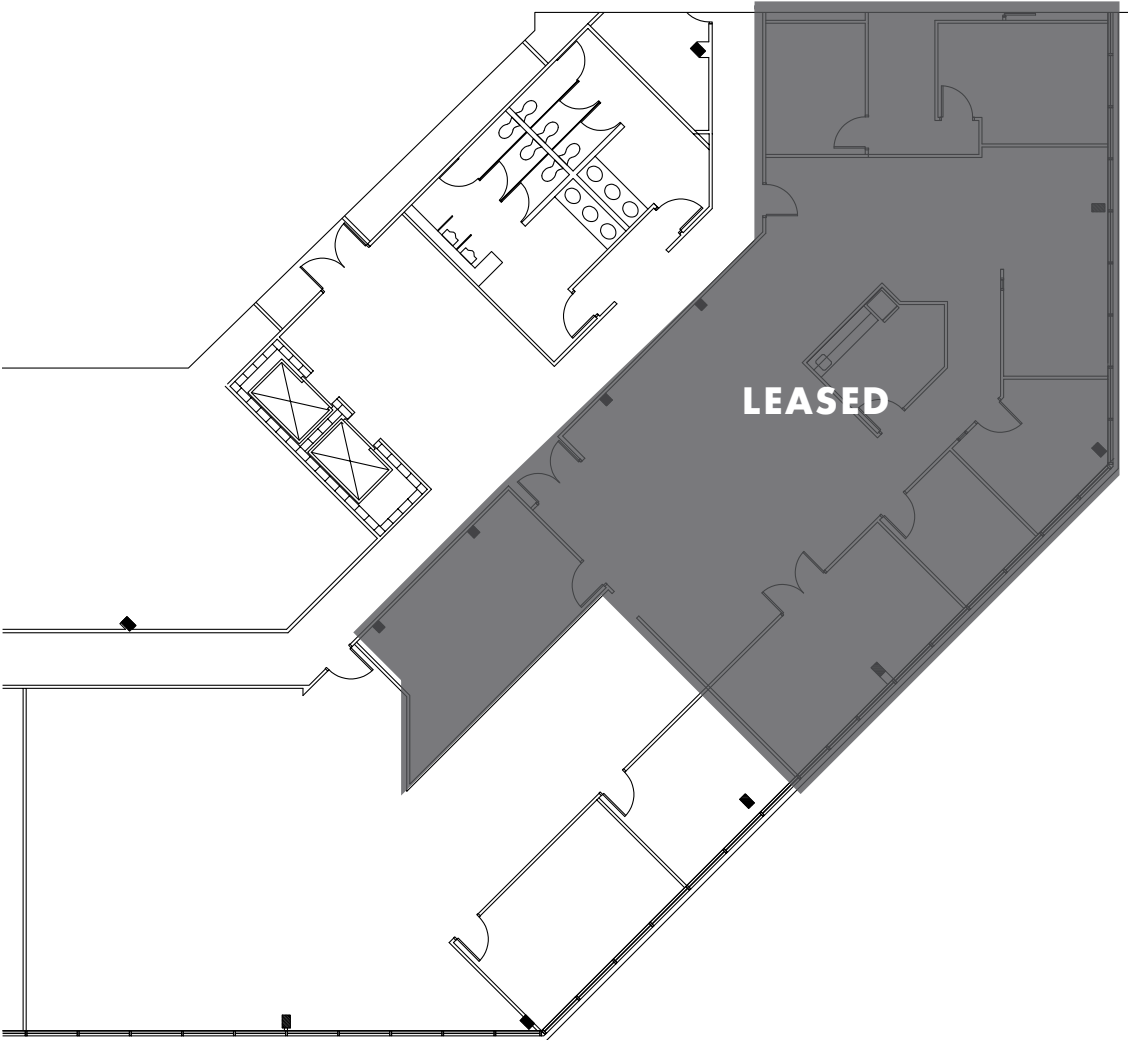


15,761 SF AVAILABLE



FLOOR PLANS

SUITE 300
2,639 SF AVAILABLE



PHOTOS





FOR MORE INFORMATION:

KEVIN WILL

Vice President

407.458.5888

kevin.will@foundrycommercial.com

NICK HEEB

Senior Associate

772.631.1258

nick.heeb@foundrycommercial.com

FOUNDRY
COMMERCIAL