

PROPERTY FOR LEASE

41 Corporate Park, Irvine, CA 92606

41
CP



NEWMARK

Professionally Managed by



KING'S ARCH

forty-one
corporate park

forty-one corporate park

Office for Lease / Building Details

41 Corporate Park is a premier office project within the master planned Corporate Park that recently underwent renovations and features a three-story office building located in the heart of Irvine. The project is situated next to the popular Irvine Business Complex and The District at Tustin Legacy, and within walking distance to an abundance of retail amenities. 41 Corporate Park offers ample surface and covered parking, proactive management, and immediate access to the San Diego (I-405), Santa Ana (I-5), 261, and 55 Freeways.

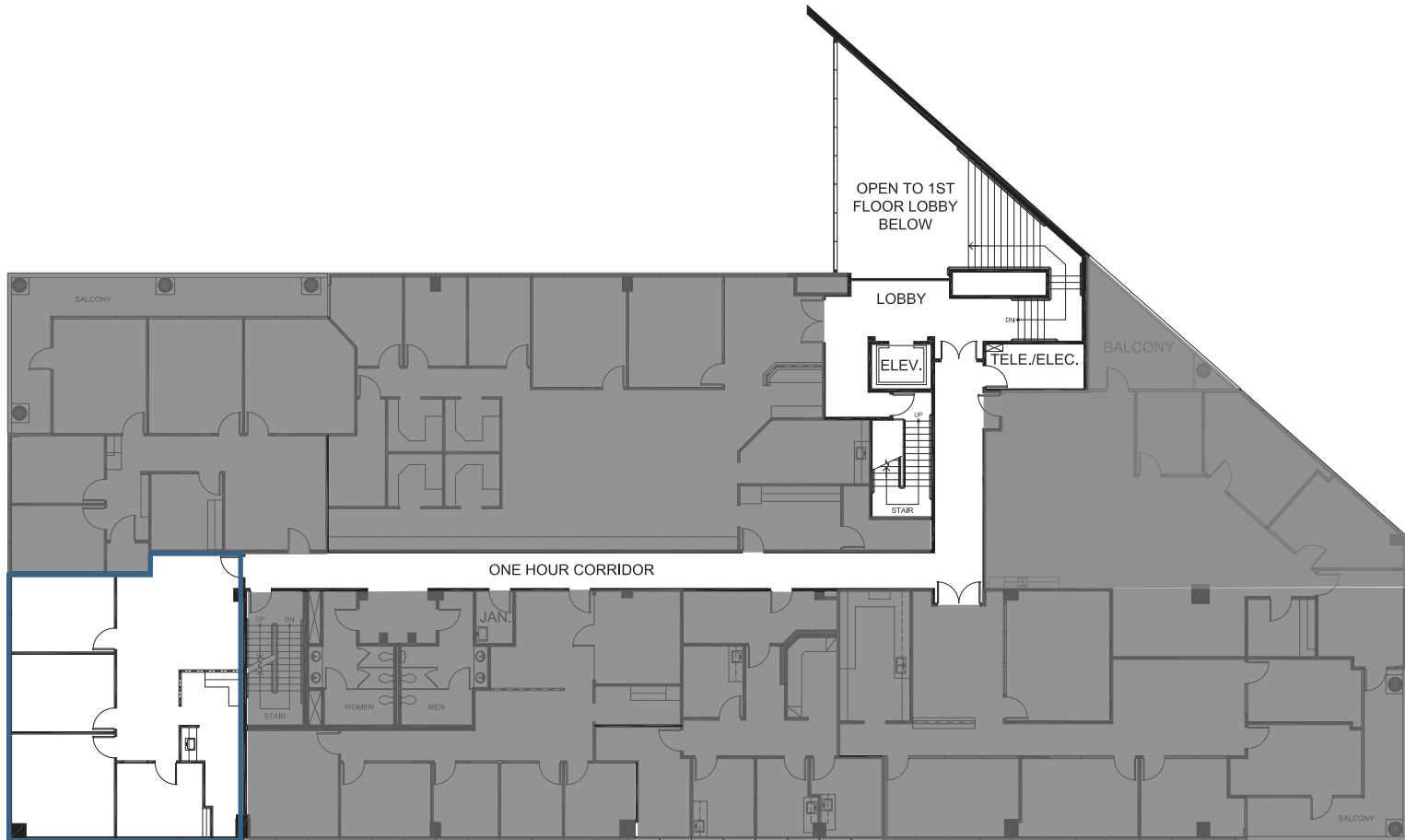


Suite	RSF	Available	Notes
240	1,540 SF	Mar 1, 2026	3 offices, conference room, kitchen and reception area

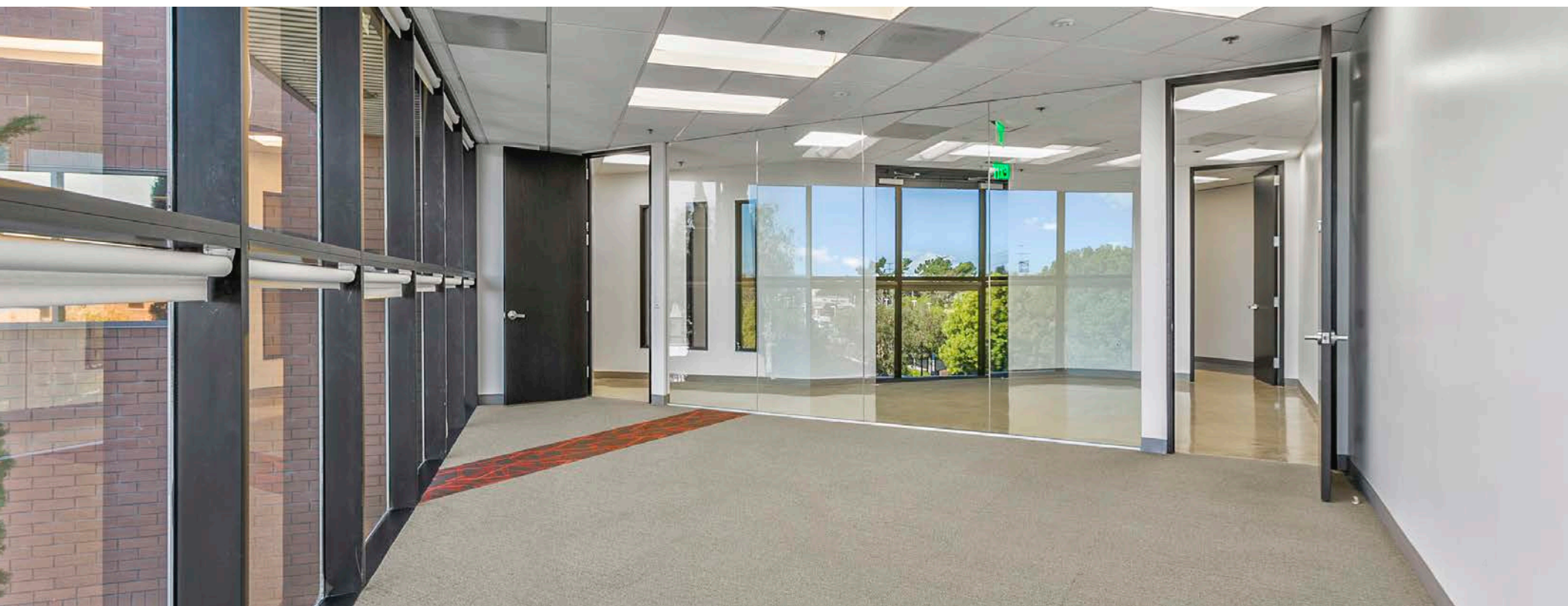
41
CP

Second Floor

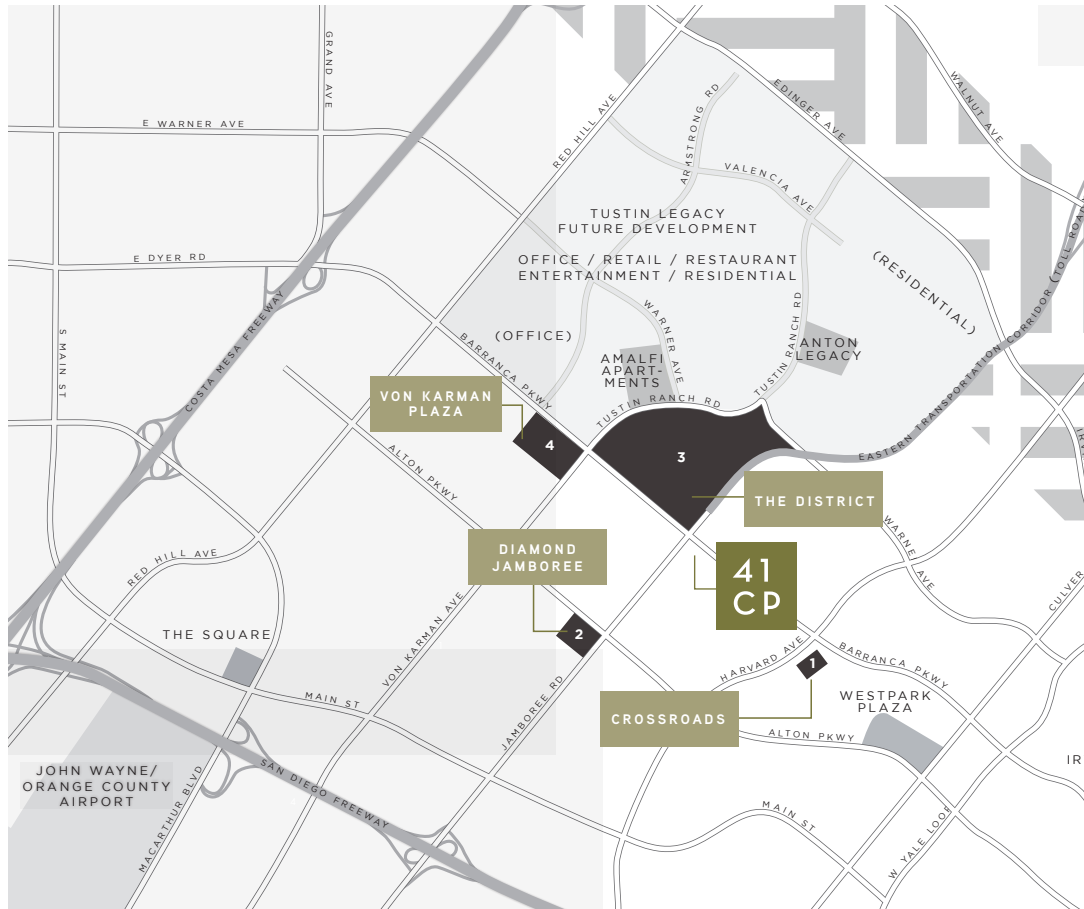
Floor Plan



Suite 240
1,540 SF



Amenities Map



forty-one
corporate park

Retail Centers

1. Crossroads

Target
California Fish Grill
Capital Noodle Bar
CAVA
Chase Bank
Chipotle Mexican Grill
Citibank
Creamistry
DonerG Turkish & Mediterranean Grill
The Flame Broiler
Ha Long Vietnamese Cuisine
Inchin's Bamboo Garden
J San Ramen
Mega Bank
Panera Bread
Paradise Bowls
Paris Baguette
Peet's Coffee
Piadina
Pizza Hut
Sagami Japanese Restaurant
Stonefire grill
Tastea
Urban Plates
Wingstop

2. Diamond Jamboree

85C Bakery Café
Afters Ice Cream
Ajisen Ramen
BBQ Chicken
BCD Tofu House
Dun Huang
Curry House CoCo Ichibanya
HaiDiLao Chinese Hot Pot
The Kickin' Crab
Kona Loa Coffee
Kura Revolving Sushi Bar
Sunright Tea Studio
Meet Fresh

Paper Lantern Dumpling House
Pepper Lunch
Pho Saigon Pearl
SomiSomi
Tim Ho Wan
Tokyo Table
Urban Seoul
Yi-Gah Korean Cuisine

3. The District (Partial List)

Mendocino Farms
Target
Lowe's
Costco
Michael's
T.J. Maxx/Home Goods
Whole Foods
Chick-Fil-A
In-n-Out
Five Guys Burgers
Lucille's Smokehouse BBQ
Prego Ristorante
Pei Wei Asian Diner
RA Sushi
Wells Fargo
The Winery Restaurant
Golden Bank
Farmers & Merchant Bank
Daphne
Ike's
Subway
Portola Coffee Roasters
Starbucks

4. Von Karman Plaza

Staples
Walmart
Panda Express
The Habit Burger
Taco Bell
Jersey Mike's
Starbucks
Garbanzo Mediterranean Grill
Chase Bank



41
CP

Richard P. Sung
Managing Director

t 949-608-2178

m 408-205-3412

richard.sung@nmrk.com

CA RE Lic. #01953211

NEWMARK

18401 Von Karman Avenue
Suite 150
Irvine, CA 92612

nmrk.com

CORPORATE LICENSE #01355491

The distributor of this communication is performing acts for which a real estate license is required. The information contained herein has been obtained from sources deemed reliable but has not been verified and no guarantee, warranty or representation, either express or implied, is made with respect to such information. Terms of sale or lease and availability are subject to change or withdrawal without notice.