

SCHOOL FOR LEASE



# 426 OSCEOLA AVENUE SOUTH

ST. PAUL, MN







## PROPERTY HIGHLIGHTS



32,866 SF school building great for educational, nonprofits or other uses



17 classrooms including science lab and art room, gymnasium with stage, cafeteria and kitchen



Located just off West 7th Street and two blocks from Palace Park



Accessible via Metro Transit bus routes (54 and 74)



Ample parking with room for bus pick-up/drop-off



Negotiable lease rate



Available July 1, 2024





SCHOOL FOR LEASE

426 OSCEOLA  
AVENUE SOUTH  
ST. PAUL, MN



## CONTACT

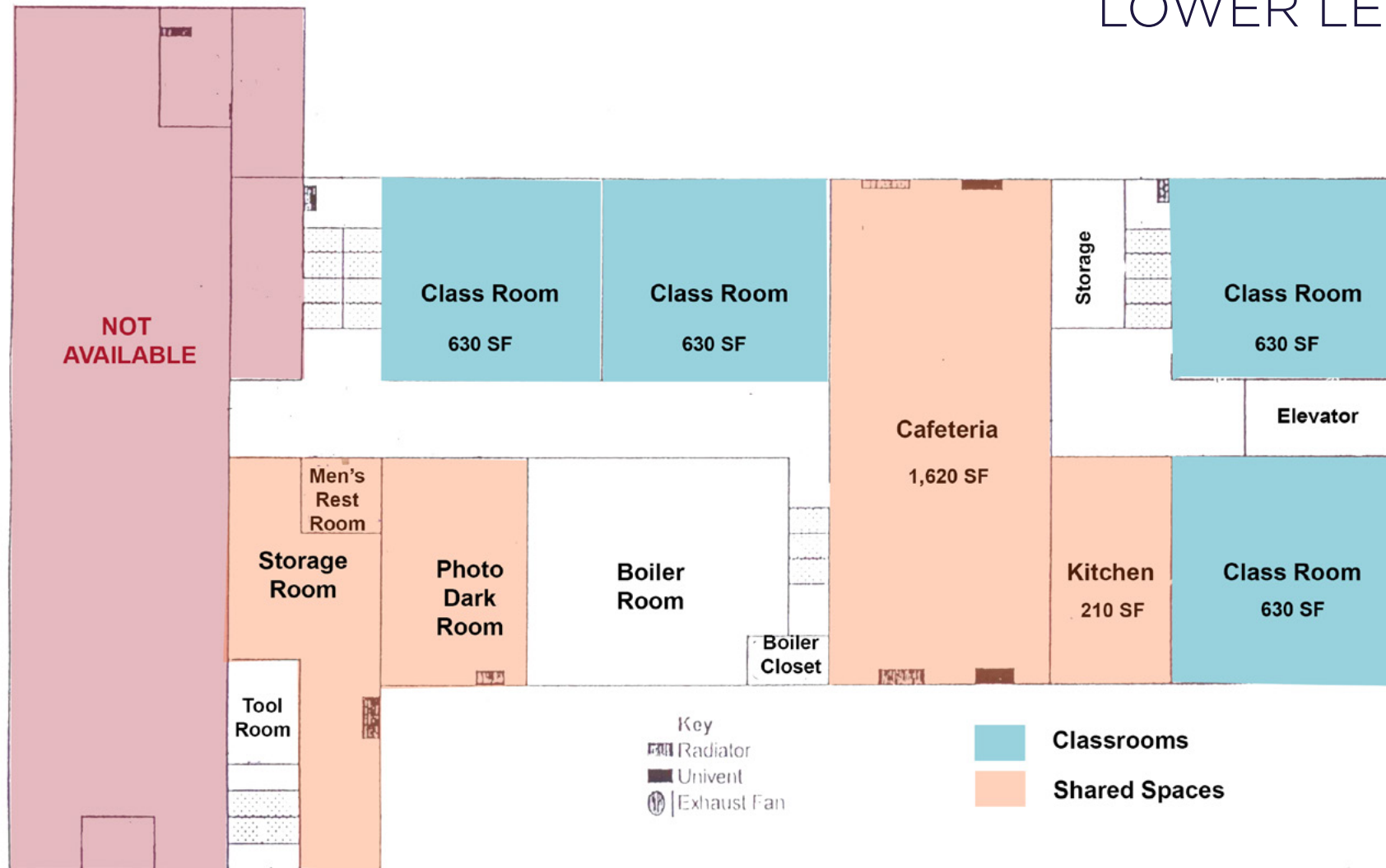
**SAM GLEASON**

Associate

+1 952 241 1111

[sam.gleason@cushwake.com](mailto:sam.gleason@cushwake.com)

# LOWER LEVEL



SCHOOL FOR LEASE

426 OSCEOLA  
AVENUE SOUTH  
ST. PAUL, MN



**SAM GLEASON**

Associate

+1 952 241 1111

[sam.gleason@cushwake.com](mailto:sam.gleason@cushwake.com)



# FIRST FLOOR



SCHOOL FOR LEASE

426 OSCEOLA  
AVENUE SOUTH  
ST. PAUL, MN



**SAM GLEASON**

Associate

+1 952 241 1111

sam.gleason@cushwake.com

# SECOND FLOOR



SCHOOL FOR LEASE

426 OSCEOLA  
AVENUE SOUTH  
ST. PAUL, MN



**SAM GLEASON**

Associate

+1 952 241 1111

[sam.gleason@cushwake.com](mailto:sam.gleason@cushwake.com)





SCHOOL FOR LEASE

426 OSCEOLA  
AVENUE SOUTH  
ST. PAUL, MN

## CONTACT

**SAM GLEASON**

Associate

+1 952 241 1111

[sam.gleason@cushwake.com](mailto:sam.gleason@cushwake.com)







SCHOOL FOR LEASE

426 OSCEOLA  
AVENUE SOUTH  
ST. PAUL, MN

## CONTACT

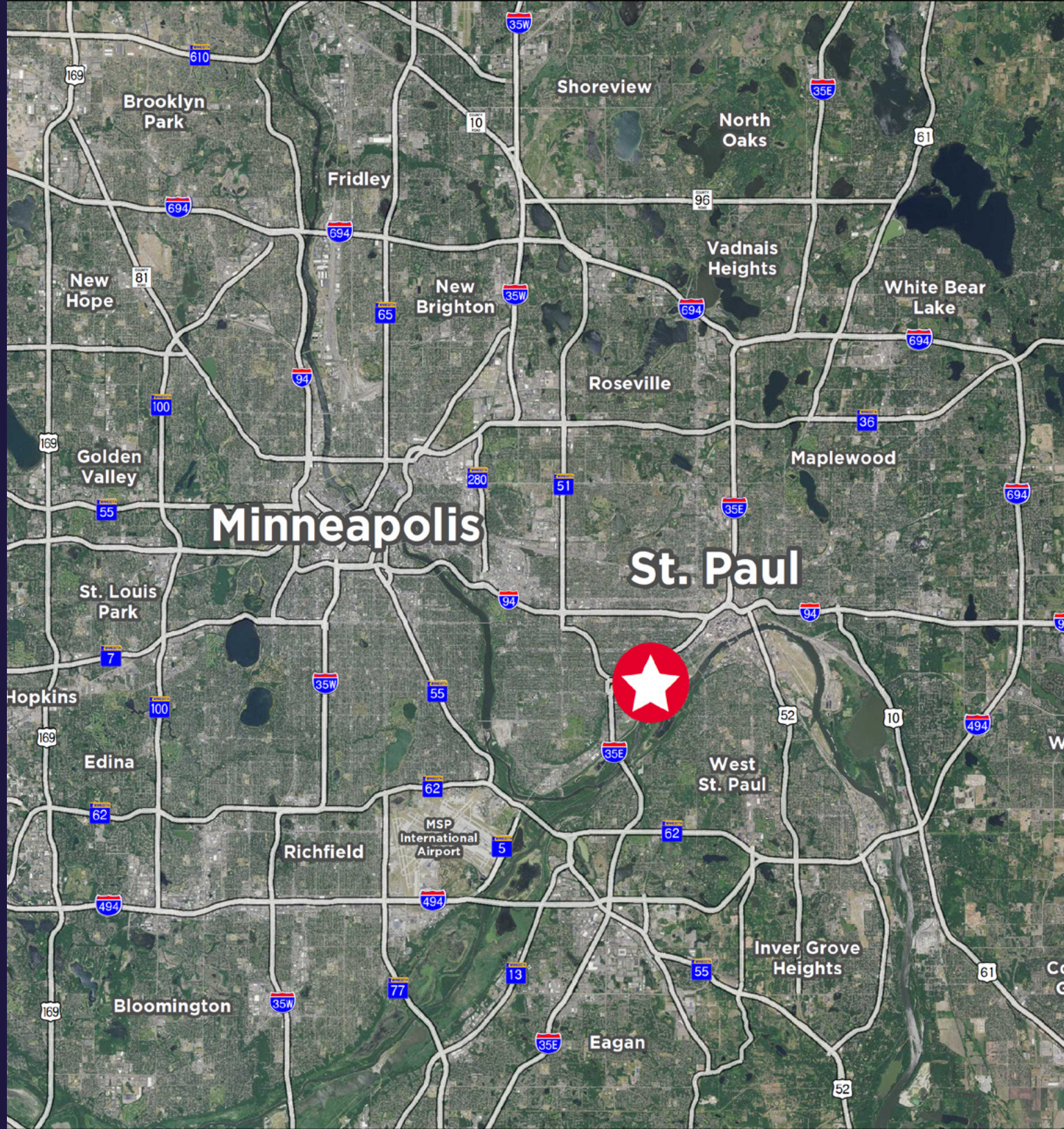
---

**SAM GLEASON**

Associate

+1 952 241 1111

[sam.gleason@cushwake.com](mailto:sam.gleason@cushwake.com)





## SCHOOL FOR LEASE

426 OSCEOLA  
AVENUE SOUTH  
ST. PAUL, MN

## CONTACT

### SAM GLEASON

Associate

+1 952 241 1111

sam.gleason@cushwake.com

# EXECUTIVE SUMMARY

	1 mile	3 miles	5 miles
<b>Population</b>			
2010 Population	13,571	147,489	322,365
<b>2017 Population</b>	<b>14,809</b>	<b>156,863</b>	<b>341,915</b>
2022 Population	15,643	163,509	355,843
2010-2017 Annual Rate	1.21%	0.85%	0.82%
2017-2022 Annual Rate	1.10%	0.83%	0.80%
<b>2017 Male Population</b>	<b>48.6%</b>	<b>48.5%</b>	<b>48.8%</b>
<b>2017 Female Population</b>	<b>51.4%</b>	<b>51.5%</b>	<b>51.2%</b>
<b>2017 Median Age</b>	<b>38.1</b>	<b>35.4</b>	<b>34.5</b>

Currently, the U.S. median age is 38.2 years old.

<b>Population by Employment</b>			
2017 Civilian Population Base	8,508	81,627	175,430
2017 % Civilian Labor Force Employed	94.8%	94.0%	93.9%
2017 % Civilian Labor Force Unemployed	5.2%	6.0%	6.1%
<b>Occupation Distribution</b>			
2017 % White Collar Jobs	72.3%	69.5%	67.8%
2017 % Services Jobs	15.6%	17.4%	17.1%
2017 % Blue Collar Jobs	12.2%	13.1%	15.1%

<b>Population by Education</b>			
2017 Education Base - Population 25 +	10,872	105,421	225,463
Less than 9th Grade	1.4%	5.3%	6.0%
9th - 12th Grade, No Diploma	2.9%	4.1%	4.5%
High School Graduate	16.2%	15.5%	16.4%
GED/Alternative Credential	3.2%	3.0%	3.1%
Some College, No Degree	18.7%	17.8%	18.0%
Associate Degree	7.2%	7.2%	7.7%
Bachelor's Degree	26.6%	26.6%	25.2%
Graduate/Professional Degree	23.7%	20.7%	19.1%

<b>Per Capita Income</b>			
<b>2017 Per Capita Income</b>	<b>\$42,422</b>	<b>\$34,856</b>	<b>\$32,035</b>
2022 Per Capita Income	\$48,367	\$39,516	\$36,040
2017-2022 Annual Rate	2.66%	2.54%	2.38%

Currently, the U.S. per capita income is \$30,820. The per capita income is projected to be \$34,828 in five years, for all U.S. households.

<b>Households</b>			
2010 Households	6,417	62,079	130,483
<b>2017 Total Households</b>	<b>6,929</b>	<b>65,843</b>	<b>137,603</b>
2022 Total Households	7,277	68,534	142,880
2010-2017 Annual Rate	1.06%	0.82%	0.74%
2017-2022 Annual Rate	0.98%	0.80%	0.76%
<b>2017 Average Household Size</b>	<b>2.10</b>	<b>2.30</b>	<b>2.40</b>

<b>Median Household Income</b>			
<b>2017 Median Household Income</b>	<b>\$57,108</b>	<b>\$53,927</b>	<b>\$53,371</b>
2022 Median Household Income	\$64,258	\$59,421	\$57,918
2017-2022 Annual Rate	2.39%	1.96%	1.65%

Currently, the median household income is \$56,124 for all U.S. households. Median household income is projected to be \$77,118 in five years, for all U.S. households.



## SCHOOL FOR LEASE

426 OSCEOLA  
AVENUE SOUTH  
ST. PAUL, MN

## CONTACT

**SAM GLEASON**

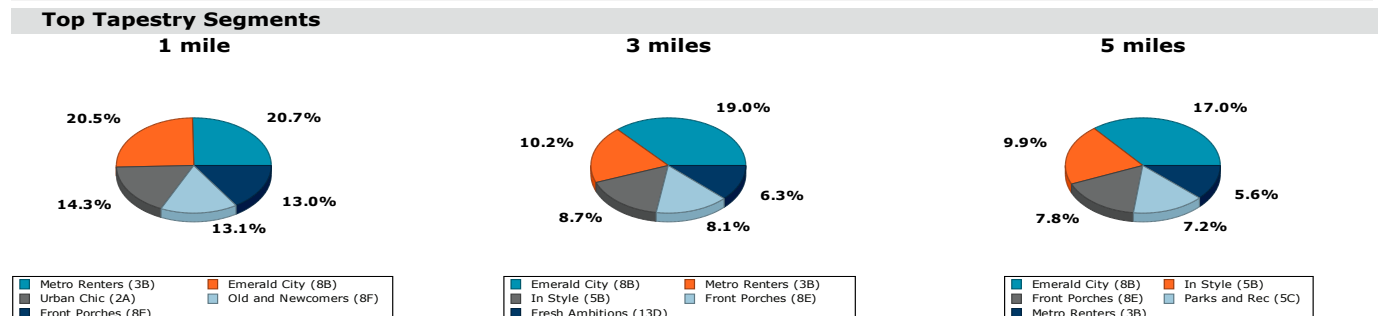
Associate

+1 952 241 1111

sam.gleason@cushwake.com

# EXECUTIVE SUMMARY

	1 mile	3 miles	5 miles
<b>Average Household Income</b>			
<b>2017 Average Household Income</b>	<b>\$90,900</b>	<b>\$81,718</b>	<b>\$78,082</b>
2022 Average Household Income	\$104,371	\$93,049	\$88,303
2017-2022 Annual Rate	2.80%	2.63%	2.49%
Currently, the average household income is \$80,675 for all U.S. households. Average household income is projected to be \$109,982 in five years, for all U.S. households			
<b>Households by Income</b>			
2017 Household Income Base	6,929	65,843	137,603
<\$15,000	634	8,311	16,178
\$15,000-\$24,999	622	7,335	15,074
\$25,000-\$34,999	742	6,408	13,973
\$35,000-\$49,999	1,050	8,517	19,039
\$50,000-\$74,999	1,136	10,907	24,022
\$75,000-\$99,999	727	7,496	16,281
\$100,000-\$149,999	988	8,873	18,284
\$150,000-\$199,999	418	3,621	7,277
\$200,000+	612	4,376	7,474
<b>Housing</b>			
<b>2010 Housing Units</b>	<b>6,918</b>	<b>67,513</b>	<b>141,307</b>
Owner Occupied Housing Units	51.8%	48.3%	51.3%
Renter Occupied Housing Units	40.9%	43.6%	41.1%
Vacant Housing Units	7.2%	8.0%	7.7%
<b>2017 Housing Units</b>	<b>7,432</b>	<b>70,872</b>	<b>147,917</b>
Owner Occupied Housing Units	50.6%	47.2%	50.1%
Renter Occupied Housing Units	42.6%	45.7%	42.9%
Vacant Housing Units	6.8%	7.1%	7.0%
<b>2022 Housing Units</b>	<b>7,805</b>	<b>73,648</b>	<b>153,484</b>
Owner Occupied Housing Units	50.4%	47.0%	49.9%
Renter Occupied Housing Units	42.9%	46.1%	43.2%
Vacant Housing Units	6.8%	6.9%	6.9%
Currently, in the U.S., 55.6% of the housing units are owner occupied; 33.1% are renter occupied; and 11.3% are vacant.			
<b>Daytime Population</b>			
Total Employees	10,508	147,593	248,513
Total Businesses	584	6,789	12,756
Total Residential Population	14,809	156,863	341,915
Employee/Residential Population Ratio	71	94	73



Source: U.S. Census Bureau, Census 2010 Data. Esri forecasts for 2017 and 2022