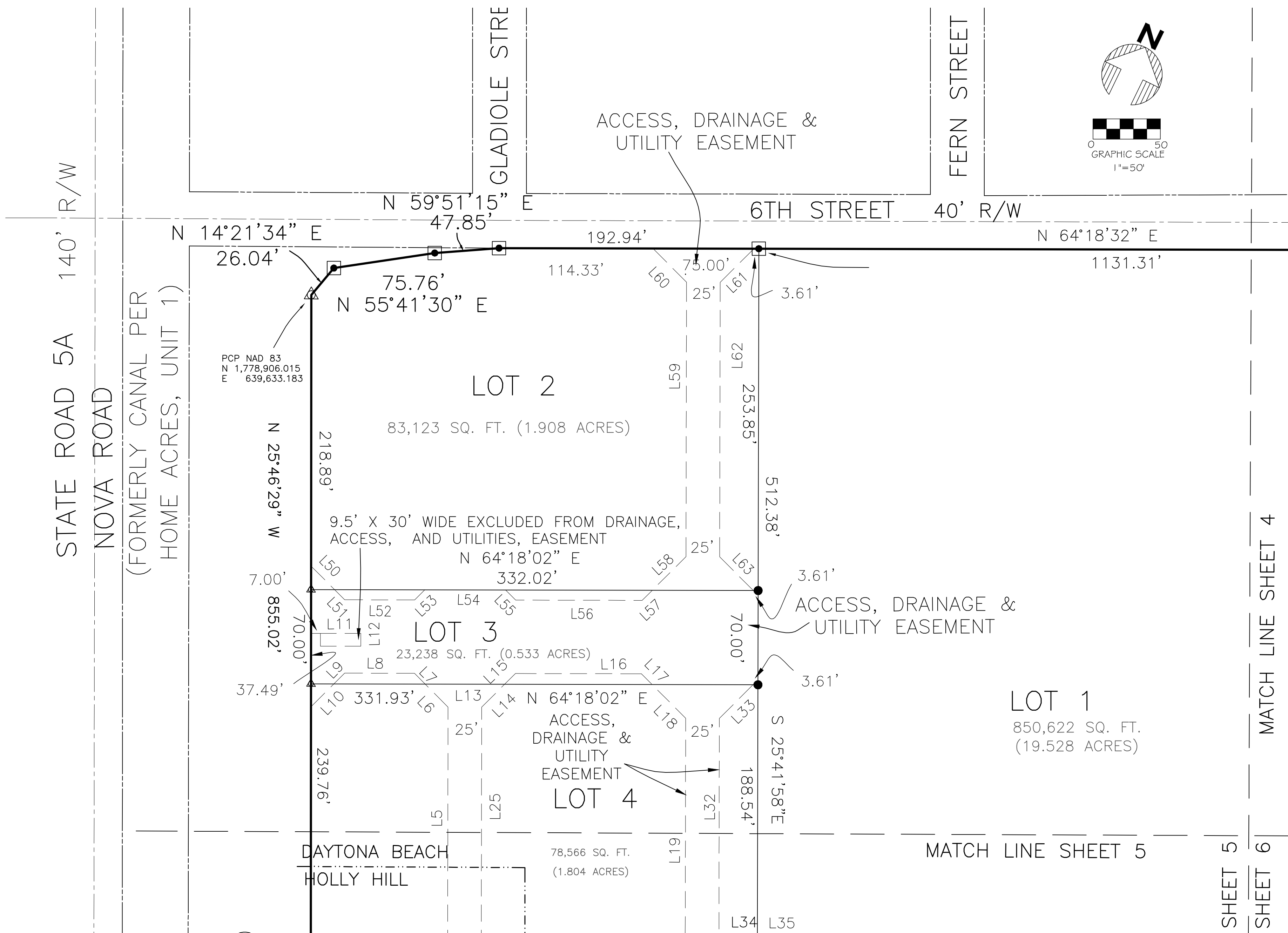


HALIFAX MEDIA

A REPLAT OF A PORTION OF LOTS 5 AND 6, BLOCK 20, MASON AND CARSWELL'S HOLLY HILL, ACCORDING TO PLAT THEREOF RECORDED IN MAP BOOK 2, PAGE 90, OF THE PUBLIC RECORDS OF VOLUSIA COUNTY, FLORIDA AND ALSO RECORDED IN MAP BOOK 12, PAGES 3 AND 4 OF THE PUBLIC RECORDS OF VOLUSIA COUNTY, FLORIDA. SAID PARCEL ALSO BEING A PORTION OF BLOCKS 18, 19, 20 AND A PORTION OF GLADIOLE STREET AND FERN STREET, AS SHOWN ON REPLAT NUMBER ONE OF HOME ACRES ACCORDING TO PLAT THEREOF RECORDED IN MAP BOOK 11, PAGE 64 OF THE PUBLIC RECORDS OF VOLUSIA COUNTY, FLORIDA. ALL BEING IN SECTION 37, THOMAS FITCH GRANT, TOWNSHIP 15, SOUTH, RANGE 32 EAST.



LINE TABLE		
LINE NO	BEARING	DISTANCE
L1	S 70°44'13" E	38.35'
L2	N 64°18'02" E	61.33'
L3	N 19°18'02" E	21.21'
L4	N 25°41'08" W	120.84'
L5	N 25°41'08" W	222.76'
L6	N 70°41'58" W	24.04'
L7	N 70°41'58" W	11.31'
L8	S 64°18'02" W	51.84'
L9	N 19°15'47" W	11.31'
L10	S 19°15'47" W	24.03'
L11	N 64°18'02" E	30.00'
L12	S 25°41'58" E	9.50'
L13	N 64°18'02" E	59.00'
L14	S 19°15'47" W	24.03'
L15	N 19°15'47" W	11.31'
L16	S 64°18'02" W	93.49'
L17	N 70°41'58" W	11.31'
L18	N 70°41'58" W	24.04'
L19	S 25°41'58" E	214.75'
L20	S 19°18'02" E	35.36'
L21	S 64°18'02" W	111.49'
L22	N 70°41'58" W	21.21'
L23	S 25°41'58" E	110.84'
L24	N 25°41'58" W	120.84'
L25	N 25°41'58" W	222.76'
L26	N 64°18'02" E	145.60'
L27	S 70°41'58" E	32.84'
L28	N 64°18'02" E	118.45'
L29	S 25°41'58" E	8.99'
L30	N 64°18'02" E	157.18'
L31	N 25°41'58" W	160.84'
L32	N 25°41'58" W	214.75'
L33	N 19°18'02" E	35.36'
L34	S 64°18'02" W	19.11'
L35	N 64°18'02" E	10.89'
L36	S 25°41'58" E	211.50'
L37	S 70°45'25" E	21.19'
L38	S 19°18'02" W	35.36'
L39	S 64°18'02" W	129.59'
L40	S 19°15'47" W	22.63'
L41	N 53°48'03" E	28.52'
L42	N 89°39'08" W	11.82'
L43	N 77°16'19" W	19.63'
L44	N 41°42'15" W	37.84'
L45	N 45°19'34" W	50.54'
L46	N 02°31'40" W	28.00'
L47	N 65°09'56" E	23.94'
L48	S 27°09'45" E	33.75'
L49	S 41°17'11" E	8.47'
L50	S 70°44'13" W	24.76'
L51	S 70°44'13" E	10.61'
L52	N 64°18'02" E	52.00'
L53	N 19°18'02" E	10.61'
L54	N 64°18'02" E	60.00'
L55	S 70°41'58" E	10.61'
L56	N 64°18'02" E	93.90'
L57	N 19°18'02" E	10.61'
L58	N 19°18'02" E	35.35'
L59	N 25°41'58" W	203.87'
L60	N 70°41'58" W	35.36'
L61	S 19°18'02" W	35.36'
L62	S 25°41'58" E	203.87'
L63	S 70°41'58" E	35.36'
L64	N 25°41'58" W	219.28'

OR...OFFICIAL RECORD
PG...PAGE
R/W RIGHT-OF-WAY
CM CONCRETE MONUMENT
IR ... 5/8" IRON ROD AND CAP LB 3612
PCP PERMANENT CONTROL POINT LB 3612 "PRM"
PRM PERMANENT REFERENCE MONUMENT
POS...POINT OF BEGINNING
NAD 83 ... NORTH AMERICAN DATUM OF 1983

ABBREVIATIONS / LEGEND

UPHAM
CIVIL ENGINEERING, SURVEYING & LANDSCAPE ARCHITECTURE
265 Kanielworth Avenue, Ormond Beach, Florida 32174
Voice: 386.672.9515 ~ Fax: 386.673.6554 ~ uphaminc.com
LB # 0003612 LC # 0000357