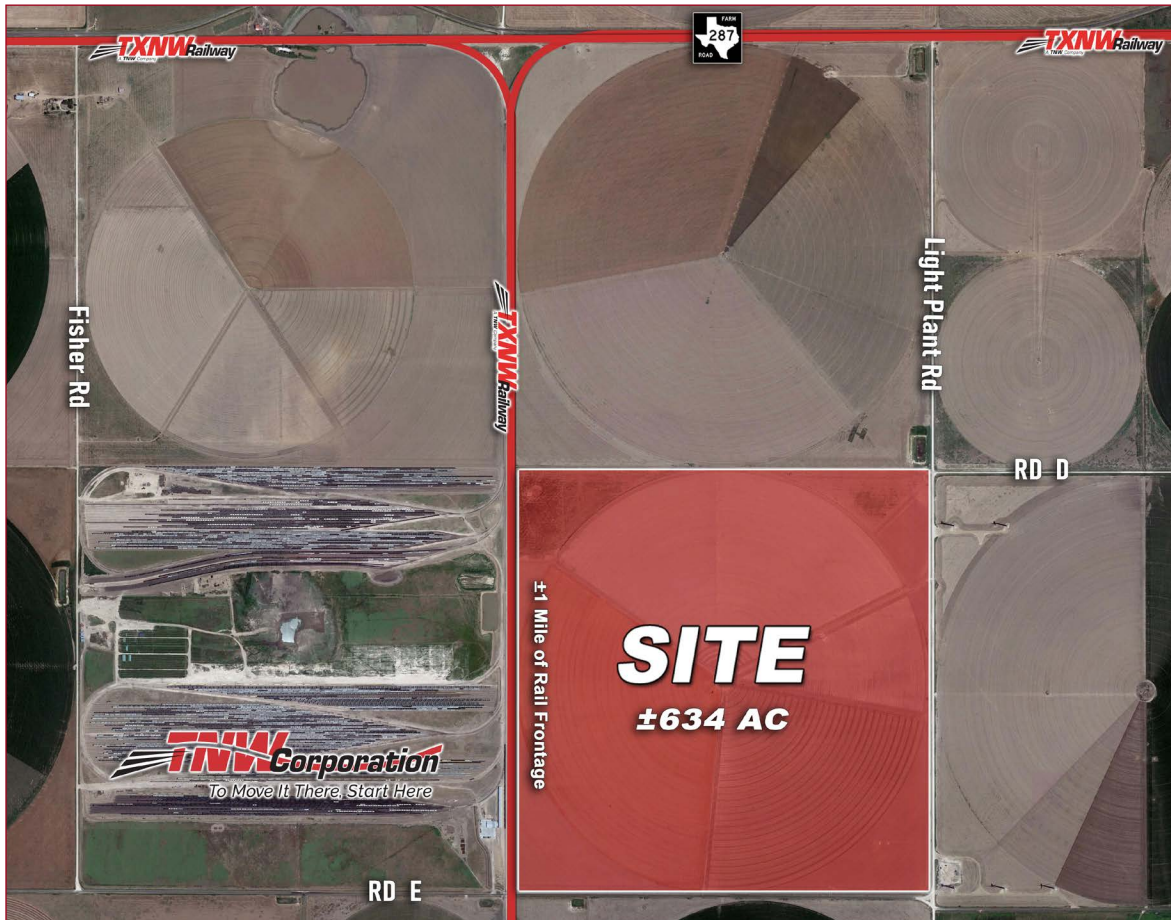


±634 ACRE RAIL SERVED PROPERTY FOR SALE/LEASE

SWC of Light Plant Rd & Rd D | Moore County, Texas



LOCATION:

SWC of Light Plant Rd & Rd D, east of US 287 between Cactus & Sunray, Moore County, TX

PROPERTY DESCRIPTION:

- Property ID: 23237
- Legal Acreage: ±634 Acres
- Legal Description: SEC 2 BLK M-2 B HARWELL 634 ACS ABST 1095 SUNRAY
- Subdivision Code: 122
- Block: M-2
- School District: 31
- Outside City Limits
- Located in Moore County
- Price: Contact Seller
- Served by TXNW Railway

DEMOGRAPHICS

	5 Miles	10 miles	20 miles	30 miles
2020 Population	1,988	8,305	22,778	32,250
Daytime Population	2,165	10,683	23,207	31,639
Average HH Income	\$71,949	\$69,717	\$70,417	\$71,525

TRAFFIC COUNTS:

US 287: 12,644 VPD north of FM 281

US 287: 7,253 VPD south of FM 281
(TXDOT 2019)

±634 ACRE RAIL SERVED PROPERTY FOR SALE/LEASE

SWC of Light Plant Rd & Rd D | Moore County, Texas



Continental
Carbon Co

RD E



SITE

RD D

±634 ACRE RAIL SERVED PROPERTY FOR SALE/LEASE

SWC of Light Plant Rd & Rd D | Moore County, Texas



±634 ACRE RAIL SERVED PROPERTY FOR SALE/LEASE

SWC of Light Plant Rd & Rd D | Moore County, Texas

SITE



Fisher Rd

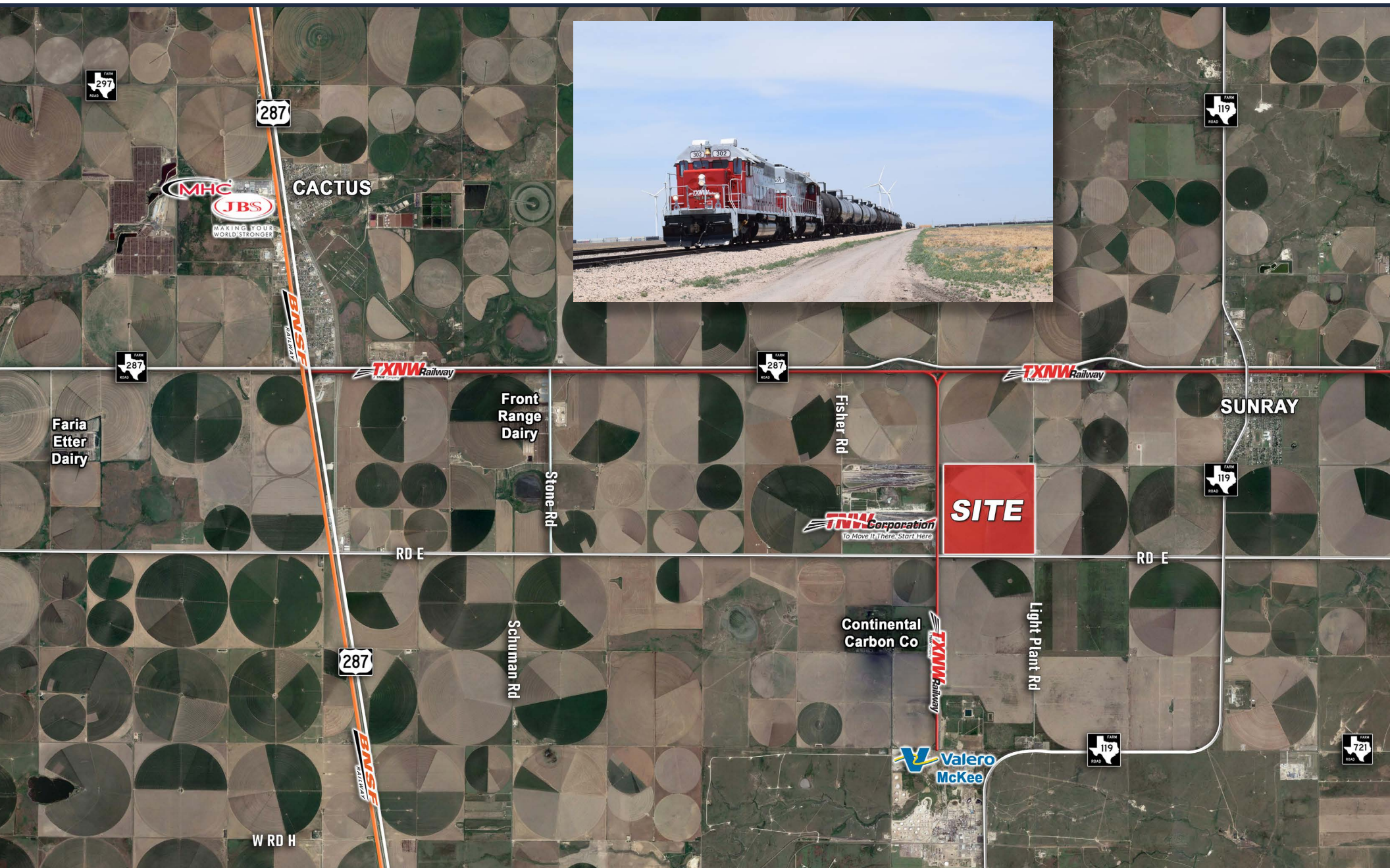
Rd E

WADE HOFFMANN • WHOFFMANN@TNW-RR.COM • 972-432-5964

The information contained herein was obtained from sources deemed reliable and accurate; however, no guarantees or warranties are made as to the completeness and accuracy thereof.

±634 ACRE RAIL SERVED PROPERTY FOR SALE/LEASE

SWC of Light Plant Rd & Rd D | Moore County, Texas



WADE HOFFMANN • WHOFFMANN@TNW-RR.COM • 972-432-5964

The information contained herein was obtained from sources deemed reliable and accurate; however, no guarantees or warranties are made as to the completeness and accuracy thereof.