

10320 Hickman Rd.

Showroom/Warehouse

Available Space

- + 58,816 SF
- + Lot Area 4.01 Acres

Building Features

- + 22,654 SF Showroom
- + 2,520 SF Office
- + 33,642 SF Storage/Warehouse
- + Built in 1972, remodeled in 2003
- + Outdoor Storage Capabilities
- + 3-Phase Power, 800 Amps

Pricing

- + Lease Rate: \$11.00/SF NNN
- + Sale Price: \$7,050,000

Locational Advantages

- + Easy access to I-35/80
- + 27,200 VPD on Hickman Road
- + Highly visible from Hickman Road
- + Direct access to lighted intersection
- + 9 Drive in doors (10'x12') and (12'x12')
- + Clear Height - 14'-16'

Contact Us

Harrison Kruse, SIOR, CCIM

Vice President
+1 515 221 6648
harrison.kruse@cbre.com
Licensed in the State of Iowa

Ned Turner

Sales Associate
+1 515 371 0499
ned.turner@cbre.com
Licensed in the State of Iowa

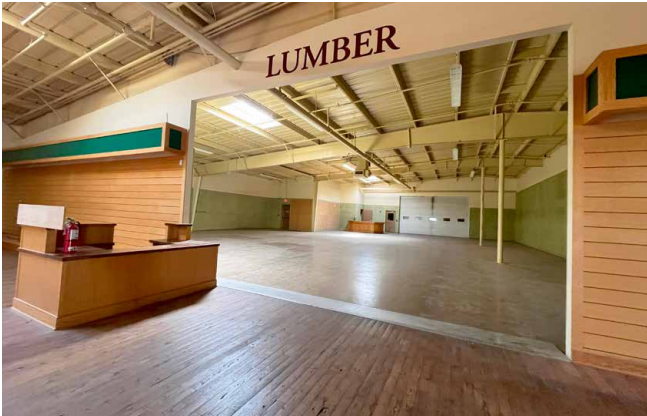
10320 Hickman Rd
Clive, IA 50325
www.cbre.com/desmoines



10320 Hickman Rd
Clive, IA 50325

Interior Photos

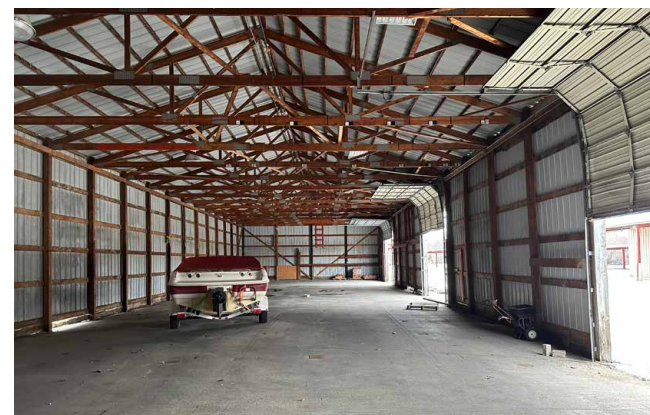
For Sale or Lease



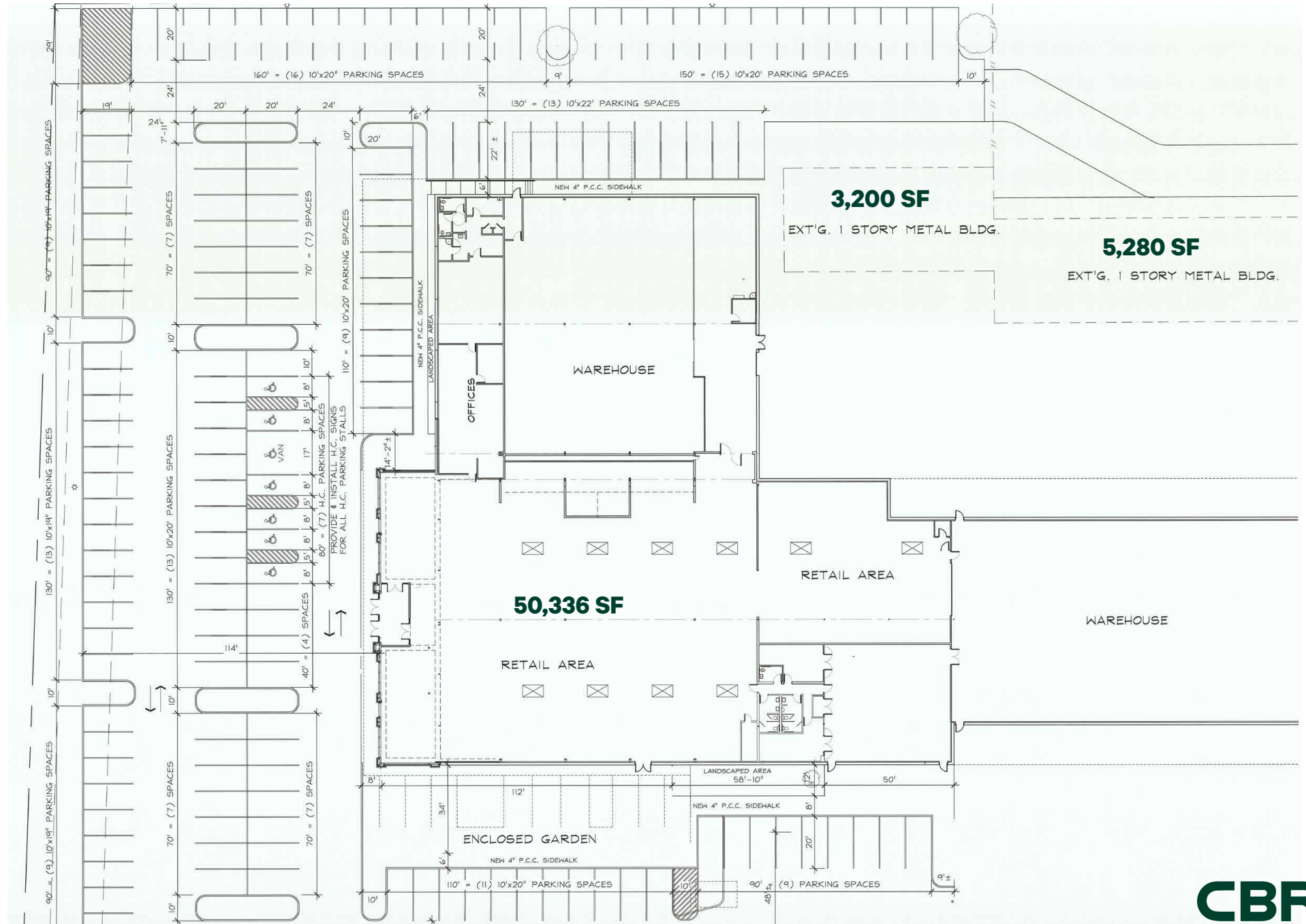
10320 Hickman Rd
Clive, IA 50325

For Sale or Lease

Exterior Photos



Floor Plan



10320 Hickman Rd
Clive, IA 50325

For Sale or Lease

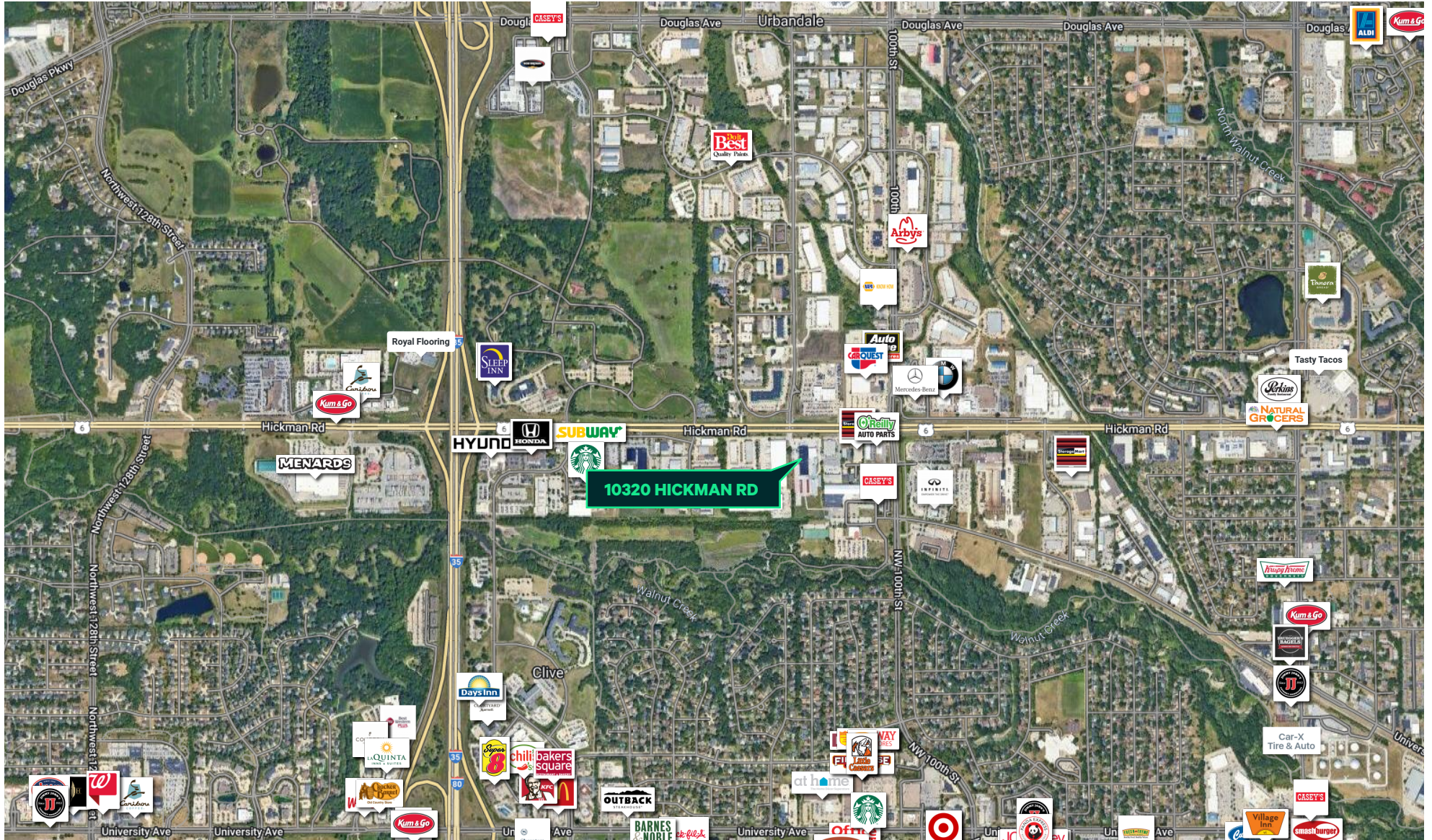
Site Plan



10320 Hickman Rd
Clive, IA 50325

For Sale or Lease

Location



© 2024 CBRE, Inc. All rights reserved. This information has been obtained from sources believed reliable, but has not been verified for accuracy or completeness. You should conduct a careful, independent investigation of the property and verify all information. Any reliance on this information is solely at your own risk. CBRE and the CBRE logo are service marks of CBRE, Inc. All other marks displayed on this document are the property of their respective owners, and the use of such logos does not imply any affiliation with or endorsement of CBRE. Photos herein are the property of their respective owners. Use of these images without the express written consent of the owner is prohibited.

www.cbre.com/desmoines

CBRE