

SPACE FOR LEASE

348 CONEY ISLAND AVENUE

Brooklyn, NY 11218



COMMERCIAL
ACQUISITIONS
REALTY SERVICES



FOR MORE INFORMATION ON THIS PROPERTY PLEASE VISIT: COMMERCIALACQ.COM



PROPERTY DETAILS

LOCATION INFO

Btw Caton Ave & Caton Pl

SIZE:

10,000 SF

COMMENTS

- Good for Retail, and Industrial use
- Electronic Gate Access, 15 foot ceiling
- Loading Dock (truck size-26ft)
- Close Proximity To Major Highways

PRICE: Upon Request

NEIGHBORHOOD

Windsor Terrace

FLOOR

Ground

BLOCK & LOT

05322-0069

ZONING

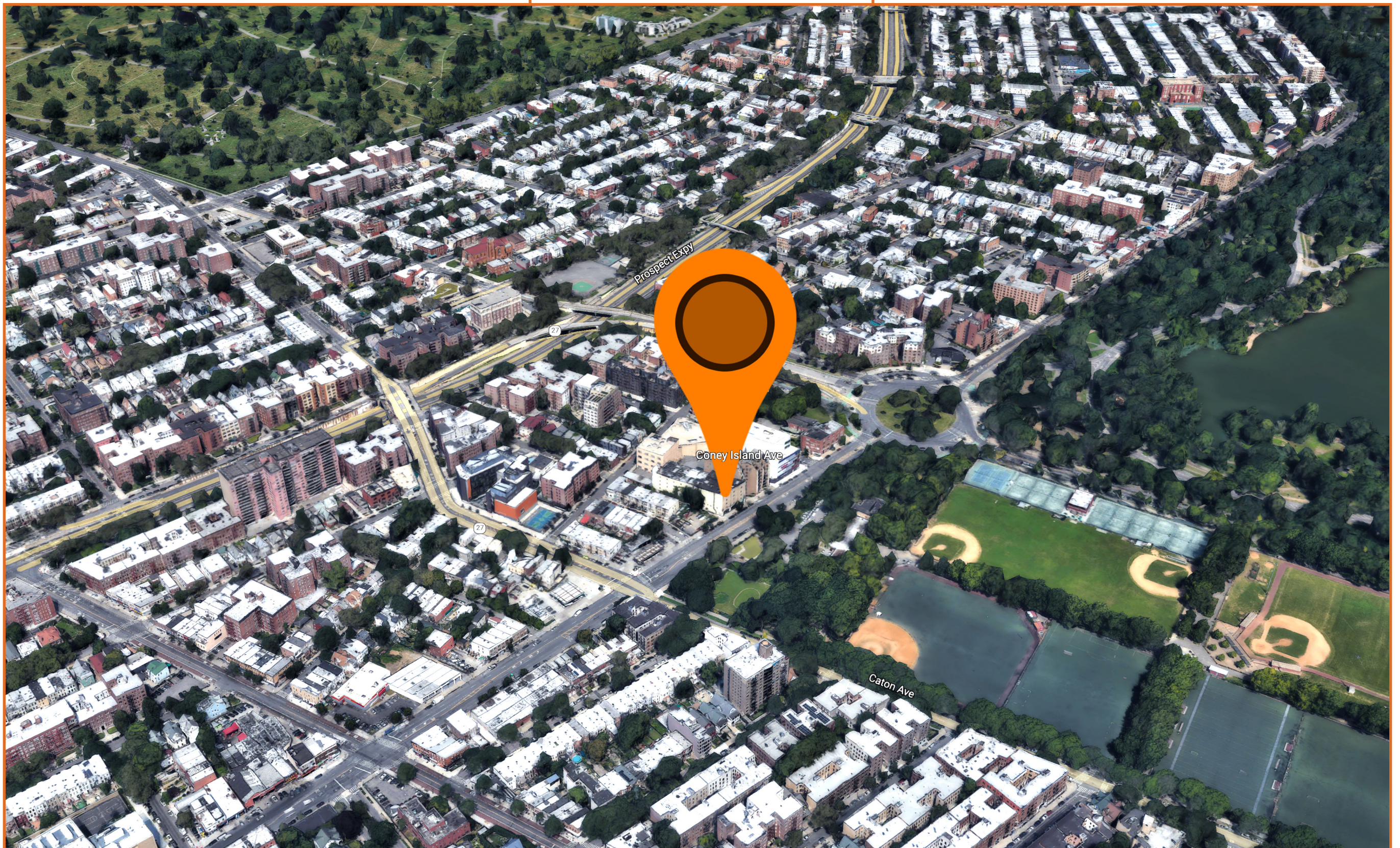
C8-2, 0P

TRANSPORTATION



NEIGHBORING TENANTS

- 7-Eleven
- Dunkin
- BP Gas
- Auto Zone
- Park Fitness Gym
- Hollywood Car Wash



348 Coney Island Avenue



COMMERCIAL
ACQUISITIONS
REALTY SERVICES

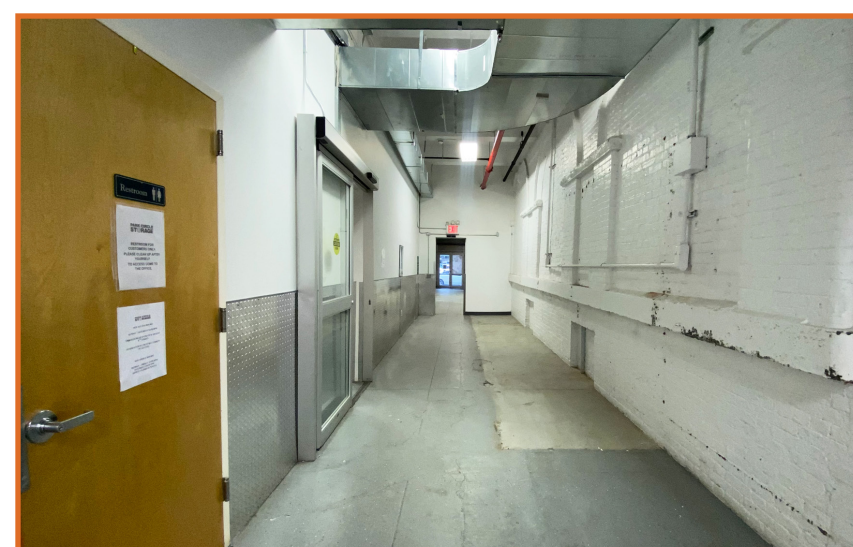
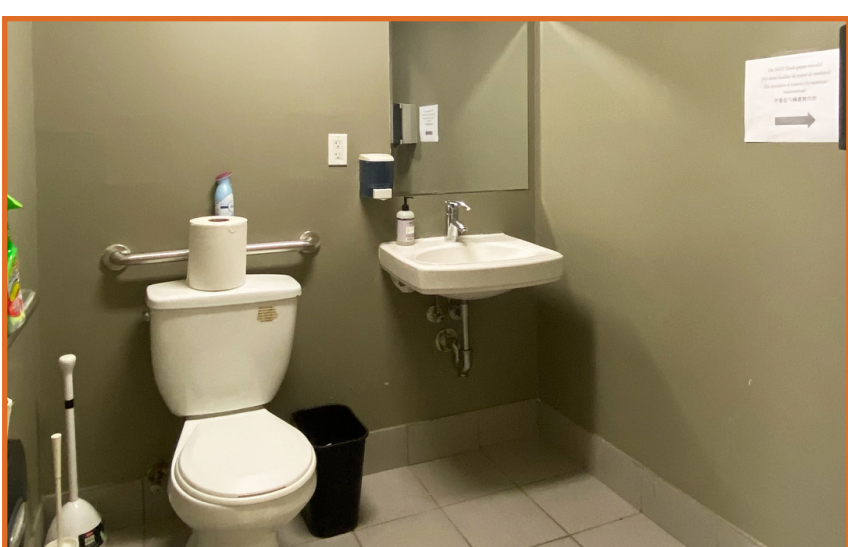
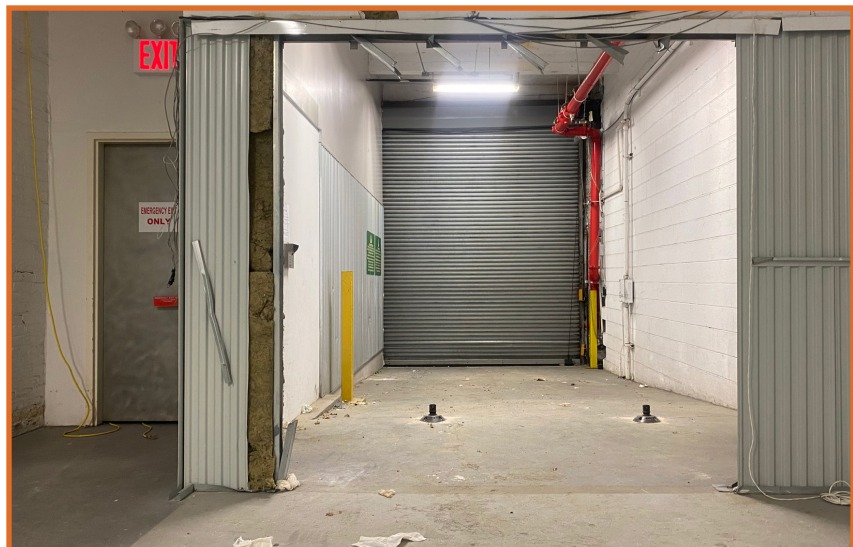
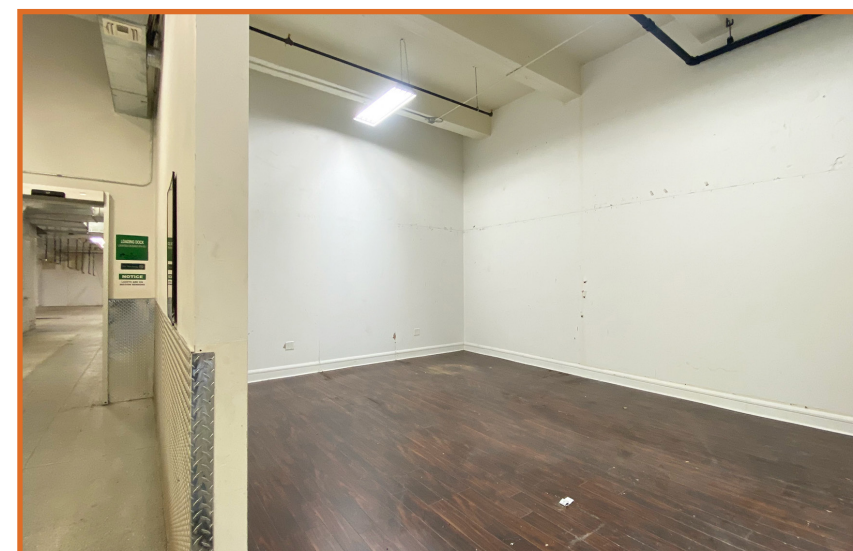


Alternate address(es) 55 REAR E Eighth St

FOR MORE INFORMATION ON THIS PROPERTY PLEASE VISIT: COMMERCIALACQ.COM



348 Coney Island Avenue



CONTACT EXCLUSIVE BROKER

ARSEN ATBASHYAN

CELL. 917.939.3760

Arsen@CommercialACQ.com

FOR MORE INFORMATION ON THIS PROPERTY PLEASE CALL OUR OFFICE: 718.517.8700

2500 CONEY ISLAND AVENUE, 2ND FLOOR, BROOKLYN, NY 11223 | 718.513.1889 | ARSEN@COMMERCIALACQ.COM | COMMERCIALACQ.COM

Commercial Acquisitions Inc. has made every effort to obtain the information regarding these listings from sources deemed reliable. However, we cannot warrant the complete accuracy thereof subject to errors, omissions, change of price, rental or other conditions, prior sale, lease or financing, or withdrawal without notice. We recommend to the buyer that any information, which is of special interest, should be obtained through independent verification. ALL MEASUREMENTS MAY BE APPROXIMATE.