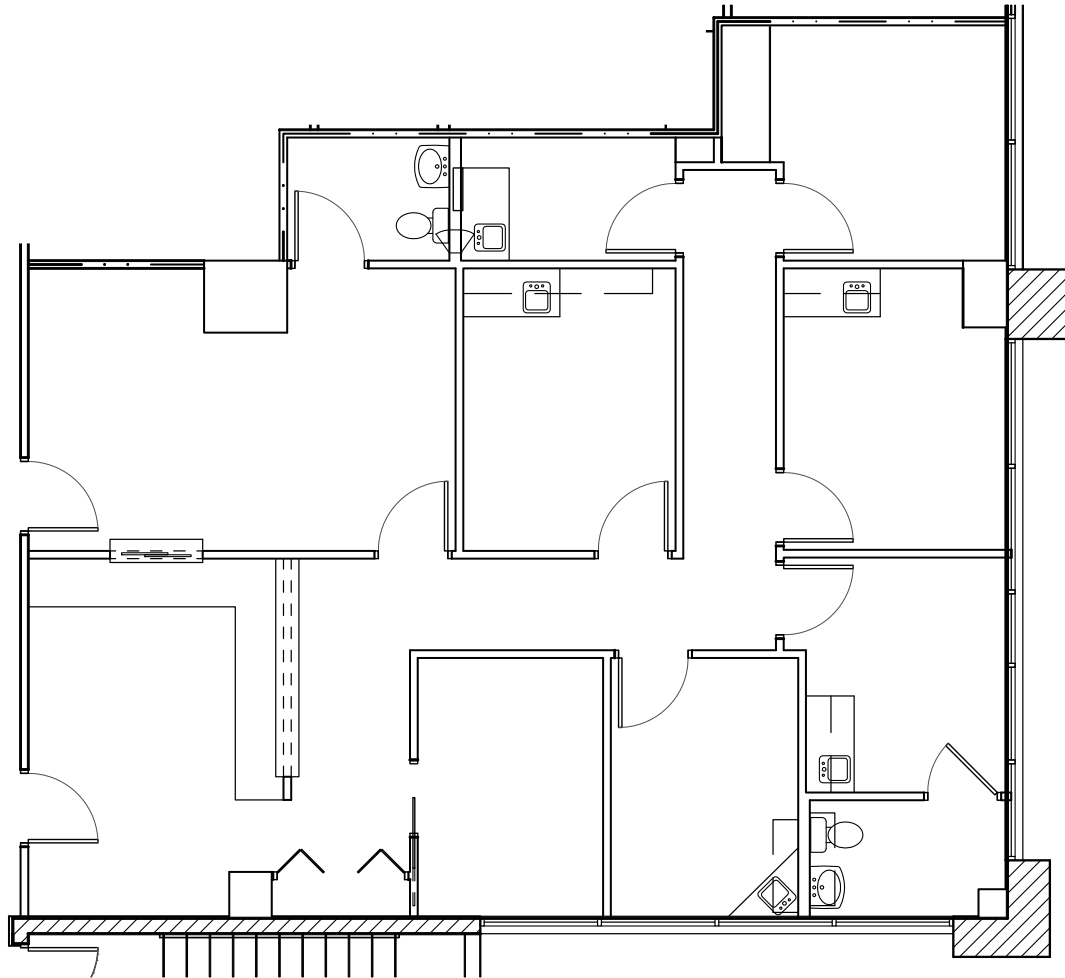


FOR LEASE

# Arrowhead Medical Plaza I

6525 W SACK DRIVE, GLENDALE, AZ 85308

Suite 202



**1,592**  
SQUARE FEET

**PERRY GABUZZI, CCIM**  
602.513.5116  
[perry.gabuzzi@kidder.com](mailto:perry.gabuzzi@kidder.com)

**RACHAEL THOMPSON**  
602.513.5122  
[rachael.thompson@kidder.com](mailto:rachael.thompson@kidder.com)

[KIDDER.COM](http://KIDDER.COM)

This information supplied herein is from sources we deem reliable. It is provided without any representation, warranty, or guarantee, expressed or implied as to its accuracy. Prospective Buyer or Tenant should conduct an independent investigation and verification of all matters deemed to be material, including, but not limited to, statements of income and expenses. Consult your attorney, accountant, or other professional advisor.

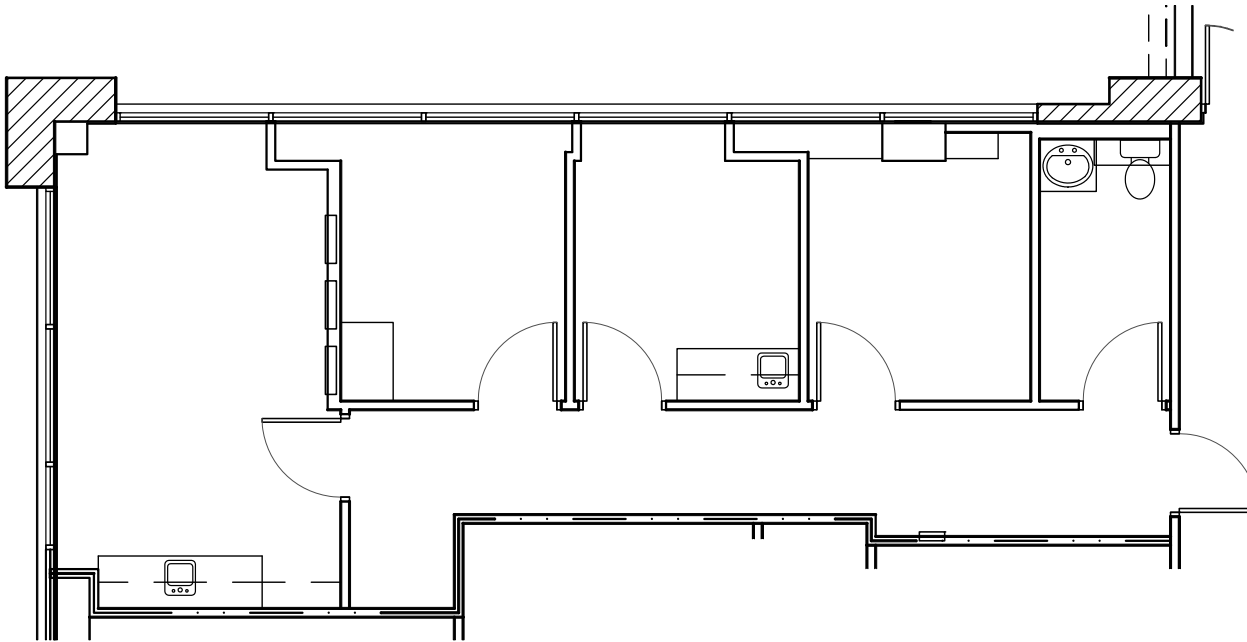
**km** Kidder  
Mathews

**FOR LEASE**

# Arrowhead Medical Plaza I

6525 W SACK DRIVE, GLENDALE, AZ 85308

Suite 207



**827**  
SQUARE FEET

**PERRY GABUZZI, CCIM**  
602.513.5116  
[perry.gabuzzi@kidder.com](mailto:perry.gabuzzi@kidder.com)

**RACHAEL THOMPSON**  
602.513.5122  
[rachael.thompson@kidder.com](mailto:rachael.thompson@kidder.com)

**KIDDER.COM**

This information supplied herein is from sources we deem reliable. It is provided without any representation, warranty, or guarantee, expressed or implied as to its accuracy. Prospective Buyer or Tenant should conduct an independent investigation and verification of all matters deemed to be material, including, but not limited to, statements of income and expenses. Consult your attorney, accountant, or other professional advisor.

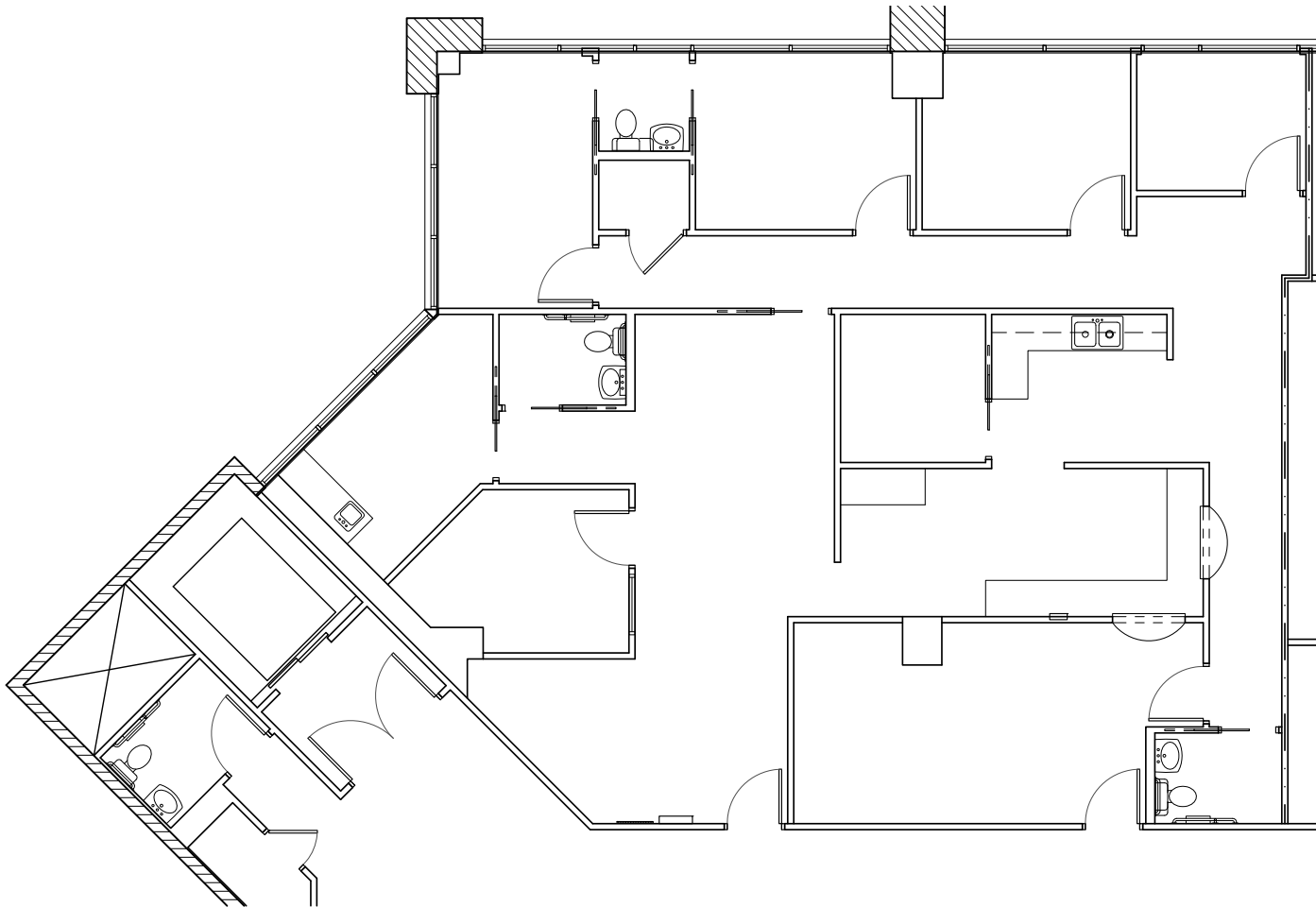
**km** Kidder  
Mathews

FOR LEASE

# Arrowhead Medical Plaza I

6525 W SACK DRIVE, GLENDALE, AZ 85308

Suite 301



2,302

SQUARE FEET

PERRY GABUZZI, CCIM

602.513.5116

[perry.gabuzzi@kidder.com](mailto:perry.gabuzzi@kidder.com)

RACHAEL THOMPSON

602.513.5122

[rachael.thompson@kidder.com](mailto:rachael.thompson@kidder.com)

KIDDER.COM

This information supplied herein is from sources we deem reliable. It is provided without any representation, warranty, or guarantee, expressed or implied as to its accuracy. Prospective Buyer or Tenant should conduct an independent investigation and verification of all matters deemed to be material, including, but not limited to, statements of income and expenses. Consult your attorney, accountant, or other professional advisor.

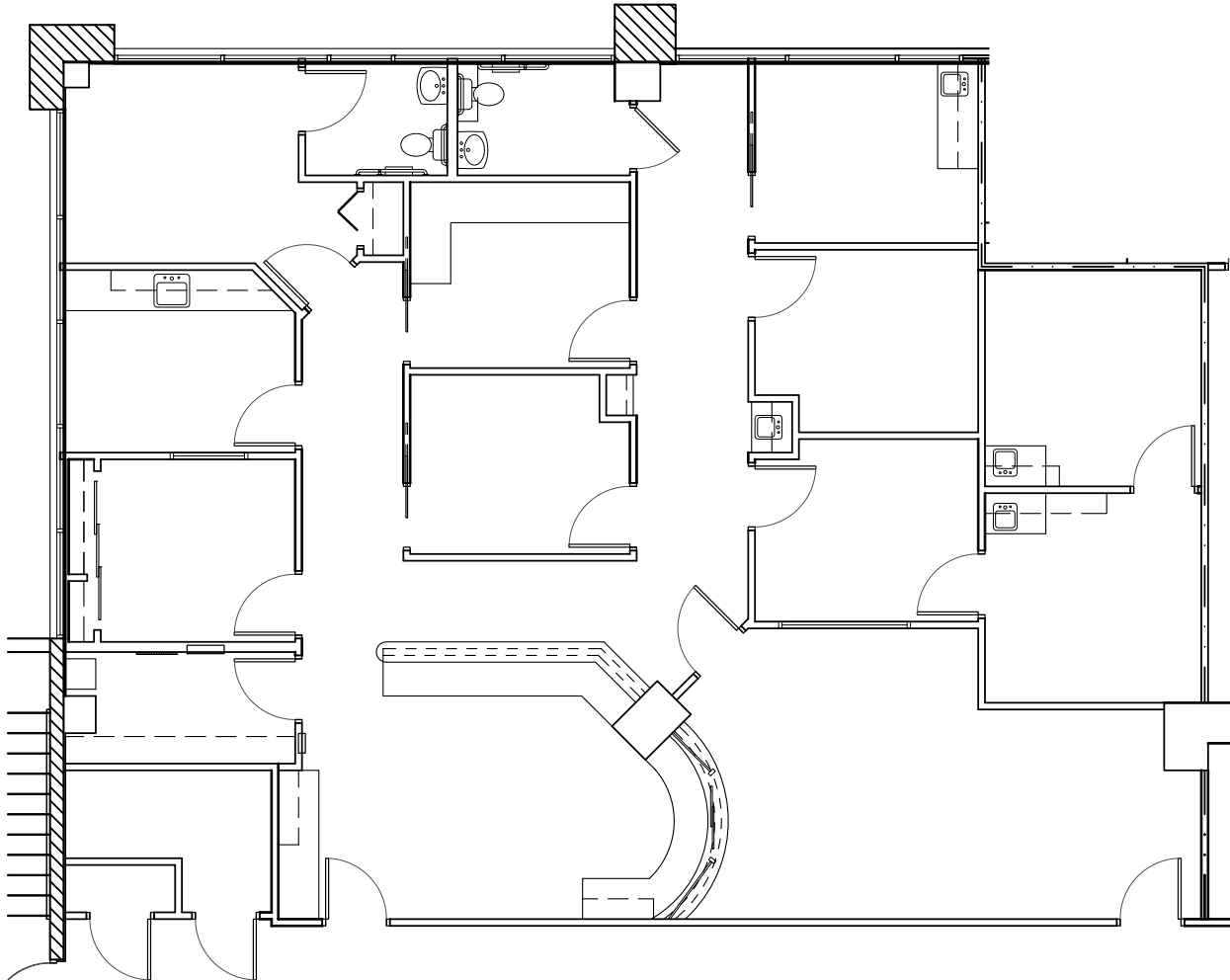
 **Kidder  
Mathews**

FOR LEASE

# Arrowhead Medical Plaza I

6525 W SACK DRIVE, GLENDALE, AZ 85308

Suite 306



2,546

SQUARE FEET

PERRY GABUZZI, CCIM

602.513.5116

[perry.gabuzzi@kidder.com](mailto:perry.gabuzzi@kidder.com)

RACHAEL THOMPSON

602.513.5122

[rachael.thompson@kidder.com](mailto:rachael.thompson@kidder.com)

KIDDER.COM

This information supplied herein is from sources we deem reliable. It is provided without any representation, warranty, or guarantee, expressed or implied as to its accuracy. Prospective Buyer or Tenant should conduct an independent investigation and verification of all matters deemed to be material, including, but not limited to, statements of income and expenses. Consult your attorney, accountant, or other professional advisor.

 **Kidder  
Mathews**