



FOR SUBLEASE

3949 Lindell Boulevard

St. Louis, MO 63108

Sublease Rate:

\$18.00 PSF, NNN

CONTACT US

Tony Kennedy, ccim

Senior Vice President
+1 314 630 4152
tony.kennedy@colliers.com

Carter Kennedy

Senior Vice President
+1 415 288 7846
carter.kennedy@colliers.com

Colliers

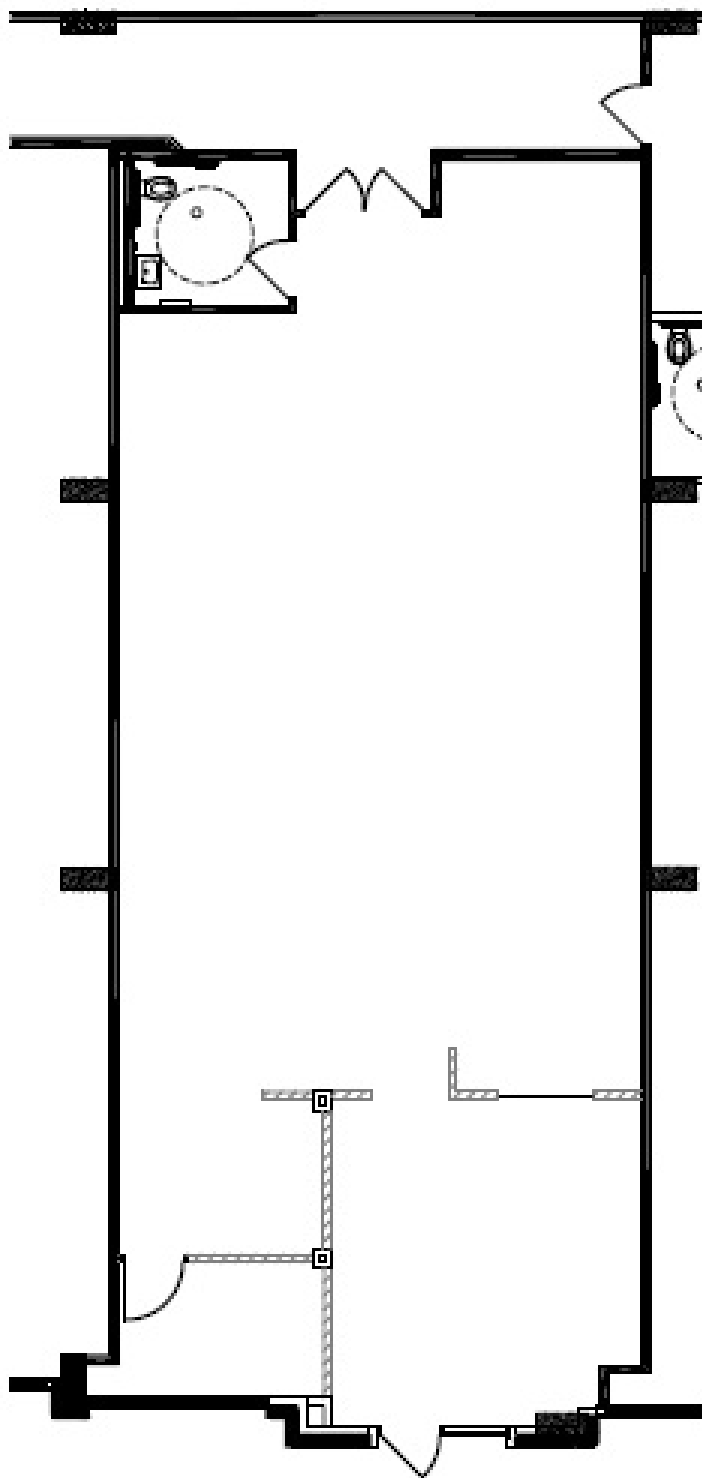
101 South Hanley Road
Suite 1400
St. Louis, MO 63105
+1 314 863 4447
colliers.com/stlouis

Retail/Service Center For Sublease at The Landing in Midtown

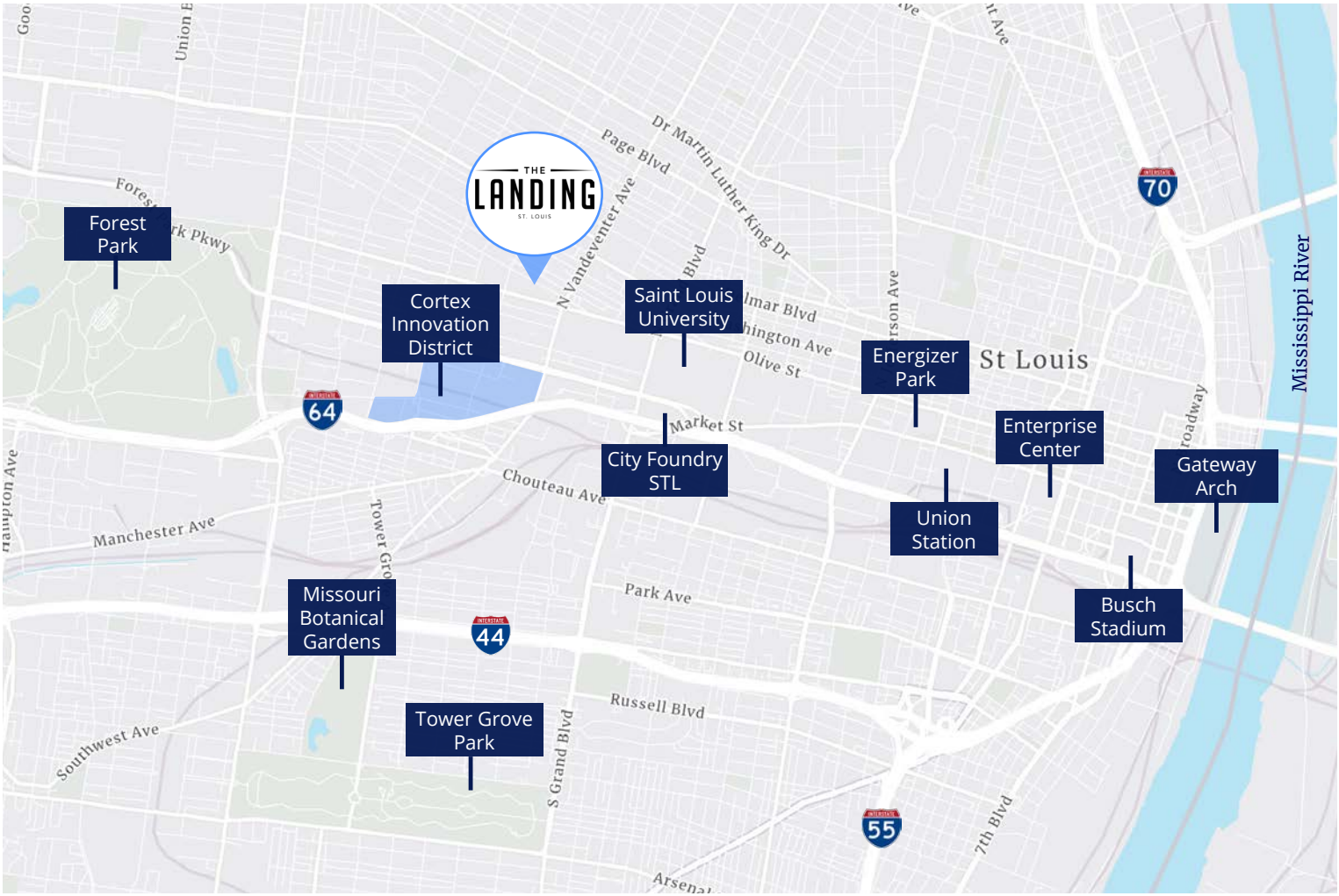
Highlights

- 1,728 SF retail/service center for sublease
- Sublease thru October 21, 2029
- Move-in ready
- Ample street and garage parking
- Located in Midtown, a revitalized and growing area in St. Louis that offers connectivity, vibrant dining and retail shopping, and proximity to top universities and talent in an energetic district.

FLOOR PLAN



LOCATION



Demographics	Population	Households	Avg HH Income	Businesses	Employees
1 Mile	21,455	11,447	\$90,258	1,481	22,669
3 Miles	138,390	72,940	\$92,579	7,796	149,566
5 Miles	303,620	151,136	\$95,786	13,921	243,841

CONTACT US

Tony Kennedy, CCIM
Senior Vice President
+1 314 630 4152
tony.kennedy@colliers.com

Carter Kennedy
Senior Vice President
+1 415 288 7846
carter.kennedy@colliers.com

Colliers
101 South Hanley Road
Suite 1400
St. Louis, MO 63105
+1 314 863 4447
colliers.com/stlouis



This document/email has been prepared by Colliers for advertising and general information only. Colliers makes no guarantees, representations or warranties of any kind, expressed or implied, regarding the information including, but not limited to, warranties of content, accuracy and reliability. Any interested party should undertake their own inquiries as to the accuracy of the information. Colliers excludes unequivocally all inferred or implied terms, conditions and warranties arising out of this document and excludes all liability for loss and damages arising there from. This publication is the copyrighted property of Colliers and /or its licensor(s). © 2025. All rights reserved. This communication is not intended to cause or induce breach of an existing listing agreement.