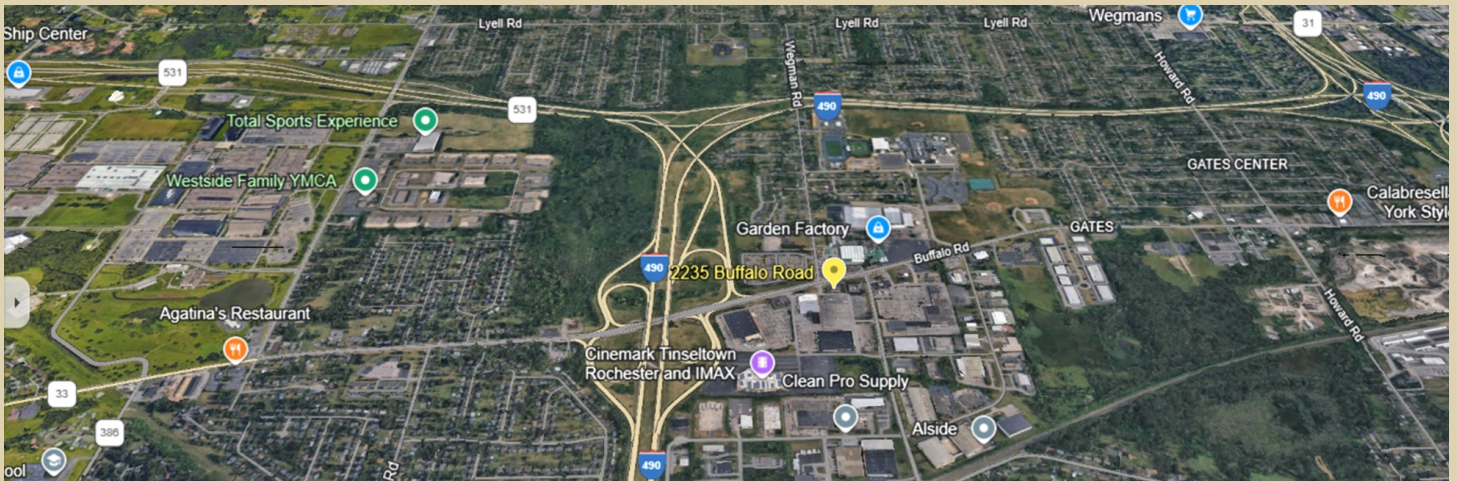
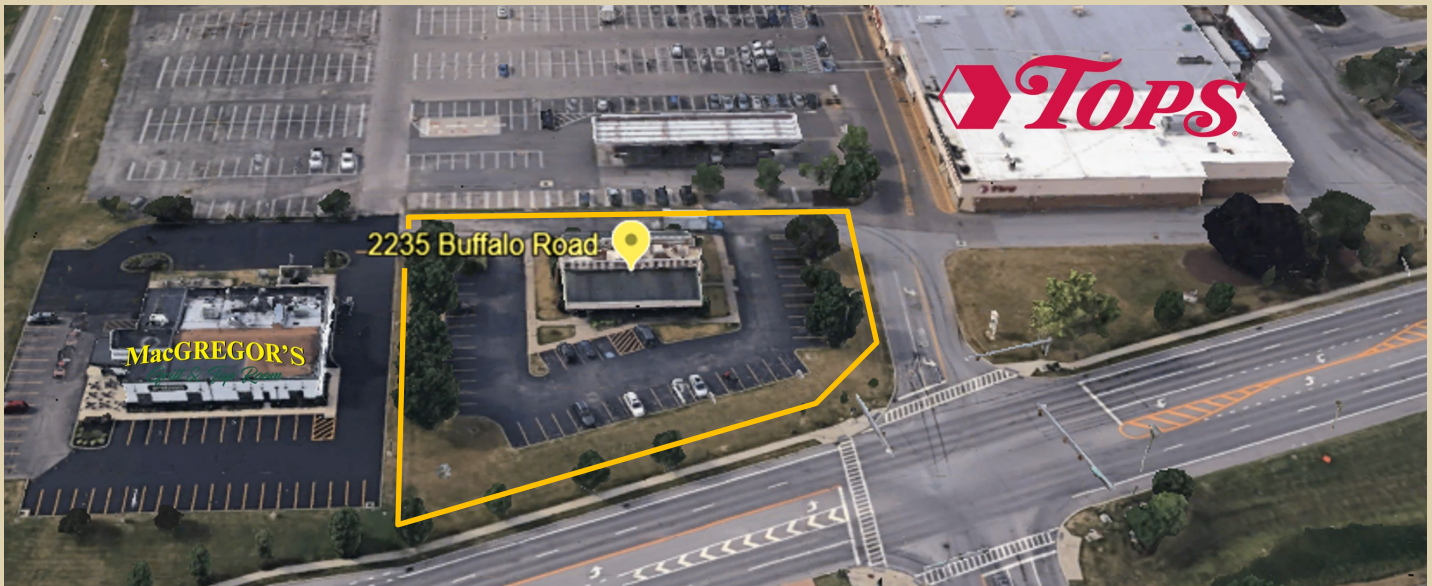


Redevelopment Site Available 2235 Buffalo Road

Price Reduced to: \$899,000



- Address: 2235 Buffalo Road, Town of Gates, NY
- Land Area: 1.33 Acres
- Building Size: Approximately 4,000 Square Feet
- Sale Price: ~~\$1,396,500~~ \$899,000
- Lease Price: ~~\$100,000~~ \$75,000 Annually NNN

For more information Contact Mark Rohlin 585-348-9170 x102

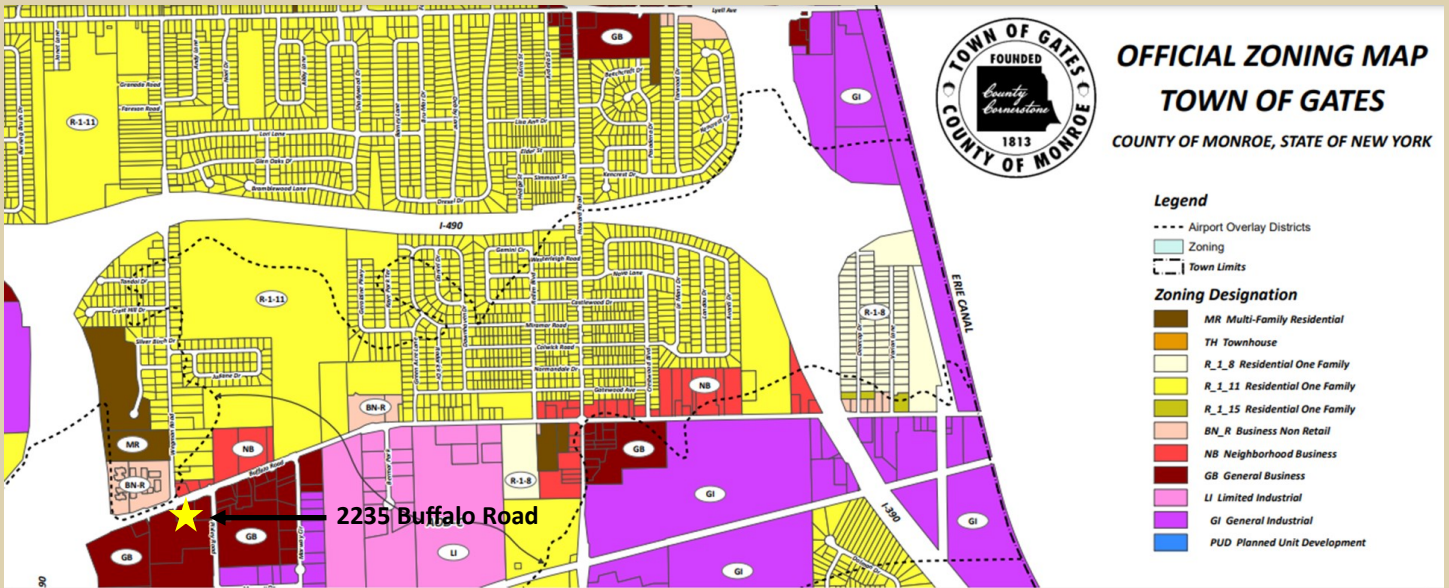
Commercial
Industrial
Investment
Real Estate

MISSION
COMMERCIAL REALTY

Brokerage
Leasing
Management
Consulting

Zoning

2235 Buffalo Road



Zoning information can be found at: <https://ecode360.com/12242998#12243823>

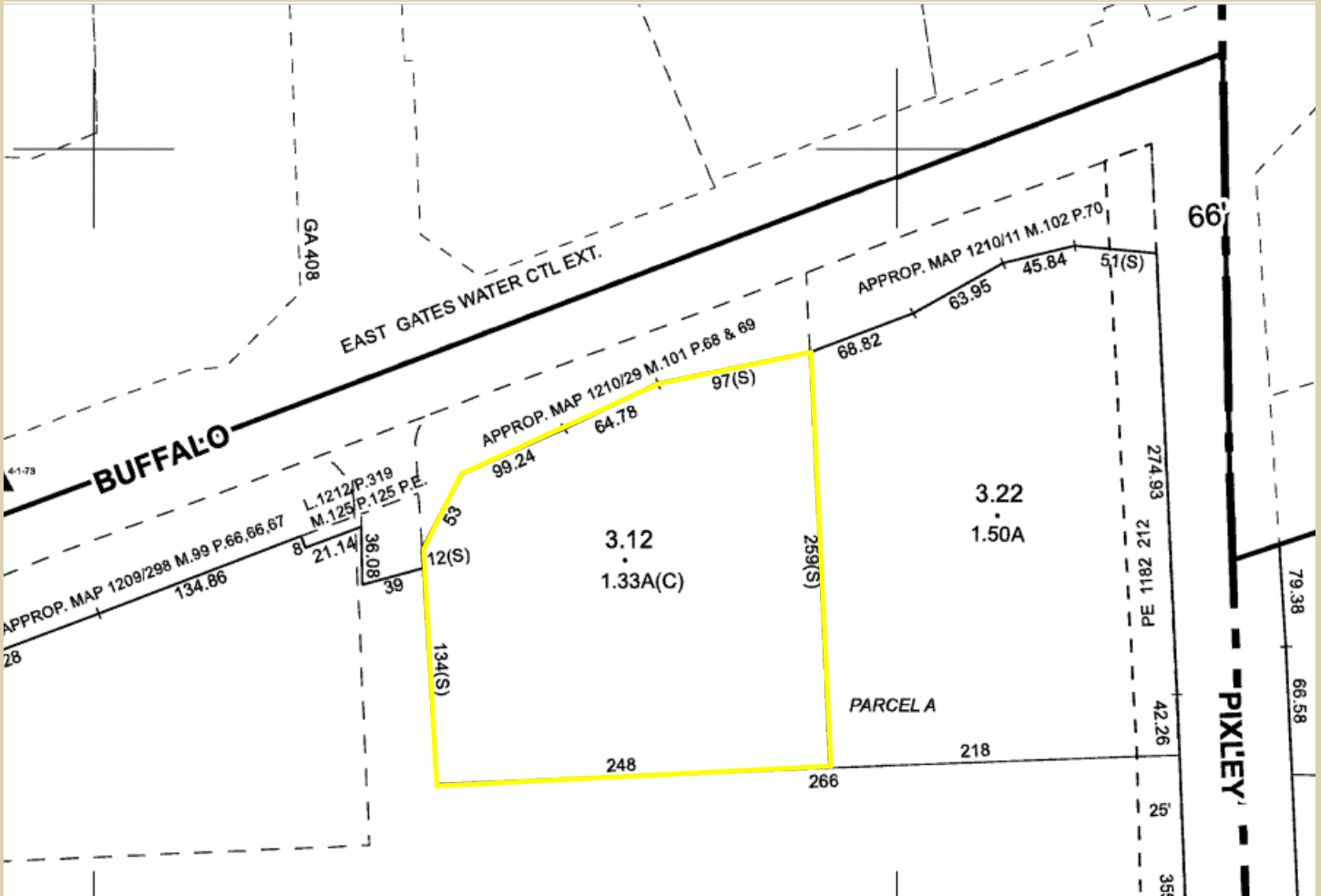
Commercial
Industrial
Investment
Real Estate

MISSION
COMMERCIAL REALTY

Brokerage
Leasing
Management
Consulting

Tax Map

2235 Buffalo Road



Commercial
Industrial
Investment
Real Estate

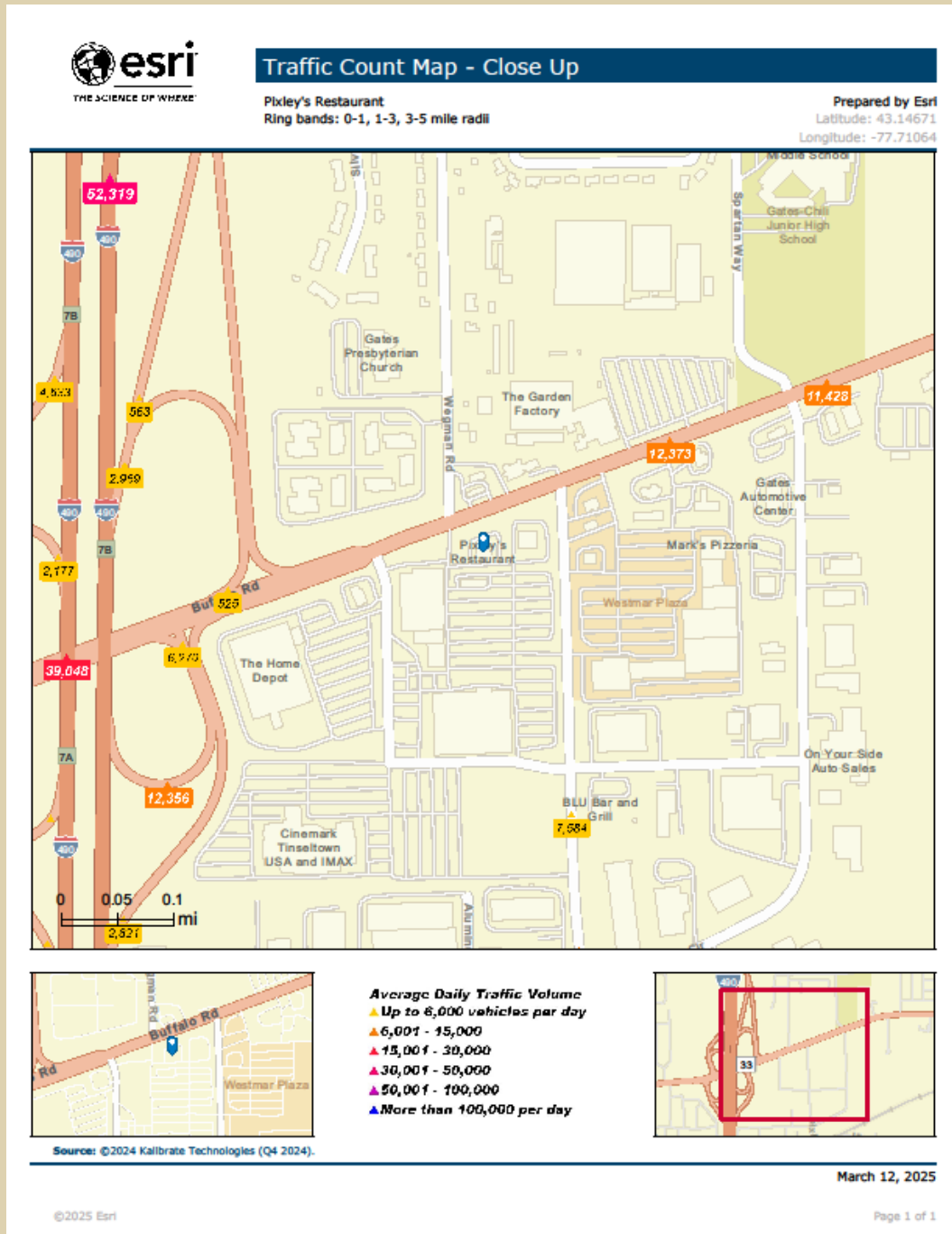
MISSION

COMMERCIAL REALTY

Brokerage
Leasing
Management
Consulting

Traffic Counts

2235 Buffalo Road



Commercial
Industrial
Investment
Real Estate

MISSION
COMMERCIAL REALTY

Brokerage
Leasing
Management
Consulting

Demographics

2235 Buffalo Road



Demographic and Income Comparison Profile

Pixley's Restaurant
Ring bands: 0-1, 1-3, 3-5 mile radii

Prepared by Esri
Latitude: 43.14671
Longitude: -77.71064

	0 - 1 mile	1 - 3 mile	3 - 5 mile
Census 2020 Summary			
Population	4,380	46,778	124,193
Households	1,887	19,885	46,730
Average Household Size	2.31	2.33	2.40
2024 Summary			
Population	4,334	45,768	122,792
Households	1,901	19,951	47,398
Families	1,175	11,952	25,931
Average Household Size	2.27	2.28	2.34
Owner Occupied Housing Units	1,655	13,652	20,664
Renter Occupied Housing Units	246	6,299	26,734
Median Age	48.1	42.8	32.7
Median Household Income	\$74,086	\$75,109	\$48,827
Average Household Income	\$95,080	\$91,040	\$70,674
2029 Summary			
Population	4,303	45,101	122,631
Households	1,940	20,259	48,707
Families	1,196	12,097	26,532
Average Household Size	2.20	2.21	2.28
Owner Occupied Housing Units	1,708	14,214	22,138
Renter Occupied Housing Units	232	6,045	26,569
Median Age	49.1	44.0	33.9
Median Household Income	\$81,637	\$82,642	\$54,101
Average Household Income	\$109,814	\$104,435	\$81,115
Trends: 2024-2029 Annual Rate			
Population	-0.14%	-0.29%	-0.03%
Households	0.41%	0.31%	0.55%
Families	0.35%	0.24%	0.46%
Owner Households	0.63%	0.81%	1.39%
Median Household Income	1.96%	1.93%	2.07%

Source: Esri forecasts for 2024 and 2029. U.S. Census Bureau 2020 in 2020 geographies.

March 12, 2025

©2025 Esri

Page 1 of 7

Commercial
Industrial
Investment
Real Estate

MISSION
COMMERCIAL REALTY

Brokerage
Leasing
Management
Consulting

Demographics

2235 Buffalo Road



Demographic and Income Comparison Profile

Pixley's Restaurant
Ring bands: 0-1, 1-3, 3-5 mile radii

Prepared by Esri
Latitude: 43.14671
Longitude: -77.71064

	0 - 1 mile		1 - 3 mile		3 - 5 mile	
2024 Households by Income	Number	Percent	Number	Percent	Number	Percent
<\$15,000	90	4.7%	1,398	7.0%	7,748	16.3%
\$15,000 - \$24,999	107	5.6%	1,218	6.1%	5,104	10.8%
\$25,000 - \$34,999	146	7.7%	1,415	7.1%	4,736	10.0%
\$35,000 - \$49,999	201	10.6%	2,376	11.9%	6,496	13.7%
\$50,000 - \$74,999	417	21.9%	3,548	17.8%	7,677	16.2%
\$75,000 - \$99,999	308	16.2%	3,342	16.8%	5,930	12.5%
\$100,000 - \$149,999	360	18.9%	3,871	19.4%	5,406	11.4%
\$150,000 - \$199,999	159	8.4%	1,815	9.1%	2,353	5.0%
\$200,000+	113	5.9%	968	4.9%	1,949	4.1%
Median Household Income	\$74,086		\$75,109		\$48,827	
Average Household Income	\$95,080		\$91,040		\$70,674	
Per Capita Income	\$41,301		\$39,884		\$27,891	
2029 Households by Income	Number	Percent	Number	Percent	Number	Percent
<\$15,000	83	4.3%	1,273	6.3%	7,622	15.6%
\$15,000 - \$24,999	82	4.2%	982	4.8%	4,415	9.1%
\$25,000 - \$34,999	120	6.2%	1,232	6.1%	4,431	9.1%
\$35,000 - \$49,999	183	9.4%	2,107	10.4%	6,146	12.6%
\$50,000 - \$74,999	403	20.8%	3,283	16.2%	7,794	16.0%
\$75,000 - \$99,999	303	15.6%	3,324	16.4%	6,346	13.0%
\$100,000 - \$149,999	402	20.7%	4,452	22.0%	6,322	13.0%
\$150,000 - \$199,999	214	11.0%	2,335	11.5%	3,050	6.3%
\$200,000+	152	7.8%	1,269	6.3%	2,581	5.3%
Median Household Income	\$81,637		\$82,642		\$54,101	
Average Household Income	\$109,814		\$104,435		\$81,115	
Per Capita Income	\$49,063		\$47,158		\$32,834	

Data Note: Income is expressed in current dollars.

Source: Esri forecasts for 2024 and 2029, U.S. Census Bureau 2020 in 2020 geographies.

March 12, 2025

©2025 Esri

Page 2 of 7

Commercial
Industrial
Investment
Real Estate

MISSION
COMMERCIAL REALTY

Brokerage
Leasing
Management
Consulting

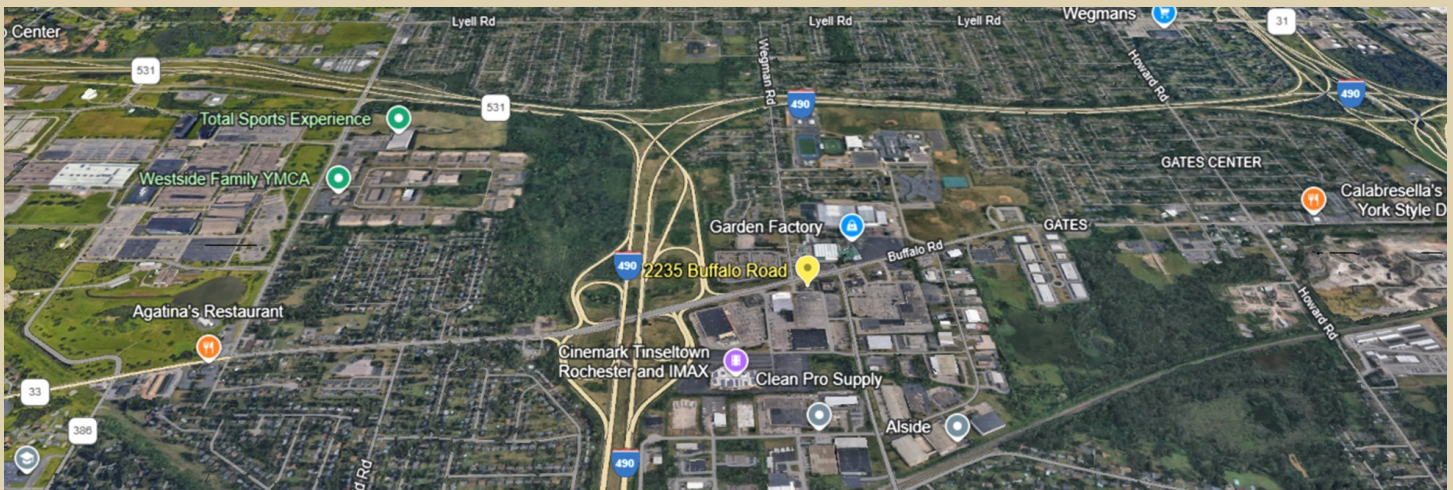
Aerials

2235 Buffalo Road

Facing South



Facing North



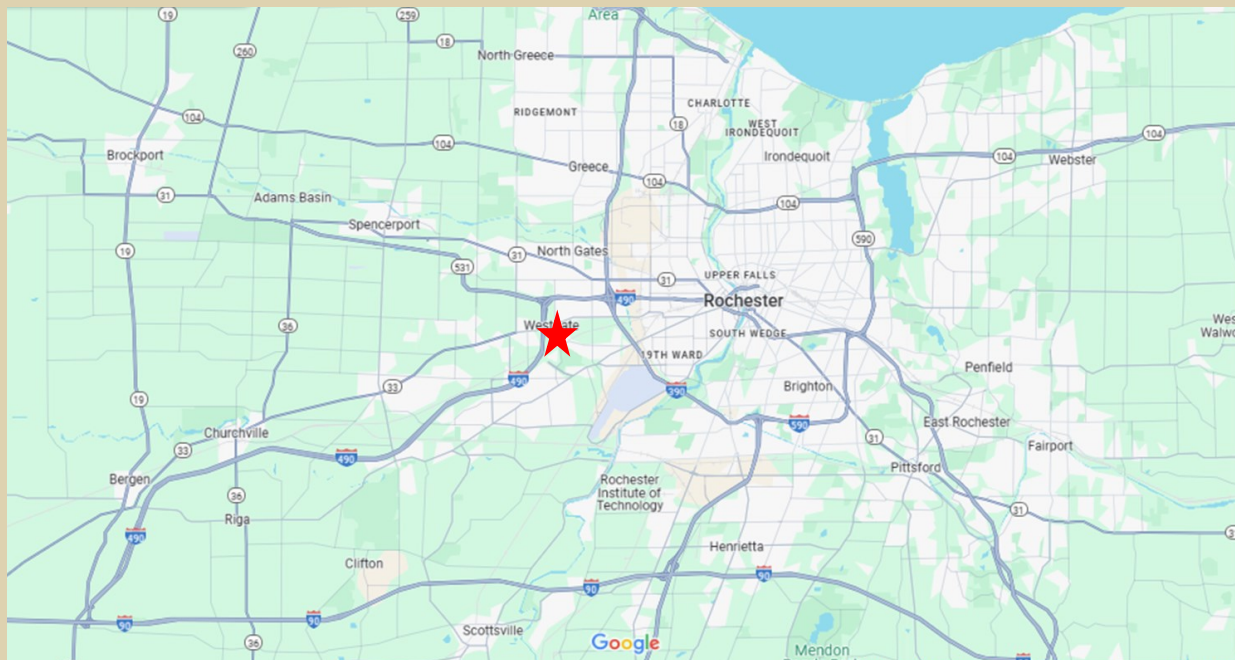
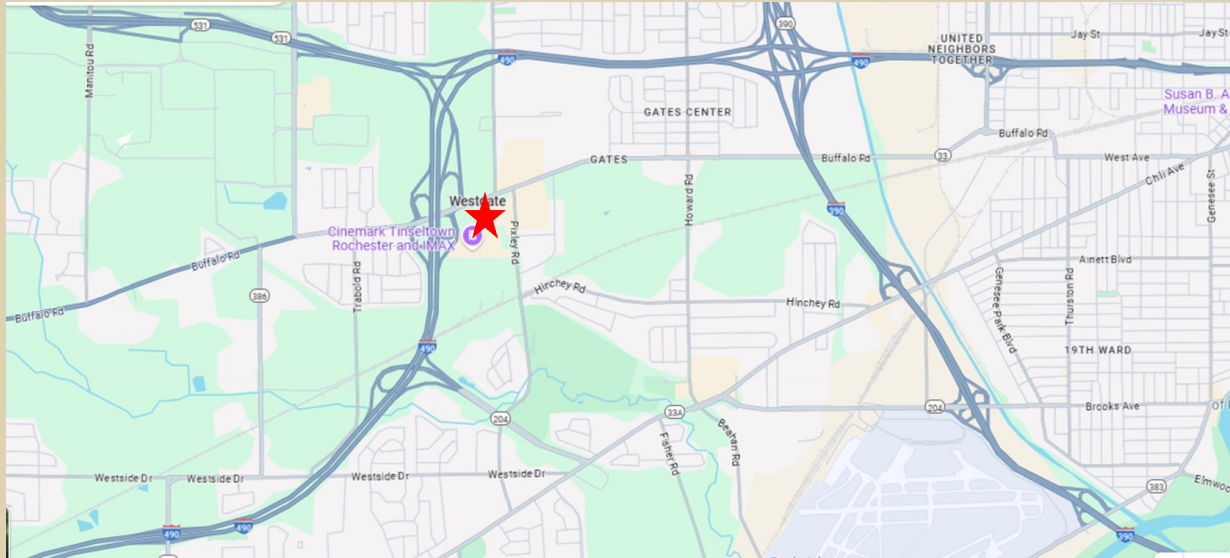
Commercial
Industrial
Investment
Real Estate

MISSION
COMMERCIAL REALTY

Brokerage
Leasing
Management
Consulting

Area Maps

2235 Buffalo Road



Commercial
Industrial
Investment
Real Estate

MISSION
COMMERCIAL REALTY

Brokerage
Leasing
Management
Consulting