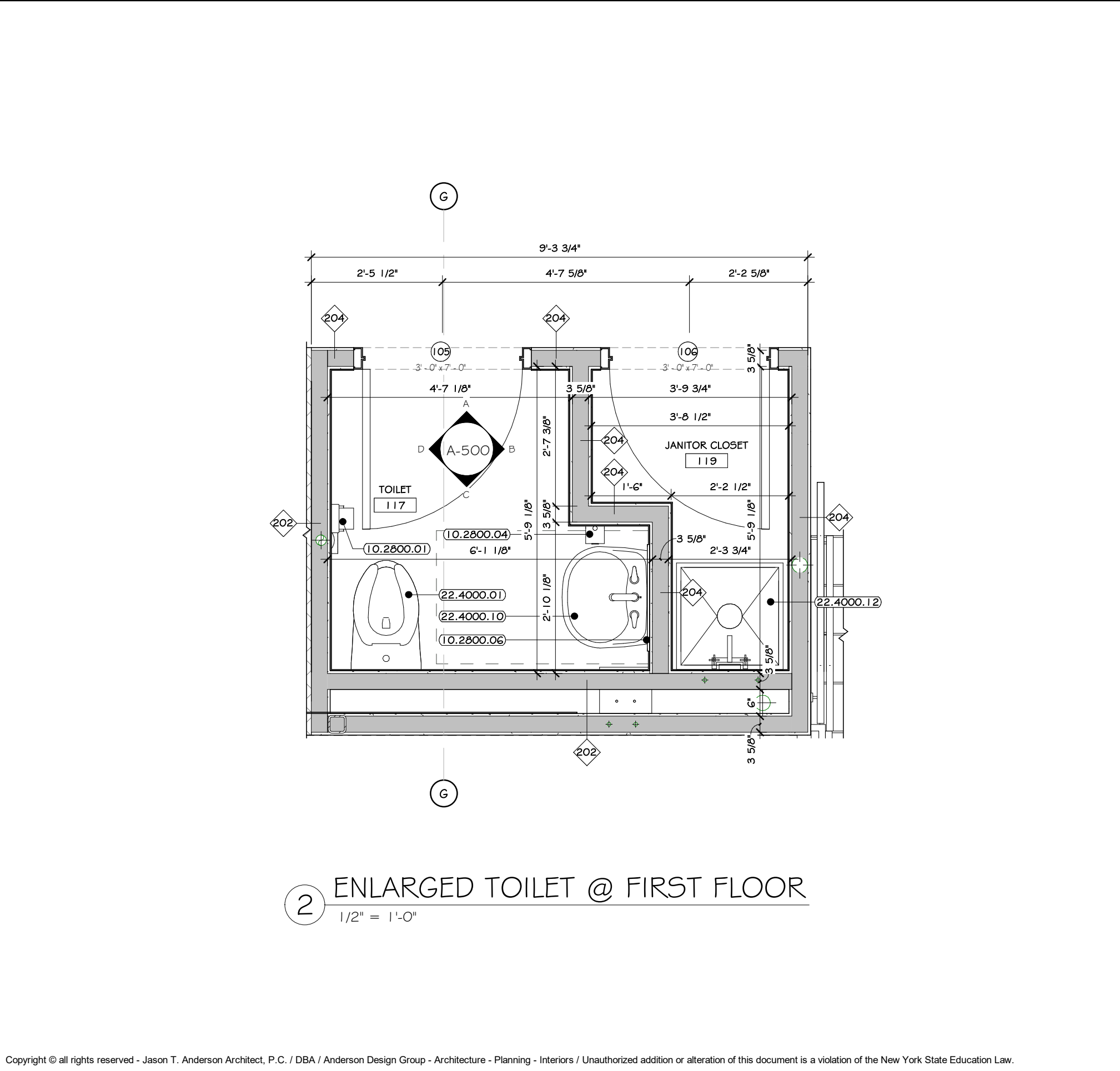
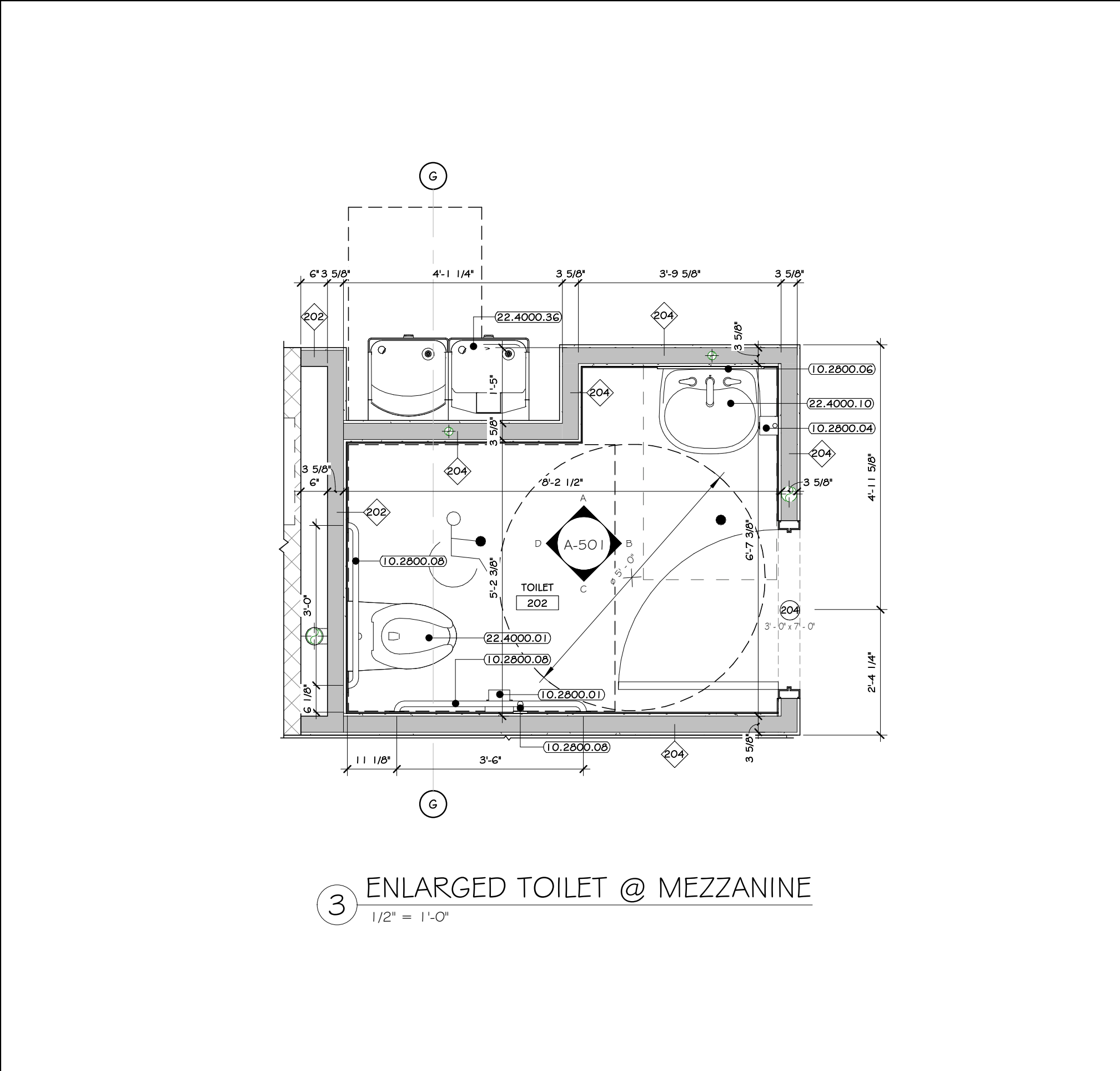


1 FIRST FLOOR PLAN
3/64" = 1'-0"

ADG DESIGN DISCLAIMER: SCHEMATIC DESIGN DOCUMENTS ARE PRELIMINARY AND ARE NOT TO BE RELIED UPON BY THE OWNER, OWNER'S REPRESENTATIVE, CONTRACTOR, ETC. THIS SCHEMATIC DESIGN DOCUMENT IS TO BE USED SOLELY AS A MEANS OF DETERMINING AN AGREED UPON LAYOUT/SCOPE OF WORK, AND AS A STARTING POINT TO PROCEED FURTHER WITH DESIGN DEVELOPMENT/ DOCUMENTATION. ONLY UPON THE COMPLETION OF FULL ARCHITECTURAL/ ENGINEERING DOCUMENTS CAN THE PROJECT CONSTRAINTS AND CODE REQUIREMENTS BE FULLY UNDERSTOOD, AND THE PROJECT BE BID TO GENERAL CONTRACTORS FOR A FIXED PRICE/ BUDGET.



2 ENLARGED TOILET @ FIRST FLOOR
1/2" = 1'-0"



3 ENLARGED TOILET @ MEZZANINE
1/2" = 1'-0"

KEY NOTES

- 05.3000.21 8" THICK CONCRETE WALL, SEE STRUCTURAL DRAWINGS.
- 05.3000.22 12" THICK CONCRETE WALL, SEE STRUCTURAL DRAWINGS.
- 05.3000.23 12" THICK CONCRETE WALL, SEE STRUCTURAL DRAWINGS.
- 05.3000.24 8" THICK CONCRETE WALL, SEE STRUCTURAL DRAWINGS.
- 05.3000.25 8" THICK CONCRETE WALL, SEE STRUCTURAL DRAWINGS.
- 05.3000.26 8" THICK CONCRETE WALL, SEE STRUCTURAL DRAWINGS.
- 05.3000.27 8" THICK CONCRETE WALL, SEE STRUCTURAL DRAWINGS.
- 05.3000.28 8" THICK CONCRETE WALL, SEE STRUCTURAL DRAWINGS.
- 05.3000.29 8" THICK CONCRETE WALL, SEE STRUCTURAL DRAWINGS.
- 05.3000.30 8" THICK CONCRETE WALL, SEE STRUCTURAL DRAWINGS.
- 05.3000.31 8" THICK CONCRETE WALL, SEE STRUCTURAL DRAWINGS.
- 05.3000.32 8" THICK CONCRETE WALL, SEE STRUCTURAL DRAWINGS.
- 05.3000.33 8" THICK CONCRETE WALL, SEE STRUCTURAL DRAWINGS.
- 05.3000.34 8" THICK CONCRETE WALL, SEE STRUCTURAL DRAWINGS.
- 05.3000.35 8" THICK CONCRETE WALL, SEE STRUCTURAL DRAWINGS.
- 05.3000.36 8" THICK CONCRETE WALL, SEE STRUCTURAL DRAWINGS.
- 05.3000.37 8" THICK CONCRETE WALL, SEE STRUCTURAL DRAWINGS.
- 05.3000.38 8" THICK CONCRETE WALL, SEE STRUCTURAL DRAWINGS.
- 05.3000.39 8" THICK CONCRETE WALL, SEE STRUCTURAL DRAWINGS.
- 05.3000.40 8" THICK CONCRETE WALL, SEE STRUCTURAL DRAWINGS.
- 05.3000.41 8" THICK CONCRETE WALL, SEE STRUCTURAL DRAWINGS.
- 05.3000.42 8" THICK CONCRETE WALL, SEE STRUCTURAL DRAWINGS.
- 05.3000.43 8" THICK CONCRETE WALL, SEE STRUCTURAL DRAWINGS.
- 05.3000.44 8" THICK CONCRETE WALL, SEE STRUCTURAL DRAWINGS.
- 05.3000.45 8" THICK CONCRETE WALL, SEE STRUCTURAL DRAWINGS.
- 05.3000.46 8" THICK CONCRETE WALL, SEE STRUCTURAL DRAWINGS.
- 05.3000.47 8" THICK CONCRETE WALL, SEE STRUCTURAL DRAWINGS.
- 05.3000.48 8" THICK CONCRETE WALL, SEE STRUCTURAL DRAWINGS.
- 05.3000.49 8" THICK CONCRETE WALL, SEE STRUCTURAL DRAWINGS.
- 05.3000.50 8" THICK CONCRETE WALL, SEE STRUCTURAL DRAWINGS.
- 05.3000.51 8" THICK CONCRETE WALL, SEE STRUCTURAL DRAWINGS.
- 05.3000.52 8" THICK CONCRETE WALL, SEE STRUCTURAL DRAWINGS.
- 05.3000.53 8" THICK CONCRETE WALL, SEE STRUCTURAL DRAWINGS.
- 05.3000.54 8" THICK CONCRETE WALL, SEE STRUCTURAL DRAWINGS.
- 05.3000.55 8" THICK CONCRETE WALL, SEE STRUCTURAL DRAWINGS.
- 05.3000.56 8" THICK CONCRETE WALL, SEE STRUCTURAL DRAWINGS.
- 05.3000.57 8" THICK CONCRETE WALL, SEE STRUCTURAL DRAWINGS.
- 05.3000.58 8" THICK CONCRETE WALL, SEE STRUCTURAL DRAWINGS.
- 05.3000.59 8" THICK CONCRETE WALL, SEE STRUCTURAL DRAWINGS.
- 05.3000.60 8" THICK CONCRETE WALL, SEE STRUCTURAL DRAWINGS.
- 05.3000.61 8" THICK CONCRETE WALL, SEE STRUCTURAL DRAWINGS.
- 05.3000.62 8" THICK CONCRETE WALL, SEE STRUCTURAL DRAWINGS.
- 05.3000.63 8" THICK CONCRETE WALL, SEE STRUCTURAL DRAWINGS.
- 05.3000.64 8" THICK CONCRETE WALL, SEE STRUCTURAL DRAWINGS.
- 05.3000.65 8" THICK CONCRETE WALL, SEE STRUCTURAL DRAWINGS.
- 05.3000.66 8" THICK CONCRETE WALL, SEE STRUCTURAL DRAWINGS.
- 05.3000.67 8" THICK CONCRETE WALL, SEE STRUCTURAL DRAWINGS.
- 05.3000.68 8" THICK CONCRETE WALL, SEE STRUCTURAL DRAWINGS.
- 05.3000.69 8" THICK CONCRETE WALL, SEE STRUCTURAL DRAWINGS.
- 05.3000.70 8" THICK CONCRETE WALL, SEE STRUCTURAL DRAWINGS.
- 05.3000.71 8" THICK CONCRETE WALL, SEE STRUCTURAL DRAWINGS.
- 05.3000.72 8" THICK CONCRETE WALL, SEE STRUCTURAL DRAWINGS.
- 05.3000.73 8" THICK CONCRETE WALL, SEE STRUCTURAL DRAWINGS.
- 05.3000.74 8" THICK CONCRETE WALL, SEE STRUCTURAL DRAWINGS.
- 05.3000.75 8" THICK CONCRETE WALL, SEE STRUCTURAL DRAWINGS.
- 05.3000.76 8" THICK CONCRETE WALL, SEE STRUCTURAL DRAWINGS.
- 05.3000.77 8" THICK CONCRETE WALL, SEE STRUCTURAL DRAWINGS.
- 05.3000.78 8" THICK CONCRETE WALL, SEE STRUCTURAL DRAWINGS.
- 05.3000.79 8" THICK CONCRETE WALL, SEE STRUCTURAL DRAWINGS.
- 05.3000.80 8" THICK CONCRETE WALL, SEE STRUCTURAL DRAWINGS.
- 05.3000.81 8" THICK CONCRETE WALL, SEE STRUCTURAL DRAWINGS.
- 05.3000.82 8" THICK CONCRETE WALL, SEE STRUCTURAL DRAWINGS.
- 05.3000.83 8" THICK CONCRETE WALL, SEE STRUCTURAL DRAWINGS.
- 05.3000.84 8" THICK CONCRETE WALL, SEE STRUCTURAL DRAWINGS.
- 05.3000.85 8" THICK CONCRETE WALL, SEE STRUCTURAL DRAWINGS.
- 05.3000.86 8" THICK CONCRETE WALL, SEE STRUCTURAL DRAWINGS.
- 05.3000.87 8" THICK CONCRETE WALL, SEE STRUCTURAL DRAWINGS.
- 05.3000.88 8" THICK CONCRETE WALL, SEE STRUCTURAL DRAWINGS.
- 05.3000.89 8" THICK CONCRETE WALL, SEE STRUCTURAL DRAWINGS.
- 05.3000.90 8" THICK CONCRETE WALL, SEE STRUCTURAL DRAWINGS.
- 05.3000.91 8" THICK CONCRETE WALL, SEE STRUCTURAL DRAWINGS.
- 05.3000.92 8" THICK CONCRETE WALL, SEE STRUCTURAL DRAWINGS.
- 05.3000.93 8" THICK CONCRETE WALL, SEE STRUCTURAL DRAWINGS.
- 05.3000.94 8" THICK CONCRETE WALL, SEE STRUCTURAL DRAWINGS.
- 05.3000.95 8" THICK CONCRETE WALL, SEE STRUCTURAL DRAWINGS.
- 05.3000.96 8" THICK CONCRETE WALL, SEE STRUCTURAL DRAWINGS.
- 05.3000.97 8" THICK CONCRETE WALL, SEE STRUCTURAL DRAWINGS.
- 05.3000.98 8" THICK CONCRETE WALL, SEE STRUCTURAL DRAWINGS.
- 05.3000.99 8" THICK CONCRETE WALL, SEE STRUCTURAL DRAWINGS.
- 05.3000.100 8" THICK CONCRETE WALL, SEE STRUCTURAL DRAWINGS.

CONSTRUCTION NOTES

- ALL DIMENSIONS ARE TO ROUGH FRAMING.
- NOTE: NOT ALL CONSTRUCTION NOTES MAY BE SPECIFIC TO THIS DRAWING.
- NOTE: F.F. ELEVATION 477' ON CIVIL DWGS. = F.F. ELEV. 100'-0" ON ARCH. STRUCT. & MEP DWGS.
- NOTE: M.F.F. ELEVATION 211' ON CIVIL DWGS. = M.F.F. ELEV. 100'-0" ON ARCH. STRUCT. & MEP DWGS. REFERS TO FIRST FLOOR SLAB.
- F.F. ELEVATIONS:
 - MAIN FLOOR: 100'-0"
 - MEZZANINE: 120'-0"
- GENERAL CONTRACTOR TO VERIFY ALL ROUGH OPENING SIZES WITH RESPECTIVE MANUFACTURERS (DOOR/WINDOW/VERTICAL) PRIOR TO ORDERING AND LAYING OUT MASONRY AND CONCRETE OPENINGS, ORDERING PRECAST, ETC.
- SEE LIFE SAFETY PLANS FOR LOCATIONS OF FIRE EXTINGUISHERS. GC TO CONSULT WITH LOCAL A.U.I. PRIOR TO COORDINATION. TO CONFIRM ACCEPTANCE OF LOCATIONS BY FIRE MARSHAL. WALL HANG SPOCCED FIRE EXTINGUISHERS ARE TO BE PROVIDED AT ALL INDUSTRIAL LOCATIONS. PROVIDE OPENING AND BLOCKING WITHIN FRAMING FOR WALL CORNERS AND MOUNTING HORIZONTALS.
- FIRE ALARM IS TO BE COORDINATED WITH OWNER. SEE ELECTRICAL DRAWINGS AND SPECIFICATIONS.
- CONSTRUCTION TO BEGIN ONLY AFTER ALL BUILDING COMPONENTS HAVE BEEN DESIGNED AND CONFIRMED.
- IT SHALL BE THE CONTRACTOR'S RESPONSIBILITY TO PERSONALLY INSPECT THE WORK IN PROGRESS, AND AS A SINGLE ASSURING HIMSELF THAT THE WORK ON ANY OR ALL OR PART OF THE PROJECT IS READY FOR PERIODIC AND/OR FINAL REVIEW BEFORE CALLING UPON THE ARCHITECT AND OWNER TO MAKE THEIR SITE/PROJECT OBSERVATION VISIT OF THE WORK.
- THE CONTRACTOR SHALL BE SOLELY RESPONSIBLE FOR CONSTRUCTION MEANS, METHOD, TECHNIQUES, SEQUENCES AND PROCEDURES REQUIRED FOR SAFE EXECUTION AND COMPLETION OF WORK, AND FOR OBTAINING, MAINTAINING AND SUPERVISING ALL SAFETY PRECAUTIONS AND PROGRAMS IN CONNECTION WITH THE WORK.
- CLEARANCE ENVELOPE IS AN AREA DEDICATED TO RACKING OR EQUIPMENT AND CLEARANCES REQUIRED FOR ANY VEHICLES OR EQUIPMENT TO PASS THROUGH, UNLESS OTHERWISE NOTED, NO STRUCTURAL, MECHANICAL, ELECTRICAL OR ARCHITECTURAL ASPECTS OF THE BUILDING INCLUDING BUT NOT LIMITED TO FIRE PROTECTION, SMOKE SCREENS, DRAFT CURTAINS, ELECTRICAL CONDUIT, OVERHEAD DOORS AND TRACKS, ETC. SHALL BE ABOVE OR OUTSIDE THE REQUIRED LIMITS AS INDICATED BY THE CLEARANCE ENVELOPE SHOWN ON THE DRAWINGS.
- CLEARANCE ENVELOPE WITH INDUSTRIAL WAREHOUSE AREAS: A 30'-0" CLEAR ENVELOPE HEIGHT MUST BE MAINTAINED. NOTHING IS PERMITTED TO HANG OR BE MOUNTED BELOW THESE HEIGHTS IN THESE RESPECTIVE AREAS.
- EXTERIOR FACADE IS TO BE POWER WASHED PRIOR TO PAINTING AND SEALING.
- STRUCTURAL DETAILS AND SPECIFICATIONS OF ANY FRAMING MEMBERS, BRACING, ETC. SUPERSEDE THE ARCHITECTURAL DRAWINGS.
- COLUMN LINES (A, N, I) AND S1 REPRESENT THE OUTSIDE EDGE OF PRECAST WALL DOOR-STRUCTURE LINE.
- PRECAST MANUFACTURER: REVIEW ALL MEP FF BUILDING DRAWINGS AND NOTE ALL OPENINGS, ROOF MOUNTED EQUIPMENT, SIDE WALL MOUNTED EQUIPMENT/ LOUVERS, LIGHT FIXTURE LOCATIONS, MISTING SYSTEM EQUIPMENT, ETC.
- ALL OVERHEAD DOORS ARE SHOWN WITH THEIR OPEN POSITION DASHED IN ABOVE. NO SIGNAGE OR LIGHTING IS TO BE MOUNTED TO AS TO INTERFERE WITH DOOR OPERATION. ALL MEP SYSTEMS, INCLUDING THOSE MOUNTED AT THE CEILING ABOVE, ARE TO BE MOUNTED BETWEEN DOORS.
- SEE STRUCTURAL, MECHANICAL, ELECTRICAL, PLUMBING, FIRE PROTECTION, FIRE ALARM, AND IT/AV DRAWINGS AND SPECIFICATIONS FOR COORDINATION OF ALL RELATED ITEMS, INCLUDING UNDERGROUND WORK.
- THREE EMPTY 4" CONDUIT WITH FULL TIE TO BE PROVIDED FROM THE ELECTRICAL PANELS TO THE FUTURE OFFICE AREA.
- SEE PLUMBING DRAWINGS FOR EXTENT OF UNDERSLAB PLUMBING TO THE FUTURE OFFICE AREA. UNDERSLAB PLUMBING IS TO BE CAPPED OFF FOR FUTURE USE AND DEVELOPMENT BY TENANT.
- SEE CIVIL DRAWINGS AND SPECIFICATIONS FOR LOCATIONS OF FIRE PROTECTION UTILITIES BEYOND 5'-0" OUTSIDE OF THE BUILDING FOOTPRINT.
- MAIL, 2" X 2" IMPROVED AREA REQUIRED AT EACH EXIT DOOR, G.C. TO PROVIDE EXTERIOR CONCRETE PADS IF ASPHALT IS NOT PROVIDED FOR ON CIVIL DRAWINGS. SEE STRUCTURAL AND CIVIL DRAWINGS AND SPECIFICATIONS.
- EQUIPMENT ANCHOR RACKING DRAWINGS ARE TO BE PROVIDED BY TENANT UNDER SEPARATE COVER DIRECTLY BY THE TENANT. AS PART OF A SEPARATE PERMIT APPLICATION. GC TO MAINTAIN A CLEAR ENVELOPE FOR EQUIPMENT/ANCHORS. ONCE EQUIPMENT DRAWINGS ARE RELEASED, CHANGES MAY BE MADE TO LIFE SAFETY COMPONENTS SO AS TO BE COORDINATED WITH EQUIPMENT LAYOUT AND COMPLY WITH ALL APPLICABLE LOCAL AND STATE CODES.

WALL LEGEND:

- MFL STUD WALL
- FIRE RATED WALL
- PRECAST WALL

DOOR LEGEND:

- STOREFRONT TAG @ FIRST FL. LEVEL
- PERSONNEL DOOR TAG @ FIRST FL. LEVEL
- PERSONNEL DOOR TAG @ SECOND FL. LEVEL

PROJECT

100% CONSTRUCTION DOCUMENTS

REVISIONS:

NUM.	DATE	DESCRIPTION

ANDERSON DESIGN GROUP ARCHITECTURE PLANNING INTERIORS

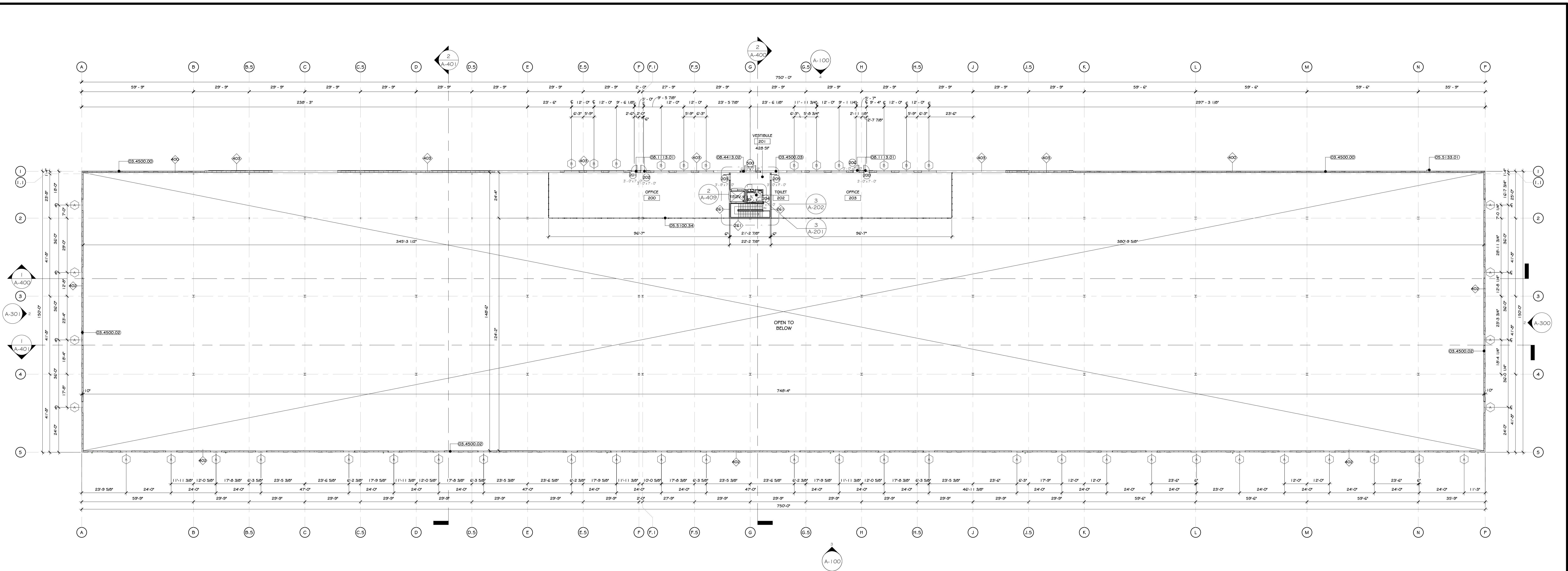
25 WALLKILL AVE • MONTICELLO • NY 12549
 O. 845.294.2724 | F. 888.305.6442
 WWW.ADGARCHITECT.COM
 CONTACT@ADGARCHITECT.COM

Project: **ICS 37 POLICE DR MULTI-TENANT WAREHOUSE**
 37 POLICE DRIVE, VILLAGE OF GOSHEN, NY 10924
 NEW YORK

Drawing Name: **FIRST FLOOR PLAN**

Drawn: IDEA Scale: AS NOTED Project: 22111 Date: 06/02/22

Drawing Number: **A-201**



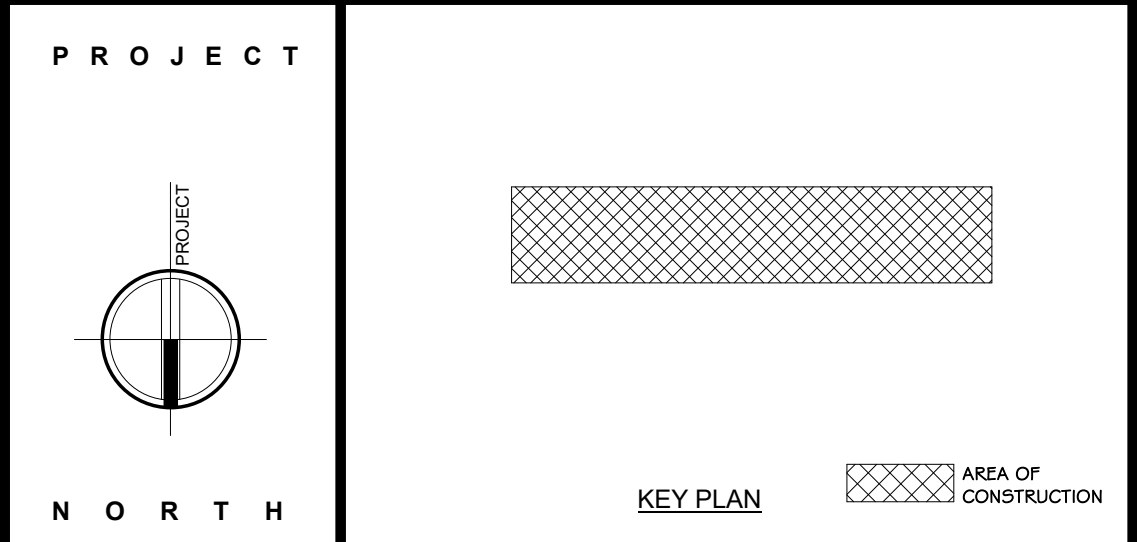
1 MEZZANINE FLOOR PLAN
3/8" = 1'-0"

ADG DESIGN DISCLAIMER: SCHEMATIC DESIGN DOCUMENTS ARE PRELIMINARY AND ARE NOT TO BE RELIED UPON BY THE OWNER, OWNER'S REPRESENTATIVE, CONTRACTOR, ETC. THIS SCHEMATIC DESIGN DOCUMENT IS TO BE USED SOLELY AS A MEANS OF DETERMINING AN AGREED UPON LAYOUT/ SCOPE OF WORK AND AS A STARTING POINT TO PROCEED FURTHER WITH DESIGN DEVELOPMENT/ DOCUMENTATION. ONLY UPON THE COMPLETION OF FULL ARCHITECTURAL/ ENGINEERING DOCUMENTS CAN THE PROJECT CONSTRAINTS AND CODE REQUIREMENTS BE FULLY UNDERSTOOD, AND THE PROJECT BE BID TO GENERAL CONTRACTORS FOR A FIXED PRICE/ BUDGET.

KEY NOTES	
03.3000.22	1" OF THICK CONCRETE WALL, SEE STRUCTURAL DRAWINGS.
03.4500.00	PRECAST 2" INSULATED WALL PANEL.
03.4500.03	PRECAST 1" INSULATED WALL PANEL.
03.5100.01	PANORAMIC FRAME GLASS WALL.
03.5133.01	FIXED ALUMINUM ACCESS LADDER, SEE SPEC.
03.1113.01	EXTERIOR YELLOW METAL INSULATED DOOR, SEE SPEC.
03.4112.13	AUTO SHOWERROOM ALUMINUM FRAMED DOOR PACKAGE, MEDIUM STYLE
03.4413.02	GLAZED ALUMINUM CURTAIN WALL 2'-10" (3'-0" GLASS) OUTSIDE GLAZED PRESSURE PLATE FORM. SYSTEM DEPTH: 4"

CONSTRUCTION NOTES

- ALL DIMENSIONS ARE TO ROUGH FRAMING.
- NOTE: NOT ALL CONSTRUCTION NOTES MAY BE SPECIFIC TO THIS DRAWING.
- NOTE: F.F. ELEVATION: 477' ON CIVIL DWGS. = F.F. ELEV. 100'-0" ON ARCH. / STRUCT. & MECH DWGS.
- NOTE: F.F. ELEVATION: 477' ON ARCH. / STRUCT. & MECH DWGS REFERS TO FIRST FLOOR SLAB.
- F.F. ELEVATIONS:
 - MAIN FLOOR: 100'-0"
 - MEZZANINE: 100'-0"
- GENERAL CONTRACTOR TO VERIFY ALL ROUGH OPENING SIZES WITH RESPECTIVE MANUFACTURERS (DOOR/WINDOW/VALVE/ETC.) PRIOR TO ORDERING AND LAYING OUT MASONRY AND CONCRETE OPENINGS, ORDERING PRECAST, ETC.
- SEE LIFT SAFETY PLANS FOR LOCATIONS OF FIRE EXTINGUISHERS. GC TO CONSULT WITH LOCAL AFD, PRIOR TO CO INSPECTION. TO OBTAIN ACCEPTANCE OF LOCATIONS BY FIRE MARSHAL. WALL HANG EXPOSED FIRE EXTINGUISHERS ARE TO BE PROVIDED AT ALL INDUSTRIAL LOCATIONS. PROVIDE OPENING AND BLOCKING WITHIN FRAMING FOR WALL CABINETS AND MOUNTING HARDWARE.
- FIRE ALARMS TO BE COORDINATED WITH OWNER. SEE ELECTRICAL DRAWINGS AND SPECIFICATIONS.
- CONSTRUCTION TO BEGIN ONLY AFTER ALL BUILDING COMPONENTS HAVE BEEN DESIGNED AND CONFIRMED. IT SHALL BE THE CONTRACTOR'S RESPONSIBILITY TO PERSONALLY INSPECT THE WORK IN PROGRESS, AND AS A WHOLE, ASSURING TIMELY THAT THE WORK ON ANY OR ALL PARTS OF THE PROJECT IS READY FOR PERIODIC AND/OR FINAL REVIEW, BEFORE CALLING UPON THE ARCHITECT AND OWNER TO MAKE THEIR SITE/PROJECT OBSERVATION VISIT OF THE WORK.
- THE CONTRACTOR SHALL BE SOLELY RESPONSIBLE FOR CONSTRUCTION MEANS, METHOD, TECHNIQUES, SEQUENCING AND PROCEEDURES REQUIRED FOR SAFE EXECUTION AND COMPLETION OF WORK, AND FOR NOTIFYING, MAINTAINING AND SUPERVISING ALL SAFETY PRECAUTIONS AND PROGRAMS IN CONNECTION WITH THE WORK.
- CLEARANCE ENVELOPE IS AN AREA DESIGNATED FOR RAILINGS OR EQUIPMENT AND CLEARANCES REQUIRED FOR ANY VEHICLES OR EQUIPMENT TO PASS THROUGH. UNLESS OTHERWISE NOTED, NO STRUCTURAL, MECHANICAL, ELECTRICAL OR ARCHITECTURAL SERVICES TO THE BUILDING INCLUDING BUT NOT LIMITED TO FIRE PROTECTION, SMOKE SCREENS, DRAFT CURTAINS, ELECTRICAL CONDUIT, OVERHEAD DOORS AND TRACKS, ETC.) SHALL BE MOVED OR OUTSIDE THE REQUIRED LIMITS AS INDICATED BY THE CLEARANCE ENVELOPE SHOWN ON THE DRAWINGS.
- CLEARANCE ENVELOPE WITHIN INDUSTRIAL WAREHOUSE AREAS: A 36'-0" CLEAR ENVELOPE HEIGHT MUST BE MAINTAINED. NOTHING IS PERMITTED TO HANG OR BE MOUNTED BELOW THESE HEIGHTS IN THESE RESPECTIVE AREAS.
- EXTERIOR FACADE IS TO BE POWER WASHED PRIOR TO PAINTING AND SEALING.
- STRUCTURAL DETAILS AND SPECIFICATIONS OF ANY FRAMING MEMBERS, BRACING, ETC. SUPERSEDE THE ARCHITECTURAL DRAWINGS.
- COLUMN LINES (A, N, I) AND (5) REPRESENT THE OUTSIDE EDGE OF PRECAST WALL OR STRUCTURE UNIT.
- PRECAST MANUFACTURER REVIEW DRAW ALL AS-BUILT FROM BUILDING DRAWINGS AND NOTE ALL OPENINGS, ROOF MOUNTED EQUIPMENT, SIDE WALL MOUNTED EQUIPMENT (LOUVERS, LIGHT FIXTURE LOCATIONS, MISTING SYSTEM EQUIPMENT, ETC.)
- ALL OVERHEAD DOORS ARE SHOWN WITH THEIR OPEN POSITION DASHED IN ABOVE. NO SIGNAGE OR LIGHTING IS TO BE MOUNTED TO AS TO INTERFERE WITH DOOR OPERATION. ALL MEV SYSTEMS, INCLUDING THOSE MOUNTED AT THE CEILING ABOVE, ARE TO BE MOUNTED BETWEEN DOORS.
- SEE STRUCTURAL, MECHANICAL, ELECTRICAL, PLUMBING, FIRE PROTECTION, FIRE ALARM, AND IT/AV DRAWINGS AND SPECIFICATIONS FOR COORDINATION OF ALL RELATED ITEMS, INCLUDING UNDERGROUND WORK.
- THREE EMPTY 4" CONDUIT WITH FULL TIE TO BE PROVIDED FROM THE ELECTRICAL PANELS TO THE FUTURE OFFICE AREA.
- SEE PLUMBING DRAWINGS FOR EXTENT OF UNDERSLAB PLUMBING TO THE FUTURE OFFICE AREA. UNDERSLAB PLUMBING IS TO BE CAPPED OFF FOR FUTURE USE AND DEVELOPMENT BY TENANT.
- SEE CIVIL DRAWINGS AND SPECIFICATIONS FOR ALL SITE IMPROVEMENTS AND INCOMING UTILITIES BEYOND 5'-0" OUTSIDE OF THE BUILDING FOOTPRINT.
- 2" X 2" INTERFERING AREA REQUIRED AT EACH EXIT DOOR, G.C. TO PROVIDE EXTERIOR CONCRETE PADS IF ASPHALT IS NOT PROVIDED FOR ON CIVIL DRAWINGS. SEE STRUCTURAL AND CIVIL DRAWINGS AND SPECIFICATIONS.
- EQUIPMENT AND/OR RACKING DRAWINGS ARE TO BE PROVIDED BY TENANT UNDER SEPARATE COVER DIRECTLY BY THE TENANT. AS PART OF A SEPARATE PERMIT APPLICATION GO TO MAINTAIN A CLEAR ENVELOPE FOR EQUIPMENT/RACKING. ONCE EQUIPMENT DRAWINGS ARE RELEASED, CHANGES MAY BE MADE TO LIFE SAFETY COMPONENTS SO AS TO BE COORDINATED WITH EQUIPMENT LAYOUT AND COMPLY WITH ALL APPLICABLE LOCAL AND STATE CODES.



100% CONSTRUCTION DOCUMENTS

REVISIONS:

NUM.	DATE	DESCRIPTION

ANDERSON DESIGN GROUP ARCHITECTURE PLANNING INTERIORS

25 WALLKILL AVENUE • MONTGOMERY • NY 12540
 O 845.294.2724 | F 888.305.8442

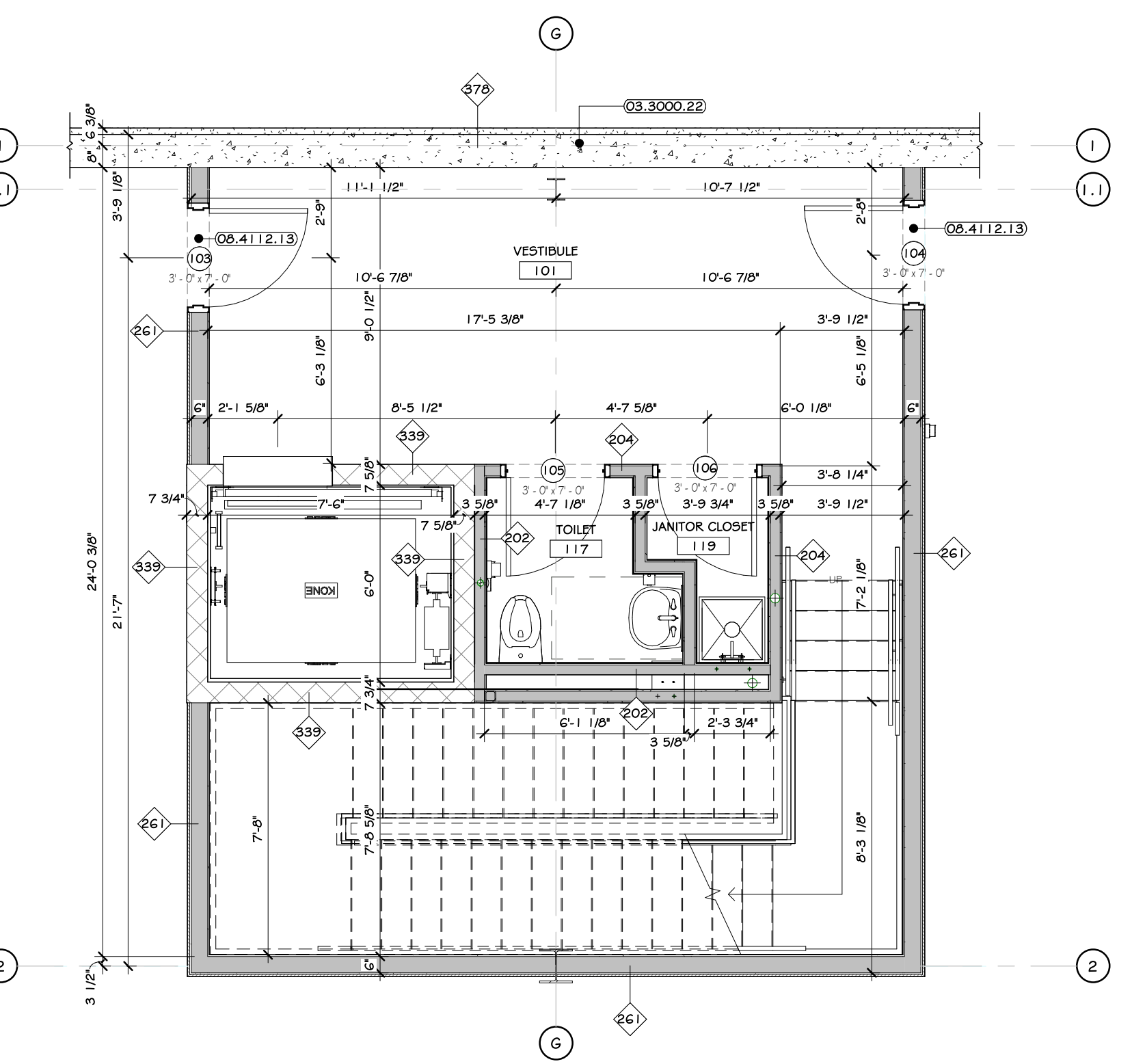
WWW.ADGARCHITECT.COM
 CONTACT@ADGARCHITECT.COM

Project: **ICS 37 POLICE DR MULTI-TENANT WAREHOUSE**
 37 POLICE DRIVE, VILLAGE OF GOSHEN, NY 10924
 NEW YORK

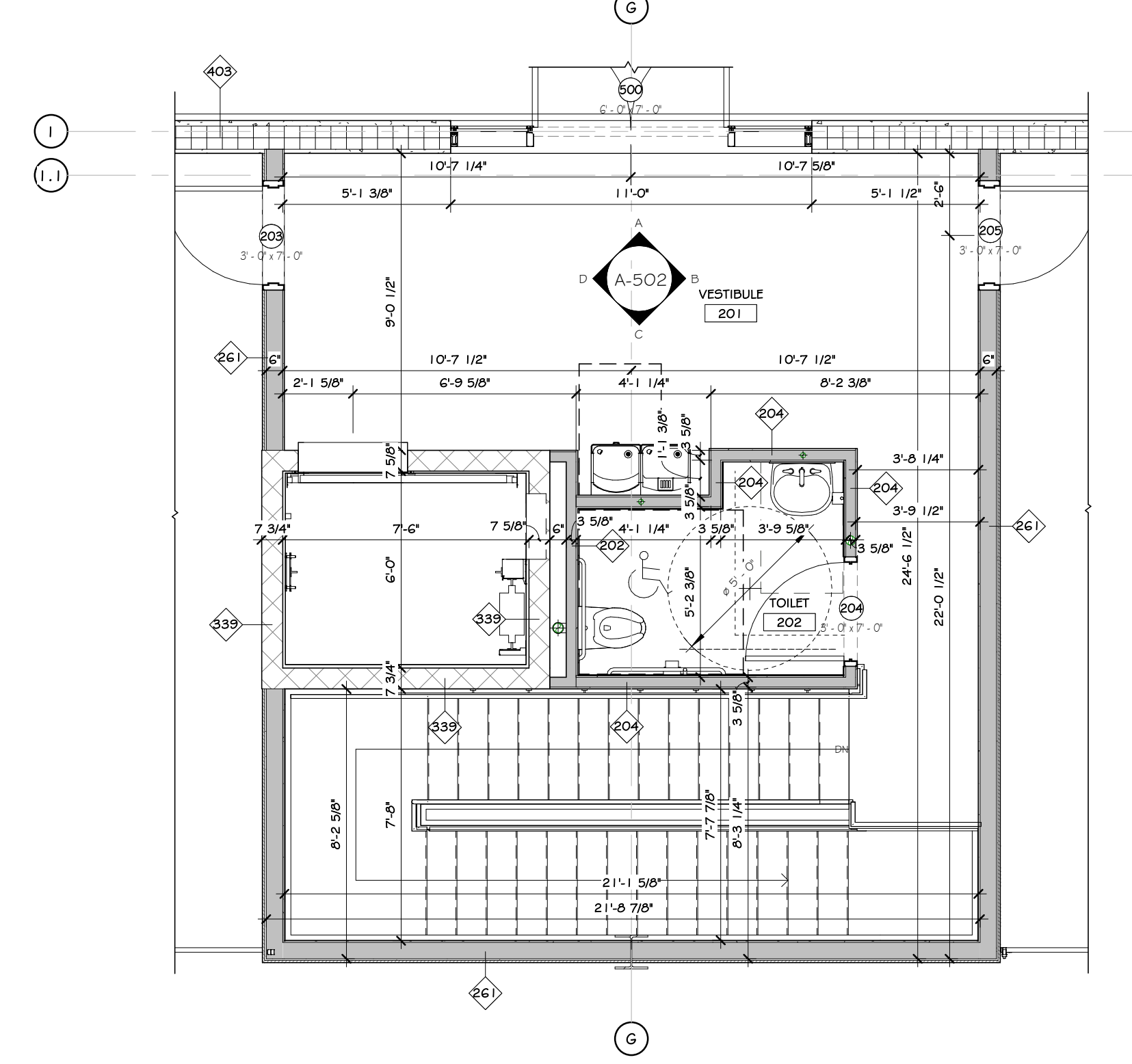
Drawing Name: **MEZZANINE FLOOR PLAN**

Drawn: IDEA Scale: AS NOTED Project: 22111 Date: 06/02/22

Drawing Number: **A-202**

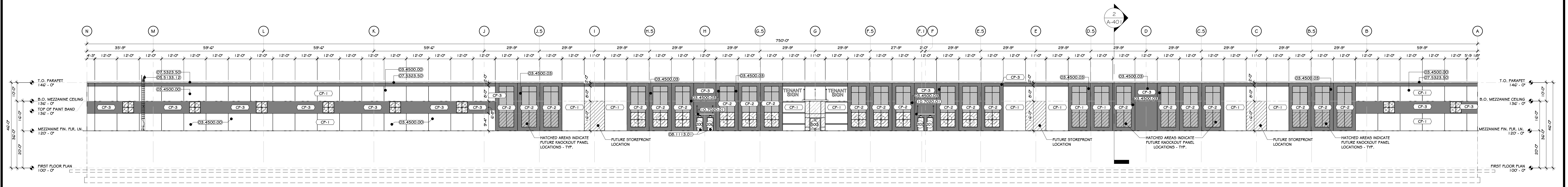


2 TYPICAL FIRST FLOOR VESTIBULE-ELEVATOR PARTIAL PLAN
1/4" = 1'-0"

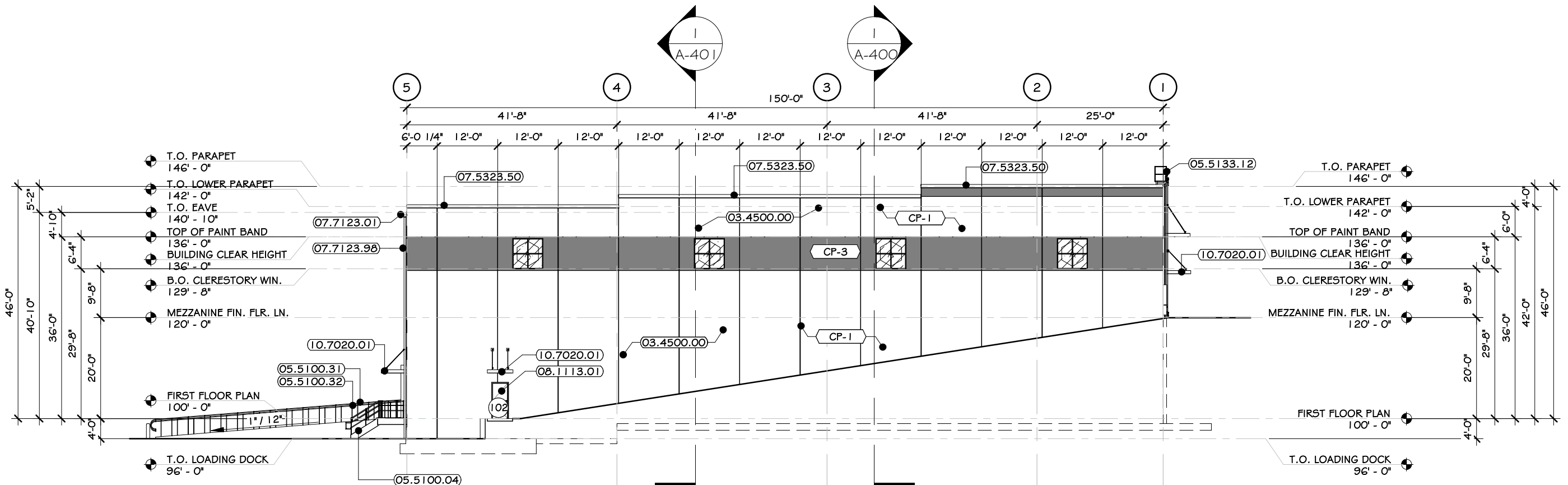
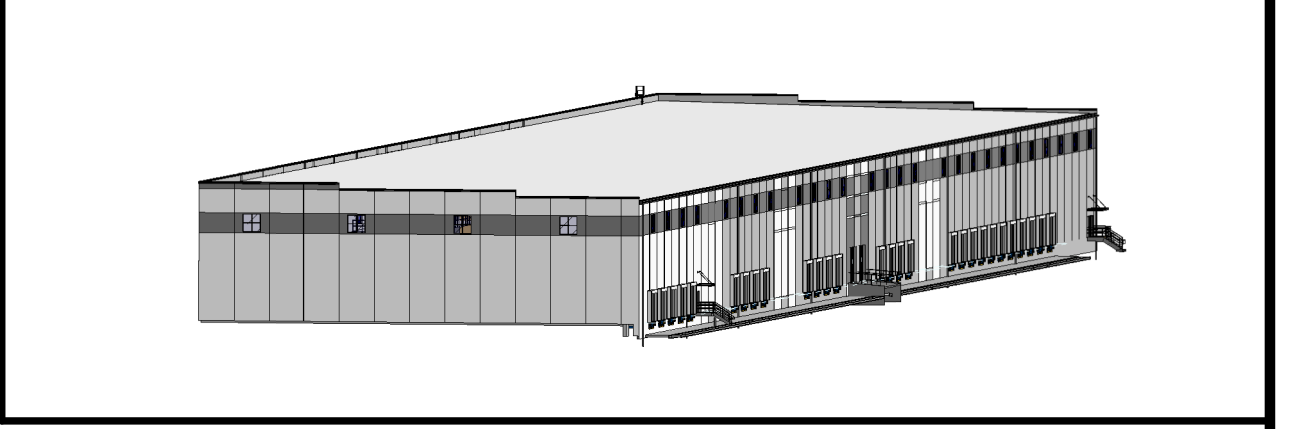


3 TYPICAL MEZZANINE VESTIBULE-ELEVATOR PARTIAL PLAN
1/4" = 1'-0"

WALL LEGEND:	DOOR LEGEND:
MTL STUD WALL	STOREFRONT TAG @ FIRST FL LEVEL
FIRE RATED WALL	PERSONNEL DOOR TAG @ FIRST FL LEVEL
PRECAST WALL	PERSONNEL DOOR TAG @ SECOND FL LEVEL

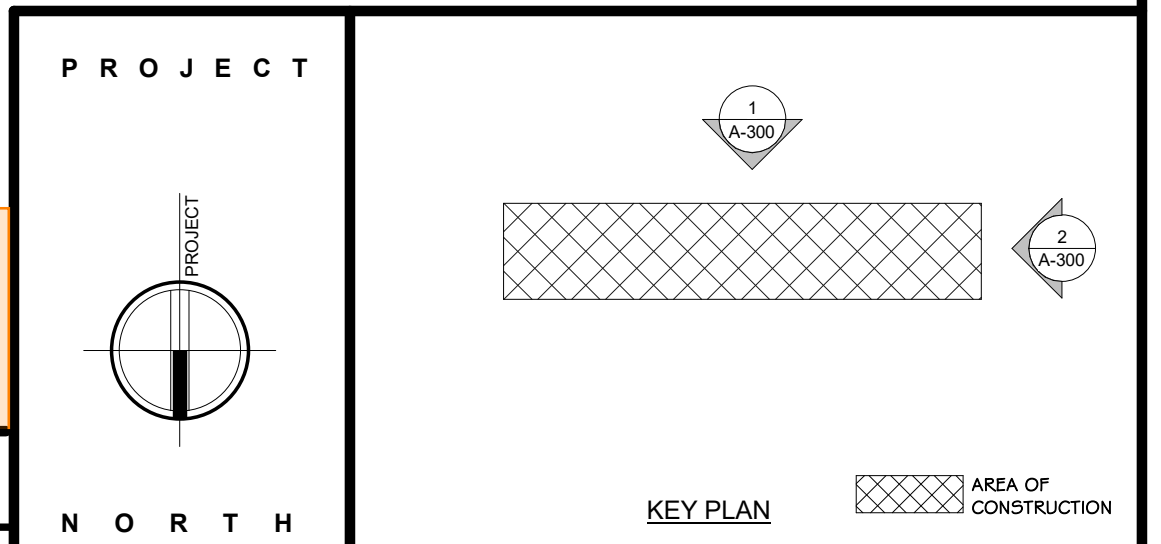


1 SOUTH ELEVATION
3/16" = 1'-0"



2 WEST ELEVATION
3/16" = 1'-0"

ADG DESIGN DISCLAIMER: SCHEMATIC DESIGN DOCUMENTS ARE PRELIMINARY AND ARE NOT TO BE RELIED UPON BY THE OWNER, OWNER'S REPRESENTATIVE, CONTRACTOR, ETC. THIS SCHEMATIC DESIGN DOCUMENT IS TO BE USED SOLELY AS A MEANS OF DETERMINING AN AGREED UPON LAYOUT/ SCOPE OF WORK, AND AS A STARTING POINT TO PROCEED FURTHER WITH DESIGN DEVELOPMENT/ DOCUMENTATION. ONLY UPON THE COMPLETION OF FULL ARCHITECTURAL/ ENGINEERING DOCUMENTS CAN THE PROJECT CONSTRAINTS AND CODE REQUIREMENTS BE FULLY UNDERSTOOD, AND THE PROJECT BE BID TO GENERAL CONTRACTORS FOR A FIXED PRICE/ BUDGET.



CONSTRUCTION NOTES

- NOTE: NOT ALL NOTES MAY APPLY.
- SIDEWALKS TO SLOPE AWAY FROM BUILDING - SEE CIVIL DWGS.
- OWNER TO SUPPLY SECURITY CAMERAS. GC TO PROVIDE ELECTRIC AND SUBSTRATE BLOCKING FOR MOUNTING.
- EMERGENCY BACKUP LIGHT IS TO BE PROVIDED AT EACH EXIT DOOR - SEE ELECTRICAL DRAWINGS & SPECS.
- ILLUMINATED SIGNS ATTACHED TO BUILDING ARE TO BE PROVIDED AND INSTALLED BY AN OWNER APPROVED VENDOR. HESD BY G.C. VENDOR TO SUBMIT APPLICATION TO LOCAL AHI FOR APPROVAL. G.C. TO PROVIDE BLOCKING FOR MOUNTING.
- G.C. AND EC RESPONSIBLE FOR COORDINATING JUNCTION BOX, POWER, BLOCKING PRIOR TO INSTALLATION OF INTERIOR OR EXTERIOR SHEATHING/STRUCTURE AT ALL SIGNAGE, EXTERIOR BUILDING LIGHTING, CAMERAS, OUTLETS, ETC. GC AND EC TO SUBMIT ONE COMPREHENSIVE COORDINATION DRAWING WITH LOCATIONS AND MOUNTING HEIGHTS SHOWN FOR EACH ITEM.
- EXTERIOR WALLS ARE TO BE POWER WASHED PRIOR TO BEING SEALED AND PAINTED.

EXTERIOR PAINTED SURFACES

SYMBOL	SURFACE	1ST COAT	2ND COAT	3RD COAT
PS-1	PERKOID # GALVANIZED METAL	MATERIAL: PRO-INDUSTRIAL PRO-ORL UNIVERSAL METAL PRIMER (R66-310)	MATERIAL: SHEK-ORL HIGH PERFORMANCE ACRYLIC GLOSS (R66-300)	MATERIAL: SHEK-ORL HIGH PERFORMANCE ACRYLIC GLOSS (R66-300)
PS-2	ASPHALT PAVING	MATERIAL: SETFAST ACRYLIC WATERBORNE TRAFFIC MARKING PAINT	-	-

KEY NOTES

- 03.4500.00 PRECAST 8" INSULATED WALL PANEL
- 03.4500.03 PRECAST 12" INSULATED WALL PANEL
- 05.5100.04 METAL STAIRS WITH NON-SLIP GRATING TREADS
- 05.5100.31 FABRICATED PARALLEL PIPE RAIL
- 05.5100.32 FABRICATED PARALLEL GUARD RAIL
- 05.5100.12 TYPED ALUMINUM ACCESS UNDER WITH FLATIRON AND RETURN. SEE SPECS.
- 07.5323.50 PARAPET WALL COPING. SEE SPECS.
- 07.7123.01 12" GUTTER. ROMAN PROFILE. SEE SPECS.
- 07.7123.36 12" X 4" WIDE, 1/2" ALUMINUM SQUARE DOWNSPOUT.
- 08.1113.01 EXTERIOR HOLLOW METAL INSULATED DOOR. SEE SPECS.
- 10.7020.01 ARCHITECTURAL CANOPY, INTERNAL GUTTER AND DRAIN. SEE SPECS.

EXTERIOR FINISH SCHEDULE

MARK	MATERIAL NAME	MATERIAL SPECIFICATION	COLOR	MANUFACTURER / SUPPLIER	IMAGE
CP-1	STEEL TROWEL FINISH	PAINTED CONCRETE PANEL	-SEE SPECS	-SEE SPECS.	
CP-2	STEEL TROWEL FINISH	PAINTED CONCRETE PANEL	-SEE SPECS	-SEE SPECS.	
CP-3	ACM GRAY	PAINTED CONCRETE PANEL	-SEE SPECS	-SEE SPECS.	
CP-1	GLASS, LOW IRON	CLEAR GLASS	-SEE SPECS	-SEE SPECS.	

100% CONSTRUCTION DOCUMENTS

REVISIONS:

NUM.	DATE	DESCRIPTION

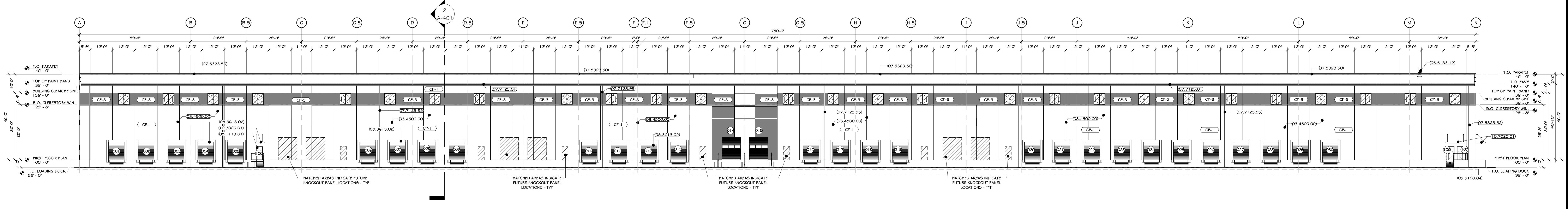
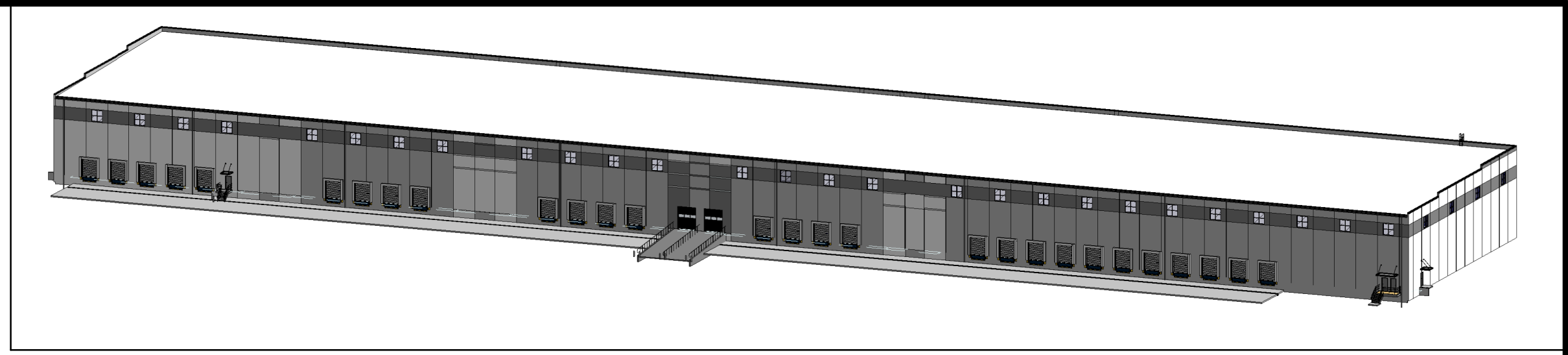
ANDERSON DESIGN GROUP
ARCHITECTURE
PLANNING
INTERIORS

25 WALLKILL AVE • MONTGOMERY • NY 12549
D. 845.294.2724 | F. 888.305.6442
WWW.ADGARCHITECT.COM
CONTACT@ADGARCHITECT.COM

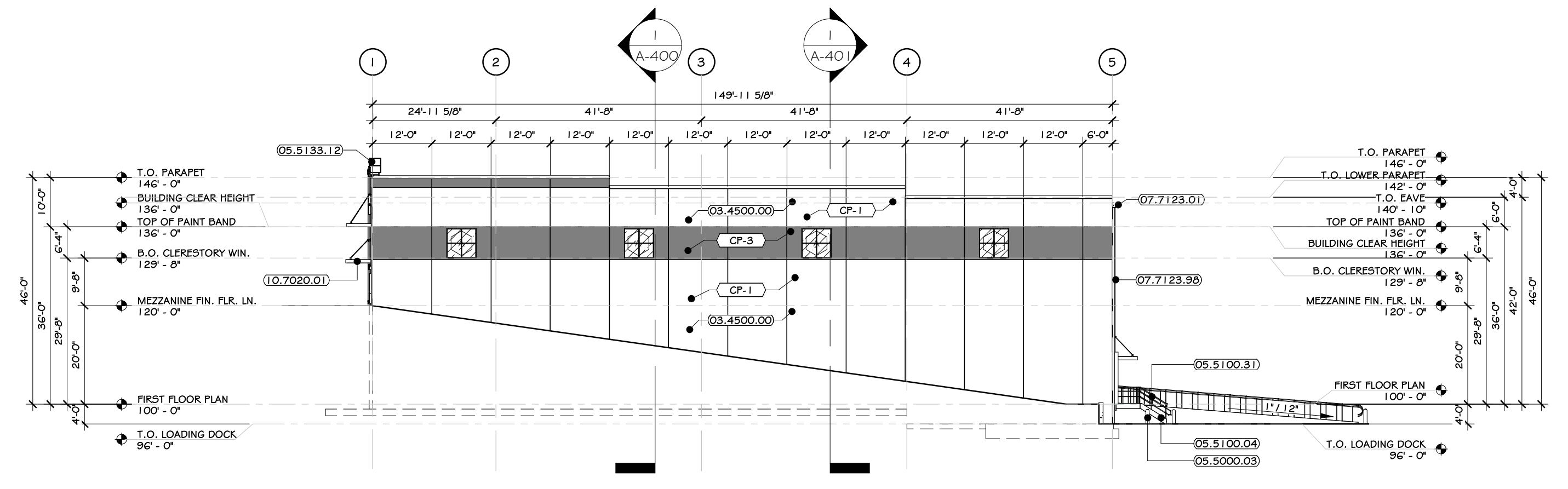
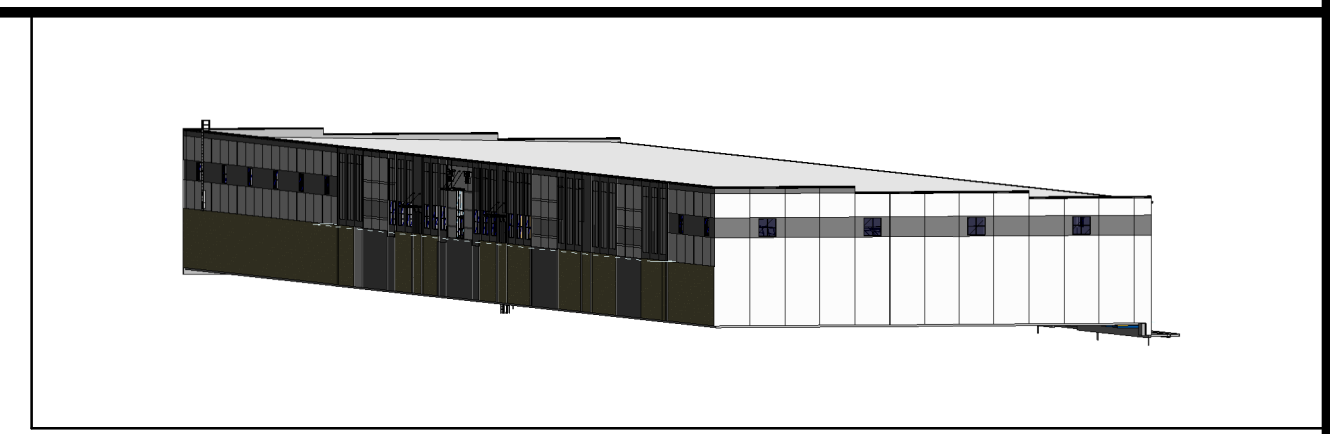
Project: **ICS 37 POLICE DR MULTI-TENANT WAREHOUSE**
37 POLICE DRIVE, VILLAGE OF GOSHEN, NY 10924
NEW YORK

Drawing Name: **EXTERIOR ELEVATIONS**
Drawn: IDEA Scale: AS NOTED Project: 22111 Date: 06/02/22

Drawing Number: **A-300**



1 NORTH ELEVATION
3/16" = 1'-0"



2 EAST ELEVATION
3/16" = 1'-0"

ADG DESIGN DISCLAIMER: SCHEMATIC DESIGN DOCUMENTS ARE PRELIMINARY AND ARE NOT TO BE RELIED UPON BY THE OWNER, OWNER'S REPRESENTATIVE, CONTRACTOR, ETC. THIS SCHEMATIC DESIGN DOCUMENT IS TO BE USED SOLELY AS A MEANS OF DETERMINING AN AGREED UPON LAYOUT/ SCOPE OF WORK, AND AS A STARTING POINT TO PROCEED FURTHER WITH DESIGN DEVELOPMENT/ DOCUMENTATION. ONLY UPON THE COMPLETION OF FULL ARCHITECTURAL/ ENGINEERING DOCUMENTS CAN THE PROJECT CONSTRAINTS AND CODE REQUIREMENTS BE FULLY UNDERSTOOD, AND THE PROJECT BE BID TO GENERAL CONTRACTORS FOR A FIXED PRICE/ BUDGET.

CONSTRUCTION NOTES

- NOTE: NOT ALL NOTES MAY APPLY.
- SIDEWALKS TO SLOPE AWAY FROM BUILDING - SEE CIVIL DWGS.
- OWNER TO SUPPLY SECURITY CAMERAS. GC TO PROVIDE ELECTRIC AND SUBSTRATE BLOCKING FOR MOUNTING.
- EMERGENCY BACKUP LIGHT IS TO BE PROVIDED AT EACH EXIT DOOR - SEE ELECTRICAL DRAWINGS & SPECS.
- ILLUMINATED SIGNS ATTACHED TO BUILDING ARE TO BE PROVIDED AND INSTALLED BY AN OWNER APPROVED VENDOR, HIRSD BY G.C. VENDOR TO SUBMIT APPLICATION TO LOCAL AHJ FOR APPROVAL. G.C. TO PROVIDE BLOCKING FOR MOUNTING.
- G.C. AND GC RESPONSIBLE FOR COORDINATING JUNCTION BOX, POWER, BLOCKING PRIOR TO INSTALLATION OF INTERIOR OR EXTERIOR BRACING/STRUCTURE AT ALL SIGNAGE, EXTERIOR BUILDING LIGHTING, CAMERAS, OUTLETS, ETC. GC AND EC TO SUBMIT ONE COMPREHENSIVE COORDINATION DRAWING WITH LOCATIONS AND MOUNTING HEIGHTS SHOWN FOR EACH ITEM.
- EXTERIOR WALLS ARE TO BE POWER WASHED PRIOR TO BEING SEALED AND PAINTED.

EXTERIOR PAINTED SURFACES

SYMBOL	SURFACE	1ST COAT	2ND COAT	3RD COAT
(PS-1)	PERKOUS & GALVANIZED METAL	MATERIAL: PRO-INDUSTRIAL, PRO-CRIL UNIVERSAL METAL PRIMER (R66-310)	MATERIAL: DHER-CRIL HIGH PERFORMANCE ACRYLIC GLOSS (R66-300)	MATERIAL: DHER-CRIL HIGH PERFORMANCE ACRYLIC GLOSS (R66-300)
(PS-2)	ASPHALT PAVING	MATERIAL: SET/SEAL ACRYLIC WATERBORNE TRAFFIC MARKING PAINT	-	-

KEY NOTES

- 08.4500.00 PRECAST 8" INSULATED WALL PANEL.
- 05.5000.03 8" O.D. BOLLARD, PAINTED SAFETY YELLOW, FILLED WITH CONCRETE WITH A 3/4" CROWN. SEE SPECS.
- 05.5100.04 METAL STAIRS WITH NON-SLIP GRATING TREADS.
- 05.5100.01 FABRICATED PARALLEL PIPE RAIL.
- 05.5133.12 1/2" ALUMINUM ACCESS LADDER WITH PLATFORM AND RETURN. SEE SPECS.
- 07.5333.50 PAINTED WALL CORING. SEE SPECS.
- 07.5333.52 1/2" RIBBED CLOSED FACE DOWNPOUT.
- 07.7123.01 1/2" GUTTER, IRISMA PROFILE. DOOR.
- 07.7123.95 4" X 4" WIDE, 0.60 ALUMINUM SQUARE DOWNPOUT.
- 07.7123.96 12" X 6" WIDE, 0.60 ALUMINUM SQUARE DOWNPOUT.
- 06.1113.01 EXTERIOR FLOW METAL INSULATED DOOR. SEE SPECS.
- 08.3613.02 INSULATED SECTIONAL OVERHEAD STEEL DOORS. SEE SPECS.
- 10.7020.01 ARCHITECTURAL GANTRY, INTERNAL GUTTER AND DRAIN. SEE SPECS.

EXTERIOR FINISH SCHEDULE

MARK	MATERIAL NAME	MATERIAL SPECIFICATION	COLOR	MANUFACTURER / SUPPLIER	IMAGE
CP-1	STEEL TROWEL FINISH	PAINTED CONCRETE PANEL	-SEE SPECS	-SEE SPECS.	
CP-2	STEEL TROWEL FINISH	PAINTED CONCRETE PANEL	-SEE SPECS	-SEE SPECS.	
CP-3	STEEL TROWEL FINISH	PAINTED CONCRETE PANEL	-SEE SPECS	-SEE SPECS.	
CP-1	GLASS, LOW IRON	CLEAR GLASS	-SEE SPECS	-SEE SPECS.	

PROJECT

100% CONSTRUCTION DOCUMENTS

REVISIONS:

NUM.	DATE	DESCRIPTION

ANDERSON DESIGN GROUP

ARCHITECTURE
PLANNING
INTERIORS

25 WALLKILL AVE • MONTGOMERY • NY 12549
O. 845.294.2724 | F. 888.305.6442
WWW.ADGARCHITECT.COM
CONTACT@ADGARCHITECT.COM

Project: **ICS 37 POLICE DR MULTI-TENANT WAREHOUSE**
37 POLICE DRIVE, VILLAGE OF GOSHEN, NY 10924

Drawing Name: **EXTERIOR ELEVATIONS**

Drawn: IDEA Scale: AS NOTED Project: 22111 Date: 06/02/22

Drawing Number: **A-301**