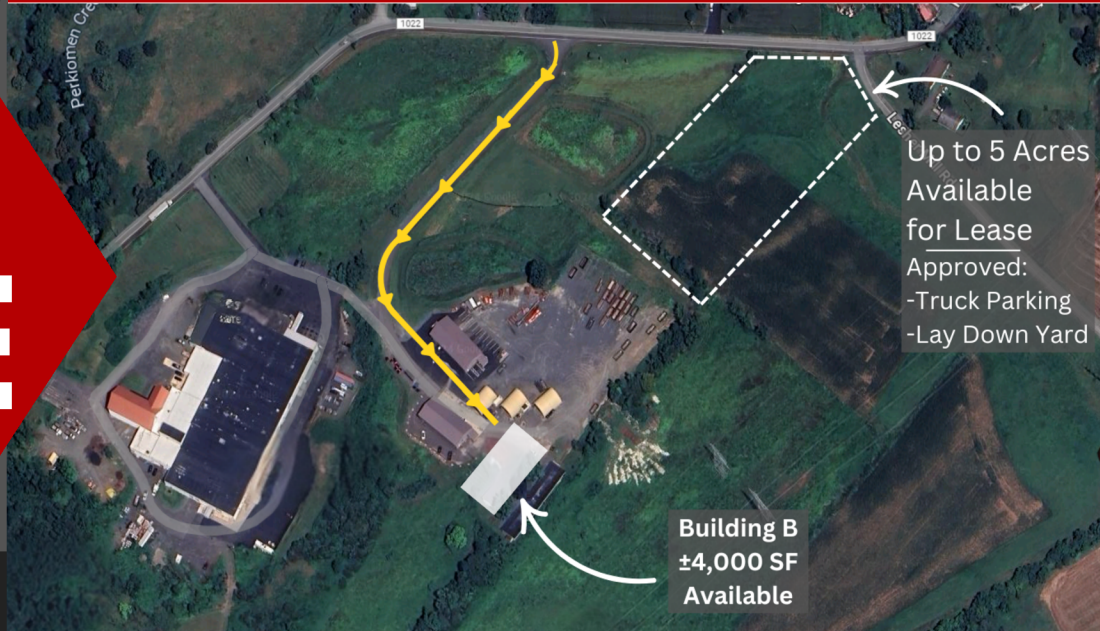


**1901 TOLLGATE RD
PALM, PA 18070**

4,000 SF INDUSTRIAL BUILDING

**FOR
LEASE**



\$8/SF MG

**ZONED: INDUSTRIAL
TRUCK PARKING APPROVED**



Palm, PA is conveniently located less than 10 miles south of the Emmaus/Allentown area, and 7 miles west of the Northeast Extension Quakertown Exit.

Also available for lease: Up to 5 Acres
Industrial storage approved-
•fenced in lay down yard or
•approved truck parking area.

4,000 SF Building
-3 Phase Electric
-Natural Gas Heat
-Security System
-Conference Rooms



kw
KELLERWILLIAMS
REAL ESTATE
Each office is individually owned and operated

James Balliet
President
O 610-435-1800
C 610-972-6808

THE James Balliet
PROPERTY GROUP

James@JBPropertyGroup.com

Ryan@JBPropertyGroup.com

www.JBPropertyGroup.com

Ryan McGeehan
Associate Broker
O 610-435-1800
C 484-695-6120