



LAND-STAR

33°33'48.5"N 96°22'33.6"W



CR 4030, SAVOY, TX 75479

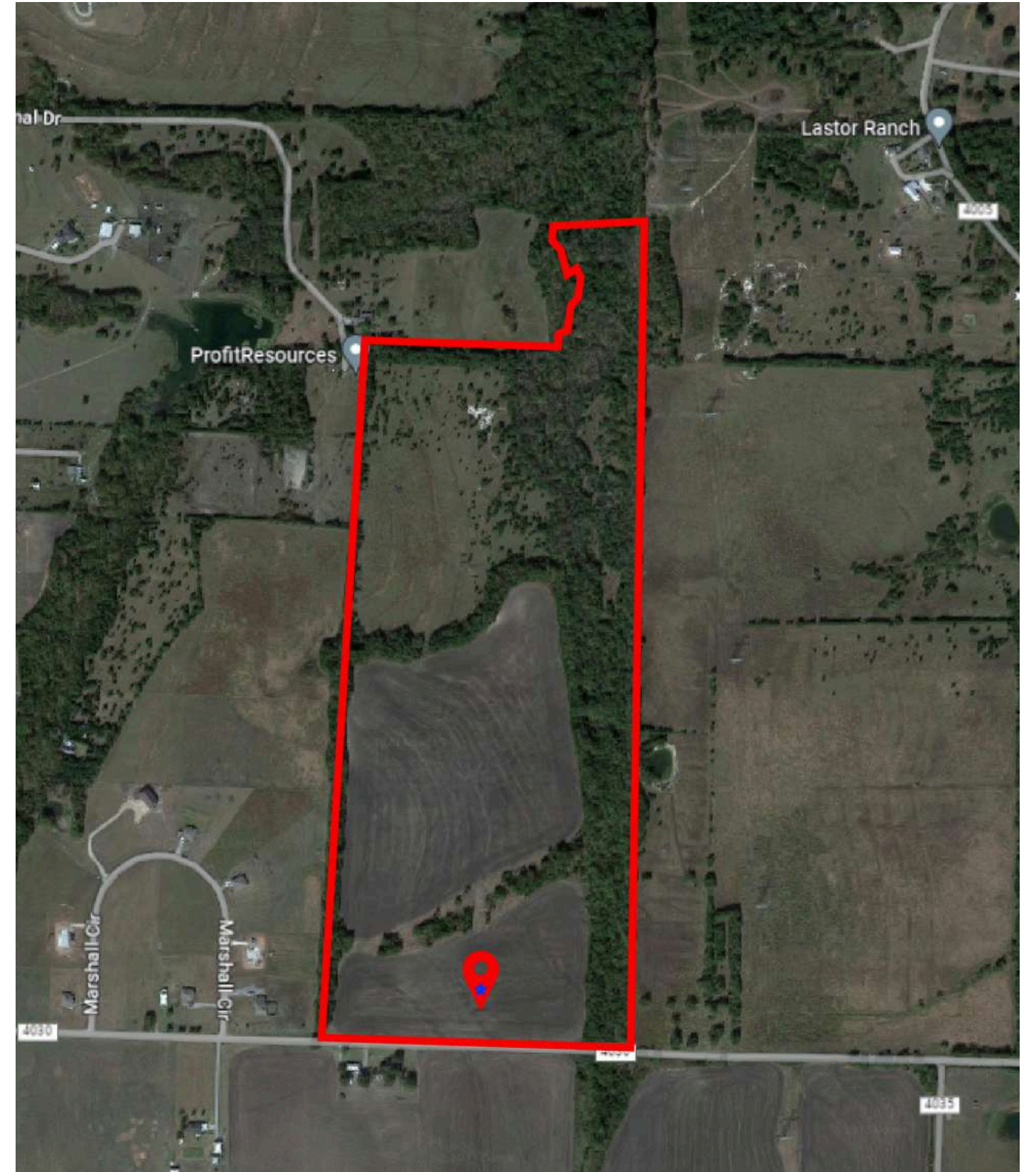
LAND-STAR REAL ESTATE LLC



LAND-STAR

TABLE OF CONTENTS

- 01 Overview | Detailed view of Listing
- 02 County | Detailed View of county and Future Developments
- 03 Gallery | Images and Price
- 04 Drive time | Drive time to property from different Locations
- 05 Contact Us | Contact Details



VENKAT(VICTOR) GOTTIPATI | VICTOR@LAND-STAR.US | WWW.LAND-STAR.US

BREAKING NEWS



LAND-STAR

Global cybersecurity firm McAfee announces new regional headquarters at The Star in Frisco

San Jose-based cybersecurity firm McAfee (Nasdaq: MCFE) announced on Thursday that it is putting its new regional headquarters in Frisco, according to a news release.

“We’re looking forward to partnering closely with the city of Frisco and Frisco EDC as we become one of Frisco’s newest corporate citizens,” Benni Bueckert, VP of Workplace and Engagement, said in the release.



WHY CHOOSE FRISCO FOR McAfee Regional HQ

“Our decision to choose Frisco for our regional HQ was also based on the diverse cultural destination the city has become and the many opportunities our team members will have to be immersed in the community and to give back to the many nonprofit organizations here,” Bueckert said.

	ADDRESS	CR 4030 SAVOY, TX 75479
	INTERSECTION	FARM TO MARKET 4030
	SCHOOL DISTRICT	SAVOY ISD
	SITE AREA ACREAGE	89.851 Acres
	SITE AREA SFT	3,913,910 SFT

	COUNTY / CITY / STATE	FANNIN / SAVOY / TEXAS
	CURRENT ZONING	FANNIN, TEXAS
	CURRENT USE	RAW LAND
	POTENTIAL USES	Residential/ Commercial
	LEGAL DESCRIPTION	A0274 E DANIELS, ACRES 89.851

VENKAT(VICTOR) GOTTIPATI | VICTOR@LAND-STAR.US | WWW.LAND-STAR.US

CR 4030, SAVOY, TX 75479

33.563484, -96.375999



LAND-STAR



GALLERY



LAND-STAR



Total Acreage : 89.851 Acres

VENKAT(VICTOR) GOTTIPATI | VICTOR@LAND-STAR.US | WWW.LAND-STAR.US



LAND-STAR

Fannin County is a county in the far northeast of the U.S. state of Texas, on the border with Oklahoma. As of the 2020 census, its population was 35,662. The county seat is Bonham.

Historical population

1990	24,804	2.1%
2000	31,242	26.0%
2010	33,915	8.6%
2020	35,662	5.2%

Adjacent counties

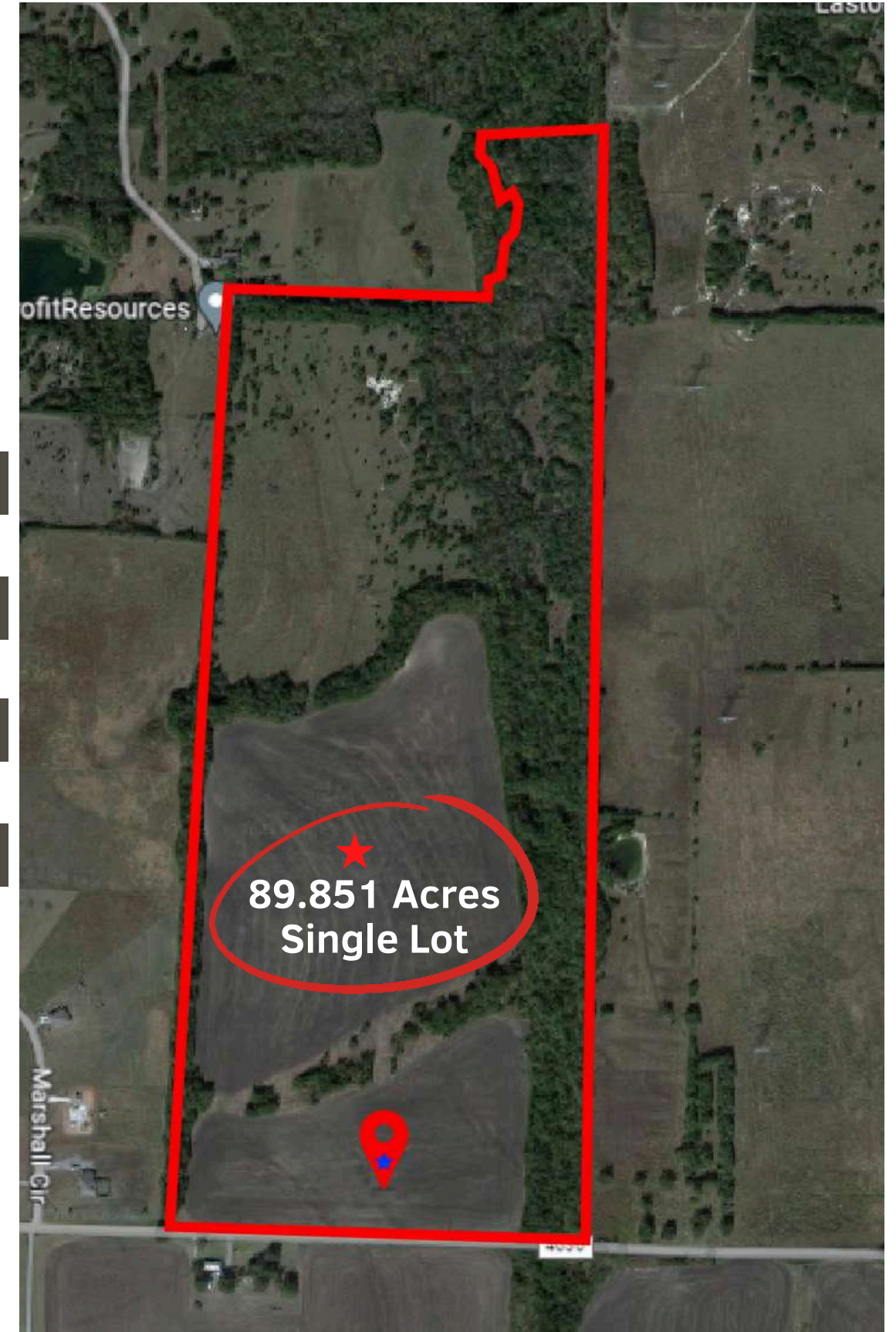
- Bryan County, Oklahoma (north)
- Lamar County (east)
- Delta County (southeast)
- Hunt County (south)
- Collin County (southwest)
- Grayson County (west)

Major highways

- U.S. Highway 69
- U.S. Highway 82
- State Highway 11
- State Highway 34
- State Highway 50
- State Highway 56
- State Highway 78
- State Highway 121

Drive Time

US HWY 82	6.6 Miles	12 Min Drive
Savoy	4.7 Miles	10 Min Drive
Bells	6.4 Miles	10 Min Drive
WhiteWright	4.8 Miles	10 Min Drive
Bonham	16.7 Miles	24 Min Drive
Ector ISD	10.5 Miles	17 Min Drive





LAND-STAR



CONTACT US

E-mail **victor@land-star.us**

Website **www.land-star.us**

Phone **214 455 7623**

Address **5 Cowboys Way, Ste #300, Frisco, Tx
75034**