

# 3450

## FOR LEASE | 2,400 SF AVAILABLE

**DODGE ST SUITE B  
DUBUQUE, IA 52003**



**RYAN FITZPATRICK**  
Senior Vice President  
+1 319 431 1898  
rfitzpatrick@iowaca.com

**PARKER RIDGE**  
Associate  
+1 641 226 9983  
pridge@iowaca.com

**CHLOE MARZEN**  
Business Analyst

**OLIVIA CHRISTIANSON**  
Marketing Specialist

 **CUSHMAN &  
WAKEFIELD**  
Iowa Commercial Advisors



# SPACE AVAILABLE

3450 DODGE ST SUITE B IN DUBUQUE, IOWA IS LOCATED ALONG THE BUSY U.S. HIGHWAY 20 CORRIDOR, ONE OF THE CITY'S MAIN COMMERCIAL ROUTES. THE SITE SITS NEAR MAJOR SHOPPING CENTERS AND RETAIL DEVELOPMENTS, INCLUDING THE KENNEDY MALL AREA, WHICH IS IT PART OF DUBUQUE'S PRIMARY RETAIL AND COMMERCIAL DISTRICT. THE LOCATION PROVIDES STRONG VISIBILITY AND CONVENIENT ACCESS FOR BOTH LOCAL TRAFFIC AND TRAVELERS PASSING THROUGH THE AREA.

<b>SIZE:</b>	<b>2,400 SF</b>
<b>RENT RATE:</b>	<b>\$38.00 PSF NNN</b>
<b>EST OPEX:</b>	<b>\$11.48 PSF</b>
<b>POSSESSION:</b>	<b>CONTACT AGENT</b>
<b>TERM:</b>	<b>NEGOTIABLE</b>



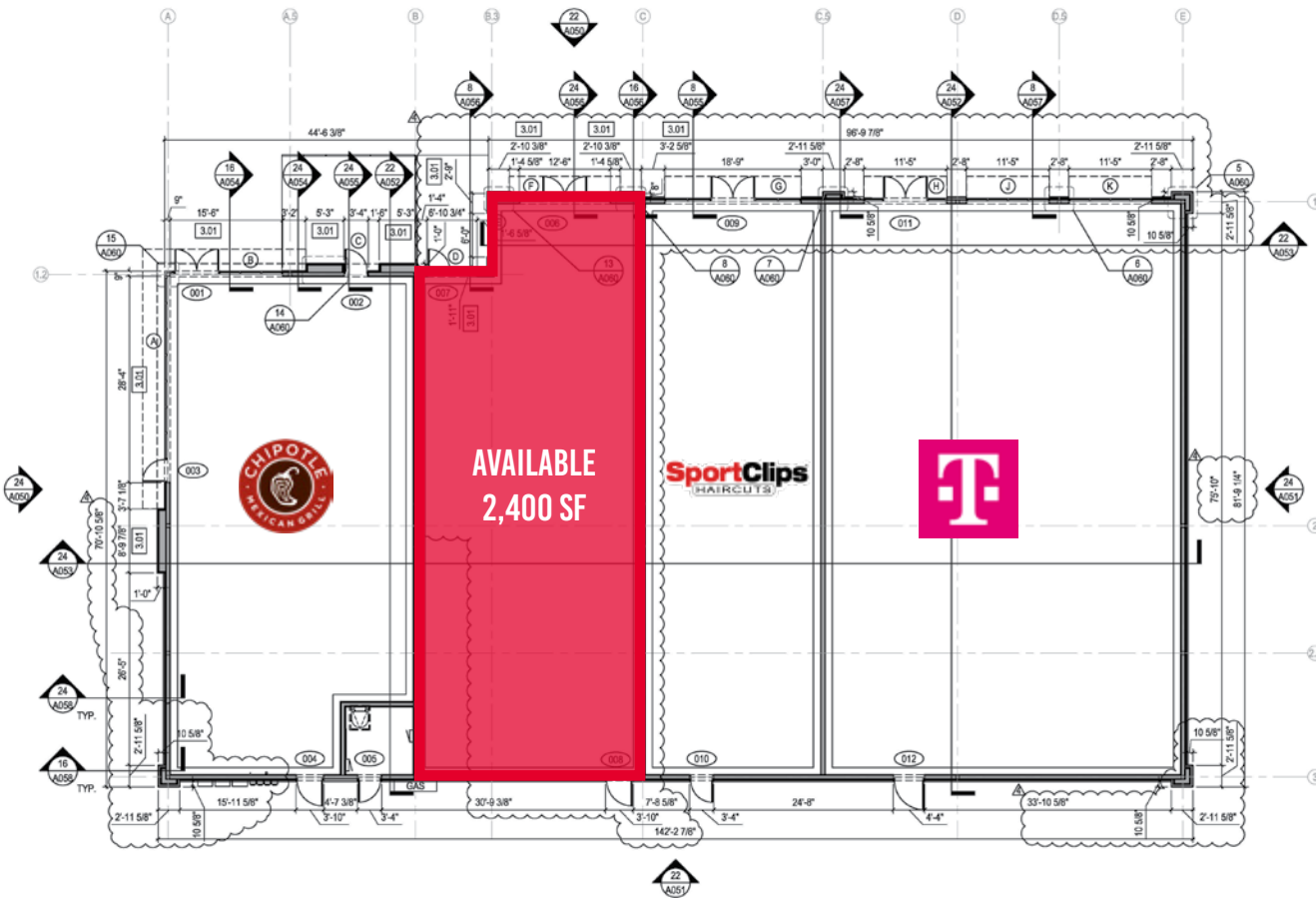
## NEIGHBORS

T-Mobile, Chipotle, SportClips, Chick-fil-A, Hy-Vee, Target, Jersey Mike's, Smoothie King, UnityPoint Urgent Care, and many more

## COMMENTS

- Located along heavily traveled U.S. Hwy 20
- Easily convertible for a variety of uses
- Built-out bathroom

# FLOORPLAN



<b>BUILDING SIZE:</b>	<b>10,690 SF</b>
<b>SUITE B:</b>	<b>2,400 SF</b>
<b>TOTAL AVAILABLE</b>	<b>2,400 SF</b>

## THIS SPACE FEATURES:

- 2,400 SF OF RETAIL SPACE
- EASILY CONVERTIBLE FOR A VARIETY OF USES
- SIGNAGE AVAILABLE ALONG DODGE ST
- LOCATED IN A RETAIL DENSE REGION

# LOCATION

## MAJOR ROADWAYS

US HWY 20

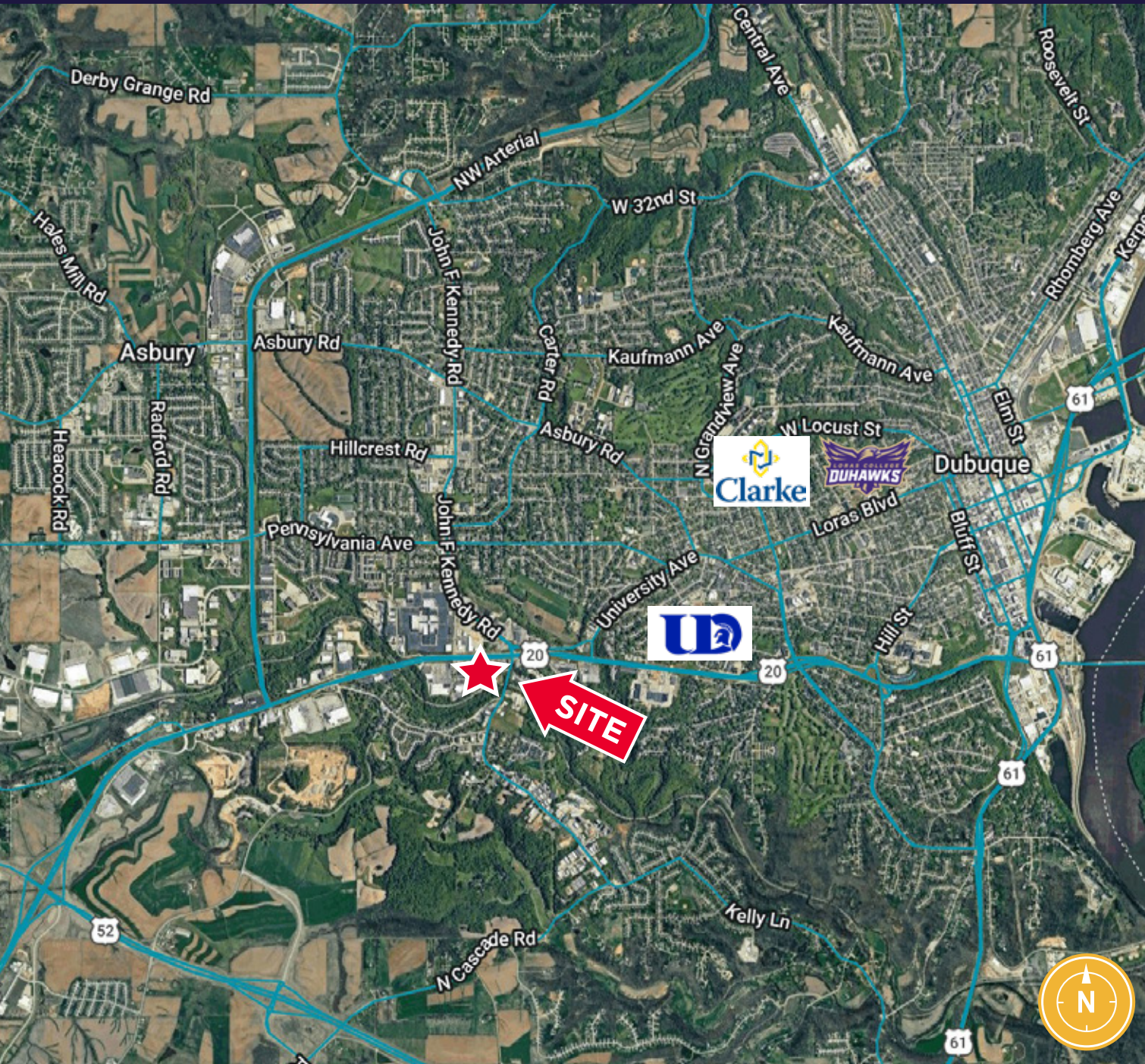
NW ARTERIAL

JOHN F KENNEDY RD

ASBURY RD

CENTRAL AVE

## COLLEGE/UNIVERSITIES



# SOUTHWEST DRONE VIEW





# NORTHEAST DRONE VIEW



## DEMOGRAPHICS

	1 MILE	3 MILES	5 MILES
TOTAL POPULATION	6,265	50,430	74,450
DAYTIME POPULATION	10,763	61,316	85,630
MEDIAN AGE	44	38	39
TOTAL HOUSEHOLDS	3,127	21,219	30,989
AVERAGE HOUSEHOLD INCOME	\$80,047	92,704	\$91,218

# RETAIL REGION



# 3450

## FOR LEASE | 2,400 SF AVAILABLE

**DODGE ST SUITE B  
DUBUQUE, IA 52003**



### FOR MORE INFORMATION CONTACT:

**RYAN FITZPATRICK**  
Senior Vice President  
+1 319 431 1898  
rfitzpatrick@iowaca.com

**PARKER RIDGE**  
Associate  
+1 641 226 9983  
pridge@iowaca.com

**CHLOE MARZEN**  
Business Analyst

**OLIVIA CHRISTIANSON**  
Marketing Specialist

 **CUSHMAN &  
WAKEFIELD**  
Iowa Commercial Advisors