

Retail Space For Lease

1440 S. Escondido Blvd.
Escondido, CA



For more information, please contact:

Nick Zech
858-232-2100
nzech@cdccommercial.com
CalBRE Lic. #01721457

Matt Orth
858-736-1337
morth@cdccommercial.com
CalBRE Lic. #01884500

11440 W. Bernardo Ct., #300
San Diego, CA 92127
T: 760-743-8500
www.cdccommercial.com

Property Information

- Retail Space located on the first floor of a mixed use building
- Easy access to Interstate 15
- Dedicated covered parking with after hours security gate
- Close Proximity to Major Shopping Centers and Eateries

Contact Broker for additional information.



Available

Suite B/C - 1,825 SF

\$1.00 psf
+ NNN

This information is compiled from data which we believe to be correct but no liability is assumed by this company as to accuracy of such data. V21

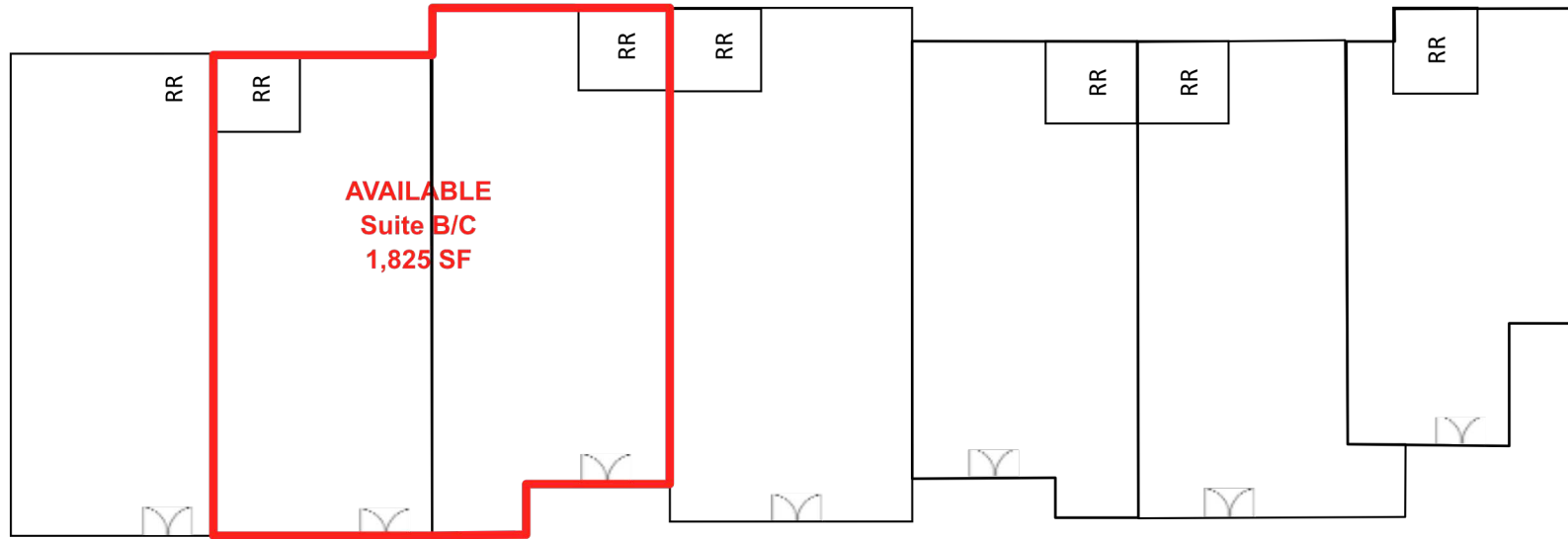
For more information, please contact:

Nick Zech
858-232-2100
nzech@cdccommercial.com
CalBRE Lic. #01721457

Matt Orth
858-736-1337
morth@cdccommercial.com
CalBRE Lic. #01884500

11440 W. Bernardo Ct., #300
San Diego, CA 92127
T: 760-743-8500
www.cdccommercial.com

Site Plan



S. Escondido Blvd.

This information is compiled from data which we believe to be correct but no liability is assumed by this company as to accuracy of such data. V21

For more information, please contact:

Nick Zech
858-232-2100
nzech@cdccommercial.com
CalBRE Lic. #01721457

Matt Orth
858-736-1337
morth@cdccommercial.com
CalBRE Lic. #01884500

11440 W. Bernardo Ct., #300
San Diego, CA 92127
T: 760-743-8500
www.cdccommercial.com

Demographics

Population	2 Mile	5 Mile	10 Mile
2022 Total Population:	69,753	196,142	470,835
2027 Population Projection:	69,911	196,595	474,538
Pop Growth 2010-2022:	0.5%	0.5%	0.8%
Median Age:	34.2	36.5	38.1
Households			
2022 Total Households:	21,163	64,236	160,246
HH Growth 2022-2027:	0.1%	0.1%	0.2%
Median Household Inc:	\$68,851	\$75,695	\$97,697
Avg Household Size:	3.2	3	2.9
2020 Avg HH Vehicles:	2.00	2.00	2.00
Housing			
Median Home Value:	\$562,226	\$578,482	\$715,472
Median Year Built:	1976	1979	1985

This information is compiled from data which we believe to be correct but no liability is assumed by this company as to accuracy of such data. V21

