



SUGAR MILL

SWEET. SINCE 1945.



SUGAR MILL



933 LOUISE

+/- 1,000 - +/- 3,871 SF

Ground floor, second generation retail in
Plaza Midwood, Charlotte

REBELREBELCRE.COM

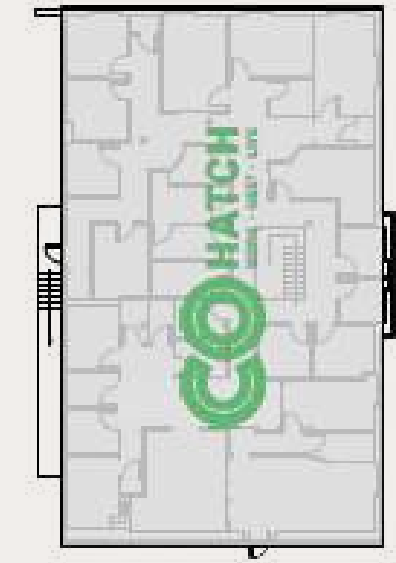
PLAZA MIDWOOD RETAIL

PROPERTY HIGHLIGHTS

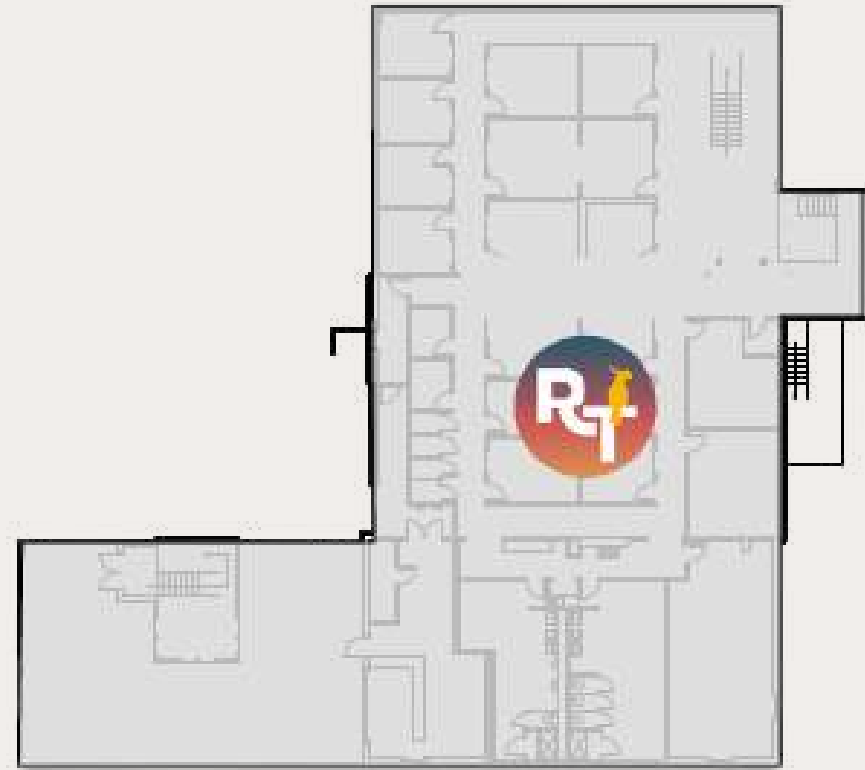
- Available square footage: +/- 1,000 - 3,871 SF
- Patio opportunities
- On-site parking

Nearby retailers: Intermezzo, Central Coffee, Two Scoops Creamery, Sip City & Daily Ritual, Moo & Brew, & Lunchbox Records





SECOND FLOOR

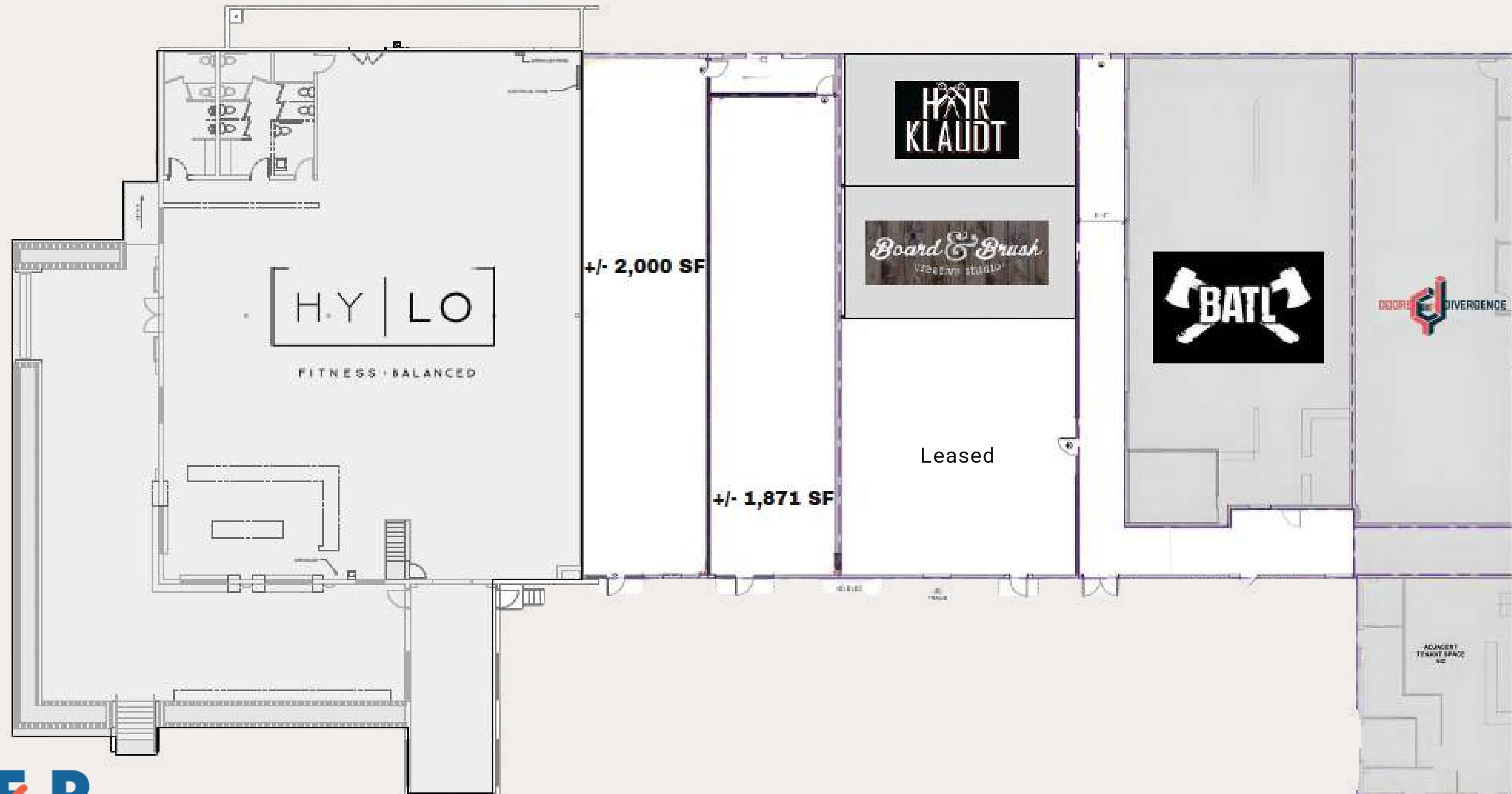


GROUND LEVEL

NEVER
cookie
CUTTER

SITE PLAN

Ground Level Cont.



NEVER
cookie
CUTTER



Conceptual Rendering



SITE PLAN

**REBEL
REBEL**



**LOCATION,
LOCATION,
LOCATION**

An aerial photograph of Atlanta, Georgia, showing a mix of urban development and greenery. In the foreground, there are residential buildings, parking lots, and a multi-lane highway with an overpass. The middle ground is filled with a dense residential area with many trees. In the background, the city skyline is visible under a clear blue sky with light clouds. The text 'PLAZA MIDWOOD' is superimposed in the center of the image in a large, bold, white font with a black outline.

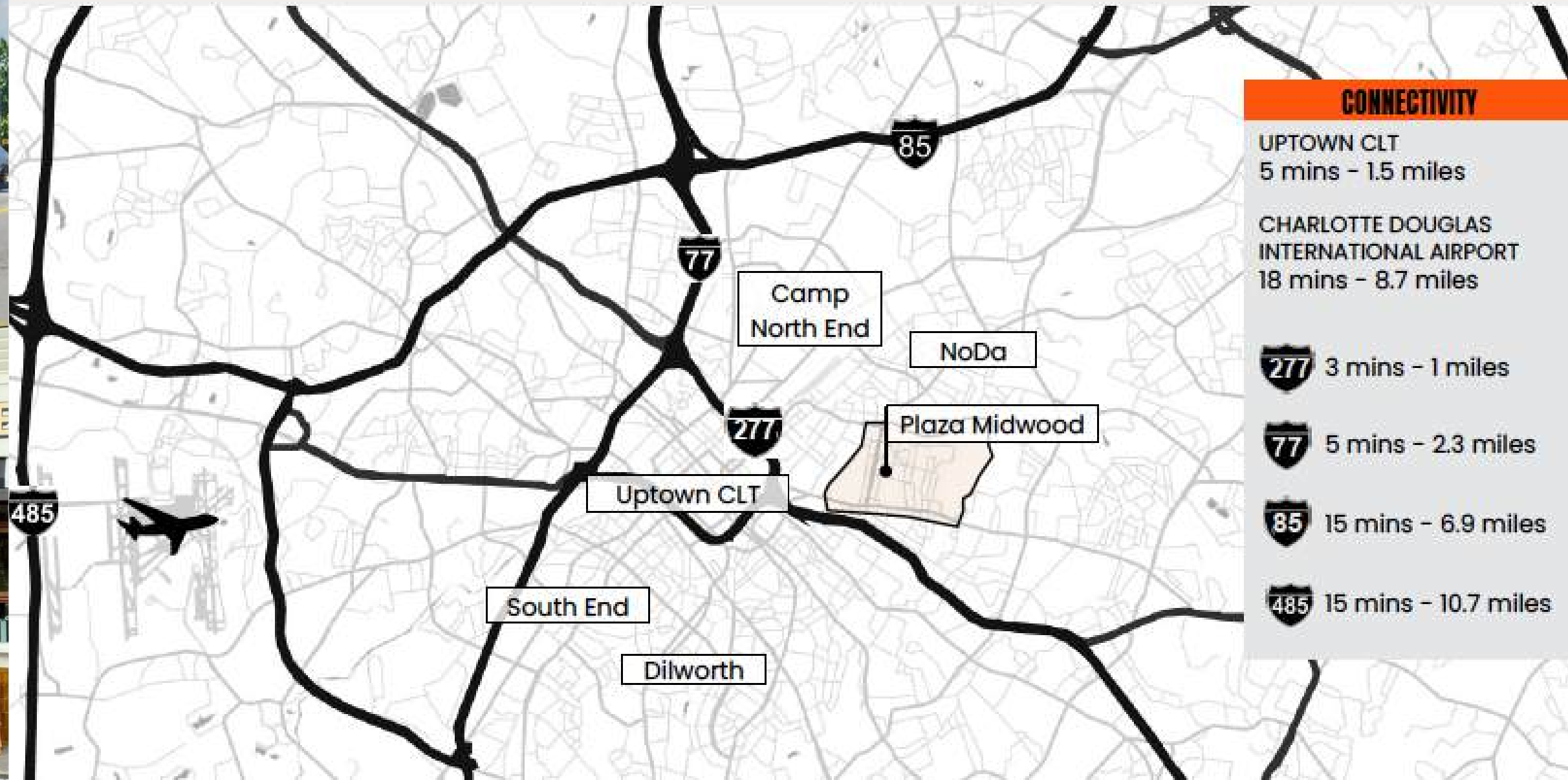
PLAZA
MIDWOOD



PLAZA MIDWOOD

Plaza Midwood is a vibrant convergence point where innovative creativity intertwines with timeless Southern charm. Elegant historic homes and charming office spaces nestled beneath the shade of trees line one street, while colorful graffiti-adorned consignment shops filled with unique treasures line the next.

From trendy breweries and charming bookstores to BBQ joints and beyond, Plaza Midwood offers a diverse array of experiences to suit every taste and interest. It's a neighborhood that truly has something special to offer to everyone who visits.



CONNECTIVITY	
UPTOWN CLT	5 mins - 1.5 miles
CHARLOTTE DOUGLAS INTERNATIONAL AIRPORT	18 mins - 8.7 miles
277	3 mins - 1 miles
77	5 mins - 2.3 miles
85	15 mins - 6.9 miles
485	15 mins - 10.7 miles



LET'S GO CONNECT

ADAM WILLIAMS, PRINCIPAL
ADAM@REBELREBELCRE.COM
980-722-1536

