



For Lease

4126 E Madison Street, Seattle, WA

Prime Madison Park office space with easy access to downtown Seattle, University of Washington, I-5 & SR 520.

PROPERTY HIGHLIGHTS

- + Suite 202
- + Fully Serviced (not including suite janitorial)
- + Available February 1, 2026
- + Includes 1 Parking Stall
- + Elevator access, security, private shower, secured bike rack
- + Adjacent to banks, shops, restaurants, parks and Madison Park Beach
- + Abundant and free street parking in surrounding neighborhood

DEAN ALTARAS, CCIM

Partner
+1 425 586 5613
daltaras@nai-psp.com

BILLY POLL, CCIM

Partner
+1 425 586 5604
bpoll@nai-psp.com



THE INFORMATION CONTAINED HEREIN HAS BEEN GIVEN TO US BY THE OWNER OF THE PROPERTY OR OTHER SOURCES WE DEEM RELIABLE, WE HAVE NO REASON TO DOUBT ITS ACCURACY, BUT WE DO NOT GUARANTEE IT. ALL INFORMATION SHOULD BE VERIFIED PRIOR TO PURCHASE OR LEASE.

TOTAL SF

1,343 SF

PRICE/SF

\$40.00

TYPE

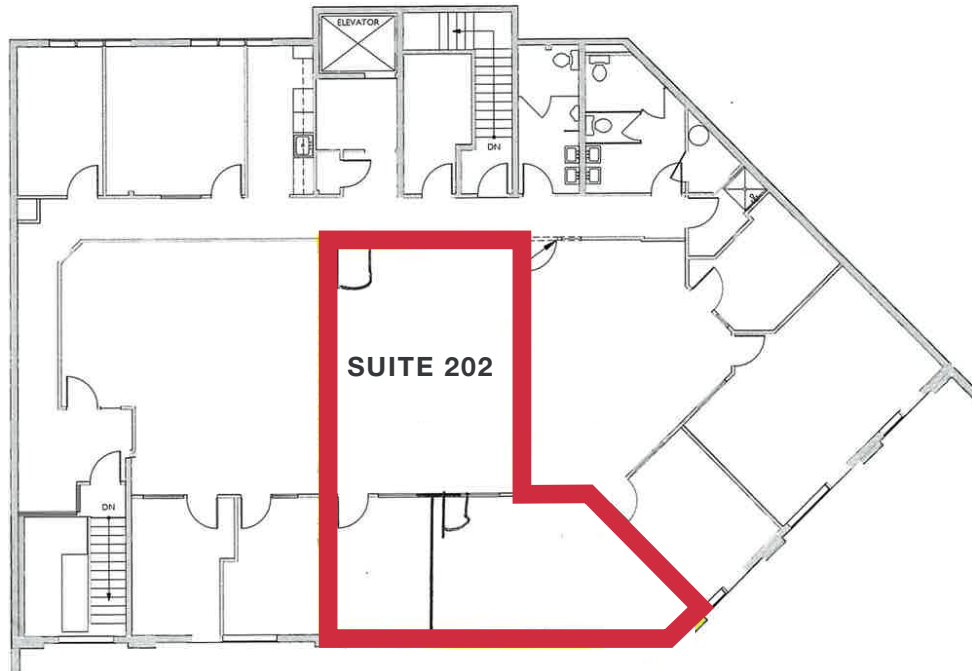
Fully Serviced



nai-psp.com



Floor Plan



DEAN ALTARAS, CCIM
Partner
+1 425 586 5613
daltaras@nai-psp.com

BILLY POLL, CCIM
Partner
+1 425 586 5604
bpoll@nai-psp.com



*Rare Office Leasing
Opportunity in
Seattle's Madison Park*



DEAN ALTARAS, CCIM
Partner
+1 425 586 5613
daltaras@nai-psp.com

BILLY POLL, CCIM
Partner
+1 425 586 5604
bpoll@nai-psp.com

