

PROPERTY SUMMARY

FOR LEASE | OFFICE: +/- 586 SF
1623 SE LAFAYETTE STREET, PORTLAND, OR 97202



PROPERTY DESCRIPTION

Bright, clean office space with with signage opportunities on both SE 17th and SE Lafayette with excellent traffic exposure. Tenant pays trash and phone/internet only. Rent includes taxes, insurance, cams, electric, water, and 1 parking space. Main entrance on SE Lafayette offers safe and private entry with the convenience of public transportation and main thoroughfares right around the corner.

PROPERTY HIGHLIGHTS

- Private office
- Open work area
- Dedicated restroom
- Kitchenette
- Off-street parking space
- General Employment Zoning

LOCATION DESCRIPTION

Centrally located on the corner of SE 17th & SE Lafayette in SE Portland's Brooklyn neighborhood. On the SE 17th & Rhine MAX Orange Line with easy access to Powell Blvd and I-5.

OFFERING SUMMARY

Lease Rate:	\$1,250.00 per month (MG)
Building Size:	4,600 SF

DEMOGRAPHICS	0.3 MILES	0.5 MILES	1 MILE
Total Households	340	2,352	9,550
Total Population	735	5,032	20,315
Average HH Income	\$134,773	\$122,683	\$127,786

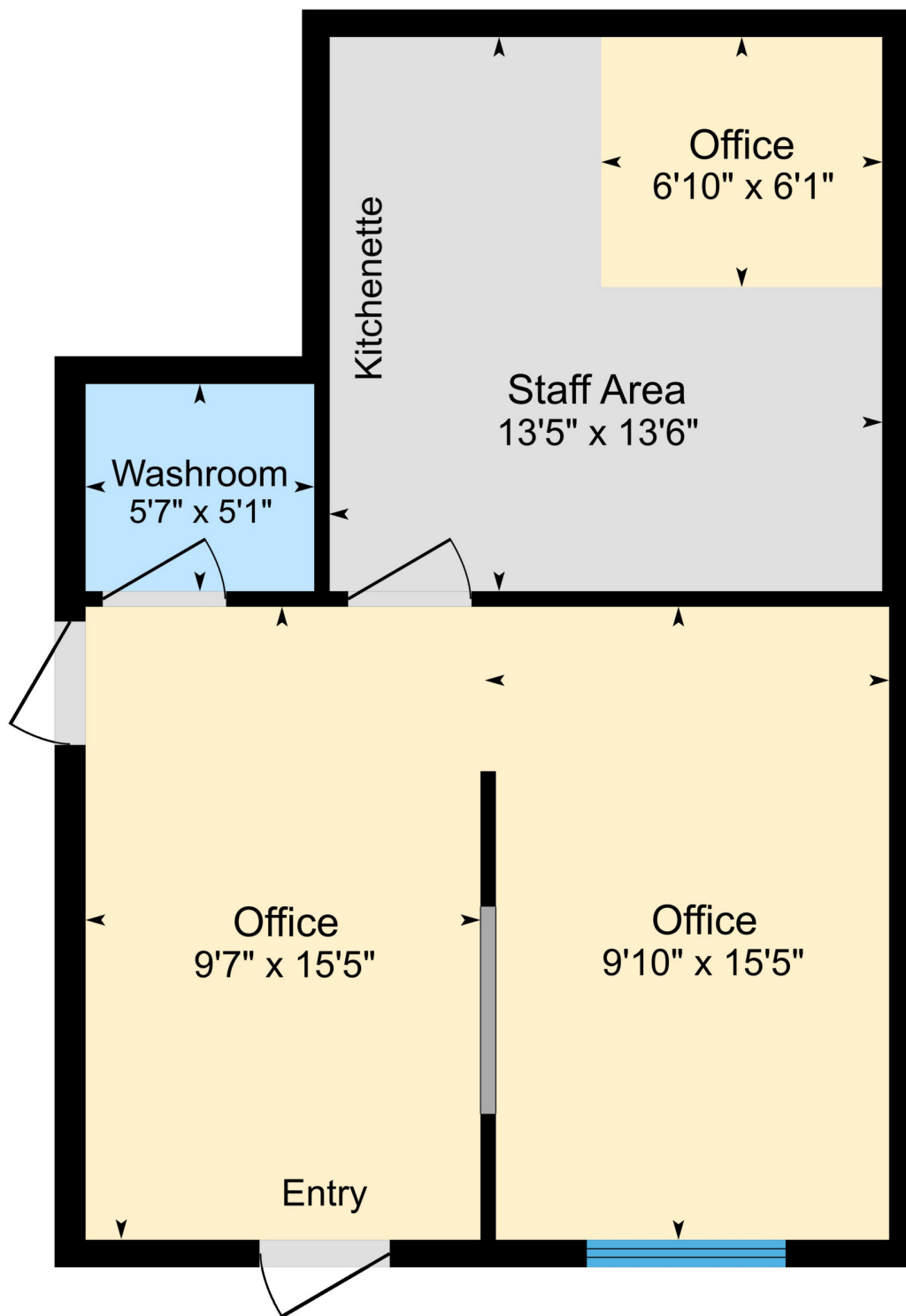
MARISSA LEE

Commercial Broker
Marissa@CommercialRENW.com
971.280.2222

Commercial Real Estate NW
7320 SW Hunziker Rd, Ste 203
Tigard, OR 97223
CommercialRENW.com

FLOOR PLAN

FOR LEASE | OFFICE: +/- 586 SF
1623 SE LAFAYETTE STREET, PORTLAND, OR 97202



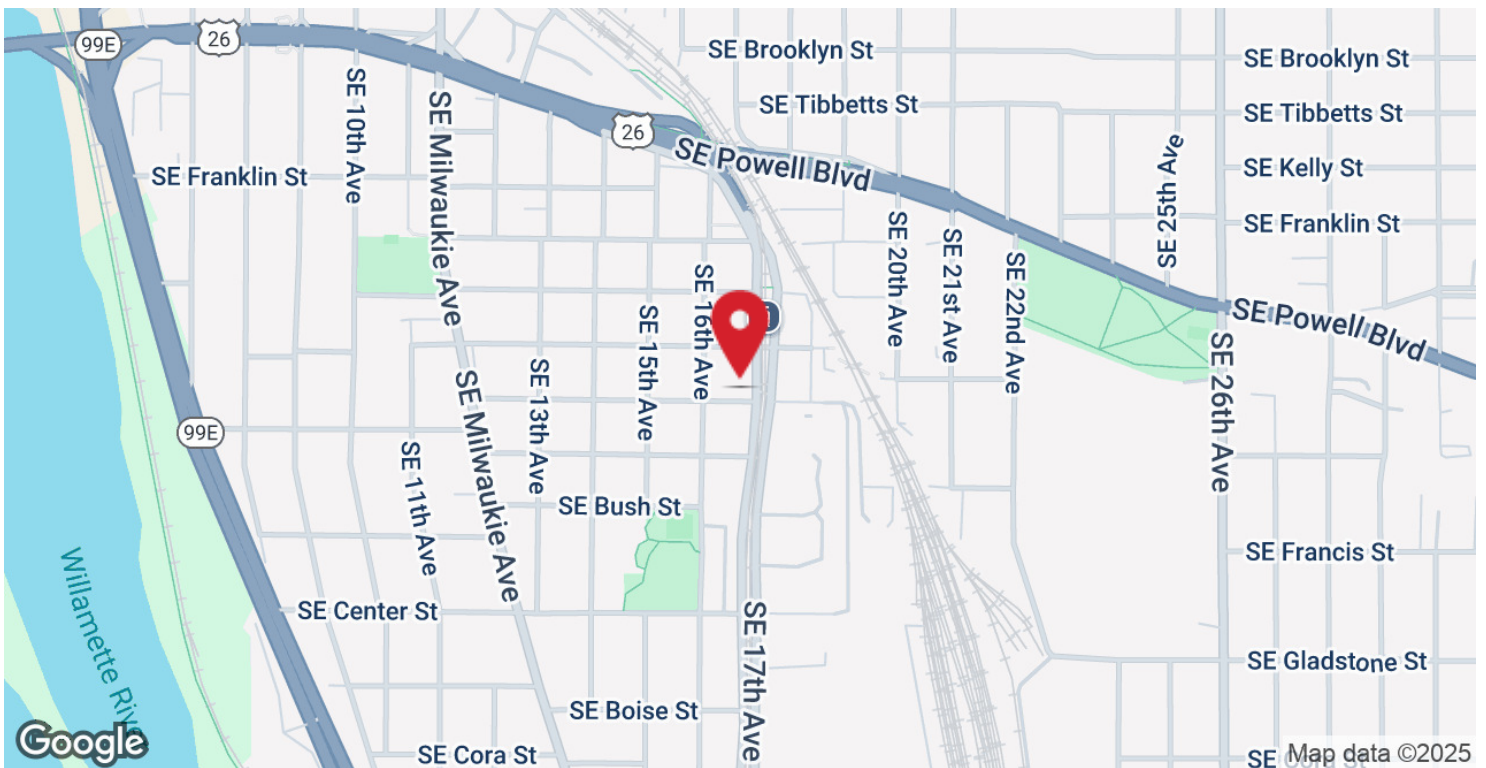
Main 586 Sq ft (Measured from Exterior)

MARISSA LEE

Commercial Broker
Marissa@CommercialRENW.com
971.280.2222

Commercial Real Estate NW
7320 SW Hunziker Rd, Ste 203
Tigard, OR 97223
CommercialRENW.com

FOR LEASE | OFFICE: +/- 586 SF
1623 SE LAFAYETTE STREET, PORTLAND, OR 97202



MARISSA LEE

Commercial Broker
Marissa@CommercialRENW.com
971.280.2222

Commercial Real Estate NW
7320 SW Hunziker Rd, Ste 203
Tigard, OR 97223
CommercialRENW.com

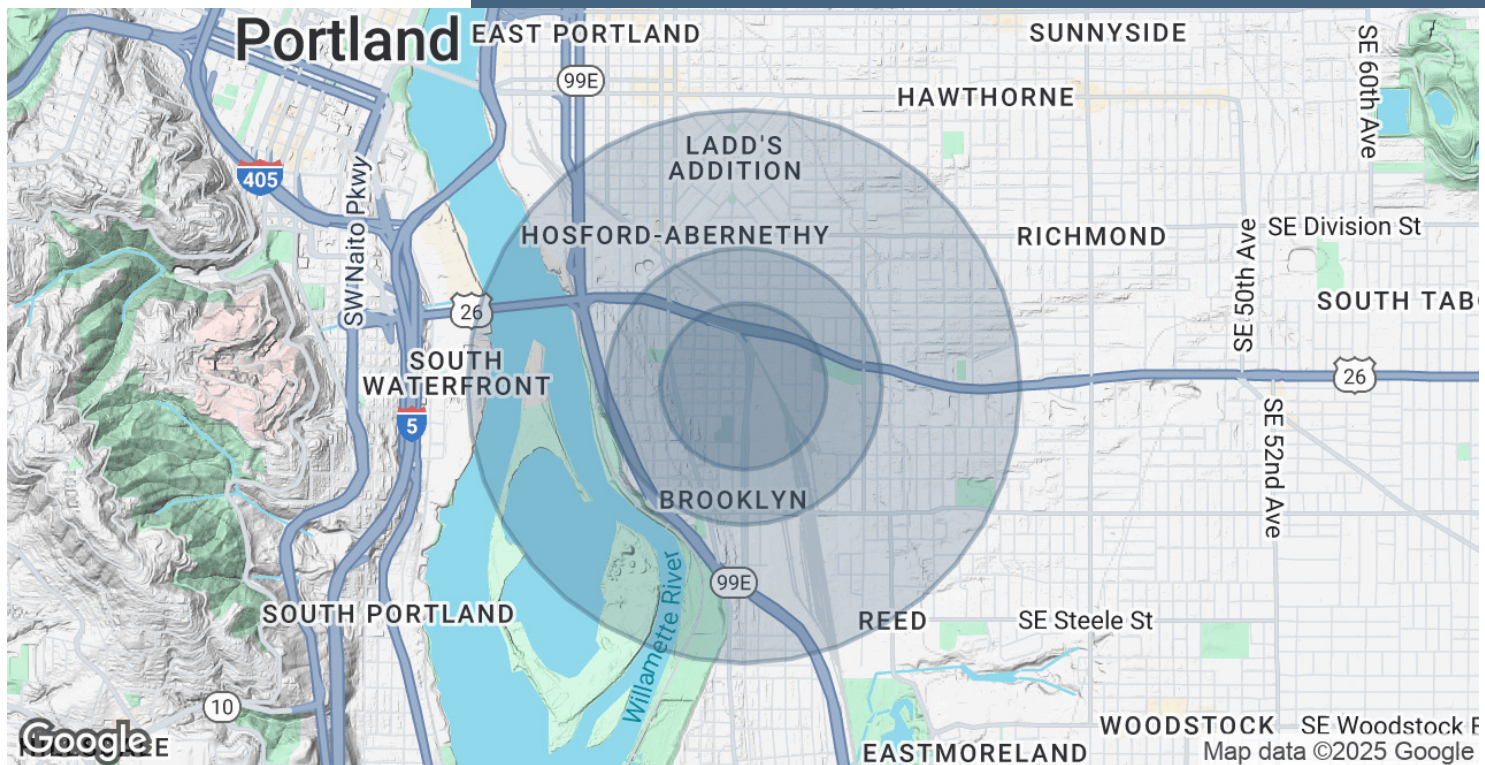
FOR LEASE | OFFICE: +/- 586 SF
1623 SE LAFAYETTE STREET, PORTLAND, OR 97202



MARISSA LEE
Commercial Broker
Marissa@CommercialRENW.com
971.280.2222

Commercial Real Estate NW
7320 SW Hunziker Rd, Ste 203
Tigard, OR 97223
CommercialRENW.com

FOR LEASE | OFFICE: +/- 586 SF
1623 SE LAFAYETTE STREET, PORTLAND, OR 97202



POPULATION	0.3 MILES	0.5 MILES	1 MILE
Total Population	735	5,032	20,315
Average Age	39	39	41
Average Age (Male)	39	39	41
Average Age (Female)	39	39	41

HOUSEHOLDS & INCOME	0.3 MILES	0.5 MILES	1 MILE
Total Households	340	2,352	9,550
# of Persons per HH	2.2	2.1	2.1
Average HH Income	\$134,773	\$122,683	\$127,786
Average House Value	\$766,510	\$712,991	\$785,484

Demographics data derived from AlphaMap

MARISSA LEE
Commercial Broker
Marissa@CommercialRENW.com
971.280.2222

Commercial Real Estate NW
7320 SW Hunziker Rd, Ste 203
Tigard, OR 97223
CommercialRENW.com