



 **NEWMARK GRUBB**  
LEVY STRANGE BEFFORT

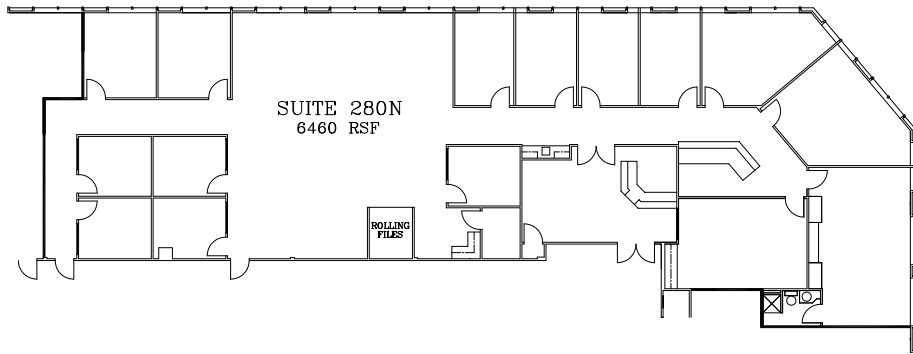
**300 Meridian Place | FOR LEASE**  
**300 N. Meridian Avenue, Oklahoma City, OK 73107**

**BRAD RICE**  
brice@newmarklsb.com  
C: 918.269.8586

204 N. Robinson, Ste 700 OKC, OK, 73102  
110 W. 7th, Ste 2600 Tulsa, OK, 74119

for more information, visit us at  
**[newmarklsb.com](http://newmarklsb.com)**

The information contained herein was obtained from sources believed reliable; however, Newmark Grubb Levy Strange Beffort makes no guarantees, warranties or representations as to the completeness or accuracy thereof. The presentation of this property is submitted subject to errors, omissions, change of price or conditions prior to sale or lease, or withdrawal without notice. Independently Owned and Operated.



### PROPERTY SNAPSHOT

North Building	
Suite 280N	6,460 RSF
Lease Rate	\$12.00/SF
Lease Type	Full Service Gross
Lease Term	3 - 5 Years

### PROPERTY OVERVIEW

This multi-tenant office building was built in 1982 and renovated in 2009. The main entry has been refurbished with Venezuelan marble floors, imported chandeliers, and the construction of a security guard desk. The building has on-site security and controlled 24 hour access, as well as, high-speed data/communications connectivity. Additionally, all restrooms have been renovated and updated as well. Twenty-four hour tenant controlled HVAC available.



### PROPERTY HIGHLIGHTS

Large floor plates for tenant of any size	Ample surface parking
On-site security	Convenient to I-40 and airport
Controlled building access	Restaurants and hotels within 1 mile

