



COMMERCIAL REALTY SOLUTIONS

For Lease
Industrial
Building



MONTICELLO

Industrial Building

Lease Rate: Office - \$11.00/psf Warehouse - \$8.00/psf

Building Size: 16,670/sf

112 Dundas Road, Monticello, MN 55362

Joseph Elam, Broker
320.282.8410
JElam@Crs-Mn.com

Wayne Elam, Broker
763.229.4982
WElam@Crs-Mn.com



PROPERTY LOCATION

- * Located East of Highway 25 on Dundas Road
- * Minutes from I-94
- * Easy Access to Highway and Interstate
- * Businesses in the Area:
Fleet Farm, Kwik Trip, Target, Auto Zone, Subway,
Dollar Tree, Taco John's, Arby's, JME, Aldi's, Walmart
and many more.

TRAFFIC COUNTS - 2025

- * I-94 - 55,770 VPD
- * Highway 25 - 23,957 VPD
- * Dundas Road - 1,888 VPD



The information contained herein was obtained from sources believed to be reliable, but Commercial Realty Solutions has not verified nor has any knowledge regarding the accuracy of information and makes no representation or warranty concerning the same. Therefore, Commercial Realty Solutions disclaims all liabilities in connection with any inaccuracies or incompleteness. This marketing material is for the implicit use by Commercial Realty Solutions for the marketing of their listings and is not for use by other brokerage(s).

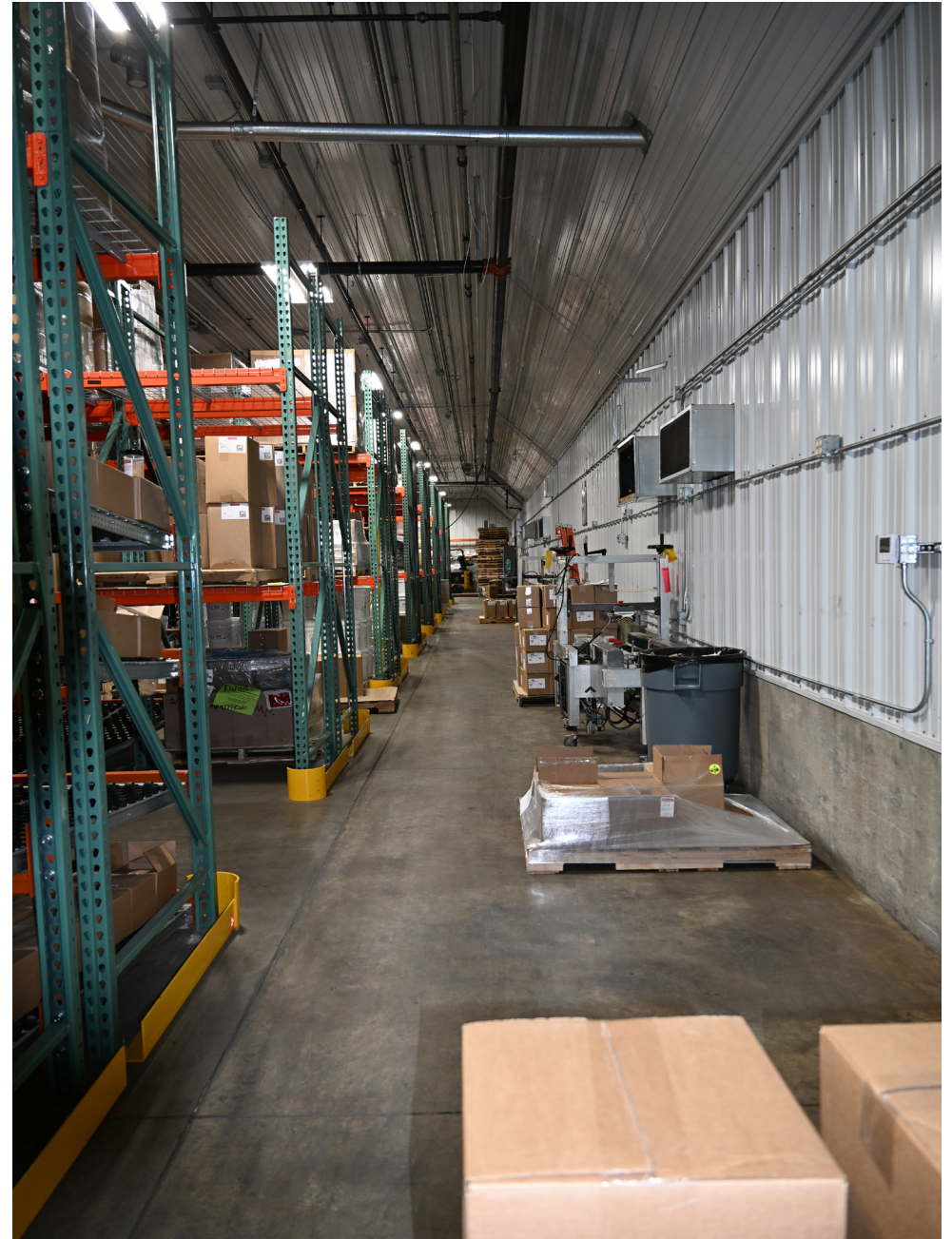
PROPERTY OVERVIEW

112 Dundas Road, Monticello, MN

Lease Rate

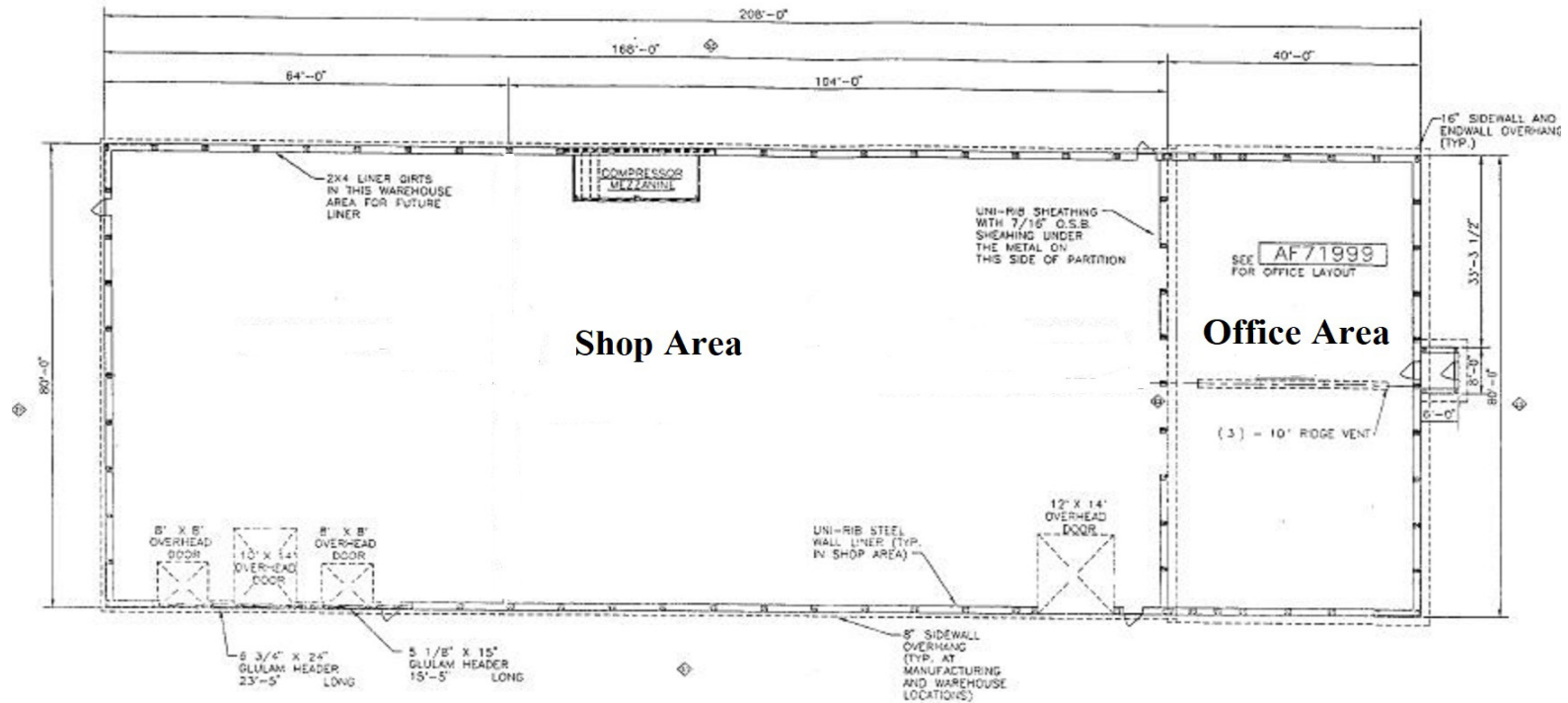
Office \$11.00/psf
Warehouse \$8.00/psf

Building Size	16,670/sf Office 40' x 80' = 3,200/sf Shop/Warehouse 13,470/sf
Lot Size	4.4 Acres
County	Wright
PID	155-018-003030
2026 Taxes	\$39,436.00
Zoned	I-2 Heavy Industrial
Built	1994



This information has been secured from sources we believe to be reliable, but we make no representations or warranties explained or implied as to the accuracy of the information. Buyer must verify the information and bears all risk for any inaccuracies.

FLOOR PLAN



BUILDING INFORMATION

- * 4 Private Offices
- * Large Reception Area
- * Conference Room
- * Shop Breakroom
- * Shop Shower
- * Radiant Heat
- * Office/Shop Air-Conditioned
- * Post Frame Construction
- * Clear Height 16'
- * 1400 Amps - 480 Volt Electrical
- * Overhead Doors:
 - (1) Drive-In 12' x 14'
 - (1) Dock High 10' x 14' (w/Leveller)
 - (2) Dock High 8' x 8' (1 w/Leveller)
- * Building Fully Sprinkled
- * Alarm System
- * Quality Control Room

This information has been secured from sources we believe to be reliable, but we make no representations or warranties explained or implied as to the accuracy of the information. Buyer must verify the information and bears all risk for any inaccuracies.

INTERIOR



This information has been secured from sources we believe to be reliable, but we make no representations or warranties explained or implied as to the accuracy of the information. Buyer must verify the information and bears all risk for any inaccuracies.

INTERIOR



This information has been secured from sources we believe to be reliable, but we make no representations or warranties explained or implied as to the accuracy of the information. Buyer must verify the information and bears all risk for any inaccuracies.

INTERIOR



This information has been secured from sources we believe to be reliable, but we make no representations or warranties explained or implied as to the accuracy of the information. Buyer must verify the information and bears all risk for any inaccuracies.