



# BOURBON LOGISTICS CENTER 7

3010 Preston Highway, Shepherdsville, Kentucky



LEASING AGENT



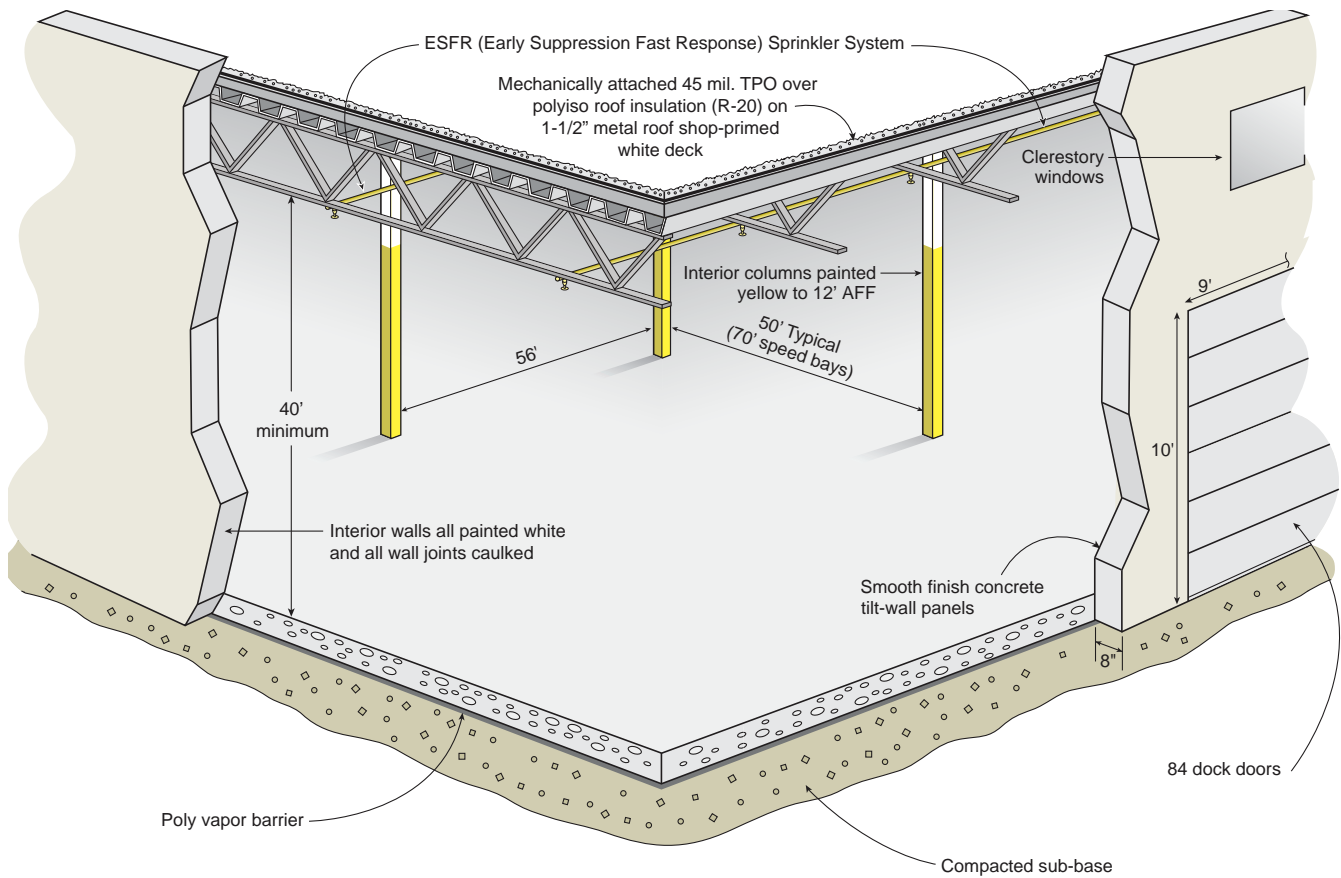
DEVELOPER

# BOURBON LOGISTICS CENTER 7

## Shepherdsville, Kentucky

Bourbon Logistics Center 7 is positioned one-half mile from I-65 at Ohm Drive in Shepherdsville, Kentucky. The location provides superior access to multiple markets. UPS Worldport is 15 miles from the site, providing strategic logistics opportunities to the end-user.

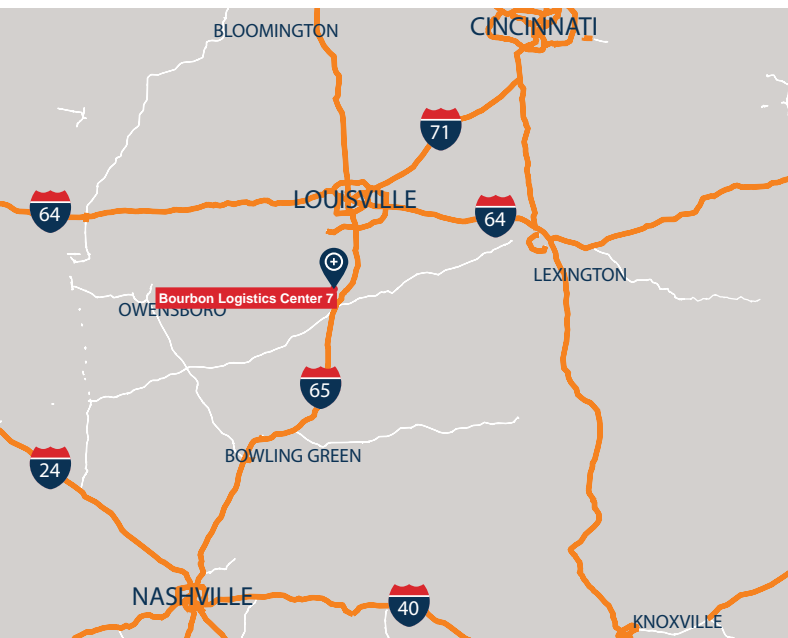
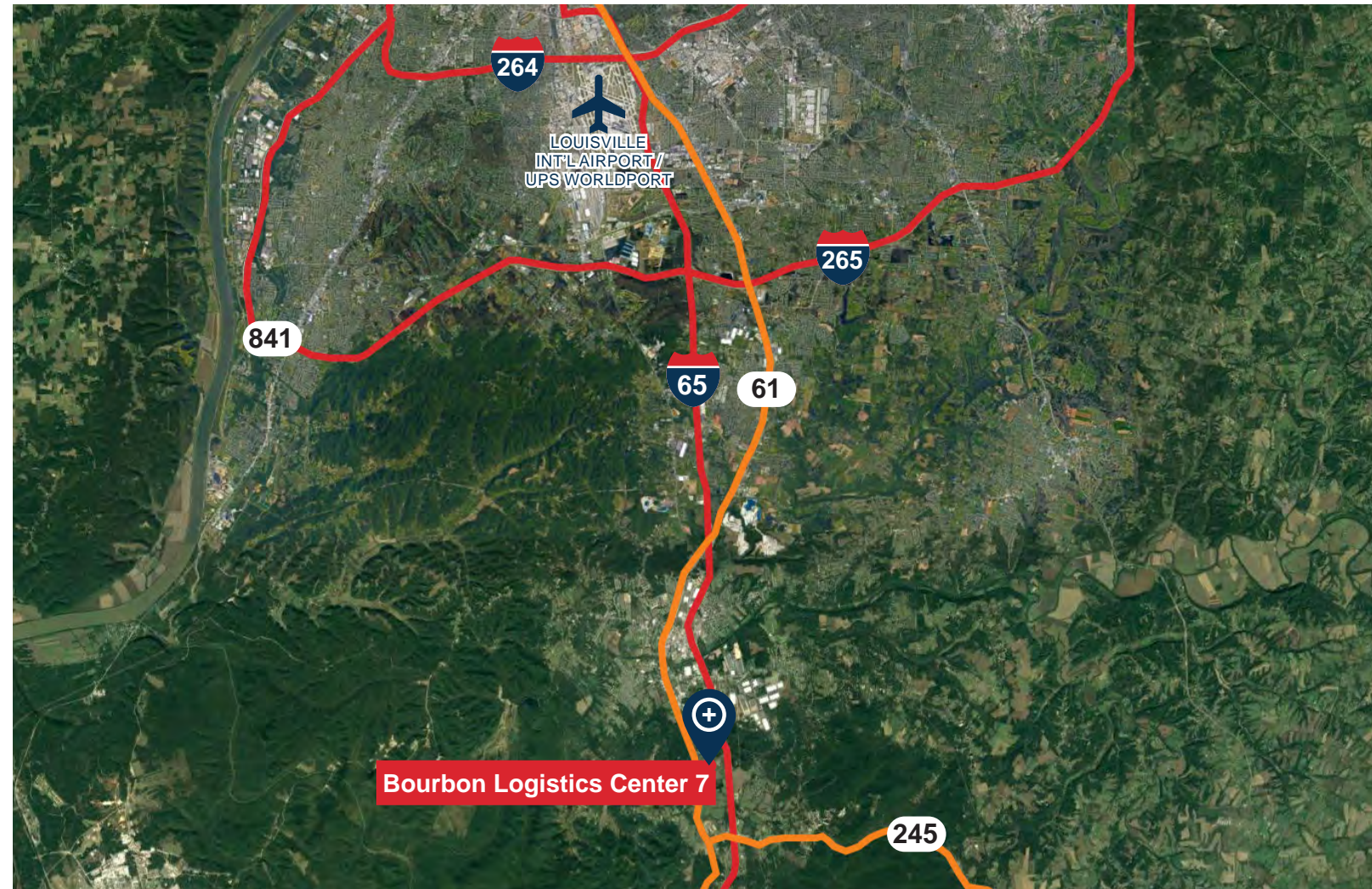




## BUILDING SPECIFICATIONS - BOURBON 7

Square Footage	840,064 SF
Office Area	12,000 SF
Site Area	60 acres
Column Spacing	50' wd x 56' dp (typical) with 70' speed bays
Clear Height	40'
Dock Doors	84 (expandable)
Drive-In Doors	2
Truck Court Depth	185'
Power	6000 Amp, 227/480 Volt, 3 Phase
Auto Parking	468 spaces (expandable)
Trailer Storage	117
Lighting	LED
Sprinkler	ESFR sprinkler system





**Doug Armbruster**  
 Senior Vice President and Managing Director  
 O 859.287.3707  
 C 513.235.3933  
[darmbruster@c5ip.com](mailto:darmbruster@c5ip.com)



**Powell Spears, SIOR**  
 Senior Managing Director  
 O 502.394.2509  
 C 502.419.7391  
[powell.spears@jll.com](mailto:powell.spears@jll.com)

**Matt Hartlage, SIOR**  
 Senior Managing Director  
 O 502.394.2517  
 C 502.807.5339  
[matt.hartlage@jll.com](mailto:matt.hartlage@jll.com)