

# GLENDALE PLAZA - GLENDALE, CA



● ● ● FOR LEASE  
± 3,500 RETAIL SPACE AVAILABLE





# PROPERTY HIGHLIGHTS



- 3,500 SF retail space available!
- Located across the street from the Glendale Fashion Center and Whole Foods
- Within close proximity of the 134 Fwy (0.35 Miles north of center)
- High visibility location with 31,423 CPD along the major artery of North Glendale Avenue.



## CO - TENANTS



## AREA RETAILERS



### Matt Haas

Vice President  
805.449.1804 ext.106  
mhaas@cypressretail.net  
License No. 01970296

### Bob Haas

Co-Founding Principal  
805.449.1804 ext.103  
rhaas@cypressretail.net  
License No. 00870324

### Anna-kay Earle

Associate Broker  
805.449.1804 ext.107  
aearle@cypressretail.net  
License No. 02241530

### North Office

4035 E Thousand Oaks Blvd Suite 230  
Westlake Village, CA 91362

[www.cypress.net](http://www.cypress.net)



# 5 - MILE RADIUS TRADE AREA

## Estimated Population

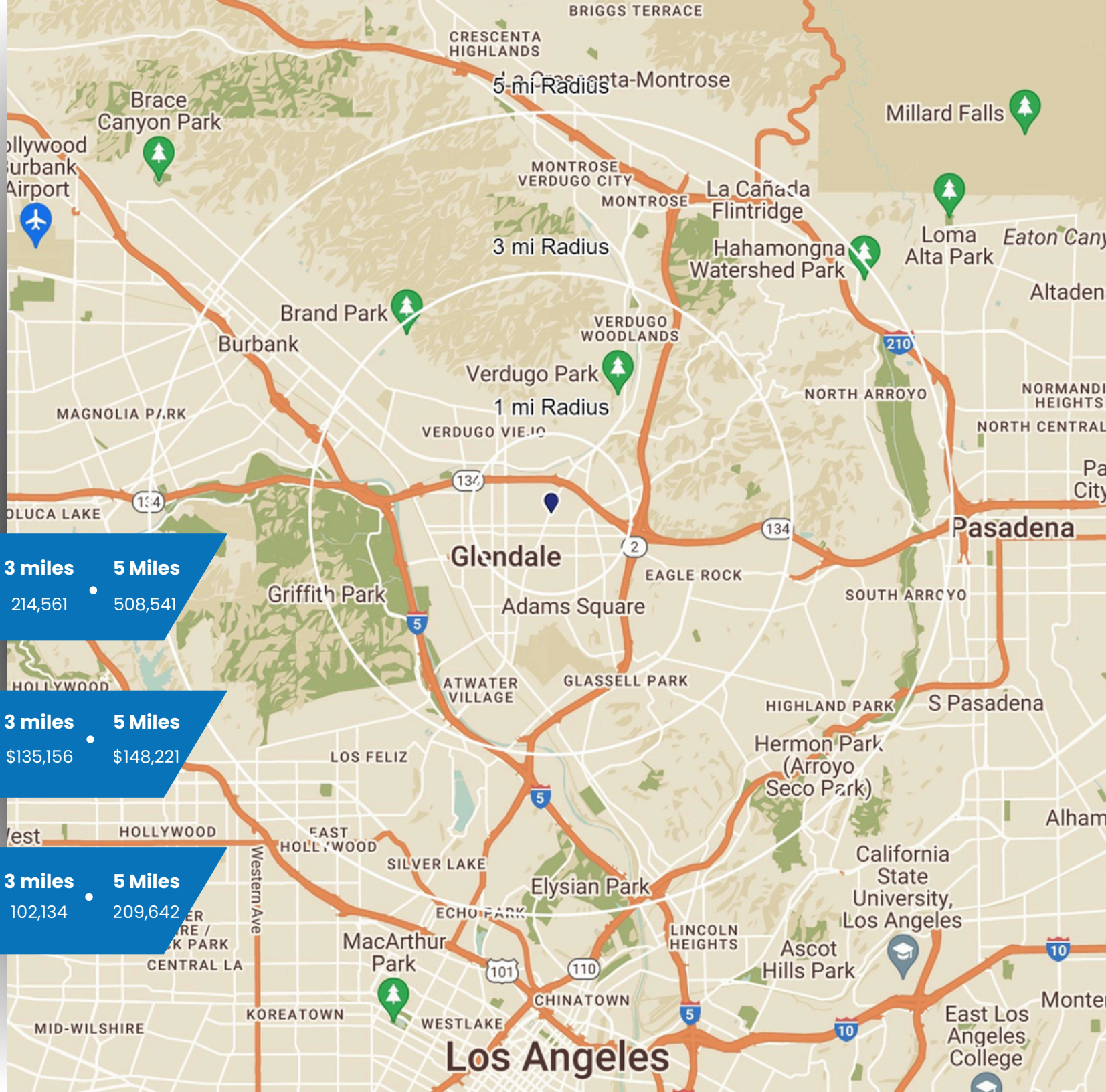
1 Mile	3 miles	5 Miles
58,357	214,561	508,541

## Avg. Household Income

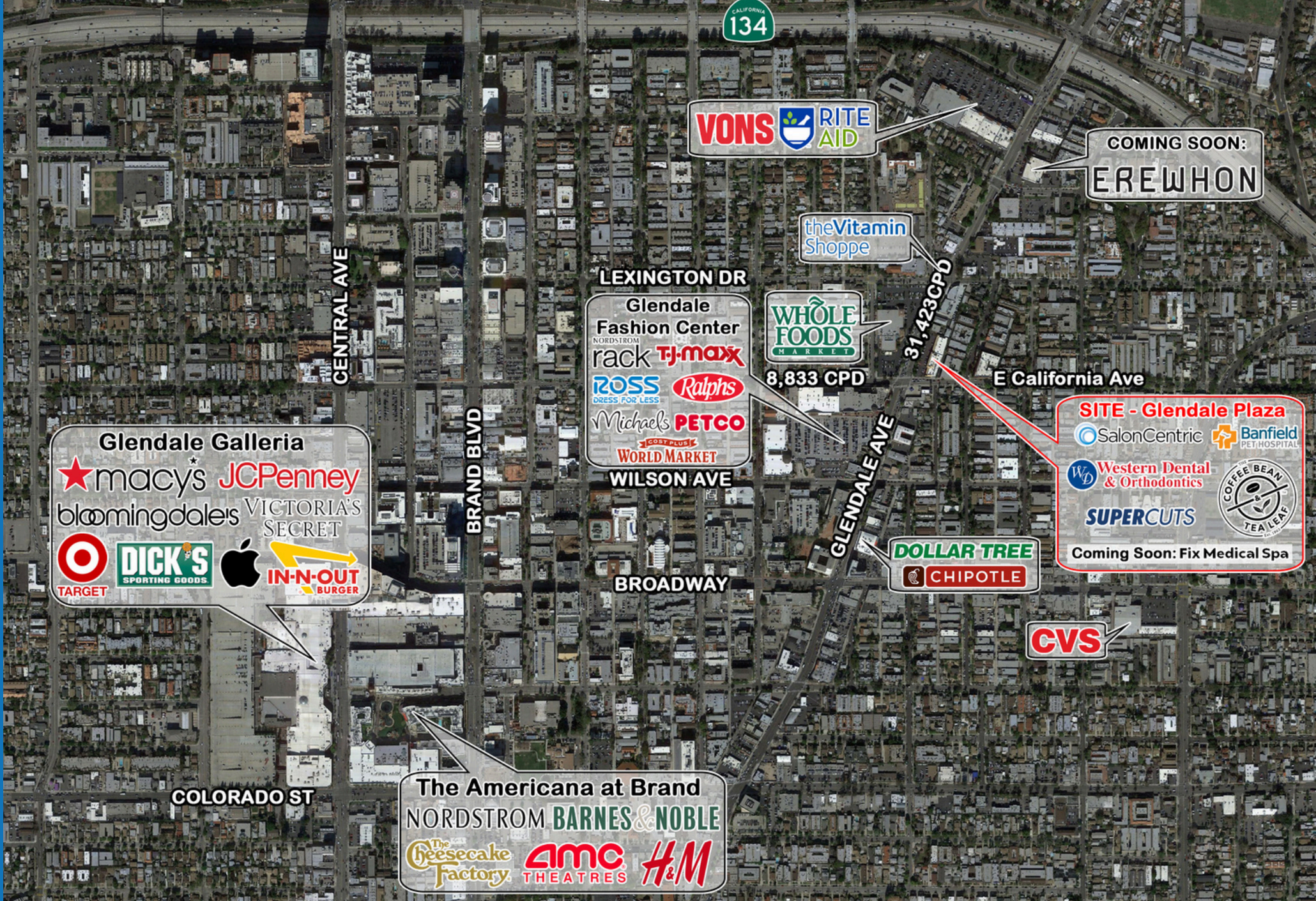
1 Mile	3 miles	5 Miles
\$106,675	\$135,156	\$148,221

## Total Employees

1 Mile	3 miles	5 Miles
44,494	102,134	209,642







**VONS** **RITE AID**

COMING SOON:  
**EREWHON**

the**Vitamin**  
Shophe

**WHOLE**  
**FOODS**  
MARKET

8,833 CPD

31,423CPD

E California Ave

**SITE - Glendale Plaza**  
SalonCentric Banfield PET HOSPITAL  
Western Dental & Orthodontics  
**SUPERCUTS**  
Coming Soon: Fix Medical Spa  
COFFEE BEAN TEA LEAF

**DOLLAR TREE**  
**CHIPOTLE**

**CVS**

**Glendale Galleria**  
★ macy's JCPenney  
bloomingdale's VICTORIA'S SECRET  
**TARGET** **DICK'S SPORTING GOODS** **Apple** **IN-N-OUT BURGER**

**LEXINGTON DR**  
Glendale Fashion Center  
NORDSTROM rack **TJ-maxx**  
**ROSS** **Ralphs**  
DRESS FOR LESS  
Michaels **PETCO**  
COST PLUS **WORLD MARKET**  
**WILSON AVE**

**BROADWAY**

**The Americana at Brand**  
NORDSTROM **BARNES & NOBLE**  
**The Cheesecake Factory** **AMC THEATRES** **H&M**

**COLORADO ST**

**CENTRAL AVE**

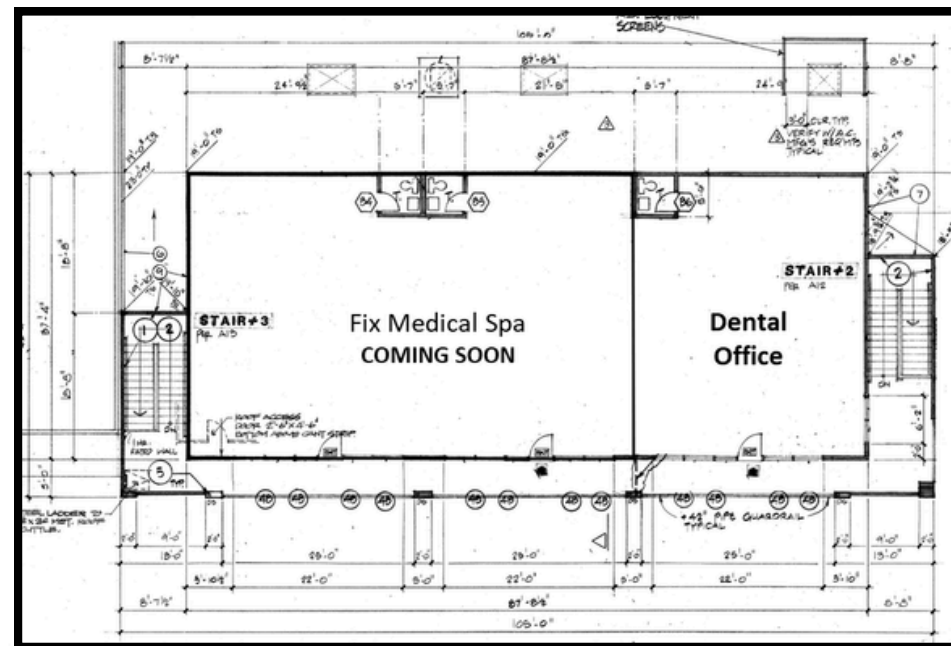
**BRAND BLVD**

**GLENDAL AVE**

**AERIAL**



# SITE PLAN

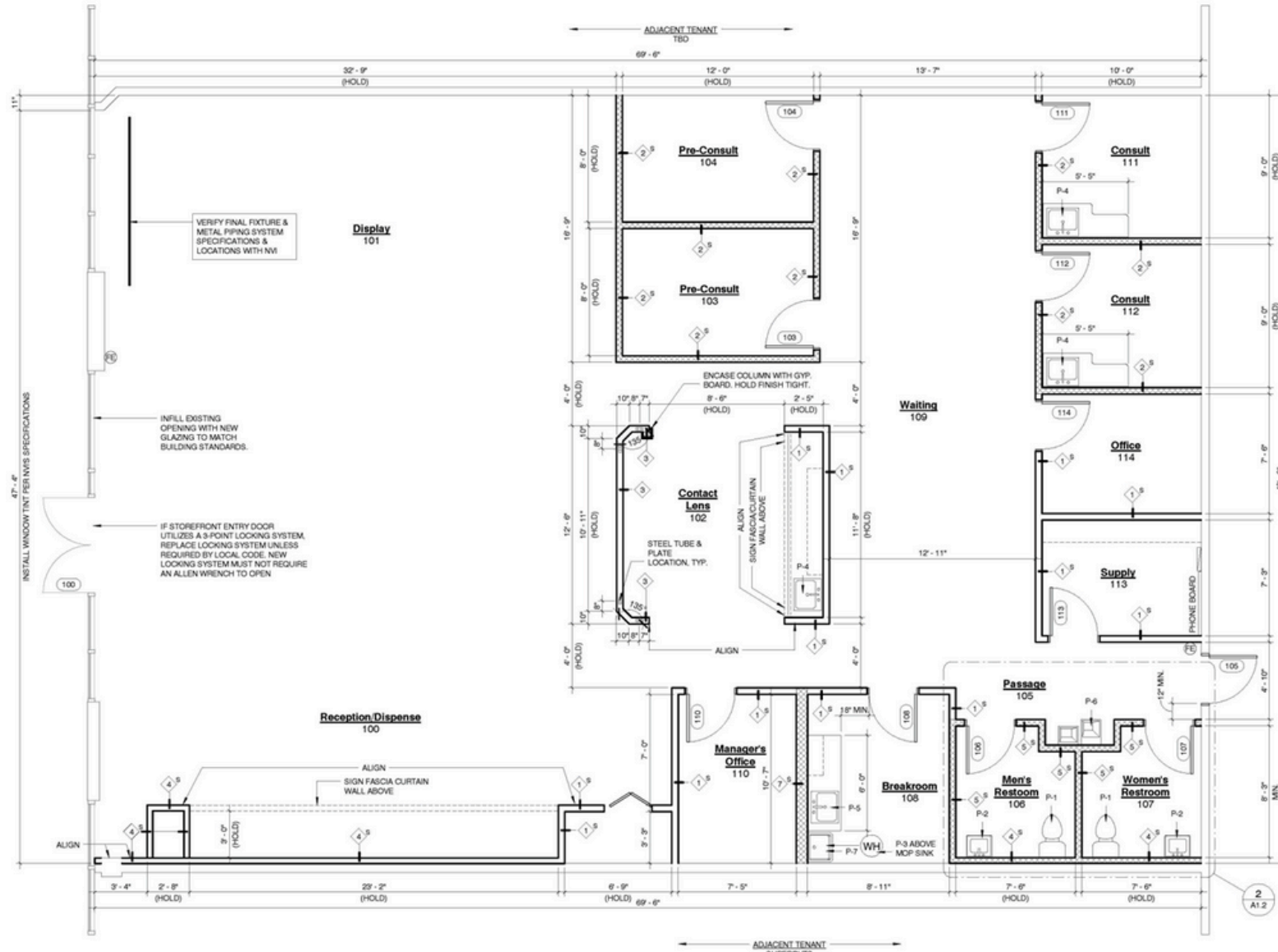




# FLOOR PLAN – 3,500 SF SPACE AVAILABLE

C:\Users\ian

5/26/2017  
10:13:53 AM



## 1 CONSTRUCTION FLOOR PLAN

A1.2 1/4" = 1'-0"

LOADS



# CONTACT US



**Matt Haas**

Vice President

805.449.1804 ext.106

[mhaas@cypressretail.net](mailto:mhaas@cypressretail.net)

License No. 01970296



**Bob Haas**

Co-Founding Principal

805.449.1804 ext.103

[rhaas@cypressretail.net](mailto:rhaas@cypressretail.net)

License No. 00870324



**Anna-Kay Earle**

Associate Broker

805.449.1804 ext.107

[aearle@cypressretail.net](mailto:aearle@cypressretail.net)

License No. 02241530

## North Office

4035 E Thousand Oaks Blvd Suite 230  
Westlake Village, CA 91362

[www.cypress.net](http://www.cypress.net)

NORTH OFFICE

SOUTH OFFICE

The information provided herein is intended as a general depiction of the property and is subject to change. This information has been obtained by sources deemed reliable. The information has not been independently verified and Cypress Retail Group and its agents do not warrant or represent that the information provided is accurate. Individuals are solely responsible for verifying information related to the property and its suitability for the individual's use.