

6018 Clearwater

6018 Clearwater , Kennewick WA 99336

FOR LEASE



Prepared By:

Timothy Bush

Bush Realty
Commercial Broker
(509) 947-7905
tj@bushrealty.us



THE SPACE

Location	6018 Clearwater Kennewick , WA 99336
County	Benton
Square Feet	4,000
Annual Rent PSF	\$26.00
Lease Type	NNN

Notes Space can be divided.

HIGHLIGHTS

- Prime Commercial Space for Lease in Kennewick, WA Take advantage of this incredible opportunity to lease a brand new commercial space in a prime location right on Kennewick's main street, Clearwater. With a daily traffic count exceeding 17,000 vehicles, your business will benefit from unmatched visibility and convenience in a highly desirable central location. Space Options: Entire building: 4,100 sq. ft. Option to split: Two, 2,050 sq. ft. spaces Pricing: \$26.00 per sq. ft. annually \$5.00 per sq. ft. Triple Net (NNN) 5% monthly management fee Features: Shell building included, with Tenant Improvements negotiable to suit your business needs. Prime central location with easy access and high exposure. Whether you're an established business or a new venture, this premium space offers the flexibility and visibility to thrive. Contact us today for more information and secure your spot in one of Kennewick's most sought-after commercial locations!



POPULATION

1.00 MILE	3.00 MILE	5.00 MILE
10,810	70,227	176,743

AVERAGE HOUSEHOLD INCOME

1.00 MILE	3.00 MILE	5.00 MILE
\$76,314	\$103,527	\$110,524

NUMBER OF HOUSEHOLDS

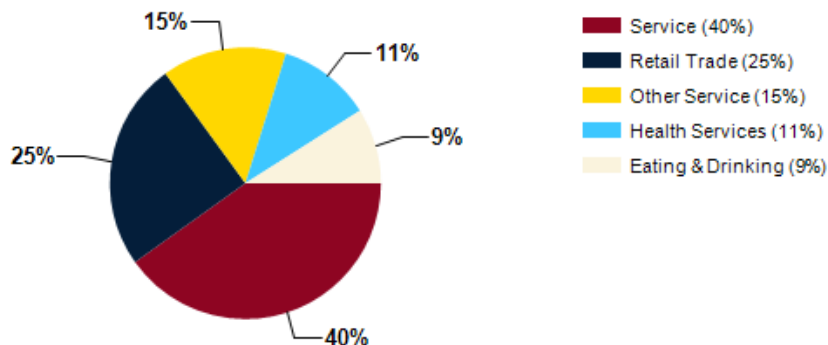
1.00 MILE	3.00 MILE	5.00 MILE
4,195	27,081	63,057



Timothy Bush
Commercial Broker
(509) 947-7905
tj@bushrealty.us

- The property is located in Kennewick, Washington, which is part of the Tri-Cities area along the Columbia River. Kennewick is known for its outdoor recreational activities, including parks, trails, and water sports on the river.
- Clearwater Avenue is a major thoroughfare in Kennewick, offering high visibility and accessibility for businesses. The street is lined with a mix of commercial establishments, including restaurants, retail stores, and service providers.
- The surrounding area is a vibrant commercial hub with a diverse mix of businesses, such as the Columbia Center Mall, which is a popular shopping destination in the region. Other nearby attractions include restaurants, hotels, and entertainment venues.
- Kennewick has a growing population and a strong economy driven by industries like agriculture, healthcare, and manufacturing. This provides a solid customer base for businesses in the area and contributes to the overall vitality of the local economy.
- The property's proximity to major highways, such as Highway 395 and I-82, makes it easily accessible for customers and employees. This convenient location can attract more foot traffic and enhance the property's visibility to potential customers.

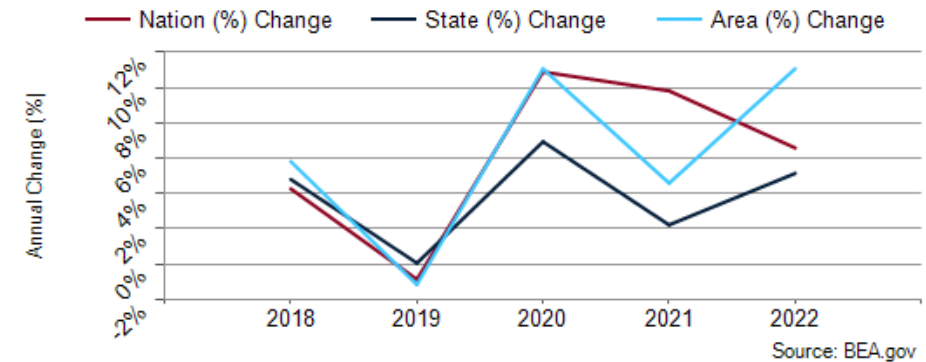
Major Industries by Employee Count



Largest Employers

Battelle/Pacific Northwest National Laboratory	5,300
Kadlec Regional Medical Center	3,800
Kennewick School District	3,043
Lamb Weston	3,000
Washington River Protection Solutions	2,336
Pasco School District	2,700
First Fruits Farms	3,000
Richland School District	2,200

Benton County GDP Trend



Timothy Bush
Commercial Broker
(509) 947-7905
tj@bushrealty.us



Traffic Counts | 6018 Clearwater



Timothy Bush
Commercial Broker
(509) 947-7905
tj@bushrealty.us





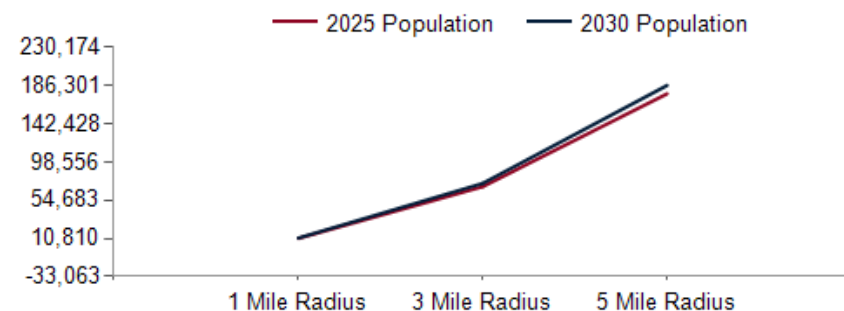




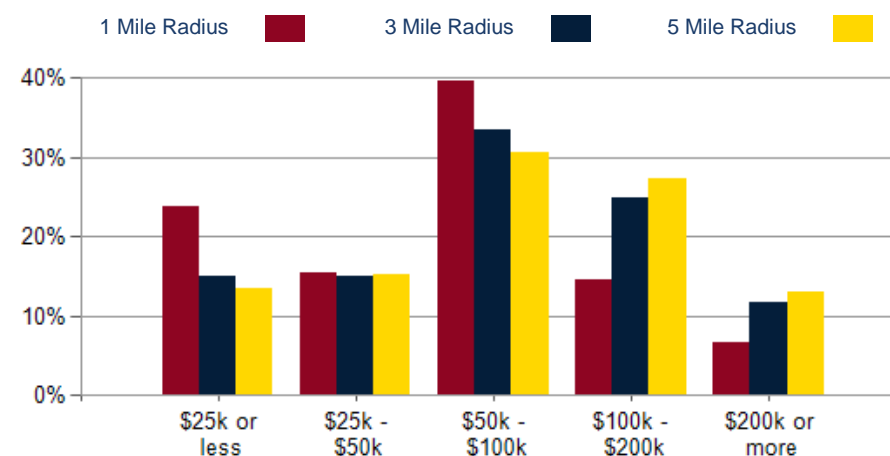


POPULATION	1 MILE	3 MILE	5 MILE
2000 Population	7,642	42,920	96,227
2010 Population	10,045	55,122	137,997
2025 Population	10,810	70,227	176,743
2030 Population	11,238	73,913	186,301
2025 African American	275	1,344	3,209
2025 American Indian	162	843	2,046
2025 Asian	254	2,186	5,736
2025 Hispanic	4,085	20,506	64,140
2025 Other Race	2,372	10,317	33,054
2025 White	6,196	45,889	106,605
2025 Multiracial	1,523	9,389	25,439
2025-2030: Population: Growth Rate	3.90%	5.15%	5.30%

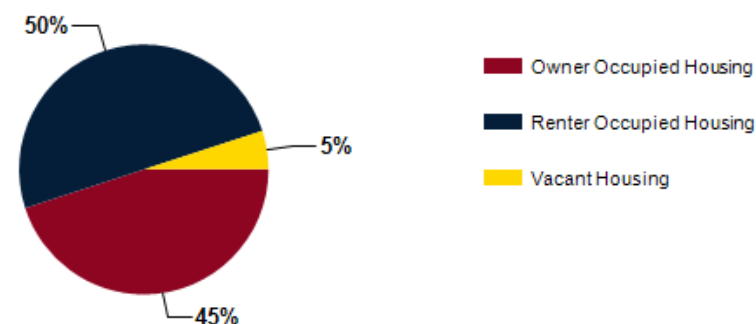
2025 HOUSEHOLD INCOME	1 MILE	3 MILE	5 MILE
less than \$15,000	736	2,744	4,956
\$15,000-\$24,999	260	1,306	3,593
\$25,000-\$34,999	279	1,582	3,954
\$35,000-\$49,999	372	2,464	5,707
\$50,000-\$74,999	907	4,947	9,597
\$75,000-\$99,999	752	4,133	9,727
\$100,000-\$149,999	488	4,397	11,102
\$150,000-\$199,999	126	2,362	6,167
\$200,000 or greater	275	3,146	8,254
Median HH Income	\$63,067	\$77,266	\$82,840
Average HH Income	\$76,314	\$103,527	\$110,524



2025 Household Income



2025 Own vs. Rent - 1 Mile Radius



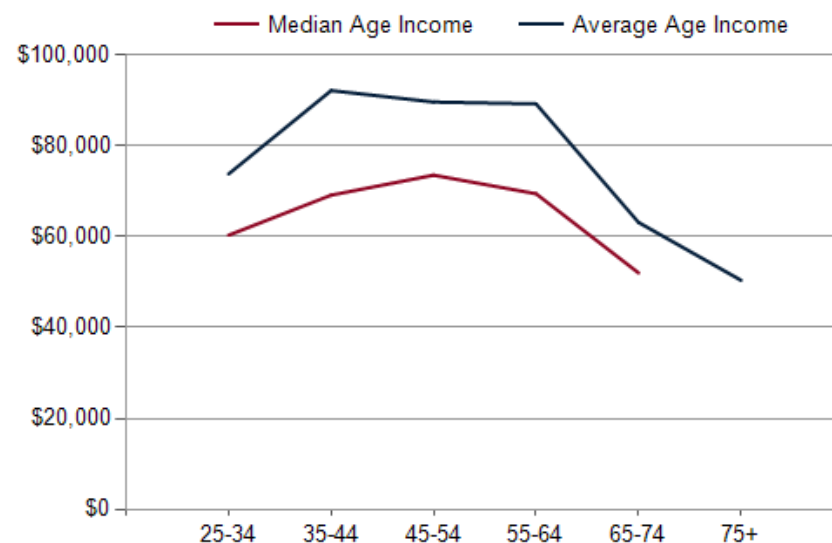
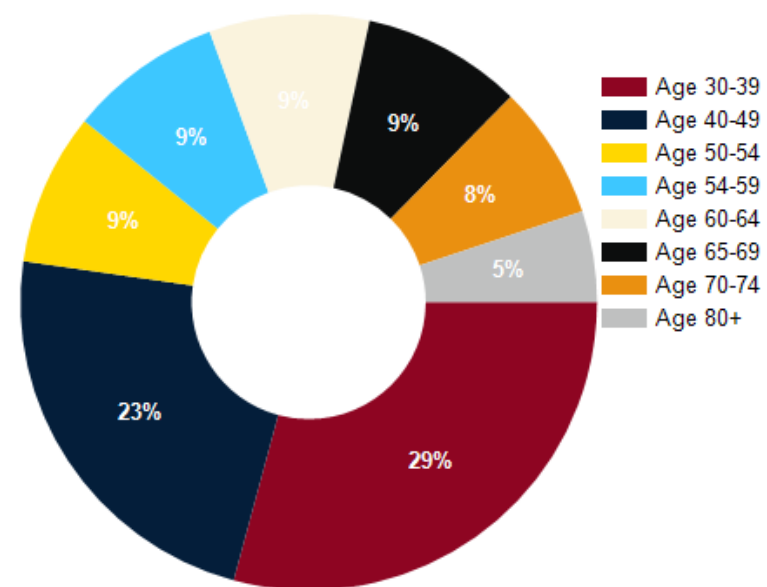
Source: esri



Timothy Bush
Commercial Broker
(509) 947-7905
tj@bushrealty.us

2025 POPULATION BY AGE	1 MILE	3 MILE	5 MILE
2025 Population Age 30-34	864	5,019	12,608
2025 Population Age 35-39	776	4,937	12,441
2025 Population Age 40-44	673	4,707	12,230
2025 Population Age 45-49	624	4,066	10,468
2025 Population Age 50-54	480	3,499	9,208
2025 Population Age 55-59	483	3,372	8,278
2025 Population Age 60-64	504	3,553	8,494
2025 Population Age 65-69	504	3,665	8,409
2025 Population Age 70-74	423	3,353	7,310
2025 Population Age 75-79	287	2,487	5,423
2025 Population Age 80-84	177	1,669	3,364
2025 Population Age 85+	190	1,621	2,918
2025 Population Age 18+	8,025	53,206	130,097
2025 Median Age	33	37	35
2030 Median Age	35	38	36

2025 INCOME BY AGE	1 MILE	3 MILE	5 MILE
Median Household Income 25-34	\$60,337	\$78,098	\$83,478
Average Household Income 25-34	\$73,830	\$100,241	\$105,546
Median Household Income 35-44	\$69,160	\$95,175	\$100,888
Average Household Income 35-44	\$92,193	\$127,186	\$129,886
Median Household Income 45-54	\$73,567	\$98,778	\$103,379
Average Household Income 45-54	\$89,670	\$128,634	\$134,625
Median Household Income 55-64	\$69,469	\$85,969	\$92,543
Average Household Income 55-64	\$89,282	\$114,534	\$123,286
Median Household Income 65-74	\$52,044	\$70,079	\$73,604
Average Household Income 65-74	\$63,170	\$92,043	\$97,908
Average Household Income 75+	\$50,411	\$65,350	\$68,767



Timothy Bush
Commercial Broker
(509) 947-7905
tj@bushrealty.us



Timothy Bush
Commercial Broker

We're TJ and Amanda Bush—Tri-Cities natives and high school sweethearts with deep roots in this community. Married 23 years and though some think it's strange we truly love working with each other. We have 2 boys, 21 and 17, that are truly such a gift. Our faith is extremely important to us, it's what keeps us grounded, humble and accountable.

After spending 20 years working side by side at our family-owned dealership—TJ as General Manager and Amanda as Office Manager—we transitioned our passion for business into real estate. Amanda earned her license in 2020 and has since built a reputation in residential real estate for her thoughtful, relationship-driven approach to every transaction. TJ brings over a decade of experience in commercial development, having built, managed, and invested in a wide range of properties and businesses. His perspective as both a developer and commercial investor gives him a unique understanding of the market from all sides—owner, tenant, and now, commercial agent. While we're not affiliated with a large corporate brokerage, that's by design. We believe in a more personal, hands-on approach where every client and property gets the time, care, and strategy it deserves. We're committed, driven, and deeply invested in helping our clients succeed and our community grow.



Timothy Bush
Commercial Broker
(509) 947-7905
tj@bushrealty.us

CONFIDENTIALITY and DISCLAIMER

The information contained in the following offering memorandum is proprietary and strictly confidential. It is intended to be reviewed only by the party receiving it from Bush Realty and it should not be made available to any other person or entity without the written consent of Bush Realty.

By taking possession of and reviewing the information contained herein the recipient agrees to hold and treat all such information in the strictest confidence. The recipient further agrees that recipient will not photocopy or duplicate any part of the offering memorandum. If you have no interest in the subject property, please promptly return this offering memorandum to Bush Realty. This offering memorandum has been prepared to provide summary, unverified financial and physical information to prospective tenants, and to establish only a preliminary level of interest in the subject property.

The information contained herein is not a substitute for a thorough due diligence investigation. Bush Realty has not made any investigation, and makes no warranty or representation with respect to the income or expenses for the subject property, the future projected financial performance of the property, the size and square footage of the property and improvements, the presence or absence of contaminating substances, PCBs or asbestos, the compliance with local, state and federal regulations, the physical condition of the improvements thereon, or financial condition or business prospects of any tenant, or any tenant's plans or intentions to continue its occupancy of the subject property.

The information contained in this offering memorandum has been obtained from sources we believe reliable; however, Bush Realty has not verified, and will not verify, any of the information contained herein, nor has Bush Realty conducted any investigation regarding these matters and makes no warranty or representation whatsoever regarding the accuracy or completeness of the information provided. All potential buyers must take appropriate measures to verify all of the information set forth herein. Prospective buyers shall be responsible for their costs and expenses of investigating the subject property.

Exclusively Marketed by:



Timothy Bush

Bush Realty
Commercial Broker
(509) 947-7905
tj@bushrealty.us

