

FOR LEASE | TWO SUITES AVAILABLE

1120 S LAPEER RD



1120 S LAPEER RD
OXFORD, MI 48371

PROPERTY HIGHLIGHTS:

- Great Oxford office location on well trafficked Lapeer Rd. - Two Suites Available
- Owner offering a full service lease. Rent includes utilities, taxes, insurance and common area maintenance
- Suite 200 is 1,300 SF, has three private offices, a large open area, and professionally finished office accents
- Suite 250 is 1,189 SF, has four private offices, and an open area for reception or conference room
- Free surface parking and monument signage on Lapeer Rd.
- Located on the south side of Oxford and minutes to both downtown Oxford and Lake Orion
- Low full service lease rate of \$16.50/SF
- Owner takes pride in the presentation of the building and occupies the first floor

The information provided herein along with any attachment(s) was obtained from sources believed to be reliable, however, Friedman Real Estate makes no guarantees, warranties, or representations as to the completeness or accuracy of such information and legal counsel is advised. All information provided is subject to verification and no liability for reliance on such information or errors or omissions is assumed. The presentation of this property is submitted subject to errors, omissions, change of price or conditions, prior sale or lease, or withdrawal without notice. Copyright © 2025 Friedman Real Estate. All rights reserved.

FOR MORE INFORMATION PLEASE CONTACT:

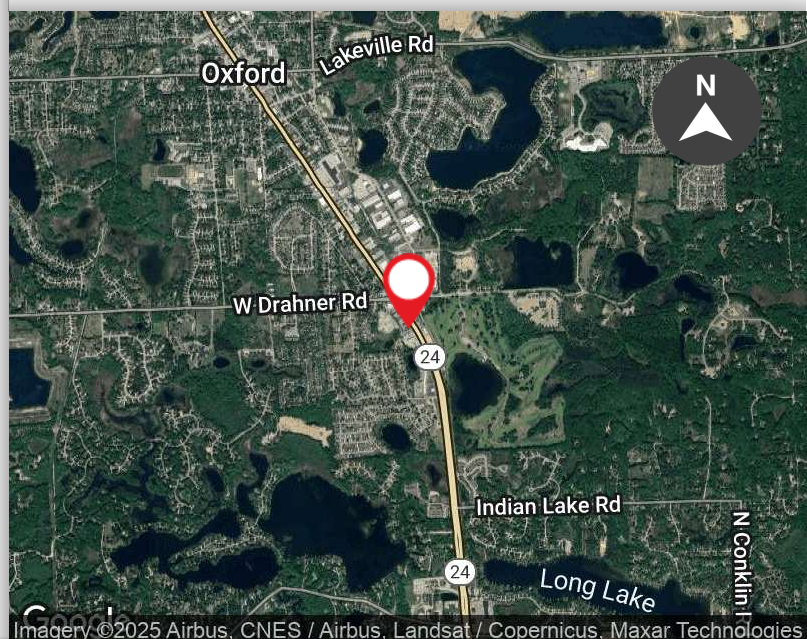


LARRY SCHULTZ

Vice President, Brokerage Services
larry.schultz@freg.com

248.324.2000

eCODE 415



1120 S LAPEER RD

PROPERTY **AVAILABILITY**



AVAILABLE SUITES

SPACE	SPACE USE	LEASE RATE	LEASE TYPE	SIZE (SF)
Suite 200	Office	\$1,788 per month	Full Service	1,300 SF
Suite 250	Office	\$1,635 per month	Full Service	1,189 SF

1120 S LAPEER RD
PROPERTY **PHOTOS**



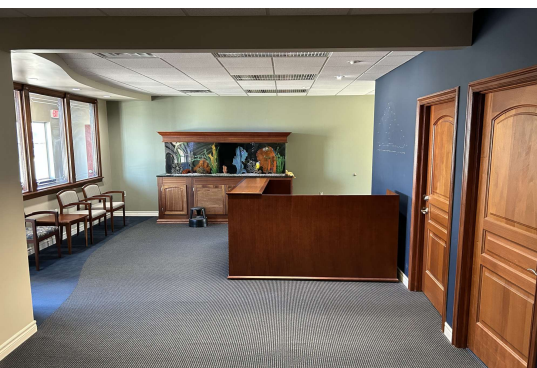
1120 S LAPEER RD SUITE 200 FLOOR PLAN



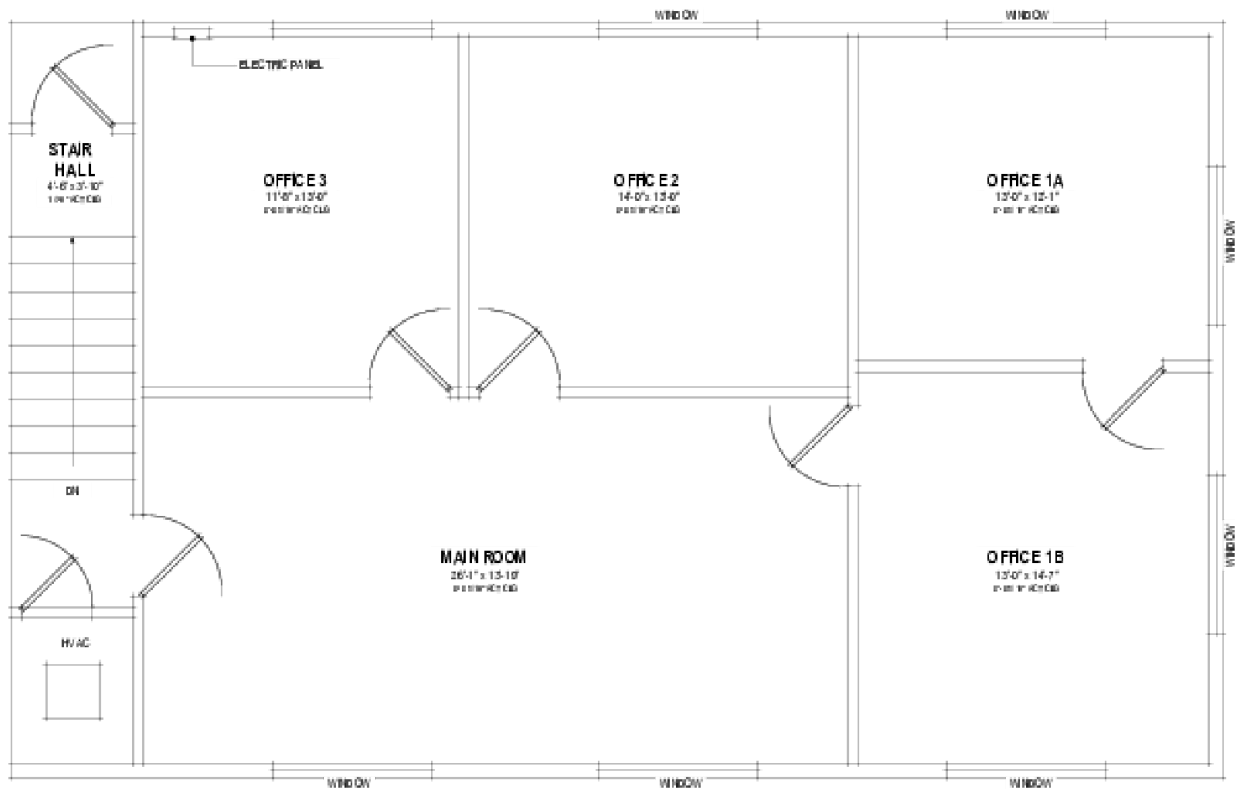
1120 S LAPEER RD. OXFORD, MI 48371

THIRD FLOOR PLAN
1/4" = 1'-0"

AVAILABLE
 LEASED



1120 S LAPEER RD SUITE 250 FLOOR PLAN



1120 S LAPEER RD., SUITE 250
OXFORD, MI 48871

