

# 30200 PACIFIC HWY S

FOR SALE: \$2,975,000

FEDERAL WAY, WA 98003

## 4.26 ACRE PACIFIC HIGHWAY SOUTH DEVELOPMENT PROPERTY



### SALE INFORMATION

Land Size:	4.26 Acres (185,708 SF)
Zoning:	Community Business - BC
Sale Price	\$2,975,000
Parcel #:	0421049257

[Press for Zoning Information](#)

### PROPERTY INFORMATION

- Over 25,000 vehicles passing per day
- Approximately 760 ft of frontage on Pacific Hwy S.
- 35' maximum building height
- Potential uses include automotive, multifamily, senior living, schools, day cares, churches, office, retail, recreation, mini-storage, and more
- Seller will consider all reasonable offers



**BRUCE HEMMAT**  
206.787.1461  
bhemmat@neilwalter.com

**GRIFFIN DAY**  
206.787.1474  
gday@neilwalter.com

All information references in this document are approximate. The information contained herein is contained from sources deemed reliable. It is provided without representation, warranty, or guarantee, expressed or implied as to accuracy. Prospective buyer or tenant should conduct its own independent investigation relating to the property, government codes and regulations, allowed uses, and all other matters, regardless of whether they are referred to or contained in this document.



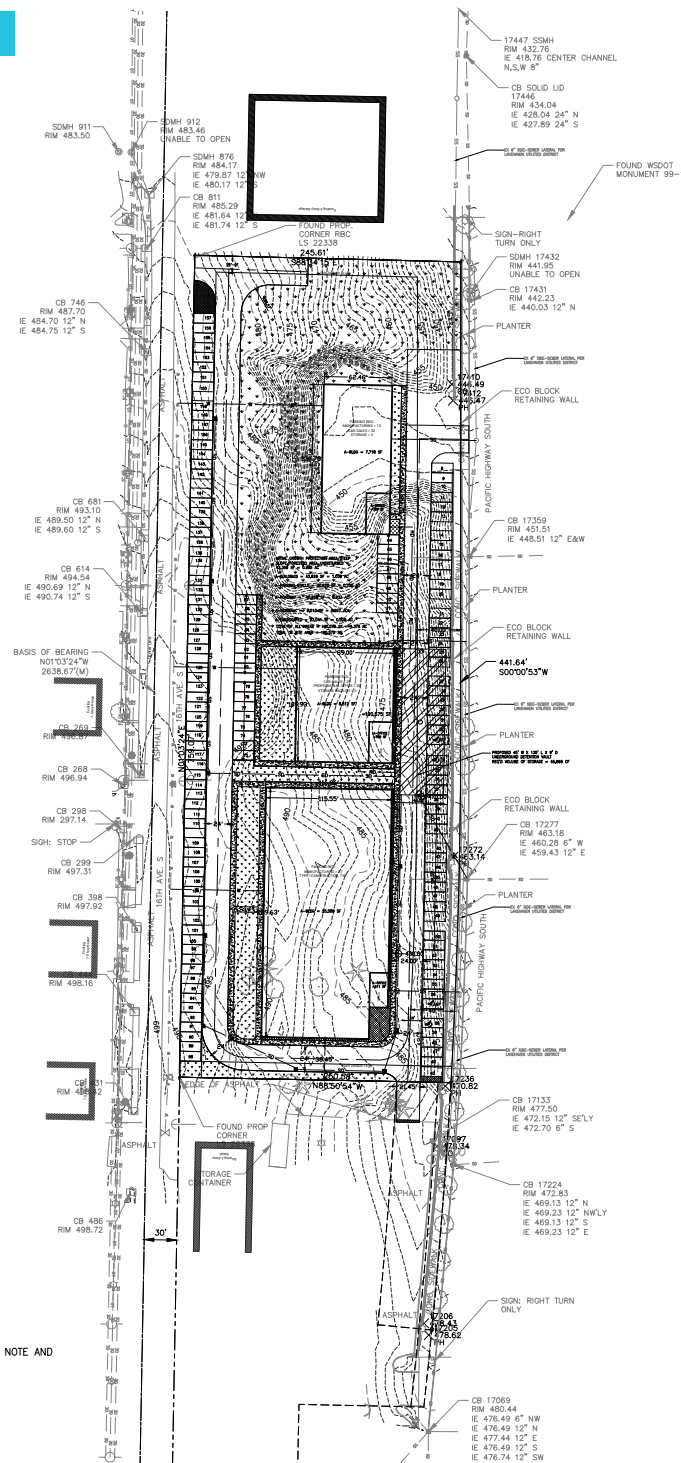
# 30200 PACIFIC HWY S

FEDERAL WAY, WA 98003



NEIL WALTER  
COMPANY

## Potential Dealership Site Plan



**BRUCE HEMMAT**  
206.787.1461  
bhemmat@neilwalter.com

**GRIFFIN DAY**  
206.787.1474  
gday@neilwalter.com

550 S Michigan St  
Seattle, WA 98108  
206.787.1800  
www.neilwalter.com

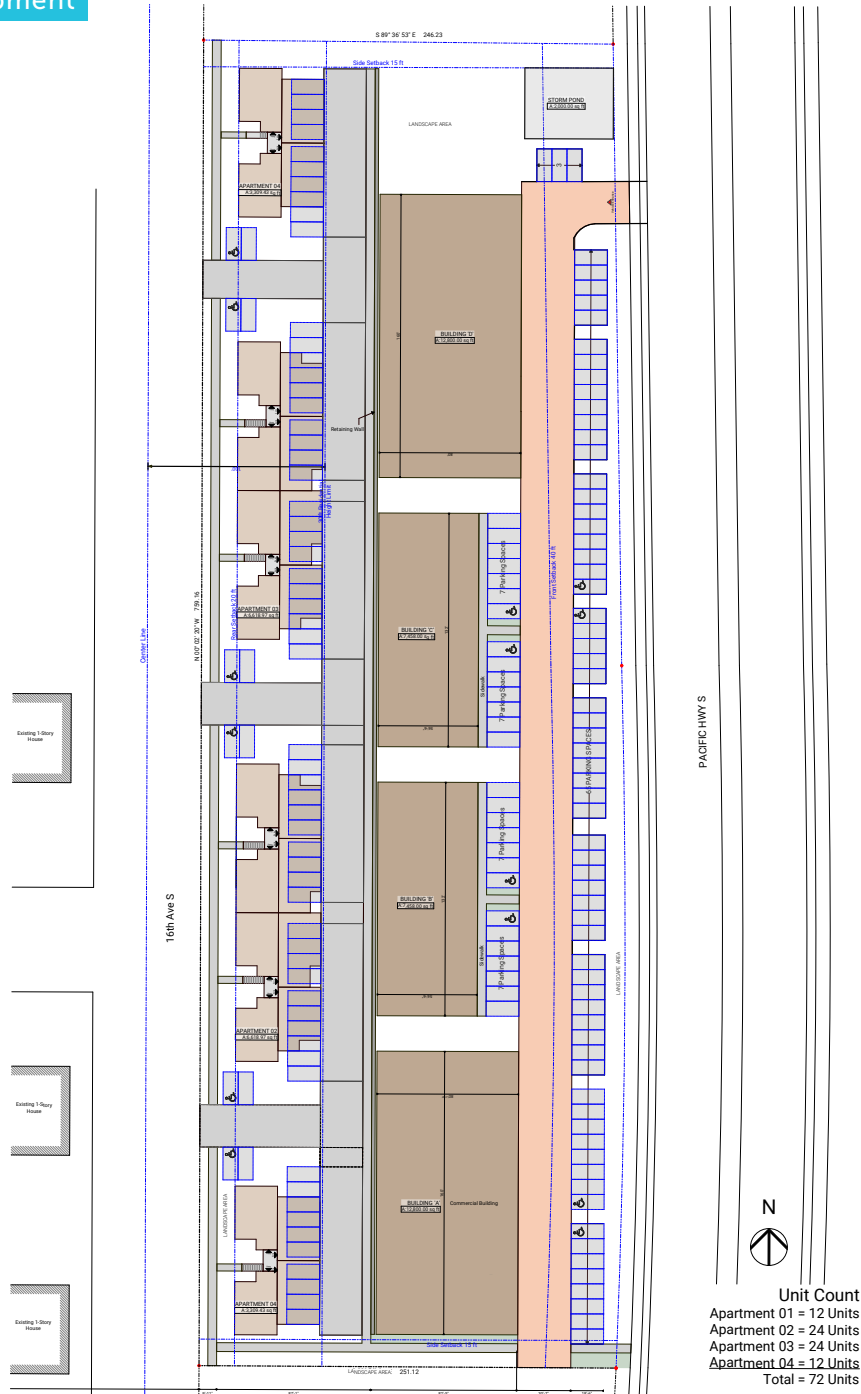
All information references in this document are approximate. The information contained herein is contained from sources deemed reliable. It is provided without representation, warranty, or guarantee, expressed or implied as to accuracy. Prospective buyer or tenant should conduct its own independent investigation relating to the property, government codes and regulations, allowed uses, and all other matters, regardless of whether they are referred to or contained in this document.

# 30200 PACIFIC HWY S

FEDERAL WAY, WA 98003



## Potential Development



**BRUCE HEMMAT**  
206.787.1461  
bhemmat@neilwalter.com

**GRIFFIN DAY**  
206.787.1474  
gday@neilwalter.com

550 S Michigan St  
Seattle, WA 98108  
206.787.1800  
www.neilwalter.com

All information references in this document are approximate. The information contained herein is contained from sources deemed reliable. It is provided without representation, warranty, or guarantee, expressed or implied as to accuracy. Prospective buyer or tenant should conduct its own independent investigation relating to the property, government codes and regulations, allowed uses, and all other matters, regardless of whether they are referred to or contained in this document.