

OFFICE SPACE  
AVAILABLE FOR SUBLEASE

10,500 SF

**1635** Tremont  
Street



1635 TREMONT STREET  
BOSTON, MA





## Building Overview

1635 TREMONT STREET OFFERS SPACE FOR SUBLEASE IN ONE OF BOSTON'S MOST STRATEGIC INSTITUTIONAL LOCATIONS. THE 10,500 SF OFFICE SUITE IS PLACED PROMINENTLY IN BRIGHAM CIRCLE, WITH DIRECT STREET FRONTAGE AND IMMEDIATE ACCESS TO BOSTON'S PREMIER MEDICAL AND ACADEMIC CORRIDOR.

Positioned at the intersection of Tremont Street and Huntington Avenue, the property provides unparalleled connectivity to major transportation routes and is surrounded by major institutions. Abundant retail and dining options are immediately accessible, with Stop & Shop, Walgreens, Citizen's, Dunkin', and a host of diverse restaurants just steps from the front doors. The facility benefits from exceptional public transportation access, with Brigham Circle Station less than a 1-minute walk away, and is within walking distance of the Longwood Medical Area and major hospitals, ensuring seamless connectivity to Boston's leading healthcare and research institutions.

This flexible office suite allows for a variety of configuration options within a completely renovated space. With four accessible storefront-style entryways facing the street, 1635 Tremont Street is designed to meet diverse operational needs and establish brand presence in Brigham Circle.

## Highlights



FLEXIBLE LEASE  
TERMS AVAILABLE



HIGH VISIBILITY  
LOCATION AT  
BRIGHAM CIRCLE



MULTIPLE OFFICE  
SUITES /  
CONFIGURATION  
OPTIONS



WALKING DISTANCE  
TO LONGWOOD  
MEDICAL AREA AND  
MAJOR HOSPITALS

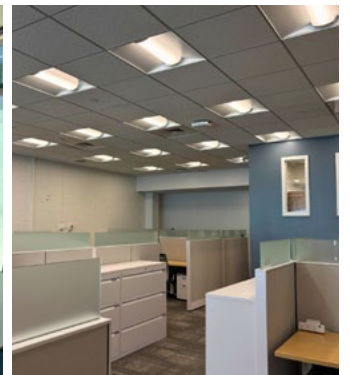


HIGH-DENSITY  
RESIDENTIAL &  
INSTITUTIONAL  
DEMAND

## AVAILABLE SPACE

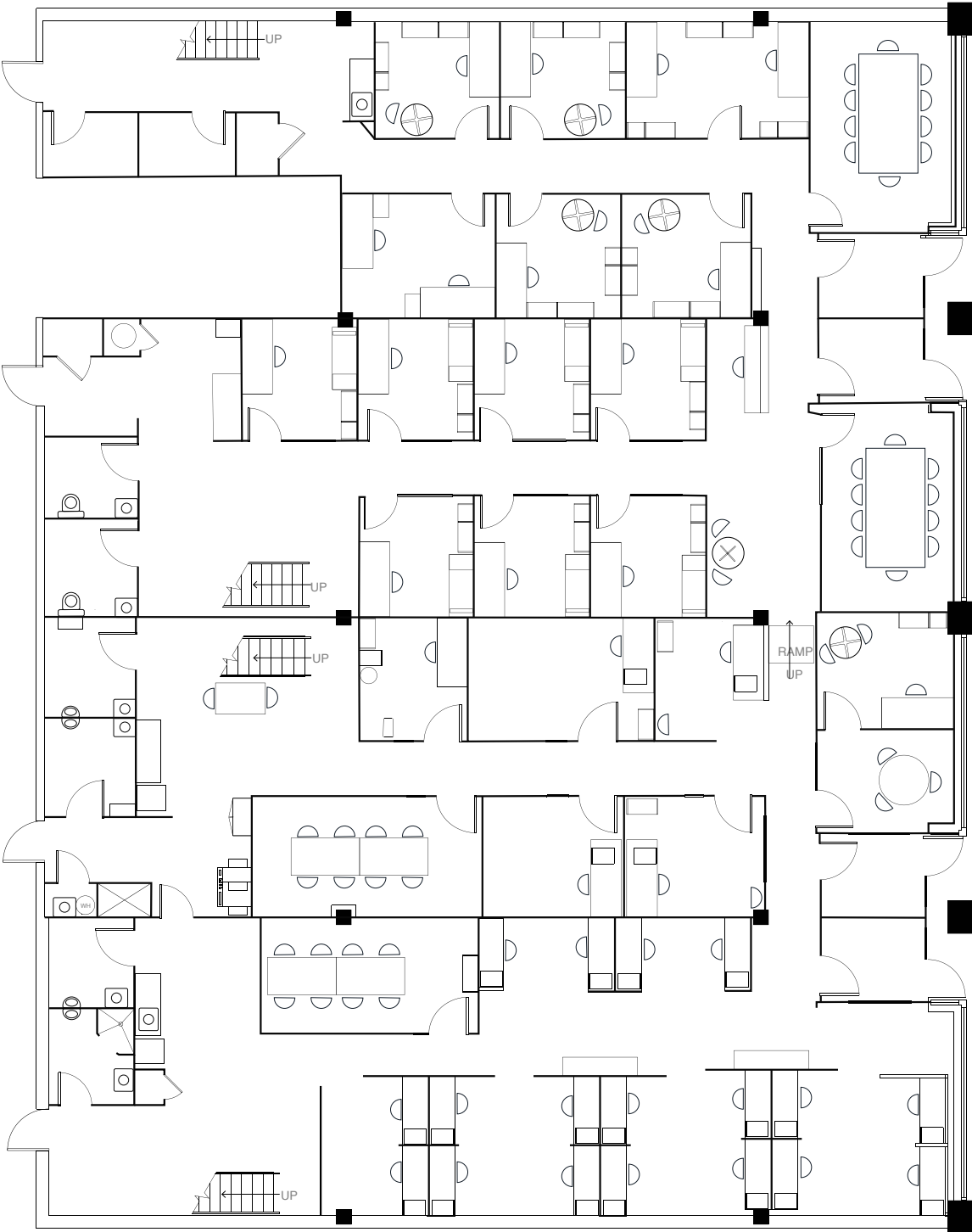
1st Floor

±10,500 SF



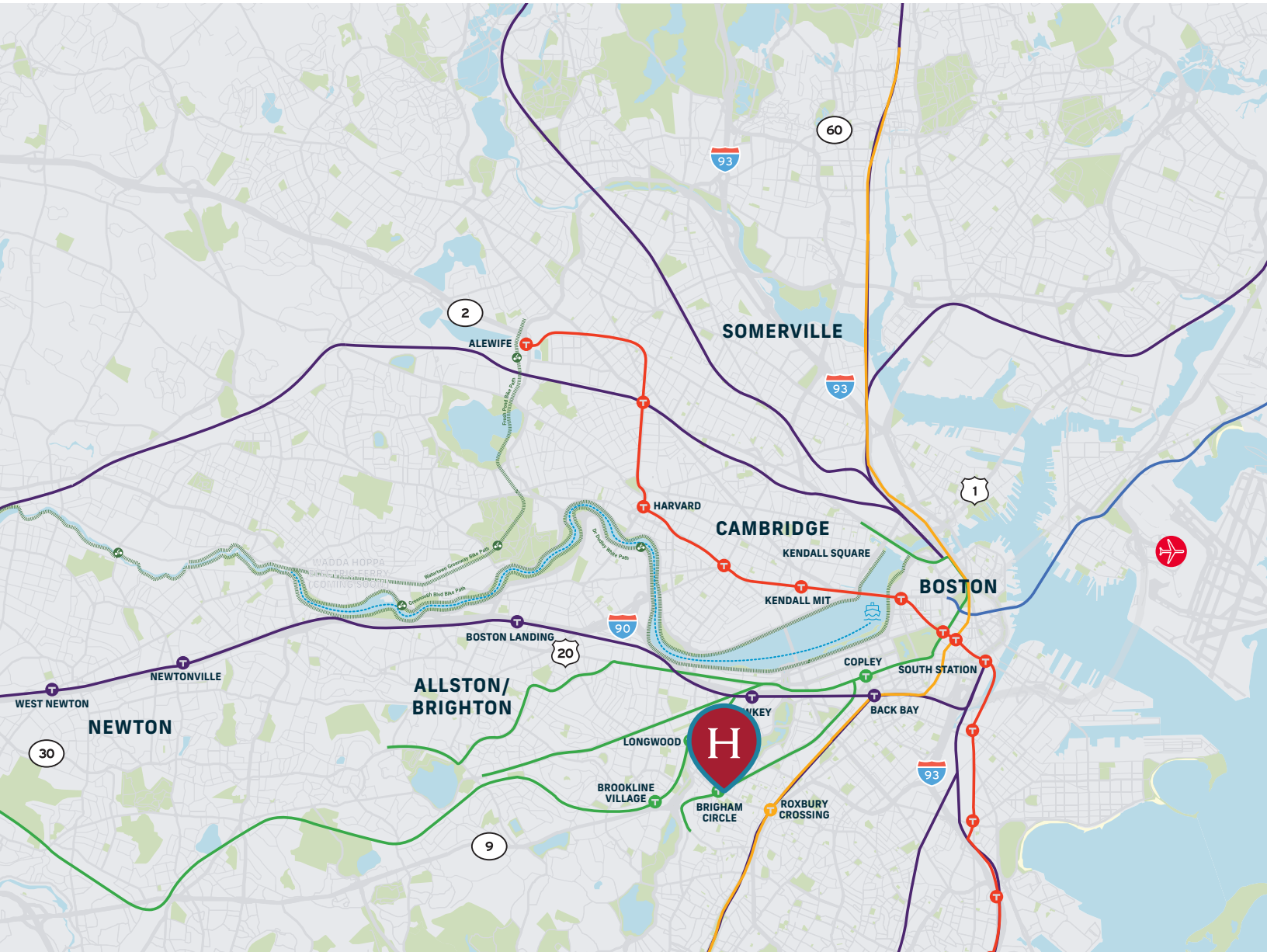
FIRST FLOOR  
±10,500 SF

1635 TREMONT STREET



Floor Plans

# Location Overview



## HRE BROKER CONTACT INFORMATION

Bob Richards  
bob.richards@jll.com  
617-943-3928

Jessica Sawyer  
jessica.sawyer@jll.com  
617-429-7016



## DISCLAIMER

Although information has been obtained from sources deemed reliable, JLL does not make any guarantees, warranties or representations, express or implied, as to the completeness or accuracy as to the information contained herein. Any projections, opinions, assumptions or estimates used are for example only. There may be differences between projected and actual results, and those differences may be material. JLL does not accept any liability for any loss or damage suffered by any party resulting from reliance on this information. If the recipient of this information has signed a confidentiality agreement with JLL regarding this matter, this information is subject to the terms of that agreement. ©2025 Jones Lang LaSalle Brokerage, Inc. All rights reserved.