



Industrial / Flex Space for Lease

10661 Nassau Street, Blaine, MN

AVAILABLE SPACE

- Built in 2003, Remodeled in 2020
- 2 Adjacent bays totaling 8,914 sf available individually or all together
 - Suite 500B – 4,214 total sf with 2,900sf lower-level office and 1,314 sf of 2nd floor, mezzanine boasting a kitchenette, restroom and office
 - Suite 500 A – 4,700 total sf, wide open space with 3 - 14' x 14' drive in doors, restrooms full HVAC.
- 3 - phase power
- Fire sprinkled, 16' clear height in warehouse
- Easy access to I-35W & Hwy 65 near Blaine's new sports / recreational complex and development
- Currently sports training facility, however, space can be converted to industrial or other



PROPERTY DETAILS

Lease Rate: \$7.52 / SF NNN
CAM / Tax \$4.21 / SF (2026)

FOR MORE INFORMATION, CONTACT

Marty Fisher / Mike Fisher

763-862-2005

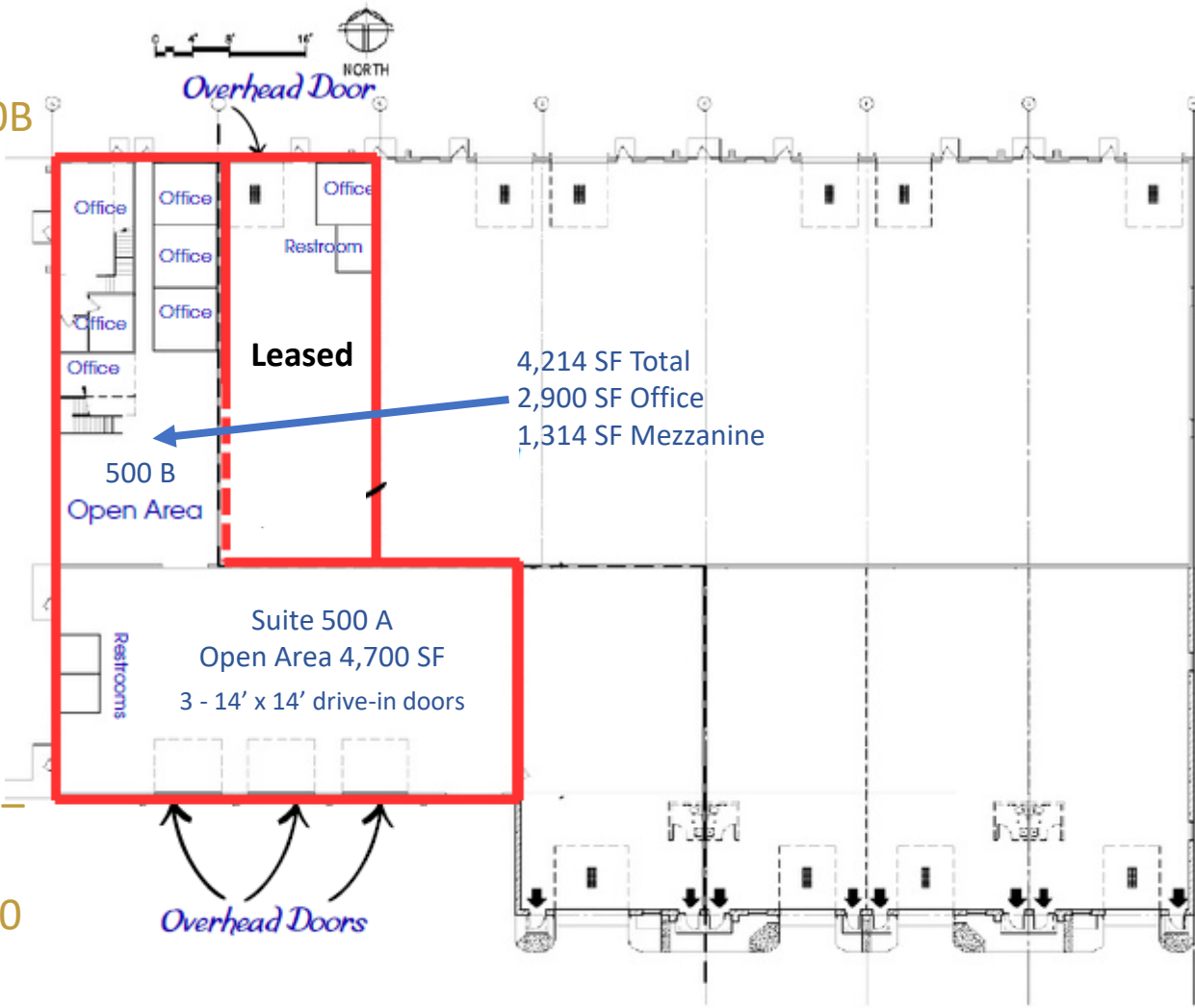
mfisher@premiercommercialproperties.com
mfisher@premiercommercialproperties.com



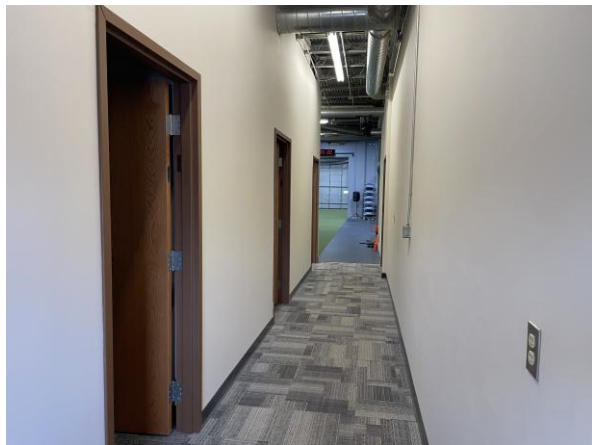
Suites 500A & 500B
both available;
can be demised

Suite 500B has
6 offices
including one
on the
mezzanine level
with kitchen.
Totals 4,214 sf

Suite 500 A has 3 –
14' x 14' drive-in
doors. Totals 4,700
SF



Suite 500 B (Lower-level office x 3)





PREMIER
COMMERCIAL
PROPERTIES

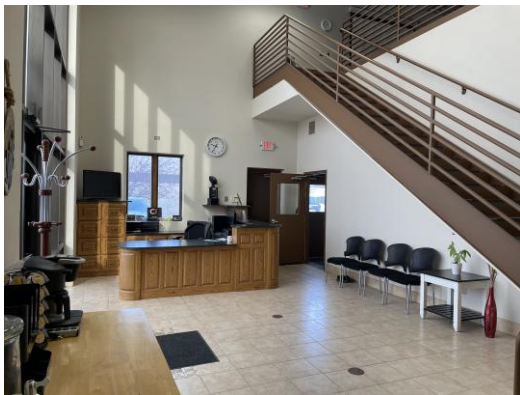
FOR LEASE

CONTACT: Marty Fisher

MOBILE: 612-708-2873

EMAIL: mfisher@premiercommercialproperties.com

Suite 500 B - Office



**Office and mezzanine area –
Mezzanine has kitchen & meeting area**





PREMIER
COMMERCIAL
PROPERTIES

FOR LEASE

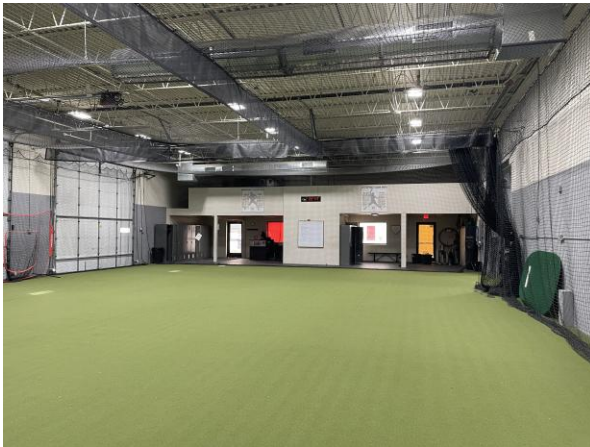
CONTACT: Marty Fisher

MOBILE: 612-708-2873

EMAIL: mfisher@premiercommercialproperties.com

Suite 500A

Warehouse area. Currently athletic training, wide open. 14' x 14' drive-in doors.





CONTACT: Marty Fisher

MOBILE: 612-708-2873

EMAIL: mfisher@premiercommercialproperties.com

