

FOR LEASE

5154 NORTH 90TH STREET, OMAHA, NE 68134

OFFICE | 720 SF | \$10.00 SF/YR (NNN)



**LEE &
ASSOCIATES**
COMMERCIAL REAL ESTATE SERVICES

PRESENTED BY:

Cori Adcock

402.871.4506

cadcock@lee-associates.com

Omaha: 12020 Shamrock Plaza, Suite 333 | Omaha, NE 68154 | 531.721.2888

Lincoln: 200 South 21st Street, Suite A113 | Lincoln, NE 68510 | 531.721.2888



FOR LEASE

5154 NORTH 90TH STREET, OMAHA, NE 68134

Office | 720 SF | \$10.00 SF/yr (NNN)



PROPERTY DESCRIPTION

Conveniently located off 90th & Fort, this property is ready for any office user looking for nicely finished space at affordable rates.

PROPERTY HIGHLIGHTS

- Nicely finished office space
- Ample on-site parking
- Landlord occupied property

LOCATION DESCRIPTION

Located on North 90th Street. Convenient to many services and amenities.

OFFERING SUMMARY

Lease Rate:	\$10.00 SF/yr (NNN)
NNN:	\$3.29 PSF
Available SF:	720 SF
Building Size:	4,800 SF

CONTACT

Cori Adcock

cadcock@lee-associates.com

C 402.871.4506

We obtained the information above from sources we believe to be reliable. However, we have not verified its accuracy and make no guarantee, warranty or representation about it. It is submitted subject to the possibility of errors, omissions, change of price, rental or other conditions, prior sale, lease or financing, or withdrawal without notice. We include projections, opinions, assumptions or estimates for example only, and they may not represent current or future performance of the property. You and your tax and legal advisors should conduct your own investigation of the property and transaction. Images are for illustrative purposes only and may include computer-generated renderings, virtual staging, or digital enhancements. Actual conditions, features, and finishes may vary and are subject to change without notice.

FOR LEASE

5154 NORTH 90TH STREET, OMAHA, NE 68134

Office | 720 SF | \$10.00 SF/yr (NNN)



AVAILABLE SPACES

SUITE	TENANT	SIZE (SF)	LEASE TYPE	LEASE RATE	DESCRIPTION
5154	Available	720 SF	NNN	\$10.00 SF/yr	Small office suite.

CONTACT

Cori Adcock

cadcock@lee-associates.com

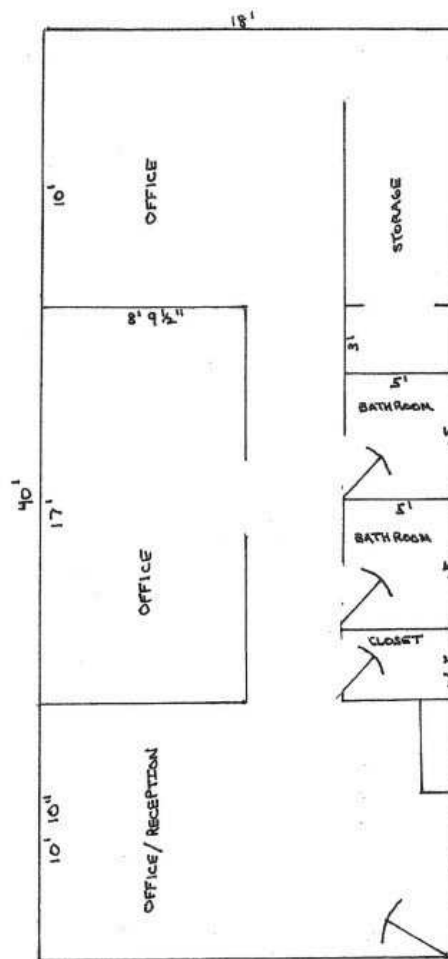
C 402.871.4506

We obtained the information above from sources we believe to be reliable. However, we have not verified its accuracy and make no guarantee, warranty or representation about it. It is submitted subject to the possibility of errors, omissions, change of price, rental or other conditions, prior sale, lease or financing, or withdrawal without notice. We include projections, opinions, assumptions or estimates for example only, and they may not represent current or future performance of the property. You and your tax and legal advisors should conduct your own investigation of the property and transaction. Images are for illustrative purposes only and may include computer-generated renderings, virtual staging, or digital enhancements. Actual conditions, features, and finishes may vary and are subject to change without notice.

FOR LEASE

5154 NORTH 90TH STREET, OMAHA, NE 68134

Office | 720 SF | \$10.00 SF/yr (NNN)



CONTACT

Cori Adcock

cadcock@lee-associates.com

C 402.871.4506

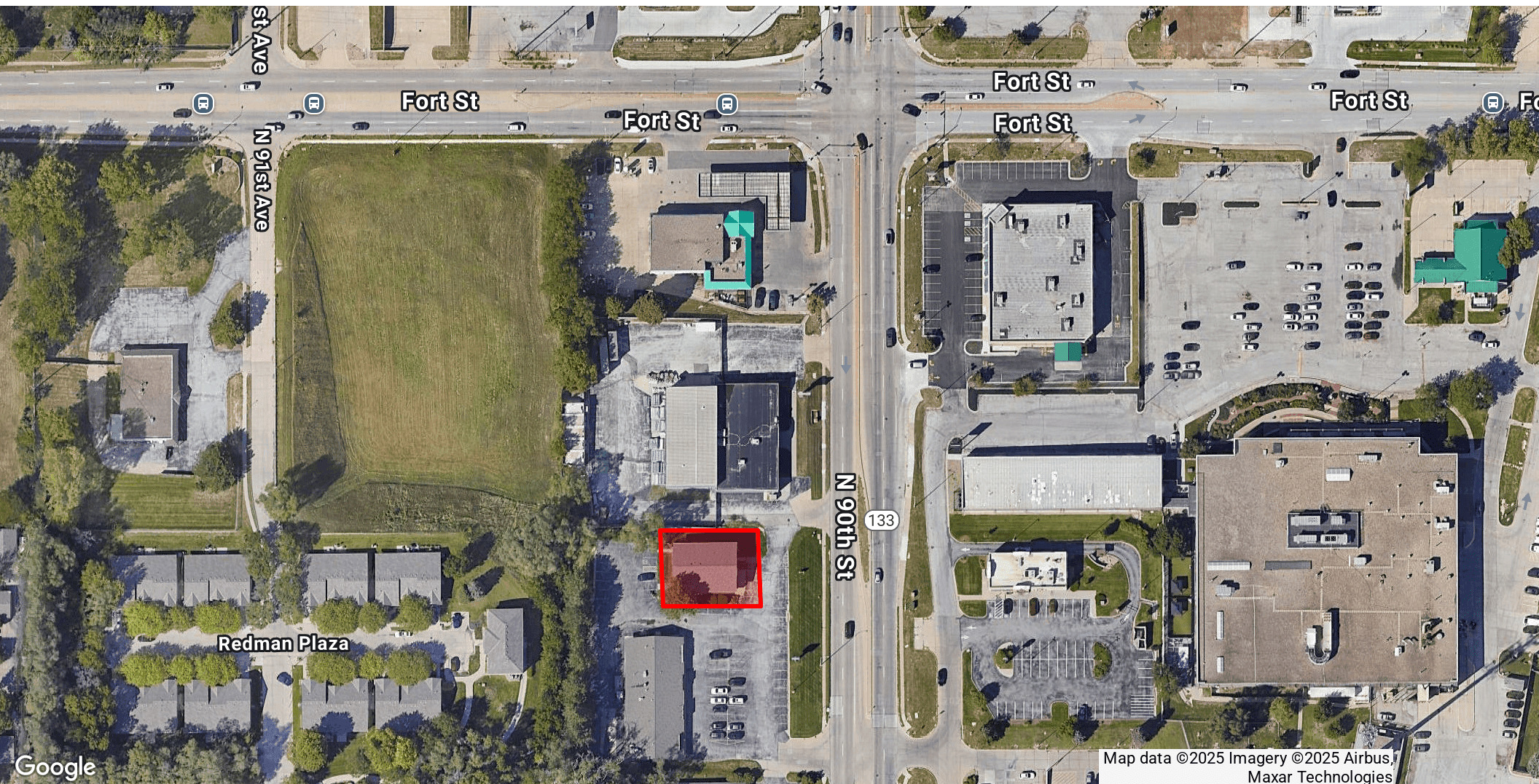
We obtained the information above from sources we believe to be reliable. However, we have not verified its accuracy and make no guarantee, warranty or representation about it. It is submitted subject to the possibility of errors, omissions, change of price, rental or other conditions, prior sale, lease or financing, or withdrawal without notice. We include projections, opinions, assumptions or estimates for example only, and they may not represent current or future performance of the property. You and your tax and legal advisors should conduct your own investigation of the property and transaction. Images are for illustrative purposes only and may include computer-generated renderings, virtual staging, or digital enhancements. Actual conditions, features, and finishes may vary and are subject to change without notice.

FOR LEASE

5154 NORTH 90TH STREET, OMAHA, NE 68134

Office | 720 SF | \$10.00 SF/yr (NNN)

LEE & ASSOCIATES
COMMERCIAL REAL ESTATE SERVICES



CONTACT

Cori Adcock

cadcock@lee-associates.com

C 402.871.4506

We obtained the information above from sources we believe to be reliable. However, we have not verified its accuracy and make no guarantee, warranty or representation about it. It is submitted subject to the possibility of errors, omissions, change of price, rental or other conditions, prior sale, lease or financing, or withdrawal without notice. We include projections, opinions, assumptions or estimates for example only, and they may not represent current or future performance of the property. You and your tax and legal advisors should conduct your own investigation of the property and transaction. Images are for illustrative purposes only and may include computer-generated renderings, virtual staging, or digital enhancements. Actual conditions, features, and finishes may vary and are subject to change without notice.

Omaha: 12020 Shamrock Plaza, Suite 333 | Omaha, NE 68154 | 531.721.2888

Lincoln: 200 South 21st Street, Suite A113 | Lincoln, NE 68510 | 531.721.2888

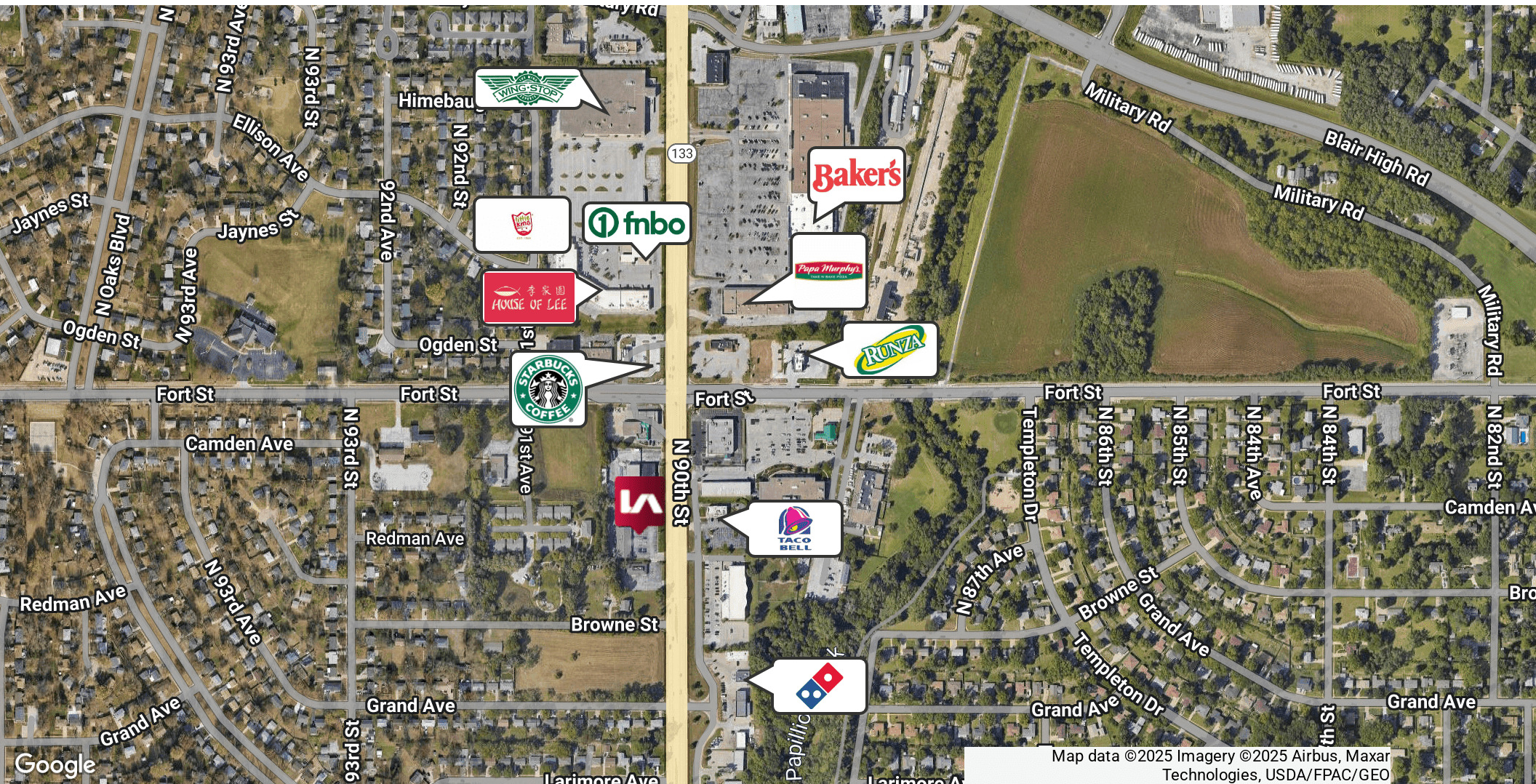


FOR LEASE

5154 NORTH 90TH STREET, OMAHA, NE 68134

Office | 720 SF | \$10.00 SF/yr (NNN)

LEE & ASSOCIATES
COMMERCIAL REAL ESTATE SERVICES



CONTACT

Cori Adcock

cadcock@lee-associates.com

C 402.871.4506

We obtained the information above from sources we believe to be reliable. However, we have not verified its accuracy and make no guarantee, warranty or representation about it. It is submitted subject to the possibility of errors, omissions, change of price, rental or other conditions, prior sale, lease or financing, or withdrawal without notice. We include projections, opinions, assumptions or estimates for example only, and they may not represent current or future performance of the property. You and your tax and legal advisors should conduct your own investigation of the property and transaction. Images are for illustrative purposes only and may include computer-generated renderings, virtual staging, or digital enhancements. Actual conditions, features, and finishes may vary and are subject to change without notice.

Omaha: 12020 Shamrock Plaza, Suite 333 | Omaha, NE 68154 | 531.721.2888

Lincoln: 200 South 21st Street, Suite A113 | Lincoln, NE 68510 | 531.721.2888



FOR LEASE

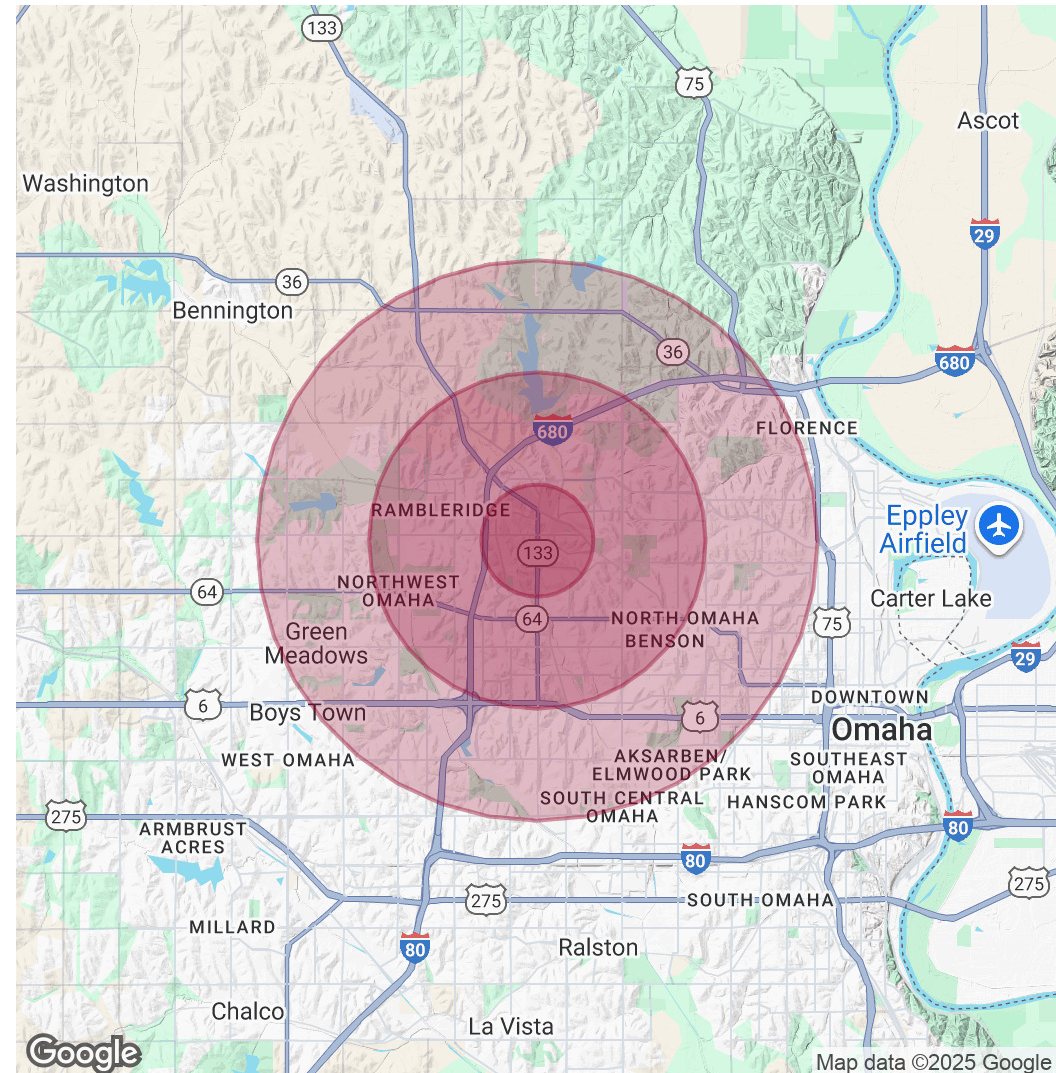
5154 NORTH 90TH STREET, OMAHA, NE 68134

Office | 720 SF | \$10.00 SF/yr (NNN)

POPULATION	1 MILE	3 MILES	5 MILES
Total Population	10,138	93,593	204,352
Average Age	39	38	38
Average Age (Male)	38	37	37
Average Age (Female)	40	39	40

HOUSEHOLDS & INCOME	1 MILE	3 MILES	5 MILES
Total Households	3,997	39,239	83,731
# of Persons per HH	2.5	2.4	2.4
Average HH Income	\$84,387	\$82,222	\$97,169
Average House Value	\$233,224	\$237,033	\$284,251

Demographics data derived from AlphaMap



CONTACT

Cori Adcock

cadcock@lee-associates.com

C 402.871.4506

We obtained the information above from sources we believe to be reliable. However, we have not verified its accuracy and make no guarantee, warranty or representation about it. It is submitted subject to the possibility of errors, omissions, change of price, rental or other conditions, prior sale, lease or financing, or withdrawal without notice. We include projections, opinions, assumptions or estimates for example only, and they may not represent current or future performance of the property. You and your tax and legal advisors should conduct your own investigation of the property and transaction. Images are for illustrative purposes only and may include computer-generated renderings, virtual staging, or digital enhancements. Actual conditions, features, and finishes may vary and are subject to change without notice.