

Pond Springs Rd Commercial

13240 Pond Springs Rd, Austin, TX 78729



Mark Pustka
McAllister & Associates
201 Barton Springs Rd, Austin, TX 78704
mark@matexas.com
(512) 472-2100



Pond Springs Rd Commercial

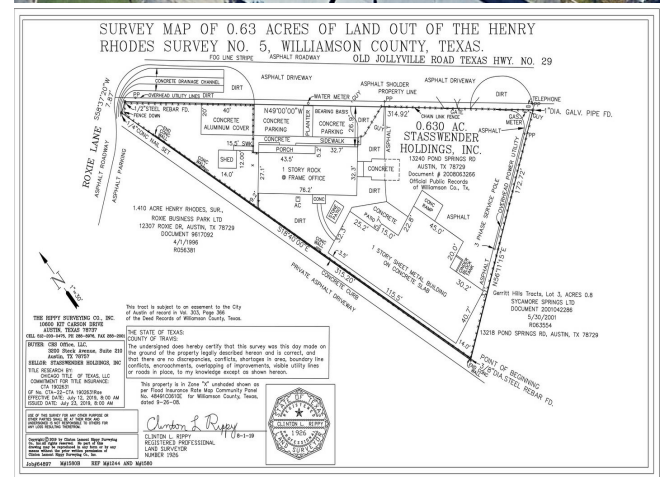
\$1,550,000

Recently updated and Repaired. Office Building exterior re-painted and extensive amount of Metal Warehouse building rusted metal removed and replaced.

In the Heart of the NW Austin Industrial/Warehouse corridor. This is a rare industrial space for this area. 480 PHS3 & 240 PHS3 POWER ON SITE. Excellent User Opportunity for Contractor, Subcontractor, Service Provider, Automotive, Building Trades, or any user needing yard, office, warehouse space etc. Great retail presence and easy access in or out. OR could be cash flowing Investment Property by finding a Tenant to occupy.

2,185...

- 2,185 SF Office / 5,395 SF Warehouse, Storage
- Convenient location for a User or Tenant in the NW Austin Area
- Rare availability for Office/Warehouse in the area
- Office / Warehouse / Lay Down Yard



Price:	\$1,550,000
Property Type:	Industrial
Property Subtype:	Warehouse
Building Class:	B
Sale Type:	Owner User
Lot Size:	0.63 AC
Gross Building Area:	7,898 SF
Rentable Building Area:	7,580 SF
No. Stories:	1
Year Built:	1984
Parking Ratio:	0.66/1,000 SF
Zoning Description:	HRR
APN / Parcel ID:	R056418



13240 Pond Springs Rd, Austin, TX 78729

Property Photos



Office View



Warehouse view

Property Photos



Laydown Yard in front Warehouse



Warehouse Interior

Property Photos

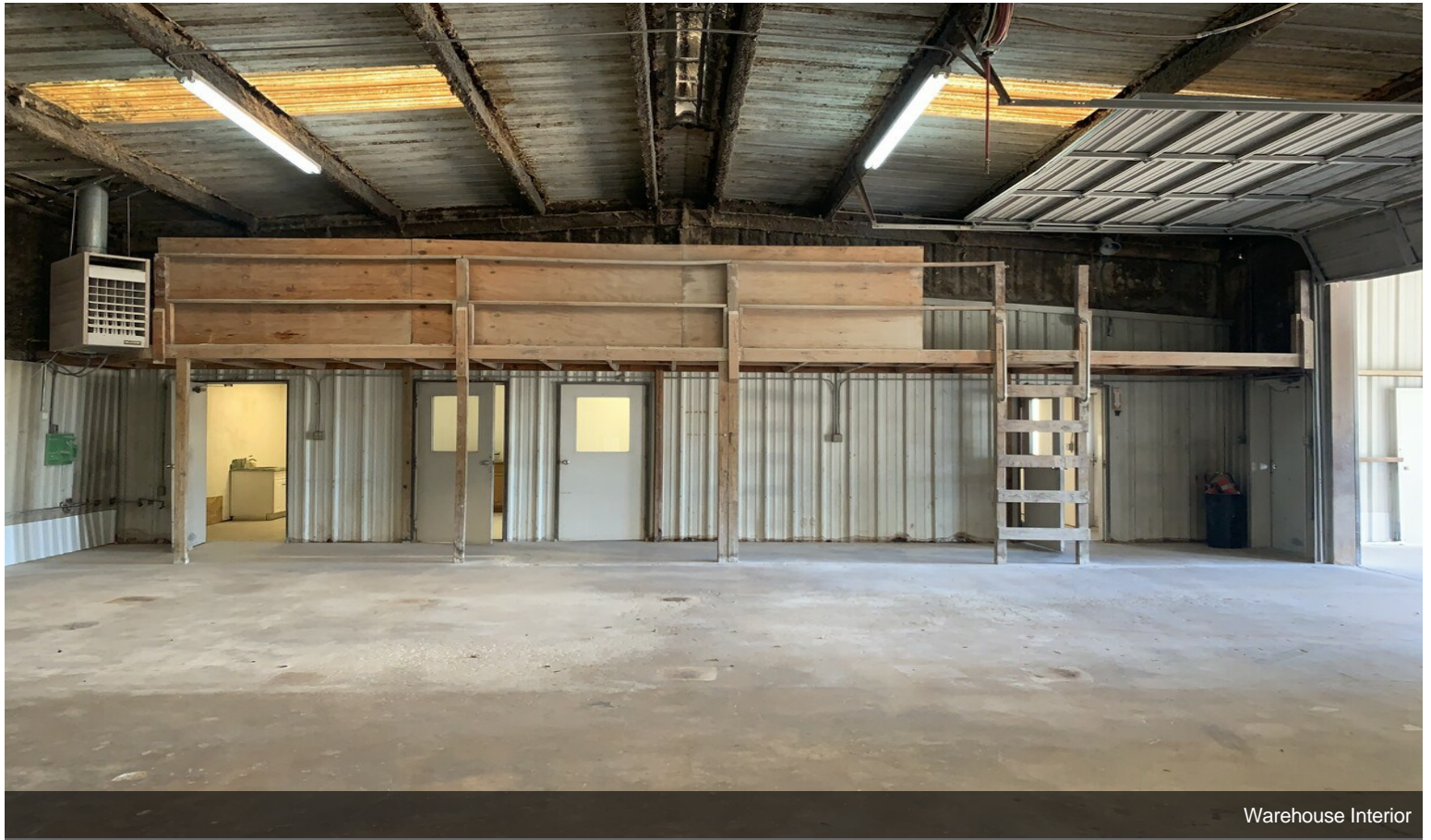


Warehouse Interior



Warehouse Ramp Entry

Property Photos



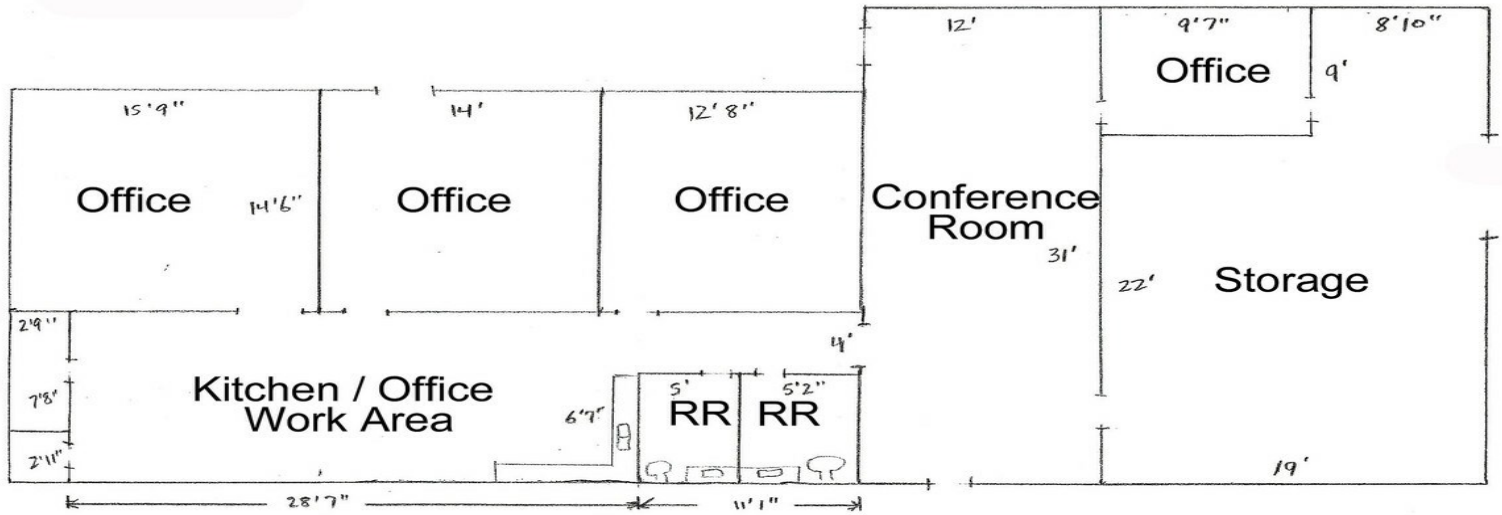
Warehouse Interior



Warehouse Exterior Rust Repair

Property Photos

13240 Pond Springs Rd Office Space



Office Layout



Office Interior

Property Photos



Office Interior



Restroom

Property Photos



Kitchen



Conference Rm

Property Photos



Office Storage



Carport

Property Photos



Storage Shed