

9849-9855 N. 19TH DRIVE

Phoenix, AZ 85021

OFFICE BUILDING FOR LEASE



PROPERTY DESCRIPTION

Multi-Tenant Industrial
Clear Height: $\pm 18'$
Built: 1985
 ± 120 -208V 3-Phase Power A-1 Zoning
 $\pm 10' \times 14'$ Grade Level Doors
Air Conditioned Office
Warehouse Evap Cooled

9855 N 19TH DRIVE - UNIT 1 - $\pm 1,354$ SF

Reception, One (1) Private Office (Upstairs), Bal Evap Warehouse and Grade Level Door



2150 East Highland Avenue, Suite 207, Phoenix, AZ 85016 // 602.955.3500 // cutlercommercial.com

ROD CROTTY

Associate Broker
602.386.1225 (D)
rcrotty@cutlercommercial.com

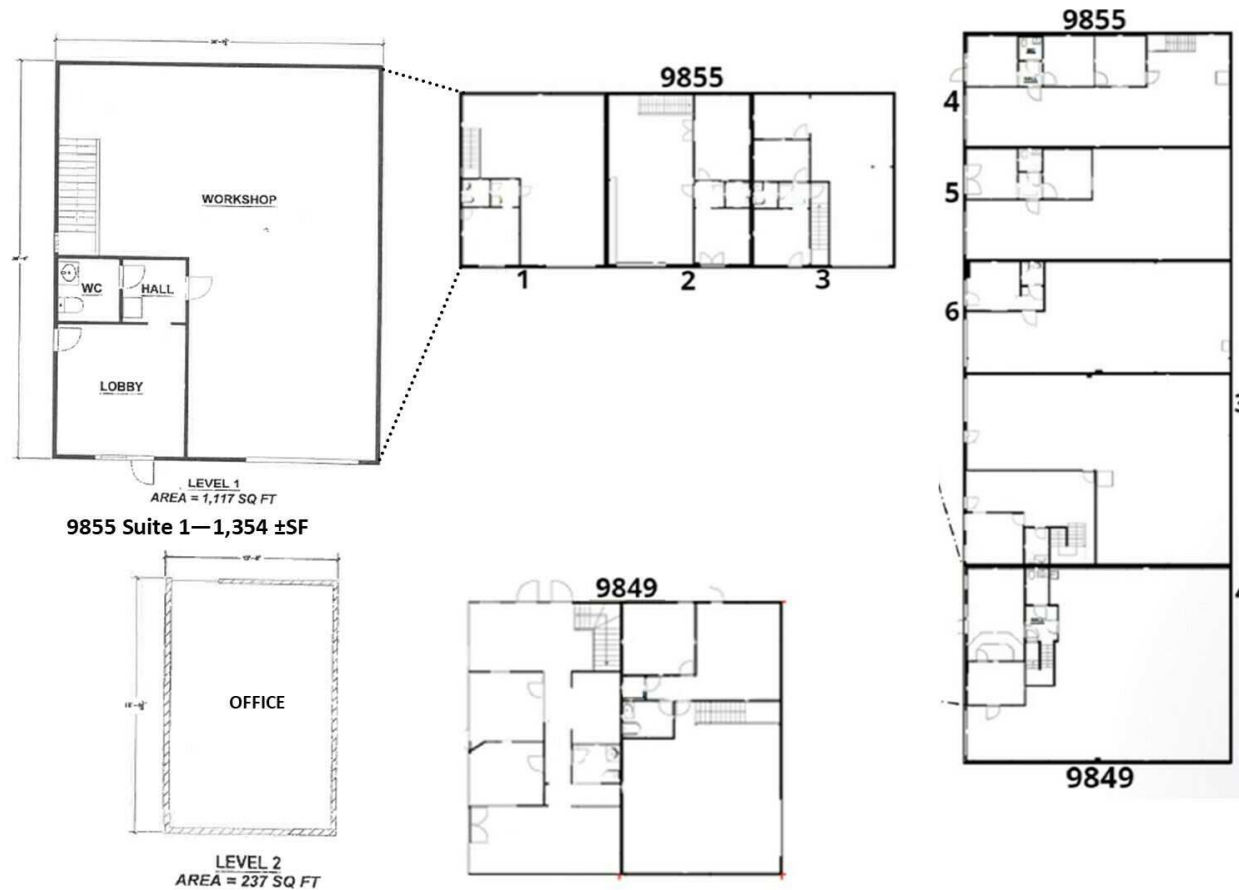


All information furnished is from sources deemed reliable. No representation is made as to the accuracy thereof and it is submitted subject to errors, omissions, changes, or withdrawal without notice and to any special listings conditions, including the rate and manner of payment of commissions for particular offerings imposed by principals or agreed to by the company, the terms of which are available to interested principals or brokers. All dimensions are approximate. Owner and/or Broker make no representations expressed or implied as to the accuracy of floor plan/site plan dimensions.

9849-9855 N. 19TH DRIVE

Phoenix, AZ 85021

OFFICE BUILDING FOR LEASE



2150 East Highland Avenue, Suite 207, Phoenix, AZ 85016 // 602.955.3500 // cutlercommercial.com

ROD CROTTY

Associate Broker
602.386.1225 (D)
rcrotty@cutlercommercial.com



All information furnished is from sources deemed reliable. No representation is made as to the accuracy thereof and it is submitted subject to errors, omissions, changes, or withdrawal without notice and to any special listings conditions, including the rate and manner of payment of commissions for particular offerings imposed by principals or agreed to by the company, the terms of which are available to interested principals or brokers. All dimensions are approximate. Owner and/or Broker make no representations expressed or implied as to the accuracy of floor plan/site plan dimensions.