

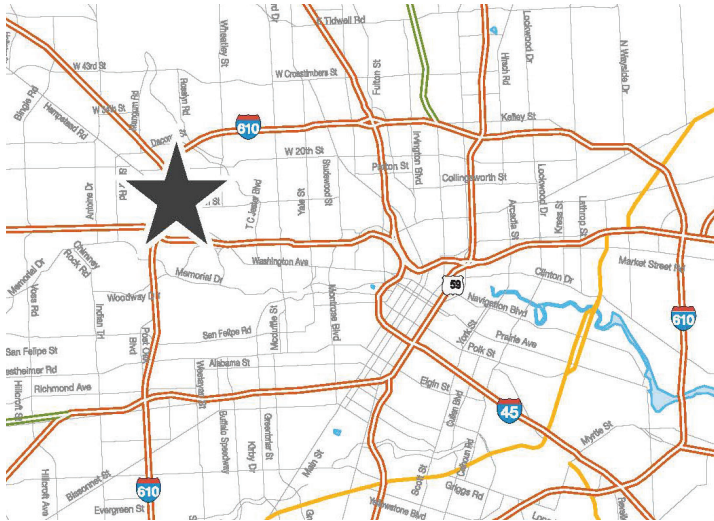
# FOR LEASE

**WYNNWOOD INDUSTRIAL PARK**  
7213 Wynnwood - Houston, TX 77008



# FOR LEASE

**WYNNWOOD INDUSTRIAL PARK**  
7213 Wynnwood - Houston, TX 77008



## Property Size:

- 38,107 SF
- 2,521 SF Office

## Property Features:

- End Cap Space
- Master Planned Business Park
- 5 Dock High Front Loading Doors
- 2 Ramp Loading Doors
- 20' Clear Height
- LED Lighting
- Security Lighting
- All Concrete Paving
- Space Made Ready

## Property Location:

- Easy Access to I-10, 610 Loop & 290
- Northwest Houston
- Inside Loop 610
- Right off Hempstead Hwy

*Leasing By:*



Ed Bane, SIOR  
Jon Michael  
(713) 589-3353

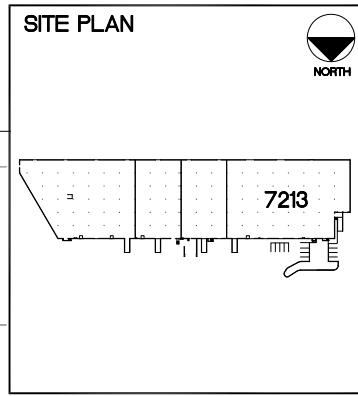
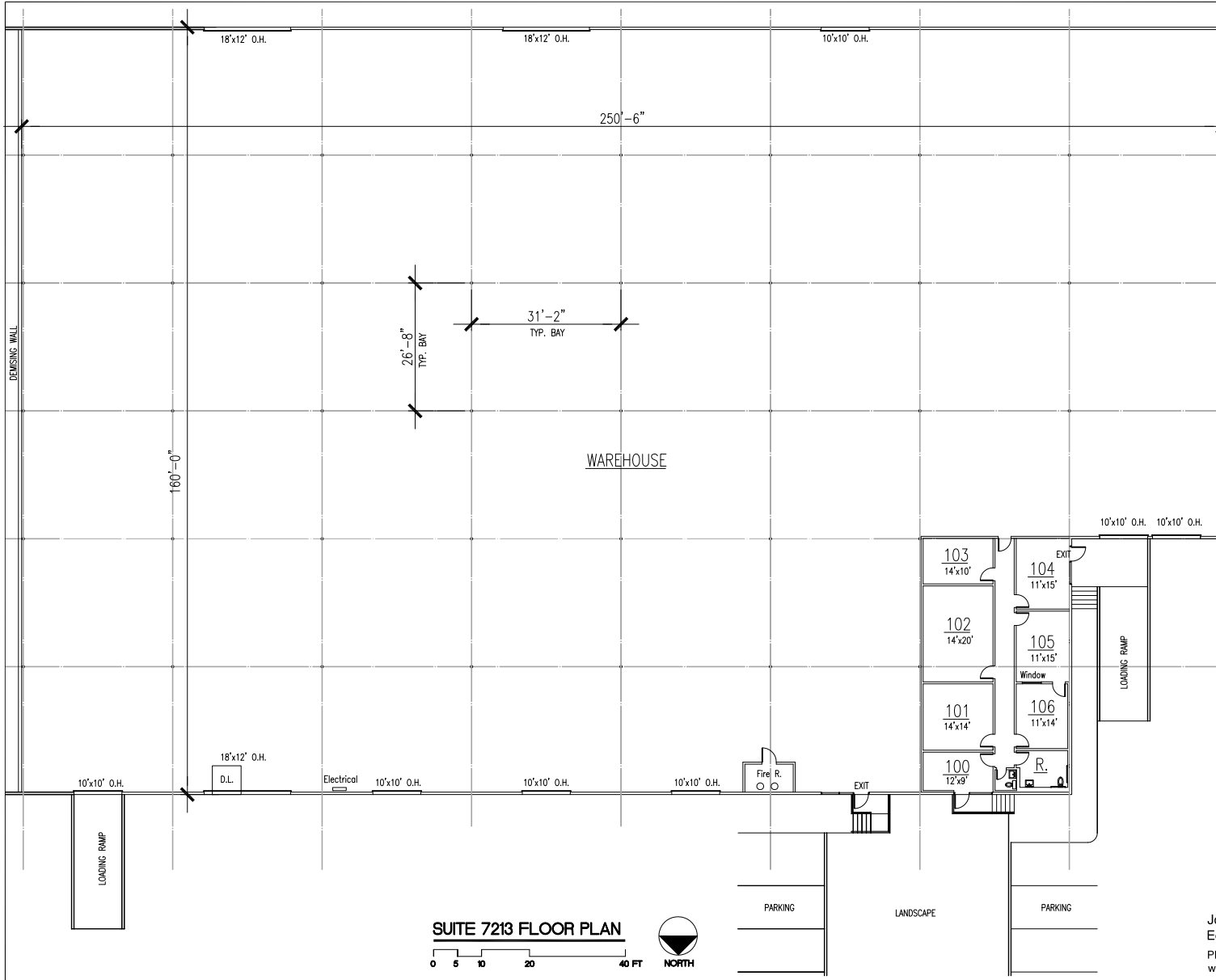
*Owned + Managed by:*



The information contained herein has been given to us by the owner of the property or other sources we deem reliable, we have no reason to doubt the accuracy, but we do not guarantee it. All information should be verified prior to lease.

# FOR LEASE

**WYNNWOOD INDUSTRIAL PARK**  
7213 Wynnwood - Houston, TX 77008



**WYNNWOOD BUSINESS PARK**  
7213 WYNNWOOD LANE  
HOUSTON, TEXAS 77008

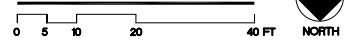
### BUILDING SUMMARY

OFFICE AREA : 1,690 SQ. FT. (4%)  
WAREHOUSE : 36,417 SQ. FT. (96%)  
TOTAL AREA: 38,107 SQ. FT.

### BUILDING FEATURES

- MASTER PLANNED BUSINESS PARK
- (5) DOCK HIGH FRONT LOADING DOORS
- (2) LOADING RAMPS WITH O.H. DOORS
- FULLY SPRINKLED
- 20' CLEAR HEIGHT
- EASY ACCESS I-10, 610 LOOP and FREEWAY 290
- SECURITY LIGHTING
- ALL CONCRETE PAVING
- LED LIGHTING
- END CAP SPACE
- SPACE MADE READY
- 200' SHARED TRUCK COURT

**SUITE 7213 FLOOR PLAN**



Jon L. Michael  
Edward Bane  
Phone: 713-589-3353  
www.bridgecommercialre.com

6750 West Loop South,  
Suite 330  
Bellaire, Texas 77401

© YONG ARCHITECTS, INC. 04-9-2008

The information contained herein has been given to us by the owner of the property or other sources we deem reliable, we have no reason to doubt the accuracy, but we do not guarantee it. All information should be verified prior to lease.