

4000 Noakes Street

COMMERCE, CA 90023

±113,347 sq. ft.
AVAILABLE

7 total
DOCK DOORS

±44,399 SF sq. ft.
REFRIGERATED PRODUCTION

30'
CLEAR HEIGHT

±23,918 sq. ft.
FREEZER

±23,842 sq. ft.
OFFICE

Features

±113,347 sq. ft. cold storage -
food production plant with
±44,399 sq. ft. refrigerated
production and ±23,918 sq. ft.
freezer with refrigerated dock

Formerly USDA & safe quality
food - level 3 conforming

Separate fenced & secured
loading & parking areas

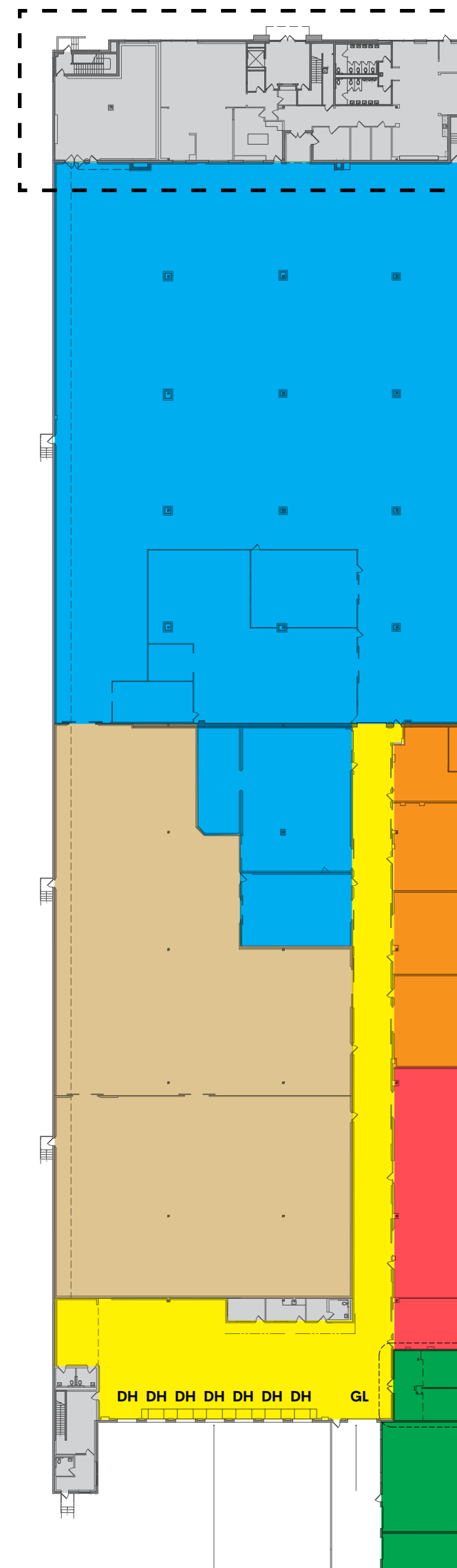
Direct access to:
Interstates 5 & 10
60, 101, 710 Freeways



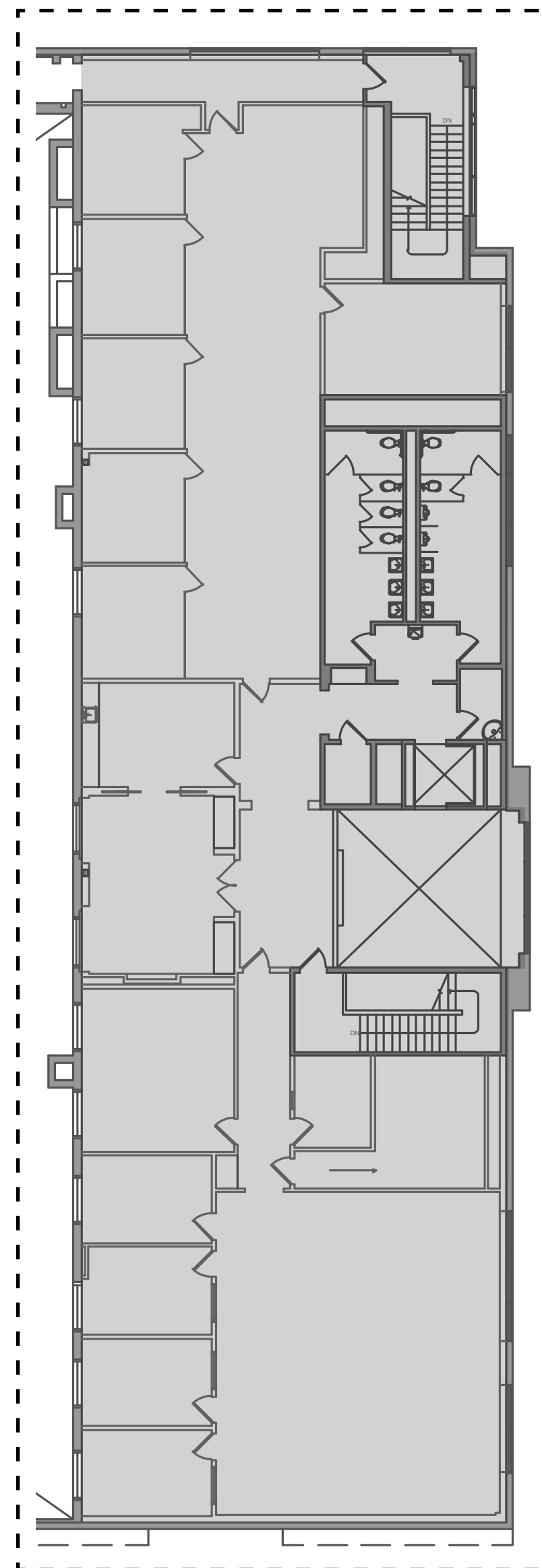
Building Specifications

Building Size	±113,347 sq. ft.
Available	±113,347 sq. ft.
Office Space	±23,842 sq. ft.
Clear Height	30'
Dock Doors	7 doors
Grade Level Doors	1 door via ramp
Yard	Fenced & secured with guard shack
Automobile Parking	±129 spaces
Sprinklers	.30 / 2000
Power	±6,400 amps
Refrigeration	Ammonia
Utilities	Three stage wastewater clarifier
	Floor drains
Construction	2007 concrete tilt-up (renovated 2023)
Floor	10" concrete

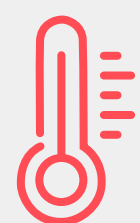
- Refrigerated Production (28° to 38°)
- Freezer (-10° to 28°)
- Refrigerated Storage (28° to 38°)
- Refrigerated Storage Capable - Currently Dry Storage (28° to 38°)
- Refrigerated Dock (45° to 55°)
- Office/Welfare
- Mechanical / Utility Support



Ground Floor



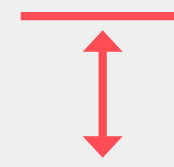
Mezzanine



±44,399 SF
Refrigerated Production Area



±23,918 SF
Freezer Area



30'
Clear Height



±6,400
Amps

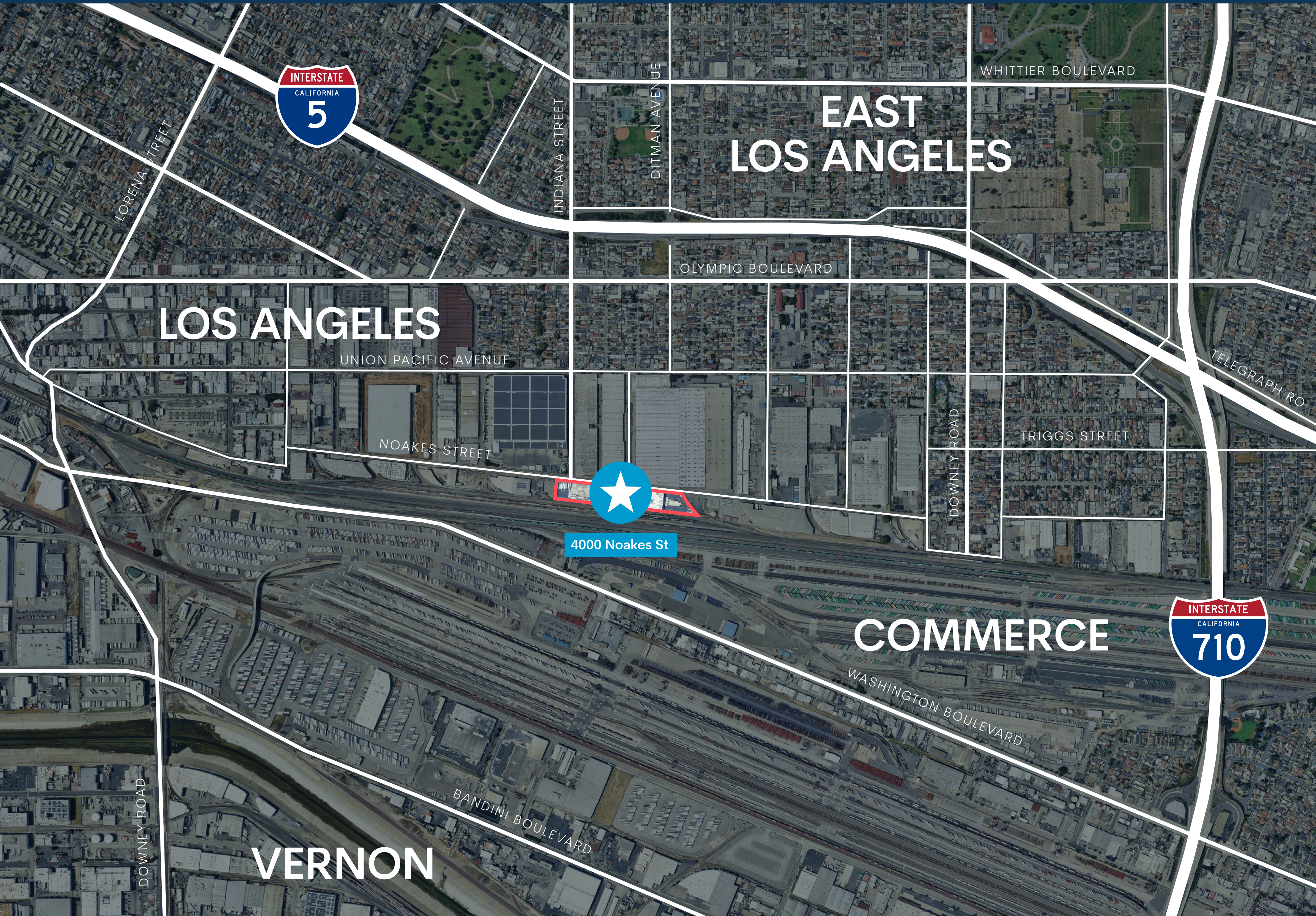
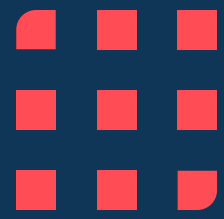


7
Dock Doors



±129
Automobile Parking





EAST LOS ANGELES

LOS ANGELES

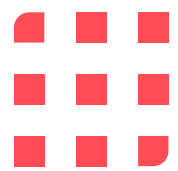


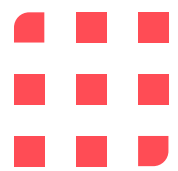
4000 Noakes St



COMMERCE

VERNON





4000 Noakes Street

COMMERCE, CA 90023



Leasing Contacts

Jeff Sanita

310-491-2003

jeff.sanita@nmrk.com

CA RE Lic. #01242202

John McMillan

310-491-2048

john.mcmillan@nmrk.com

CA RE Lic. #01103292

Corporate License #01355491

The distributor of this communication is performing acts for which a real estate license is required. The information contained herein has been obtained from sources deemed reliable but has not been verified and no guarantee, warranty or representation, either express or implied, is made with respect to such information. Terms of sale or lease and availability are subject to change or withdrawal without notice.

NEWMARK

Andrew Conroy

310-491-2085

andrew.conroy@nmrk.com

CA RE Lic. #02143325

Scott Delphey

Food Properties Group

626-590-0490

scott.delphey@foodpropertiesgroup.com

CA RE Lic. #01488628



Brookfield Properties

Joonas Partanen

310-765-3232

joonas.partanen@brookfieldproperties.com

brookfieldproperties.com/logistics

