

# WARLAND

CYPRESS BUSINESS CENTER

**6261 KATELLA AVE  
SUITE 175**  
CYPRESS, CALIFORNIA



[www.warlandcypress.com](http://www.warlandcypress.com)

**FOR LEASE :: ±3,022 SF**  
FIRST FLOOR OFFICE SPACE

#### FEATURES:

- High Image 2-Story Building
- ±520' of Katella Avenue Frontage
- Flexible Perimeter Office with Open Bay
- Improvements to Suit
- 4.0:1,000 Parking
- Part of a Larger ±74,000 SF Building
- See Reverse for Floor Plan
- Call to show

#### AMENITIES:

- 200-Acre Planned Development
- People-Oriented Environment
- Long-term Ownership with Commitment to Building Quality
- Outstanding Labor Supply
- Expansion Flexibility
- Minutes to San Diego (405), Garden Grove (22) and San Gabriel (605) Freeways



**Laird Perkins**

Lic. 00966207

T +1 310 363 4920

[laird.perkins@cbre.com](mailto:laird.perkins@cbre.com)

**Brian DeRevere**

Lic. 00885755

T +1 714 371 9224

[brian.derevere@cbre.com](mailto:brian.derevere@cbre.com)

**CBRE**

Broker Lic. 00409987  
1100 W. Town & Country Rd. Suite 1200  
Orange, CA 92868

© 2022 CBRE, Inc. This information has been obtained from sources believed reliable. We have not verified it and make no guarantee, warranty or representation about it. Any projections, opinions, assumptions or estimates used are for example only and do not represent the current or future performance of the property. You and your advisors should conduct a careful, independent investigation of the property to determine to your satisfaction the suitability of the property for your needs. N:\TEAM-REVERE\MARKETING-INDESIGN\WARLANDCYPRESSBUSINESSCENTER\6261 KATELLA AVE \SUITE 175-3,022SF\6261 KATELLA AVE \_ SUITE 175 \_ V02AK.INDD

# 6261 KATELLA AVENUE, SUITE 175

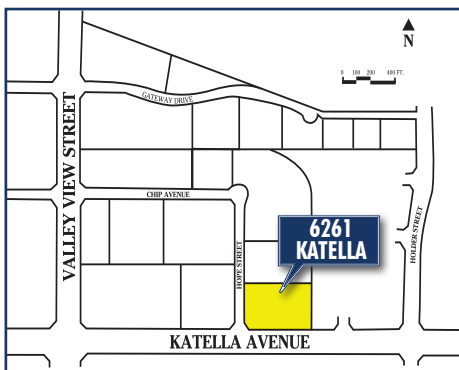
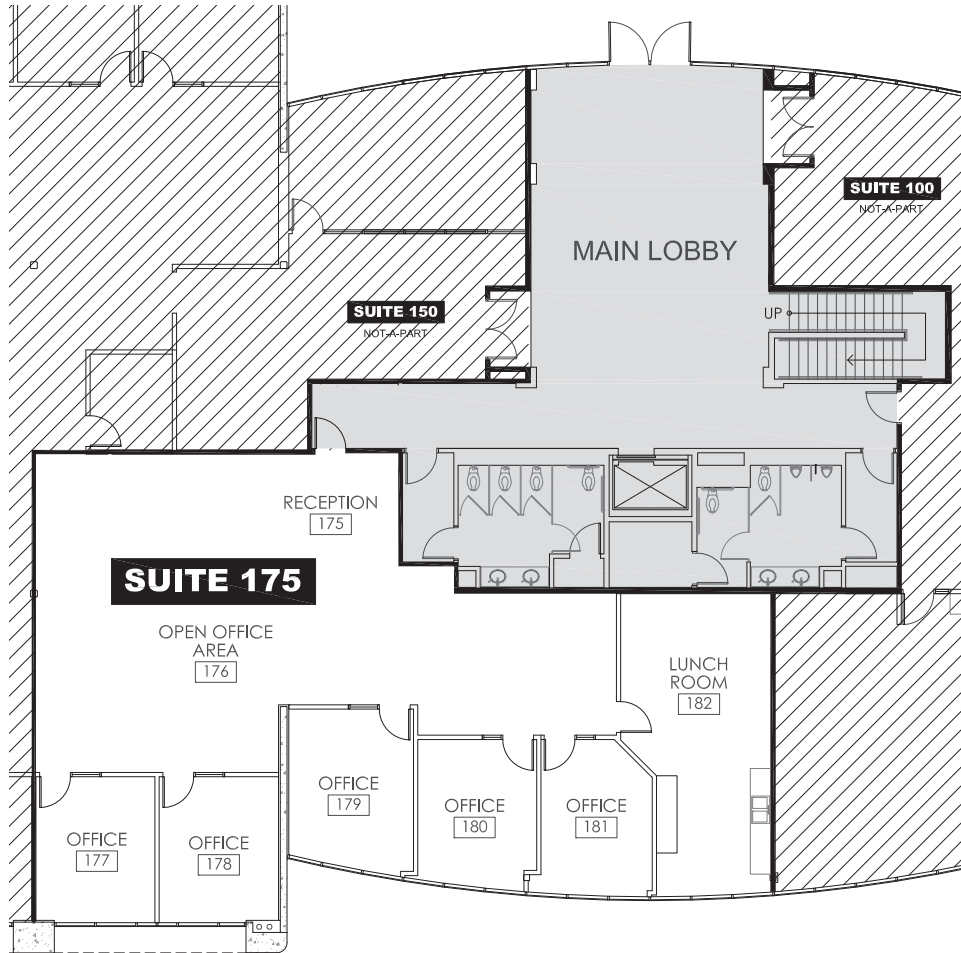
CYPRESS, CALIFORNIA

FOR LEASE :: ±3,022 SF

[www.warlandcypress.com](http://www.warlandcypress.com)

**WARLAND**  
CYPRESS BUSINESS CENTER

## FLOOR PLAN



## CORPORATE NEIGHBORS:

Rolls Royce  
Charter Communications  
DRS Technologies  
Johnson Controls  
Mitsubishi Electric

Mitsubishi Motors  
Evergreen Shipping  
Shaw Carpet  
United Health  
Siemens

### Laird Perkins

Lic. 00966207

T +1 310 363 4920

[laird.perkins@cbre.com](mailto:laird.perkins@cbre.com)

### Brian DeRevere

Lic. 00885755

T +1 714 371 9224

[brian.derevere@cbre.com](mailto:brian.derevere@cbre.com)

# CBRE

Broker Lic. 00409987  
1100 W. Town & Country Rd. Suite 1200  
Orange, CA 92868