

1ST FLOOR PLAN

WALL LEGEND:

- INDICATES FULL HEIGHT WALL. NO GYPSUM BOARD ABOVE CEILING AT 8M. CONDITION REF DETAIL 5/A6.5
- INDICATES 6" ABOVE CEILING.
- 3 5/8" METAL STUDS AT 16" O.C. WITH 3 1/2" BATT (R-13) INSULATION AND 5/8" GYPSUM BOARD ON BOTH SIDES UNLESS OTHERWISE NOTED
- 6" METAL STUDS AT 16" O.C. WITH 6" BATT (R-19) INSULATION AND 5/8" GYPSUM BOARD ON BOTH SIDES UNLESS OTHERWISE NOTED
- 8" METAL STUDS AT 16" O.C. AND MOISTURE RESISTANT GYPSUM BOARD REQUIRED FOR RETURN AIR SHAFTS TO UNDERSIDE OF ROOF DECK WITH DEEP LEG SLIP TRACK
- NEW CMU WALL
- CONCRETE TILT WALL
- COOLER / FREEZER WALL

- F.D.1
- F.D.2
- P.B.
- F.D.C.
- D.B.
- H.B.1
- H.B.2
- M.S.G.
- K.B.
- F.E.
- FLOOR SINK TWO PIECE HALF GRATE. VERIFY AND COORDINATE LOCATIONS WITH REFRIGERATION AND PLUMBING DRAWINGS.
- FLOOR DRAIN 6" (PREP AREA).
- FLOOR DRAIN 12" (PREP AREA).
- ACCESSIBLE DRINKING FOUNTAIN.
- PIPE BOLLARD, PAINT SAFETY YELLOW. SEE DETAIL 14/A6.0
- WATER HEATER. SEE DETAIL 24/A6.0
- ROOF LADDER. SEE DETAIL 34/A6.4
- SHIPS LADDER. SEE DETAIL 44/A6.4
- STORAGE RACK (MOP SINK)
- FIRE DEPARTMENT CONNECTION
- MUSHROOM BOTTOM DOOR BELL AT 5'-0" ABOVE EXTERIOR GRADE / LANDING. PAINT TO MATCH ADJACENT FINISHES - DOOR BELL ON ALUMINUM FRAMING AT 8M.
- RECESSED HOSE BIB WITH COVER.
- SURFACE MOUNTED HOSE BIB.
- PRODUCE CASE MISTING SYSTEM CONTROLLER LOCATE ON TOP OF REFRIGERATION CASE UNDER AINING.
- REVERSE OSMOSIS SYSTEM. COORDINATE LOCATION WITH REFRIGERATION, PLUMBING, ELECTRICAL AND FUTURE PLAN.
- KNOX BOX. LOCATE PER LOCAL FIRE DEPARTMENT REQUIREMENTS. GENERAL CONTRACTOR TO VERIFY INSTALLATION PRIOR TO BID.
- FIRE EXTINGUISHER. FINAL LOCATION TO BE COORDINATED WITH LOCAL FIRE AUTHORITY. PROVIDE 5 LB. K SERIES FIRE EXTINGUISHER NEAR DELI PREP EXHAUST HOOD. PROVIDE 10 LB. ABC SERIES EXTINGUISHERS TYPICAL THROUGHOUT.

FLOOR PLAN WALL LEGEND:

- GREASE INTERCEPTOR. SEE PLUMBING DRAWINGS. COORDINATE SEWER LINES WITH EXISTING FOOTINGS.
- BALER
- SELF CONTAINED TRASH COMPACTOR. MAXIMUM SLOPE OF CONCRETE COMPACTOR PAD IS .01%.
- HYDRAULIC CONTROLS FOR COMPACTOR
- SERVICE ENTRY SECTION (SEE.)
- TRANSFORMER
- FIRE SPRINKLER RISER
- GAS METER
- 3-COMPARTMENT SINK (LARGE) MEAT AND DELI PREP.
- 3-COMPARTMENT SINK (MEDIUM) PRODUCE PREP.
- 2-COMPARTMENT SINK PRODUCE SOAK AND RINSE.
- 1-COMPARTMENT PREP SINK WITH DRAIN BOARD.
- BREAK ROOM SINK
- JANITORS SINK WITH 8'-0" HIGH FRP EACH WALL.
- HAND SINK WITH SPLASH GUARD.
- TRENCH DRAIN. TO BE LOCATED 14" FROM FACE OF WALL PANEL AND EXTEND 6" BEYOND DOOR JAMB.
- FLOOR SINK FULL GRATE. VERIFY AND COORDINATE LOCATIONS WITH REFRIGERATION AND PLUMBING DRAWINGS.

GENERAL NOTES:

- DIMENSIONS ARE TO FACE OF MASONRY AND STUDS, AND CENTERLINE OF COLLING UNLESS OTHERWISE INDICATED.
- GENERAL CONTRACTOR SHALL VERIFY GOVERNMENTAL REQUIREMENTS PRIOR TO BID AND INCLUDE IN BID ALL COSTS ASSOCIATED WITH FIRE ALARM SYSTEM INCLUDING AUDIOVISUAL DEVICES AND PULL STATIONS WHERE REQUIRED.
- ASSUMED PLAN FINISH FLOOR ELEVATION = 1000.0'.
- UNLESS NOTED OTHERWISE, PARTITION WALLS SHALL BE CONSTRUCTED OF 5/8" GYPSUM BOARD, BOTH SIDES TO 6" ABOVE FINISH CEILING OVER 3 5/8" METAL STUDS AT 16" O.C. (GRADE TO STRUCTURE ABOVE OR AT MASONRY WALL, WHERE ADJACENT) AT 48" O.C. TYPICAL THROUGHOUT - SEE SPECIFICATIONS.
- ALL ITEMS SUCH AS LIGHT SWITCHES, TEMPERATURE SENSORS, FIRE EXTINGUISHERS, FIRE ALARM PULLS AND OTHER ITEMS TO BE LOCATED AS CLOSE AS POSSIBLE TO THE ADJACENT DOOR FRAME.
- PROVIDE SOLID BLOCKING AT ALL HARDWARE REQUIRED TO STUDS OR FURRED WALLS, AT ALL COUNTERTOPS, SHELVING AND SUPPORTS, MIRRORS, METAL PARTITIONS, GRAB BARS, CHANGING STATIONS, WALL MOUNTED SINKS AND LAVATORIES, AT EDGES OF FRP PANELS, DOOR HARDWARE, FACETS, FIXTURE SHELVING AND WALL SUPPORTED AININGS.
- AT MOP SINK, 3-COMPARTMENT SINKS, ECOLAB TO PROVIDE 120 CLEANING SOLUTION DISPENSER ON HOSE BIB SIDE.
- GENERAL CONTRACTOR SHALL OBTAIN THE APPROVED COOLER BOX DRAWINGS FROM THE COOLER BOX MANUFACTURER PRIOR TO CONSTRUCTION.
- BUILDING SHALL BE PROVIDED WITH A CLASS VI AUTOMATIC FIRE SPRINKLER SYSTEM THROUGHOUT. GENERAL CONTRACTOR SHALL SUBMIT A COMPLETE SET OF SHOP DRAWINGS AS REQUIRED TO GOVERNMENTAL AUTHORITIES TO BE APPROVED PRIOR TO START OF INSTALLATION. GENERAL CONTRACTOR SHALL VERIFY GOVERNMENTAL REQUIREMENTS PRIOR TO BID AND ALL REQUIREMENTS FOR A COMPLETE FIRE SPRINKLER SYSTEM ARE TO BE INCLUDED IN BID (HOSE STREAM ALLOWANCES OF 350 GPM SHALL BE ADDED TO THE SPRINKLER SYSTEM WATER DEMAND WHERE LOCATED IN A RETAIL SHOPPING CENTER). FIRE SPRINKLER PLANS MUST BE APPROVED BY ARCHITECT, OWNER, AND CITY PRIOR TO FABRICATION. SYSTEM SHALL COMPLY WITH NFPA 13. MINIMUM FIRE FLOW RATES SHOULD BE DETERMINED AND SUBMITTED TO GOVERNMENTAL AUTHORITIES FOR A PRELIMINARY REVIEW OF THE AUTOMATIC FIRE SPRINKLER SYSTEM PRIOR TO DESIGN. SPRINKLER HEADS AT DROPPED CEILING AREAS ARE TO BE SEH-RECESSED THROUGHOUT - SEE SPECIFICATIONS. SPRINKLER SYSTEM TO BE AS TIGHT TO ROOF DECK AS POSSIBLE AND NOT UNDER OR THROUGH SCLIGHTS.
- WALL AND CEILING MATERIALS SHALL NOT EXCEED THE FLAME SPREAD CLASSIFICATIONS IN IBC TABLE 803.3.

KEYED NOTES CONT.:

- STRIP CURTAINS HANG TIGHT TO CEILING AND ROLL-UP FOR PROTECTION DURING CONSTRUCTION.
- OPENING IN COOLER WALL FOR WINDOWS BY COOLER BOX MANUFACTURER.
- LOADING DOCK NOT SHOWN IN ITS ENTIRETY - REF. CIVIL DRAWINGS.
- POWERWALL TO BE ON 4" HIGH CONCRETE PAD TO MATCH WIDTH AND LENGTH OF POWERWALL. SEE STRUCTURAL AND ELECTRICAL DRAWINGS.
- NO KILN DRIED VERTICAL ROUGH GRAIN WESTERN RED CEDAR WOOD PANELING TO CEILING OVER 5/8" OSB.
- TELEPHONE MOUNTING BOARD.
- MILLWORK PROVIDED BY G.C. - SEE SHEET A6.0.
- 4" x 8" SLAT WALL BY SPROUTS - TO BE MOUNTED ON TOP OF CHAIR RAIL.
- COORDINATE UNDER GROUND UTILITIES IN THIS LOCATION.
- 225 KVA TRANSFORMER (ABOVE).
- DASHED LINE INDICATES FRP TO 48" ABOVE FINISH FLOOR TO EXTENTS SHOWN. VERIFY LOCATION WITH SPROUTS PRIOR TO INSTALLATION.
- DASHED LINE INDICATES LOCATION OF MOISTURE RESISTANT GYPSUM BOARD 4'-0" MINIMUM PAST SINK AND 6" ABOVE CEILING IN ALL VET AREAS.
- DASHED LINE INDICATES SPOFF ABOVE.
- FRP (TEXTURED) FLOOR TO CEILING.
- ELECTRICAL PANELS, SURFACE MOUNTED AT 8M. CONDITION.
- NEW TRUCK DOCK BUMPERS AND SEALS - DIRECT BUY - RITE HITE.
- DOCK LEVELER - PAINT STEEL ANGLE FRAME AT FLOOR SAFETY YELLOW.
- AIR CURTAIN.
- G.C. TO PROVIDE STAINLESS STEEL CLOSURE AT CASE END CAP AND CASE TOP AS NEEDED. TYPICAL OF ALL WALL CASES.
- PLYWOOD ALONG FACE OF COOLER - PROVIDED BY COOLER BOX MANUFACTURER.
- MILLWORK PROVIDED BY SPROUTS.
- EXTEND WALL STUDS TO ROOF DECK. PROVIDE 5/8" GYPSUM BOARD FULL HEIGHT ON STORAGE / RECEIVING SIDE OF WALL ONLY.
- 1/2" SYNTHETIC LUMBER CHAIR RAIL. SEE DETAIL 16/A6.2 - DO NOT PAINT.

KEYED NOTES:

- DASHED LINE INDICATES 2X6 HORIZONTAL IN-WALL WOOD BACKING AT 6" AND 6'-0" AND 2X4 HORIZONTAL IN-WALL WOOD BACKING AT 9'-0" AT VITAMIN WALL SHELVING.
- EXISTING STRUCTURAL COLUMN - REF TO STRUCTURAL DRAWINGS. FURNISH WRAP AT 8M. CONDITION.
- AT ELECTRIC ADA CARTS, PROVIDE 1/2" SYNTHETIC LUMBER CHAIR RAIL AT 0' ABOVE FINISH FLOOR AND EXTEND CHAIR RAIL 6" BEYOND CARTS.
- TOP OF STUD WALL TO 9'-0" ABOVE FINISH FLOOR OR AT TOP OF ADJACENT COOLER WALL.
- PLUMBING VENT OR REFRIGERATION LINE CHASE. VERIFY LOCATIONS OF PLUMBING VENTS AND REFRIGERATION LINE CHASE WITH PLUMBING AND REFRIGERATION PLANS.
- WALL MOUNTED DECOR FEATURE.
- ALUMINUM AND GLASS STOREFRONT SYSTEM - EXISTING - BY OTHERS.
- 5/8" GYP. BOARD OVER 3 5/8" METAL STUDS AT 16" O.C. - FULL HEIGHT.
- DASHED LINE INDICATES 48" x 48" HIGH DIAMOND PLATE .08" ALUMINUM TREADBRITE TO 52" ABOVE FINISH FLOOR TO PROTECT COOLER BOX WALL FROM MEAT GRINDER. PROVIDED AND INSTALLED BY COOLER BOX MANUFACTURER.
- UNDER FLOOR WALKER DUCT ELECTRICAL CHASE. SEE ELECTRICAL DRAWINGS. SEE SHEET A1.0 FOR FINISH.
- D.B.A. PANEL.
- STAINLESS STEEL CORNER GUARD TO 48" ABOVE FINISH FLOOR, AT END WALLS PROVIDE FULL WIDTH CAP GUARDS IN LIEU OF CORNER GUARDS AT 8M. CONDITION. EXTEND GUARD FROM TOP OF BASE TO CEILING.
- LOCATION OF 5/8" CLEAR SEALED ACX PLYWOOD WAINSCOT (48" HIGH) (A SIDE EXPOSED) OVER GYPSUM BOARD STUD WALL. PLYWOOD INSTALLED EXCEPT WHERE SHELVING OCCURS. COORDINATE WITH FLO.
- GALVANIZED STEEL CORNER GUARD 48" HIGH, AT 8M. CONDITION PROVIDE CAP GUARDS AT JAMB AND HEADER IN LIEU OF CORNER GUARDS AT ENDS OF WALLS.
- STAINLESS STEEL FROM TOP OF BASE TO UNDERSIDE OF HOOD. EXTEND 18" BEYOND FACE OF HOOD AND OPEN AT SIDES - SEAL HOOD TIGHT TO WALL.
- AUTOMATIC ENTRY DOOR WITH SENSORS TO MATCH SPROUTS REQUIREMENTS AND MANUFACTURER. SEE DOOR SCHEDULE.
- PROVIDE 48" HIGH FRP AT ELECTRIC DRINKING FOUNTAIN AND RECESSED SIDE WALLS - EXTEND TO DOOR FRAMES IF NOT RECESSED.

320104110

COPYRIGHT NOTICE:  
These drawings and specifications are copyrighted and subject to copyright protection as an "architectural work" under sec. 102 of the copyright act, 17 U.S.C. As amended January 2003. The protection includes, without limitation, the overall form, arrangement and composition of space, and elements of the design. Under such protection, unauthorized use of these drawings and specifications may result in cessation of construction, building actions, and/or monetary liability.

AAD:FITCH, Inc.  
**FITCH**  
16455 Hawthorne Avenue, Suite 100  
Van Nuys, CA 91411  
Tel: 818.886.6200  
Fax: 818.886.6201

**SPROUTS**  
FARMERS MARKET  
SPROUTS OF WEST HOLLYWOOD  
WEST HOLLYWOOD, CA

PERSON:  
CONSULTING ENGINEER:  
LIC. NO. 11157  
BLAIR S. LEACH  
C25788  
12/8/15  
STATE OF CALIFORNIA

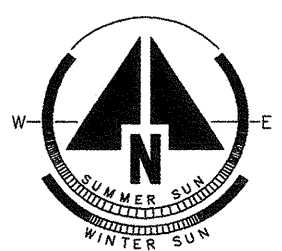
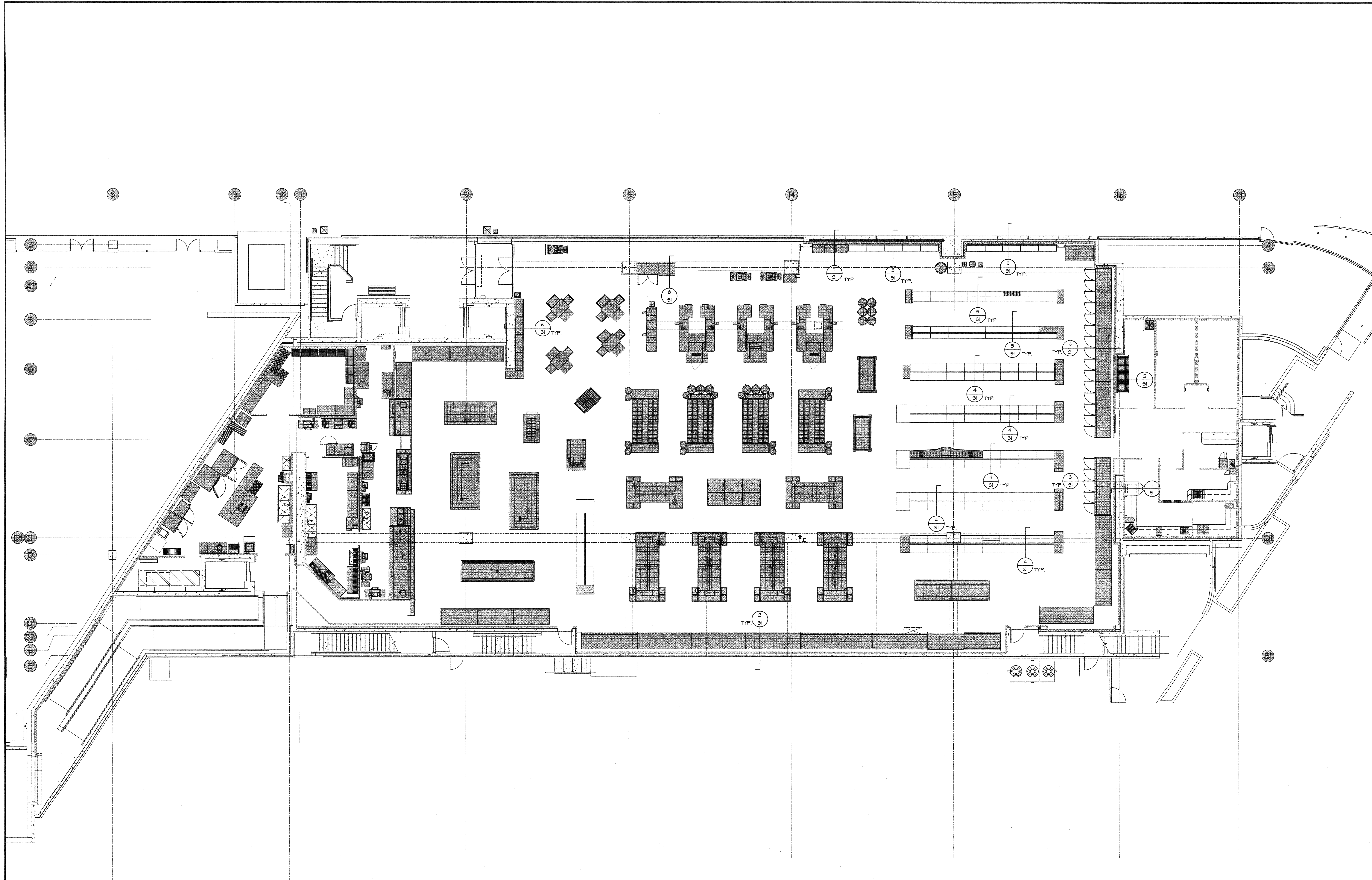
SPROUTS FARMERS MARKET  
8550 SANTA MONICA BLVD.  
WEST HOLLYWOOD, CA 90069  
**1ST FLOOR PLAN**

DATE: 12-09-15  
SCALE: AS NOTED  
DRAWN BY: AAD  
PROJECT NUMBER: 320104110  
SHEET: A1.0  
REV:









FIXTURE PLAN - 1ST LEVEL

SCALE: 1/8" = 1'-0"



320104110

COPYRIGHT NOTICE:  
These drawings and specifications are  
copyrighted and subject to copyright  
protection as an architectural work  
under sec. 102 of the copyright act.  
The protection includes, without  
limitation, the overall form,  
arrangement and composition of  
spaces, and elements of the design.  
Under such protection, unauthorized  
use of these drawings and  
specifications may result in cessation  
of construction, building seizure, and /  
or monetary liability.

**AAD-FITCH, Inc.**  
**FFITCH**  
14250 Main Street, Suite 200  
San Francisco, CA 94125  
Tel: 415.866.0050  
www.aad-fitch.com

**SPROUTS**  
**FARMERS MARKET**  
**SPROUTS of WEST HOLLYWOOD, CA**

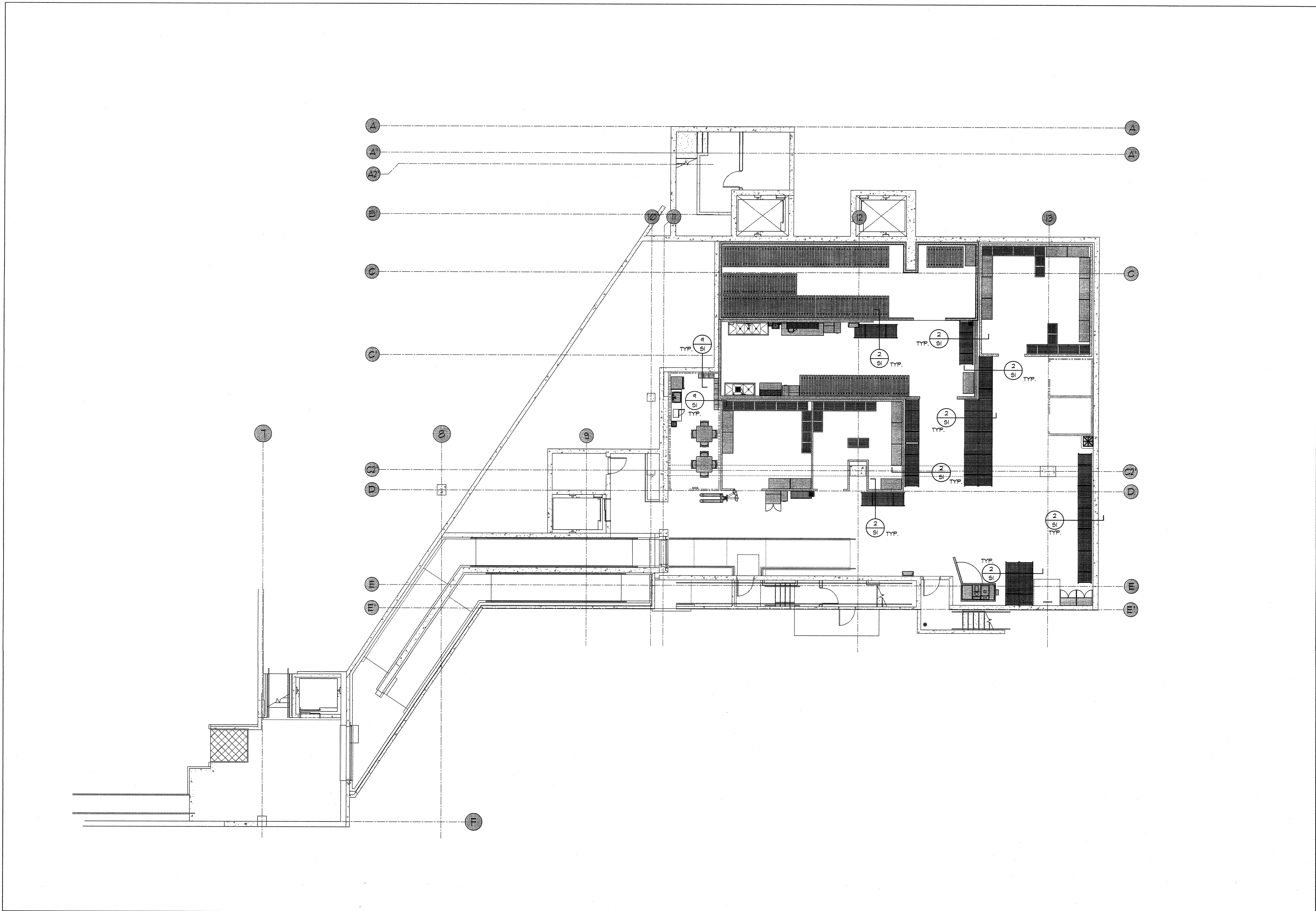
REVISION	REVISION	REVISION	REVISION	REVISION
1	2	3	4	5
1	2	3	4	5
1	2	3	4	5
1	2	3	4	5

PRELIMINARY  
NOT FOR  
CONSTRUCTION

**SPROUTS FARMERS MARKET**  
**8550 SANTA MONICA BLVD.**  
**WEST HOLLYWOOD, CA 90069**

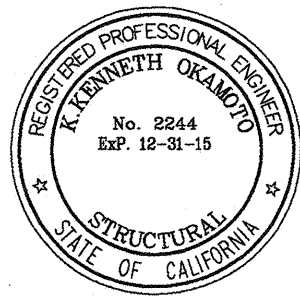
DATE: 12-04-15  
SCALE:  
DRAWN BY: AAD  
PROJECT NUMBER: 320104110  
SHEET: **S2**  
REV:





**FIXTURE PLAN - BASEMENT LEVEL**

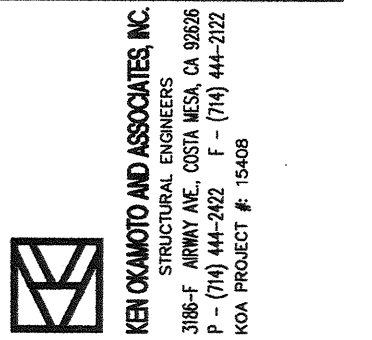
SCALE: 1/8" = 1'-0"



**SPROUTS FARMERS MARKET**  
**8550 SANTA MONICA BLVD.**  
**WEST HOLLYWOOD, CA 90069**

DATE: 12-04-15  
SCALE:  
DRAWN BY: AAD  
PROJECT NUMBER: 320104110  
SHEET: **S3**  
REV:

**PRELIMINARY**  
**NOT FOR**  
**CONSTRUCTION**



REVISION	REVISION
REVISION	REVISION
REVISION	REVISION
REVISION	REVISION
REVISION	REVISION
REVISION	REVISION

**SPROUTS**  
**FARMERS MARKET**  
**SPROUTS of WEST HOLLYWOOD**  
**WEST HOLLYWOOD, CA**

**AAD-FITCH, Inc.**  
**FITCH**

**320104110**

COPYRIGHT NOTICE:  
These drawings and specifications are  
copyrighted and subject to copyright  
protection as an "architectural work"  
under sec. 102 of the copyright act,  
17 U.S.C. As amended January 2003.  
The protection includes, without  
limitation, the overall form,  
arrangement and composition of  
space, and elements of the design.  
Under such protection, unauthorized  
use of these drawings and  
specifications may result in cessation  
of construction, building seizure, and/or  
monetary liability.