

# TRADELANE AIRPORT CENTER – HOUSTON

19051 KENSWICK DRIVE, SUITE 190, HUMBLE, TX 77338

Building 3

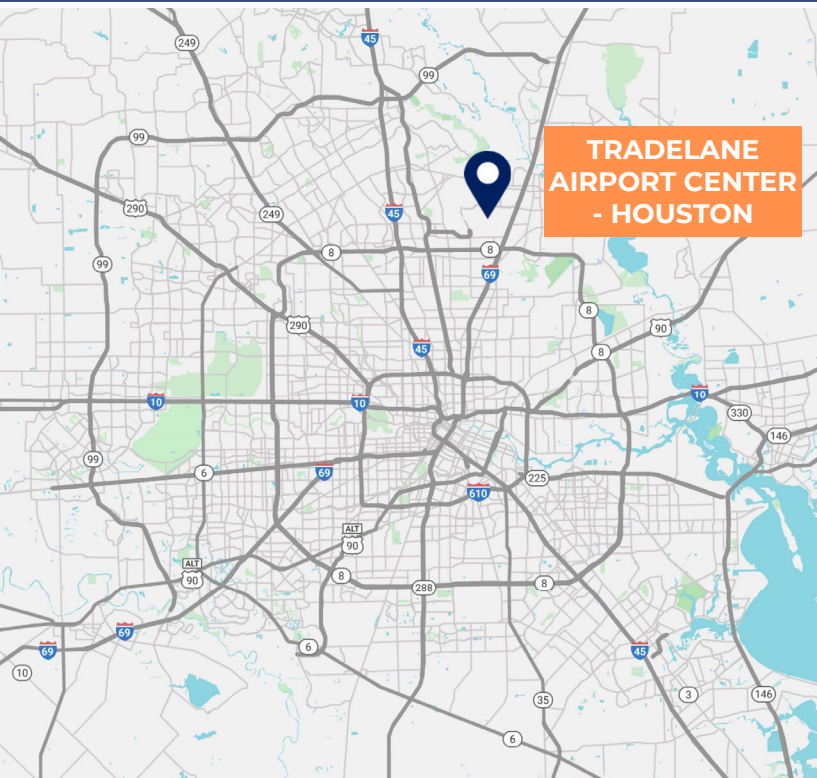


## FOR LEASE

### LOCATION HIGHLIGHTS:

- Adjacent to George Bush International Airport (IAH)
- Access to Major Thoroughfares, including I-69, I-45, Beltway 8, and FM 1960.
- Desirable Location for Air Cargo Users

# 11,310 SF



### SPACE FEATURES



#### 11,310 SF AVAILABLE

- 2,479 SF Office
- 8,831 SF Warehouse

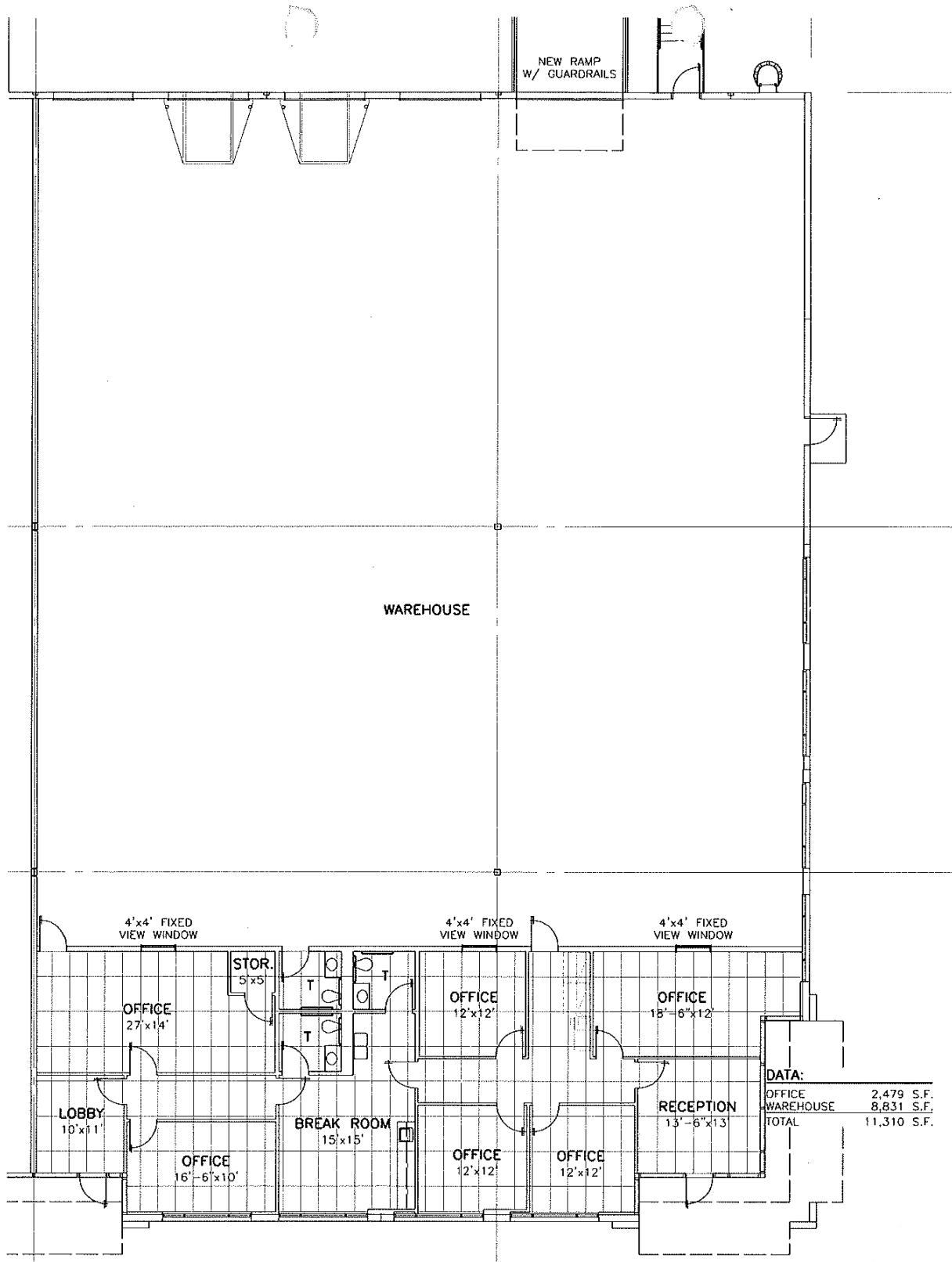


#### UNIT FEATURES

- (4) 9'x10' Dock High Doors
- (1) 12'x14' Drive-In Door
- 52' x 40' Column Spacing
- 24' Clear Height
- ESFR Sprinkler System
- Rear Load Configuration
- Ample Parking
- End Cap Space



**11,310 SF – Floor Plan**





**CONTACT US**

**JOHN KRUSE**  
**MANAGING DIRECTOR**

+1 713 304 4919

[john.kruse@cushwake.com](mailto:john.kruse@cushwake.com)

**CARTER HOLMES**  
**SENIOR ASSOCIATE**

+1 713 417 5447

[carter.holmes@cushwake.com](mailto:carter.holmes@cushwake.com)

**KELLY LANDWERMEYER**  
**MANAGING DIRECTOR**

+1 713 249 4295

[kelly.landwermeyer@cushwake.com](mailto:kelly.landwermeyer@cushwake.com)