

**AVISON  
YOUNG**

# 31 Milk Street

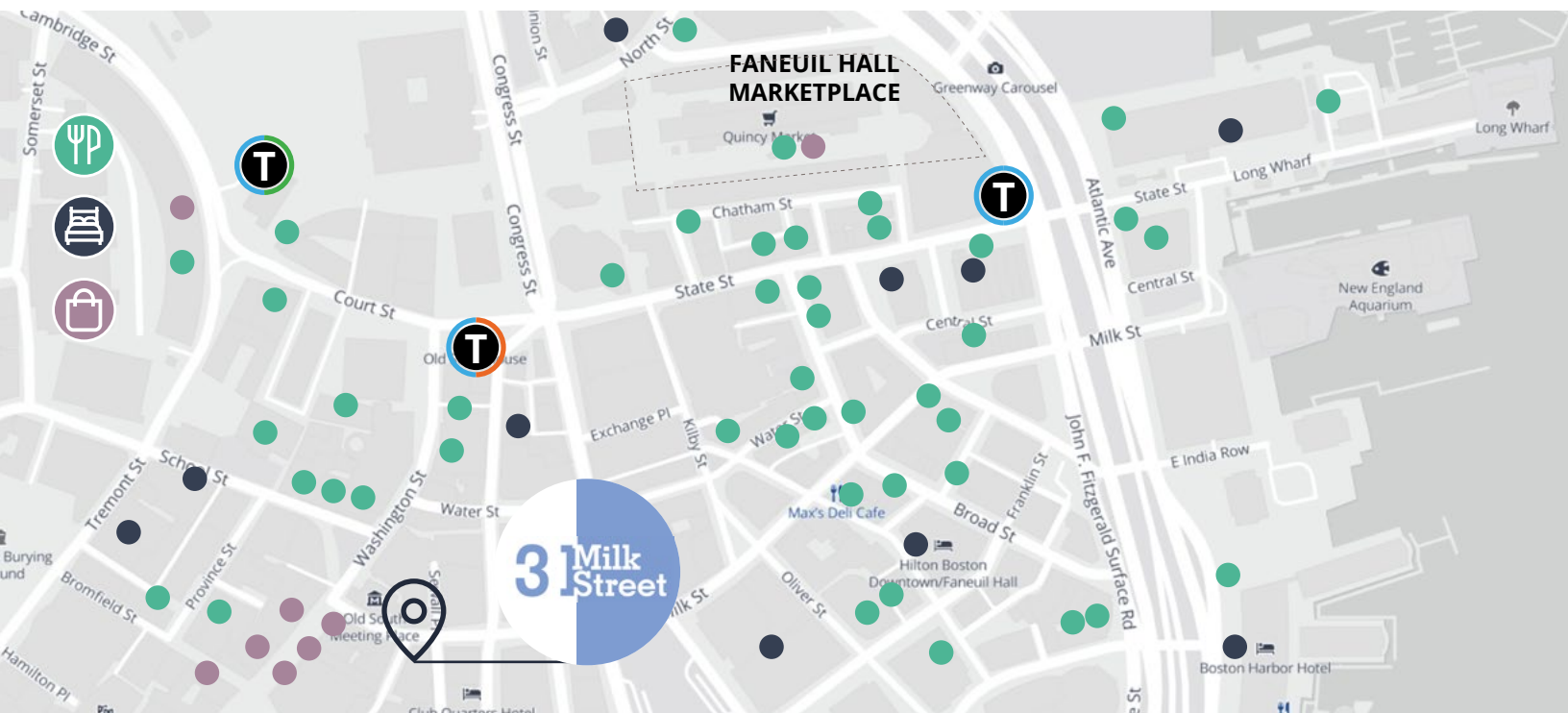
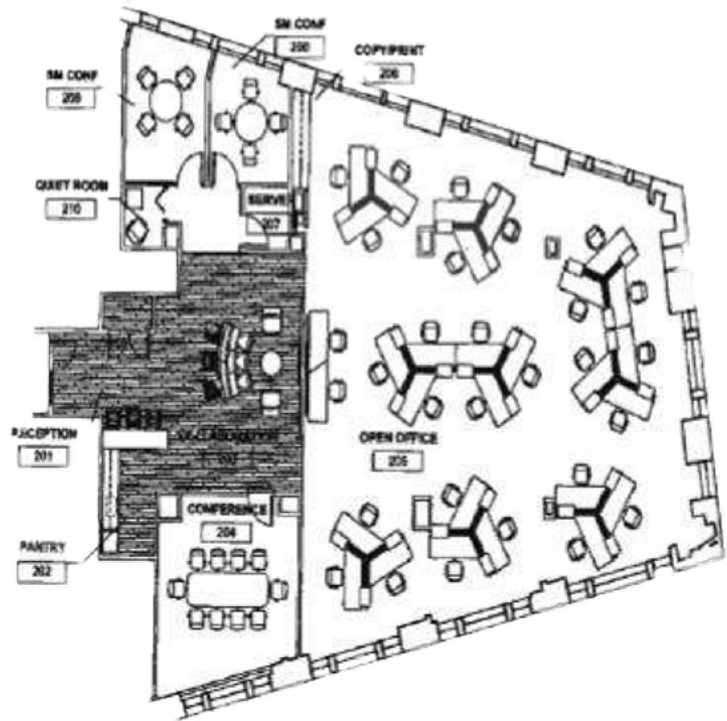
2nd floor | 4,547 SF

Sublease available  
now through 1/31/2026



# Floor plan & details

2nd floor  
4,547 SF



Mix of open work station  
and private meeting rooms



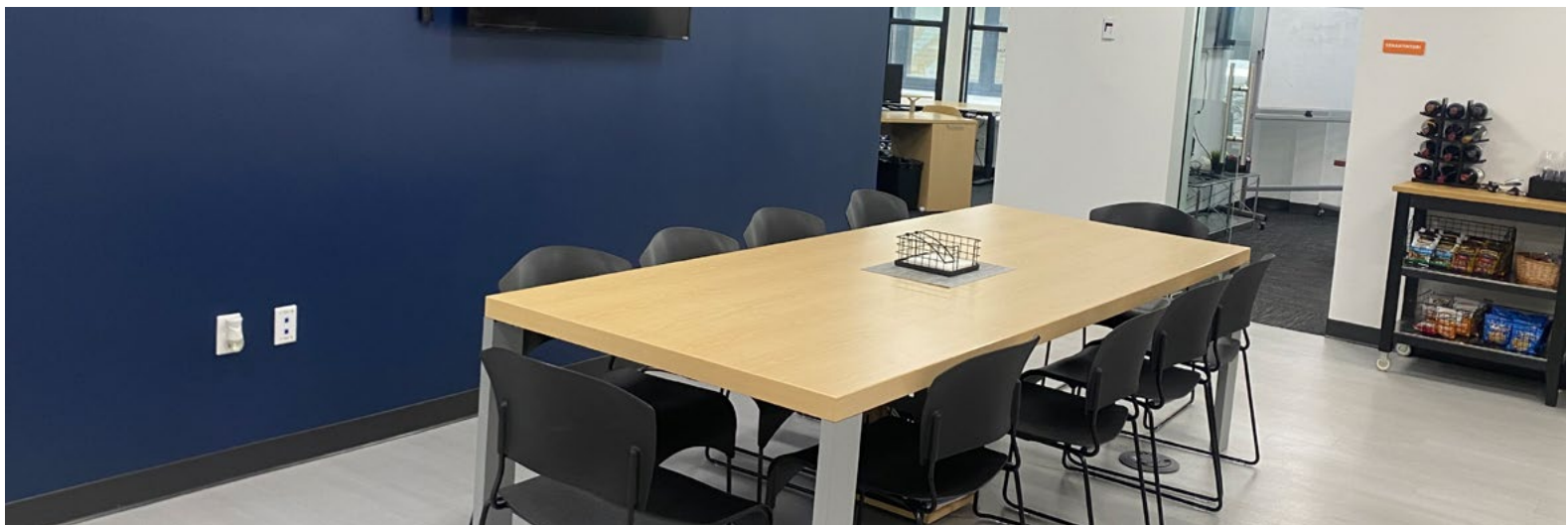
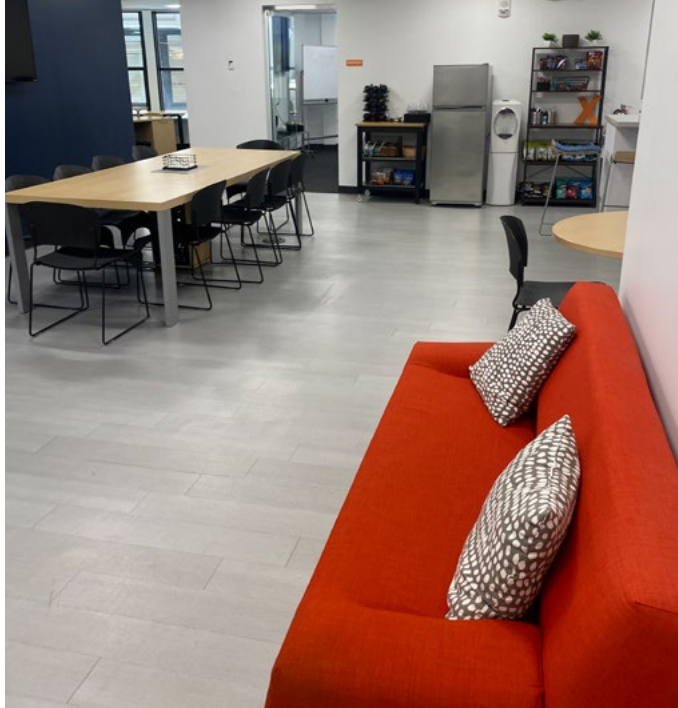
Great views and  
natural light



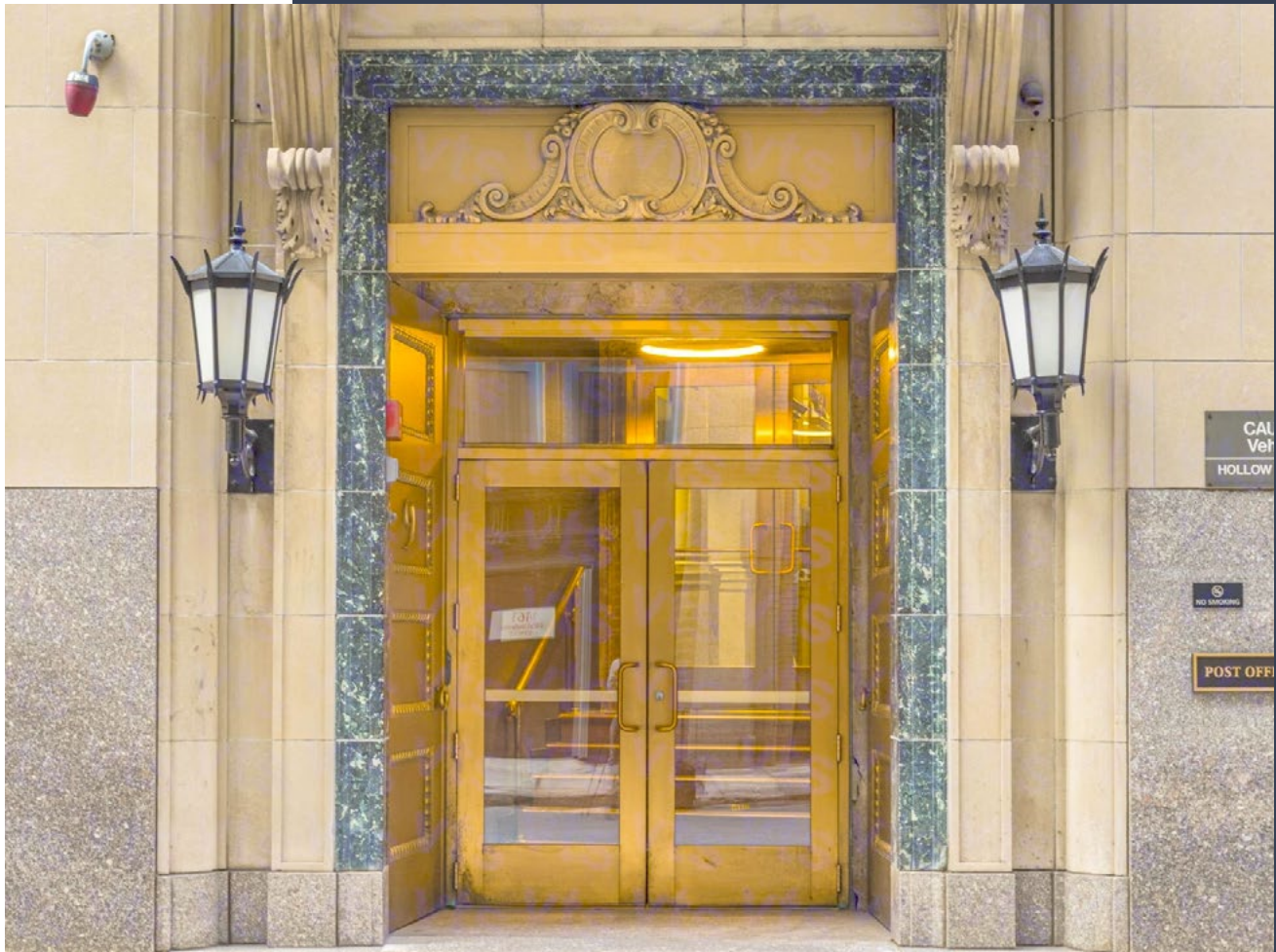
Furniture included

31 Milk Street, an eleven-story office complex spanning 95,599 square feet, was constructed in 1922 and retains numerous original historical architectural features.

Situated in Boston's sought-after Downtown Market, it enjoys a prime location merely two blocks from Post Office Square and adjacent to the lively Downtown Crossing area.



# 31 Milk Street



**For more information, please contact:**

**Justin Dziama**

Principal

617.366.1004

[justin.dziama@avisonyoung.com](mailto:justin.dziama@avisonyoung.com)

© 2024, Avison Young - New England, LLC. The information contained herein was obtained from sources which we deem reliable and, while thought to be correct, is not guaranteed by Avison Young and as such, cannot be warranted nor form any part of any future contract.

**AVISON  
YOUNG**