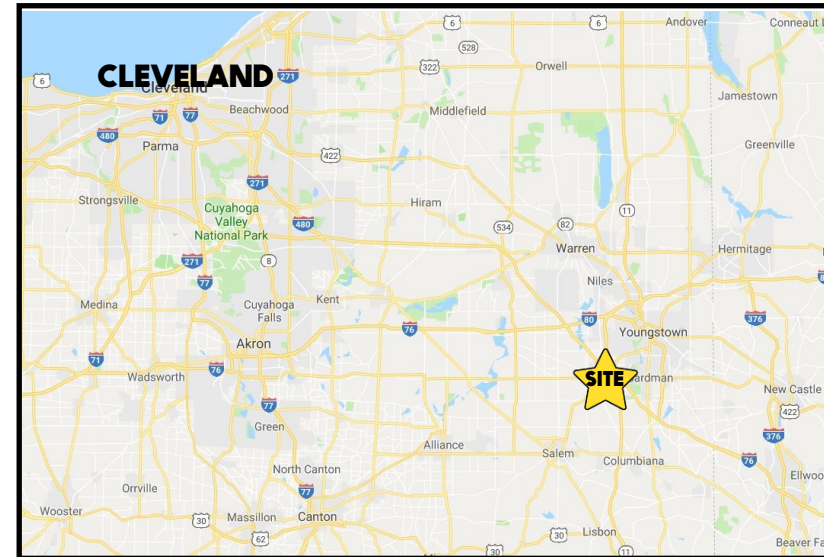


LOCATION

3667 Starr Centre Dr, Canfield, OH 44406



TRAFFIC

Boardman Canfield Rd = 30,008 VPD

3D TOUR

[3667](#)

HIGHLIGHTS

- Former bank with 4 drive-thru lanes
- Visibility from US 224 (Boardman Canfield Rd)
- Just west of Tippecanoe Rd / US 224 intersection in Boardman / Canfield's professional business district
- Located in Canfield Township (No city income tax)

CONTACT

ADAM DIVELBISS

501.551.3817

adivelbiss@platzrealtygroup.com

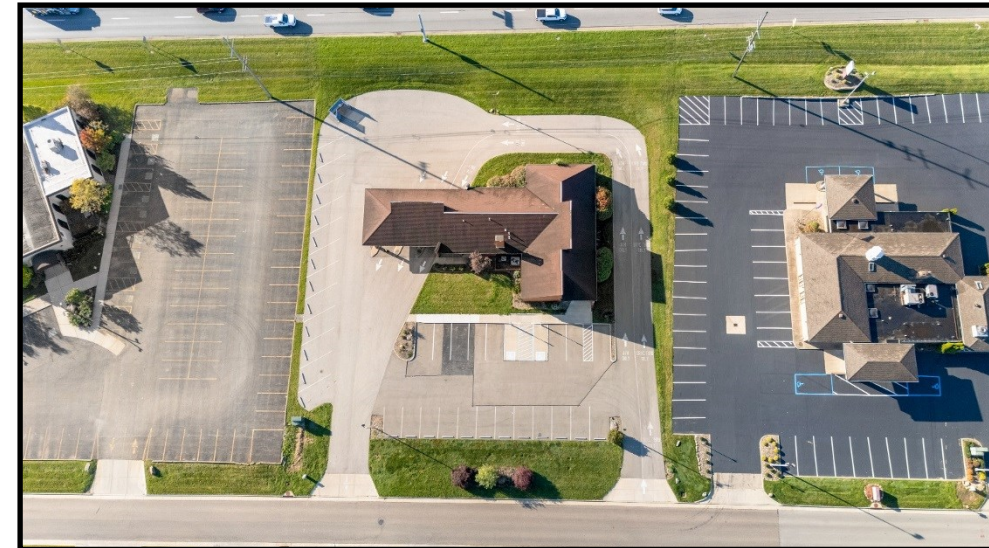
BILL KUTLICK

330.565.5701

bkutlick@platzrealtygroup.com

Office: 330.757.4889 | Fax: 330.294.5622 | 3830 Starr Centre Dr, Suite 2, Canfield, OH 44406

www.PLATZREALTYGROUP.com



Office: 330.757.4889 | Fax: 330.294.5622 | 3830 Starr Centre Dr, Suite 2, Canfield, OH 44406

www.PLATZREALTYGROUP.com

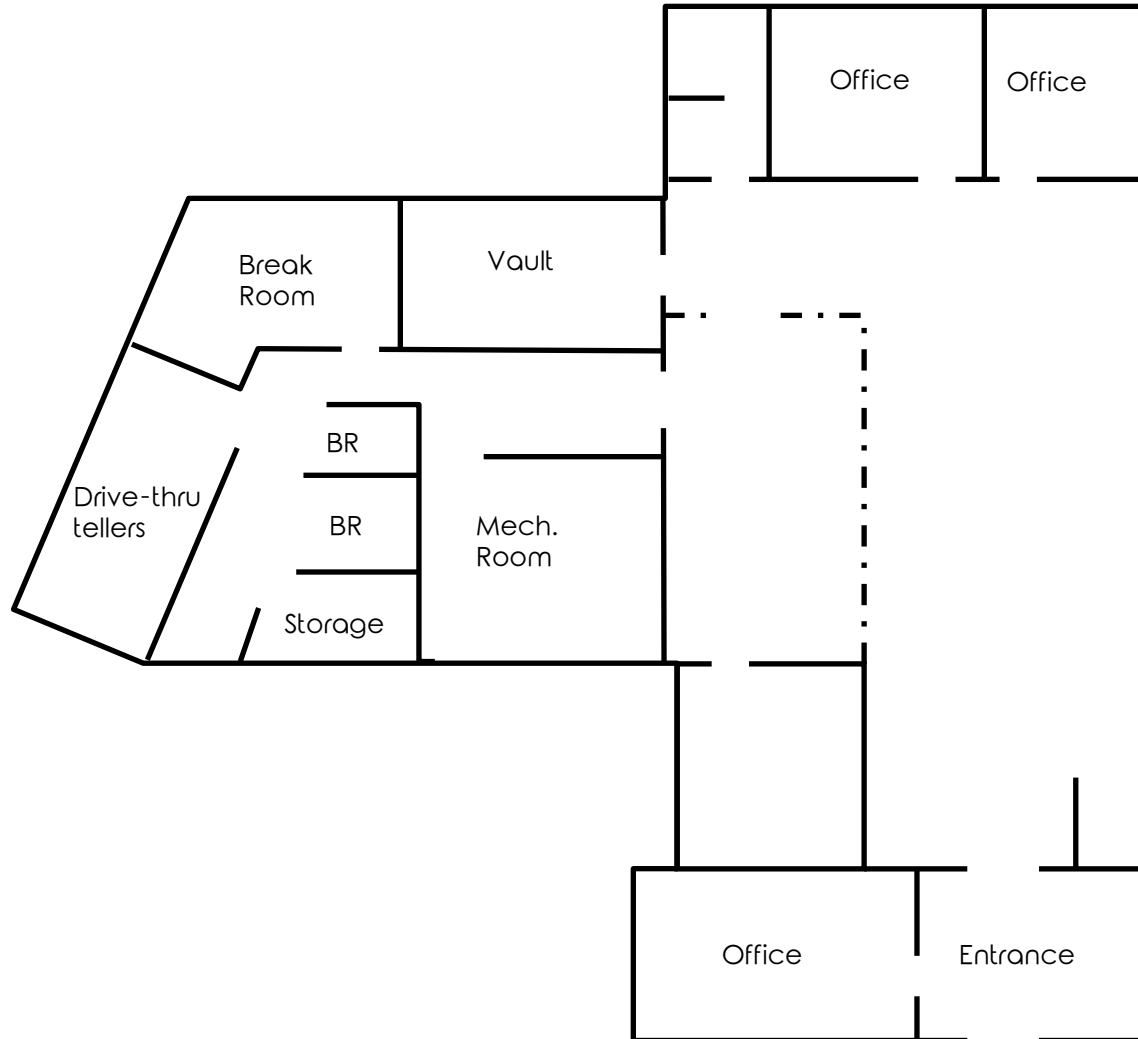
The information presented was obtained from sources believed to be true and reliable. The Platz Realty Group makes no warranties or guarantees to the accuracy of the information.



Office: 330.757.4889 | Fax: 330.294.5622 | 3830 Starr Centre Dr, Suite 2, Canfield, OH 44406

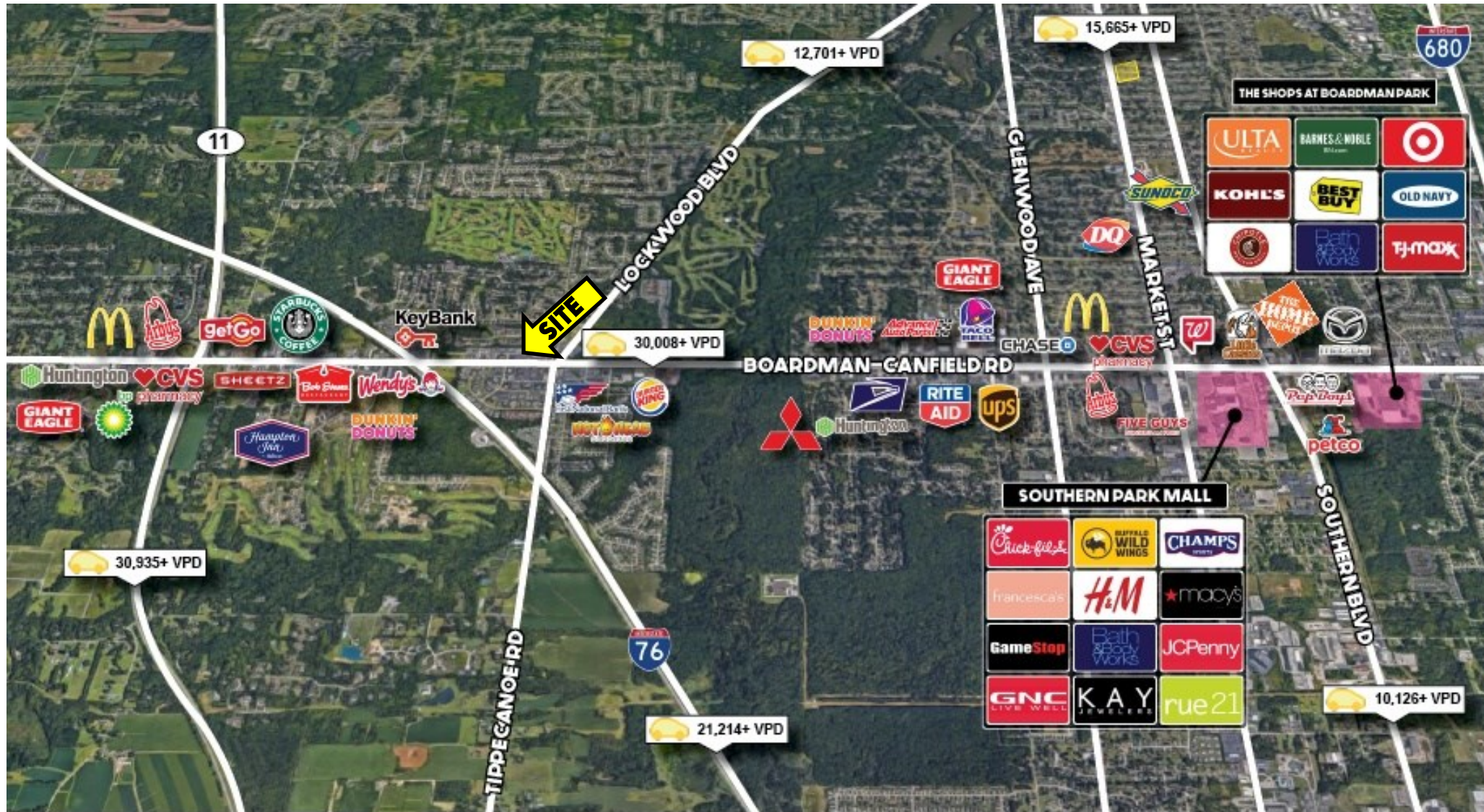
www.PLATZREALTYGROUP.com

The information presented was obtained from sources believed to be true and reliable. The Platz Realty Group makes no warranties or guarantees to the accuracy of the information.



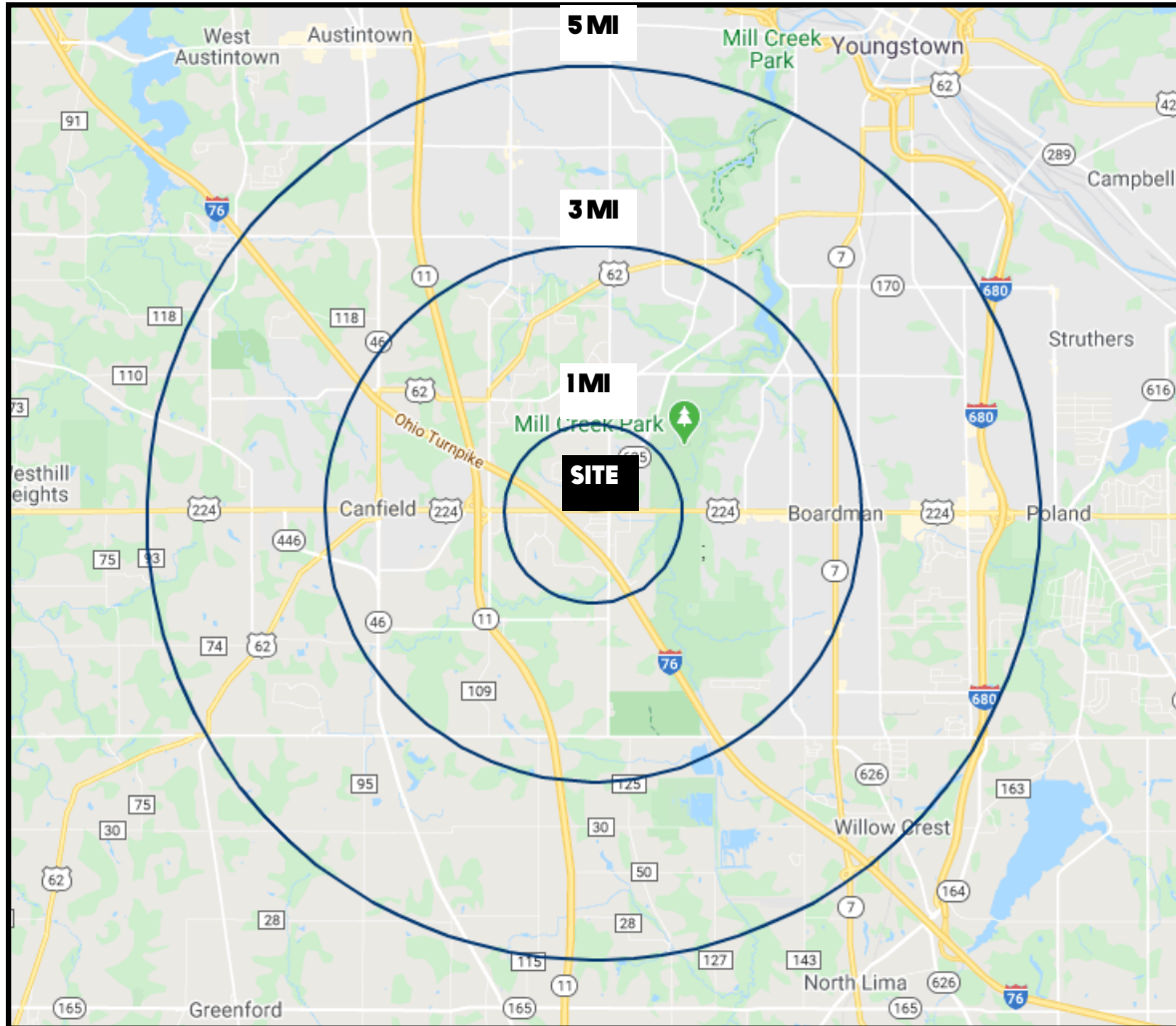
Office: 330.757.4889 | Fax: 330.294.5622 | 3830 Starr Centre Dr, Suite 2, Canfield, OH 44406

www.PLATZREALTYGROUP.com



Office: 330.757.4889 | Fax: 330.294.5622 | 3830 Starr Centre Dr, Suite 2, Canfield, OH 44406

www.PLATZREALTYGROUP.com



DEMOGRAPHICS	1 MI	3 MI	5 MI
POPULATION	5,431	35,280	97,246
HOUSEHOLDS	2,338	15,339	41,599
AVERAGE AGE	42	43	43
MEDIAN HH INCOME	\$78,058	\$68,914	\$54,190

SITE INFORMATION	
LOCATION	Canfield Township Mahoning County
PARCEL	26-065-0-004
SIZE	4,340 SF
ACREAGE	1 acre
REAL ESTATE TAXES	\$12,598/year
LEASE RATE	\$100,000/year
PRICE	Call for Pricing

Office: 330.757.4889 | Fax: 330.294.5622 | 3830 Starr Centre Dr, Suite 2, Canfield, OH 44406

www.PLATZREALTYGROUP.com